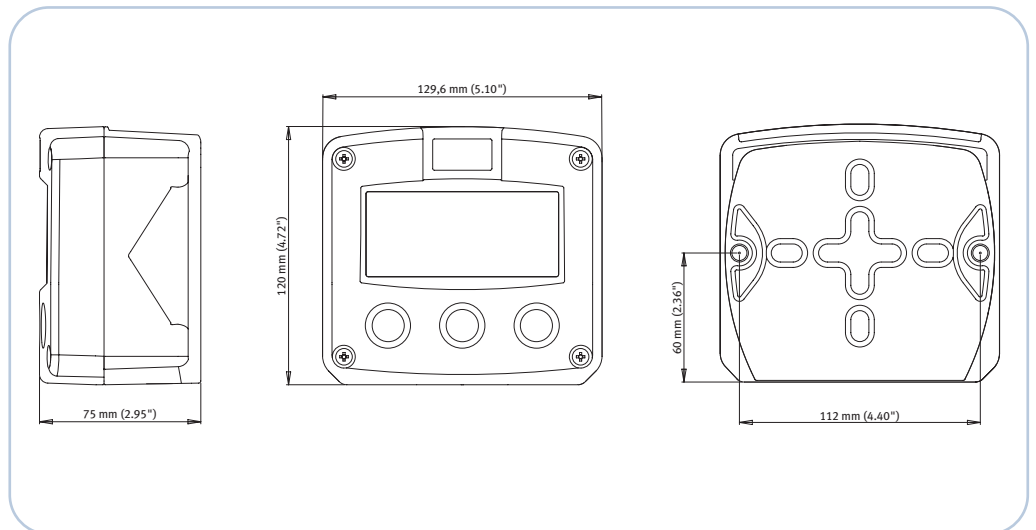
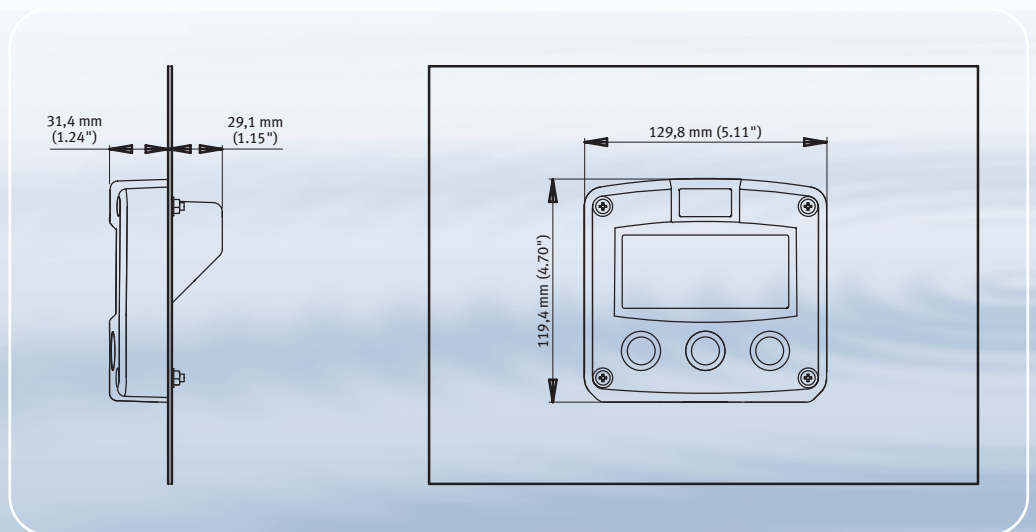


ENCLOSURES

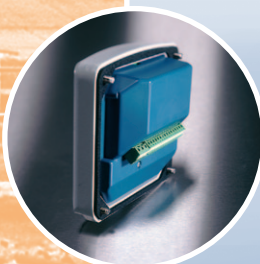
The following pages contain dimensional drawings of the F-Series enclosures and mounting accessories.



Field / wall mount enclosures, IP67 / NEMA4X

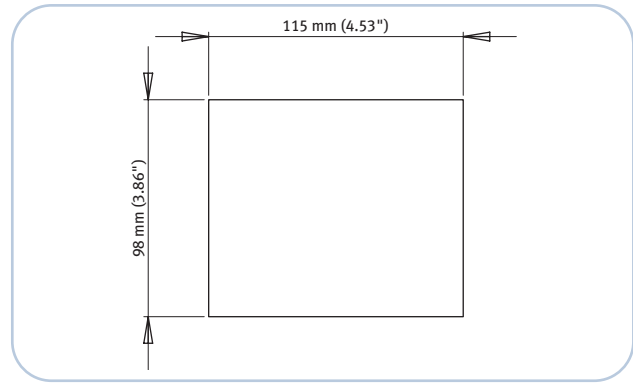


Panel mount enclosures, IP65 / NEMA4



Panel mounting

A major advantage of using the F-Series as a panel mount unit is the minimum depth clearance required. This allows a small box being used compared to many other panel mount devices.



Panel mount cut-out dimensions

Panel cut-out

The panel cut-out can be rectangle where the four bolts will be located in the corners.



Mounting the enclosure in a panel

The enclosure is supplied with four stainless steel bolts, O-rings, washers and nuts.



F-Series mounted in the cabinet

After installing the unit, the thick silicon gasket does assure a proper sealing.

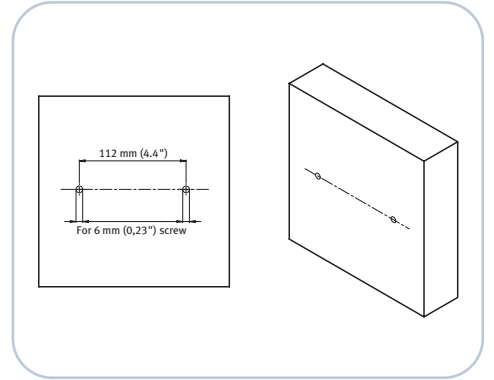


Wall mounting

The F-Series enclosures can be mounted onto the wall in two ways: with and without a mounting plate. Proper screws or bolts have to be used as the weight of the aluminum enclosure is about 1kg and the GRP enclosure about 0.5 kg.

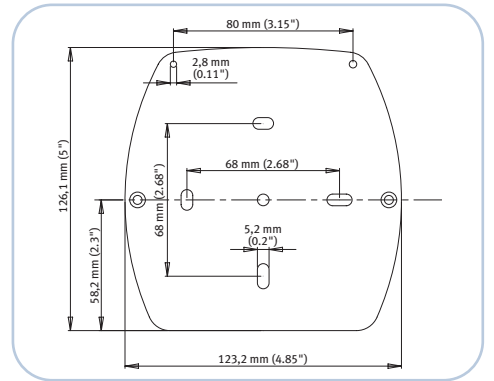
Mounting **without** a mounting plate;

Two holes have to be drilled horizontally to place 6mm (0.23") screws or bolts.



Mounting **with** a mounting plate

The stainless steel mounting plate does make the installation easier. It includes two proper fixed M6 stainless steel bolts with nuts and a large position to fix a tagplate with 3mm (0.11") screws.



Placing the mounting plate

Two or four holes have to be drilled horizontally and/or vertically, suitable for 5mm (0.2") screws or bolts.



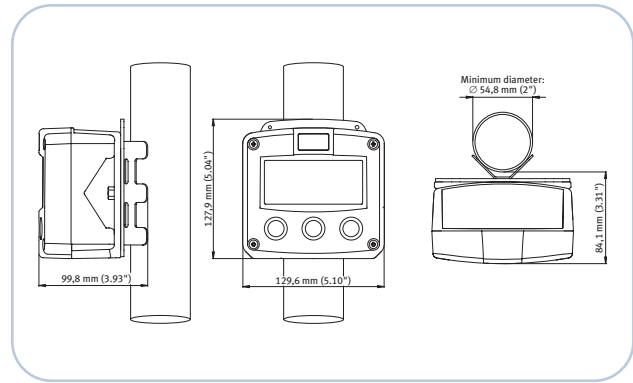
Placing the wall mount enclosure

Simply place the unit and fix it with the two stainless steel washers and M6 nuts provided.



Pipe mounting

The F-Series enclosures can be mounted on any horizontal or vertical pipe from 54,8mm (2") diameter with the stainless steel pipe mounting kit. Proper clamps have to be used as the total weight including the aluminum enclosure is about 1,4 kg and including the GRP enclosure about 0,9 kg. On the top of the mounting plate, a space is provided to place a proper tagplate with 3mm (0.11") screws.



Assembling the pipe mounting kit

The mounting kit includes three stainless steel M5 bolts to fix the pipe mounting bracket horizontally or vertically on the mounting plate. When assembled, the part can easily be fixed on the pipe with the stainless steel worm gear clamps.



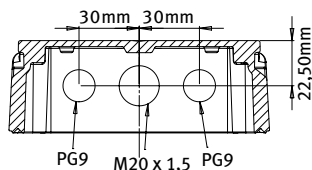
Placing the field mount enclosure

Simply place the unit and fix it with the two stainless steel washers and M6 nuts provided.

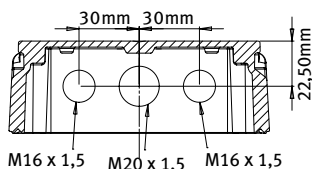


Back case and cable entry dimensions

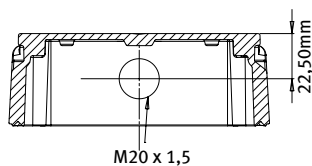
Aluminum



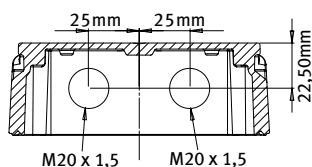
HA



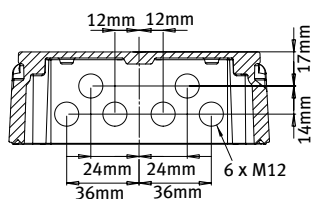
HM



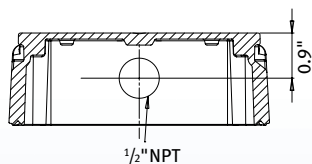
HN



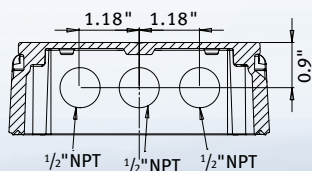
HO



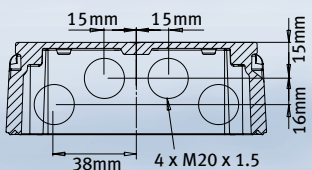
HP



HT



HU



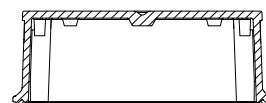
HV



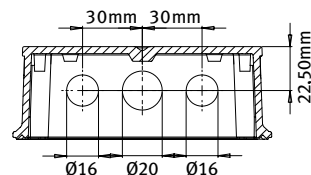
HZ

GRP

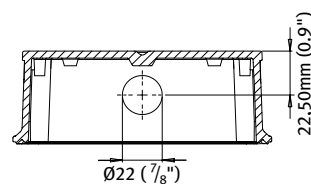
HD



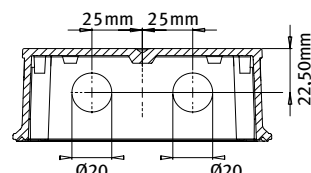
HE



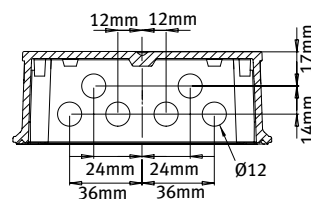
HF



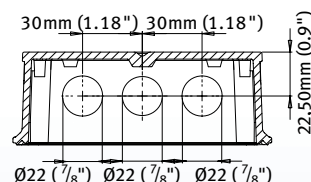
HG



HH



HJ




HK





















Flat bottom, no holes available.



The  symbol indicates if the enclosure is available Intrinsically Safe.

Enclosures

Various types of enclosures are available for hazardous and safe area applications. The enclosures have recently been redesigned with a new keyboard and sealing to make them suitable for even the most harsh environments and to improve the operation. All enclosures have stainless steel screws. The aluminum enclosures are painted with a high quality UV stabilized two component industrial paint. The GRP enclosures (Glass-fiber Reinforced Polyamide) are UV stabilized and offer Vo acc. to UL94. New stainless steel accessories are available for wall and pipe mounting of the field enclosures (see section Accessories).

HA		Field / wall mount enclosure	IP67 / NEMA 4X	Aluminum	Cable entry: 2 x PG9 and 1 x M20.
HB		Panel mount enclosure	IP65 / NEMA 4	Aluminum	
HC		Panel mount enclosure	IP65 / NEMA 4	GRP	
HD		Field / wall mount enclosure	IP67 / NEMA 4X	GRP	Cable entry: no holes.
HE		Field / wall mount enclosure	IP67 / NEMA 4X	GRP	Cable entry: 2 x 16mm and 1 x 20mm.
HF		Field / wall mount enclosure	IP67 / NEMA 4X	GRP	Cable entry: 1 x 22mm (0.866").
HG		Field / wall mount enclosure	IP67 / NEMA 4X	GRP	Cable entry: 2 x 20mm.
HH		Field / wall mount enclosure	IP67 / NEMA 4X	GRP	Cable entry: 6 x 12mm.
HJ		Field / wall mount enclosure	IP67 / NEMA 4X	GRP	Cable entry: 3 x 22mm (0.866").
HK		Field / wall mount enclosure	IP67 / NEMA 4X	GRP	Cable entry: no holes, flat bottom.
HM		Field / wall mount enclosure	IP67 / NEMA 4X	Aluminum	Cable entry: 2 x M16 and 1 x M20.
HN		Field / wall mount enclosure	IP67 / NEMA 4X	Aluminum	Cable entry: 1 x M20.
HO		Field / wall mount enclosure	IP67 / NEMA 4X	Aluminum	Cable entry: 2 x M20.
HP		Field / wall mount enclosure	IP67 / NEMA 4X	Aluminum	Cable entry: 6 x M12.
HT		Field / wall mount enclosure	IP67 / NEMA 4X	Aluminum	Cable entry: 1 x 1/2" NPT.
HU		Field / wall mount enclosure	IP67 / NEMA 4X	Aluminum	Cable entry: 3 x 1/2" NPT.
HV		Field / wall mount enclosure	IP67 / NEMA 4X	Aluminum	Cable entry: 4 x M20.
HZ		Field / wall mount enclosure	IP67 / NEMA 4X	Aluminum	Cable entry: no holes.



Fluidwell bv
P.O. Box 6
5460 AA VEGHEL
The Netherlands

Phone +31 (0)413 343 786

Fax +31 (0)413 363 443

sales@fluidwell.com

www.fluidwell.com

Distributor:



Important: specifications are subject to change without notice. Copyright Fluidwell bv - 2012 - ENCLOSURES-CATALOG-EN-V1235