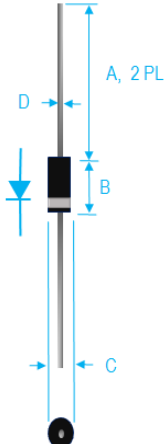


## 1A FAST RECOVERY GLASS PASSIVATED RECTIFIER

 <table border="1" style="margin-left: auto; margin-right: auto;"> <thead> <tr> <th rowspan="2">Dim.</th> <th colspan="2">Value Inch[mm]</th> </tr> <tr> <th>Min.</th> <th>Max.</th> </tr> </thead> <tbody> <tr> <td>A</td> <td>1.000[25.40]</td> <td>---</td> </tr> <tr> <td>B</td> <td>0.166[4.22]</td> <td>0.205[5.21]</td> </tr> <tr> <td>C</td> <td>0.080[2.03]</td> <td>0.107[2.72]</td> </tr> <tr> <td>D</td> <td>0.028[0.71]</td> <td>0.034[0.86]</td> </tr> </tbody> </table>	Dim.	Value Inch[mm]		Min.	Max.	A	1.000[25.40]	---	B	0.166[4.22]	0.205[5.21]	C	0.080[2.03]	0.107[2.72]	D	0.028[0.71]	0.034[0.86]	<h3>PRODUCT FEATURES</h3> <ol style="list-style-type: none"> <li>1. FLAMMABILITY CLASSIFICATION: 94V-0</li> <li>2. GLASS PASSIVATED CHIP JUNCTION</li> <li>3. 1A OPERATION @ 55°C WITH NO THERMAL RUNAWAY</li> <li>4. FAST SWITCHING FOR HIGH EFFICIENCY</li> <li>5. EXCEED MIL-STD-19500</li> <li>6. CASE: JEDEC DO-41, MOLDED CASE</li> <li>7. DIMENSIONS IN INCHES AND (MILLIMETERS)</li> <li>8. POLARITY: INDICATED BY CATHODE BAND</li> <li>9. WEIGHT : 0.34 GRAMS</li> <li>10. TERMINALS SOLDERABILITY: PER MIL-STD-202, METHOD 208</li> <li>11. PULLING TEST: 2.3 KG</li> <li>12. RoHS</li> </ol>
Dim.		Value Inch[mm]																
	Min.	Max.																
A	1.000[25.40]	---																
B	0.166[4.22]	0.205[5.21]																
C	0.080[2.03]	0.107[2.72]																
D	0.028[0.71]	0.034[0.86]																

MAXIMUM RATINGS AND ELECTRICAL CHARACTERISTICS RATINGS AT 25°C AMBIENT TEMPERATURE UNLESS OTHERWISE SPECIFIED. STORAGE AND OPERATING TEMPERATURE RANGE -55°C TO +150°C. SINGLE PHASE, HALF WAVE, 60 HZ, RESISTIVE OR INDUCTIVE LOAD. FOR CAPACITIVE LOAD, DERATE CURRENT BY 20%

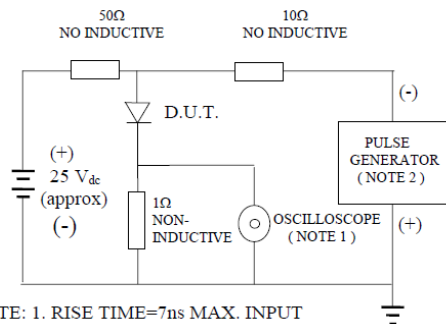
RATINGS	SYMBOL	VALUE	UNITS
MAXIMUM AVERAGE FORWARD RECTIFIED CURRENT, 0.375"(9.5mm) LEAD LENGTH @ 55°C	$I_o$	1	A
PEAK FWD SURGE CURRENT, 8.3ms HALF SINE-WAVE SUPERIMPOSED ON RATED LOAD	$I_{FSM}$	30	A
TYPICAL JUNCTION CAPACITANCE(NOTE 1)	$C_J$	15	pF
TYPICAL THERMAL RESISTANCE (NOTE 2)	$R_{\theta ja}$	50	°C/W
MAXIMUM FORWARD VOLTAGE	$V_F$	1.2	V
MAXIMUM REVERSE CURRENT @ 25°C	$I_R$	5	uA
MAXIMUM REVERSE CURRENT @ 100°C	$I_R$	50	uA
MAXIMUM REVERSE RECOVERY TIME	$T_{RR}$	120	nS

1. MEASURED @ 1 MHZ AND APPLIED REVERSE VOLTAGE OF 4.0 VOLTS
2. BOTH LEADS ATTACHED TO HEAT SINK 20x20x1 (mm) COPPER PLATE @ LEAD LENGTH 5mm
3. MAXIMUM FORWARD VOLTAGE AT  $I_o$  DC
4. REVERSE RECOVERY TEST CONDITIONS:  $I_F=0.5A$ ,  $I_R=1.0A$ ,  $IRR=0.25A$

PART NUMBER	MAX RECURRENT PK REV VOLTAGE $V_{RRM}$ (V)	MAX RMS VOLTAGE $V_{RMS}$ (V)	MAX DC BLOCKING VOLTAGE $V_{DC}$ (V)
1N4933G	50	35	50
1N4934G	100	70	100
1N4935G	200	140	200
1N4936G	400	280	400
1N4937G	600	420	600

## RATING AND CHARACTERISTIC CURVES

FIG. 1-TEST CIRCUIT DIAGRAM AND REVERSE RECOVERY TIME CHARACTERISTIC



NOTE: 1. RISE TIME=7ns MAX. INPUT IMPEDANCE=1 MOhms 22PF  
2. RISE TIME =10ns MAX. SOURCE IMPEDANCE=50 OHMS

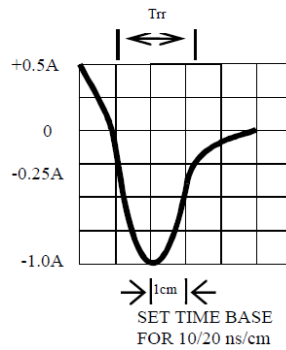


Fig. 2-MAXIMUM FORWARD CURRENT DERATING CURVE

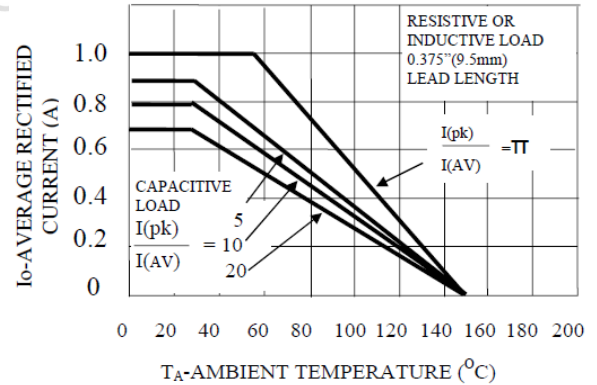


FIG. 3-TYPICAL JUNCTION CAPACITANCE

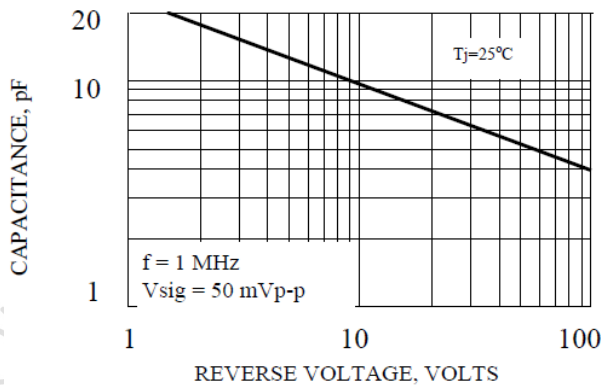


FIG. 4-TYPICAL REVERSE CHARACTERISTICS

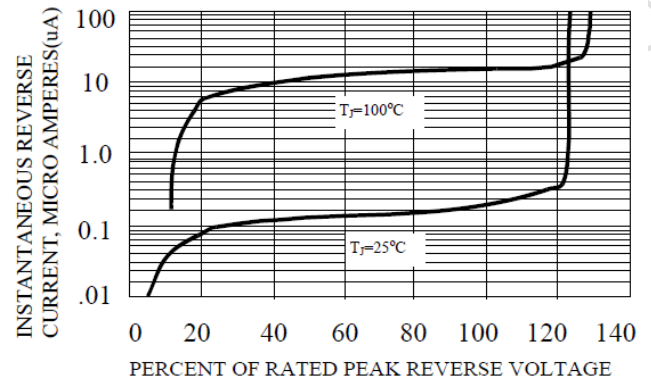


Fig. 5-MAXIMUM FORWARD SURGE CURRENT

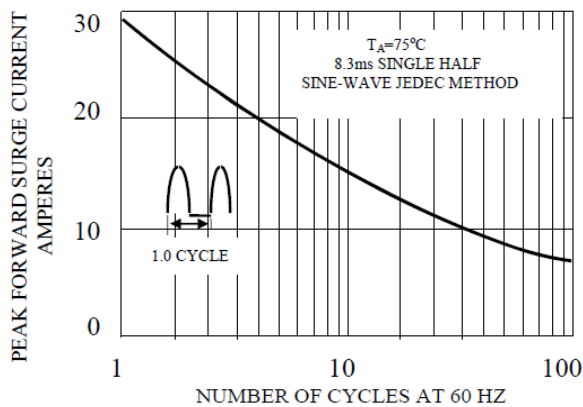
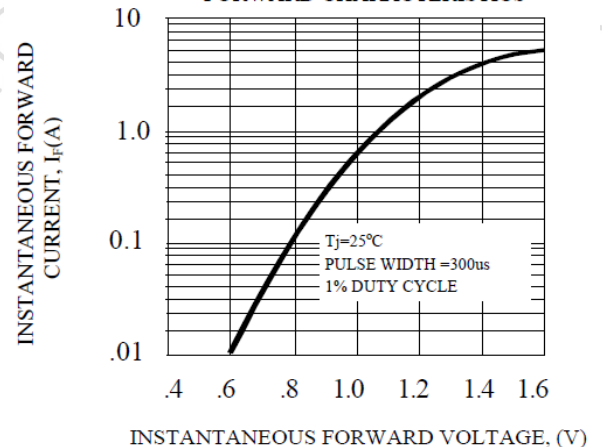


FIG. 6-TYPICAL INSTANTANEOUS FORWARD CHARACTERISTICS





# 1N4933G THRU 1N4937G SPECIFICATIONS

Rev. A

FRONTIERUSA.COM ©



# 1N4933G THRU 1N4937G SPECIFICATIONS

Rev. A

FRONTIERUSA.COM ©



# 1N4933G THRU 1N4937G SPECIFICATIONS

Rev. A

FRONTIERUSA.COM ©