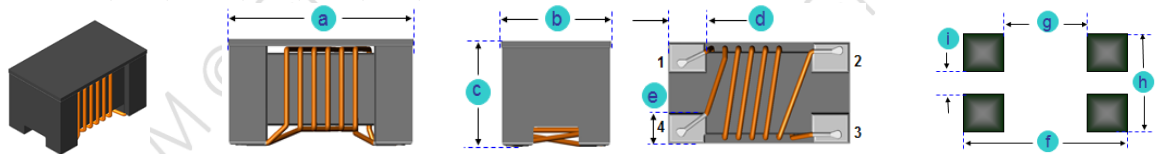


A. Electrical Specifications:

P/N	Impedance @100MH z (Ω)	DCR Max. (Ω)	Rated Current Max.(A)	Rated Voltage (Vdc)	Withstand Voltage (Vdc)	Insulation Resistance Min. (MΩ) @125Vdc
SCM2012FH-670_-I	67	0.30	0.400	50	125	10
SCM2012FH-900_-I	90	0.40	0.300	50	125	10
SCM2012FH-121_-I	120	0.45	0.250	50	125	10

B. Dimensions: mm (Inch)

Series	a	b	c	d	e	f	g	h	i
SCM2012FH-I	2.0 (0.079)	1.2 (0.047)	1.2 (0.047)	0.45 (0.018)	0.40 (0.016)	2.6 (0.102)	0.8 (0.031)	1.2 (0.047)	0.4 (0.016)
Tol.	±0.2 (0.008)	±0.2 (0.008)	±0.2 (0.008)	Typ.	Typ.	Typ.	Typ.	Typ.	Typ.



C. Schematic:



D. General Information:

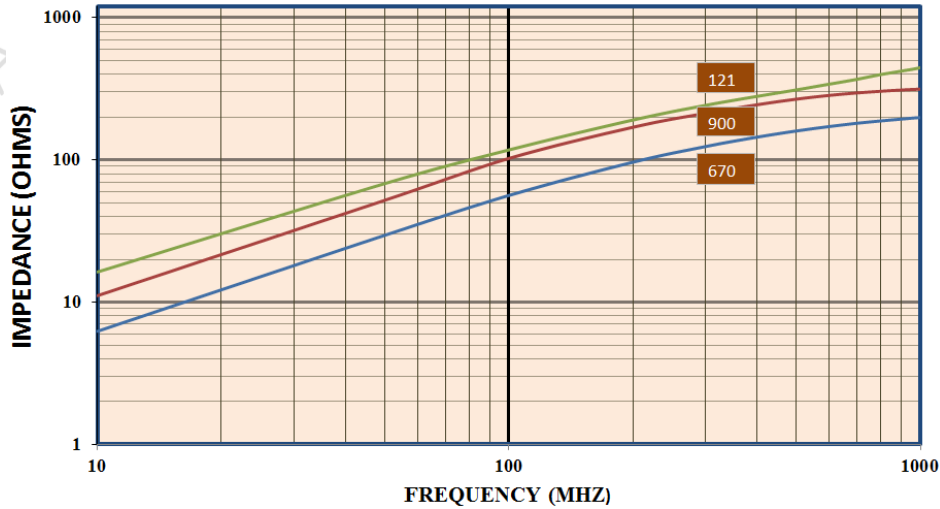
1. SCM2012FH-xxx_-I, “SCM2012FH” = P/N, “xxx” = Impedance, “_” = Tolerance.
2. Tolerance “_”: M= ± 20%
3. Small size & low profile
4. Maximum Temperature Rise: 15°C (when measured at 25°C ambient).
5. Impedance measured with HP4291B RF Impedance Analyzer
6. DCR measured using the 16502 milliohm meter.
7. Operating temperature: -40°C to +125°C
8. Storage temperature: -40°C to +125°C
9. Impedance and Current Range: From 67 Ohms (0.40 A) to 120 Ohms (0.25 A)
10. Unspecified values available on request.
11. MSL: Level 1.

E. Applications:

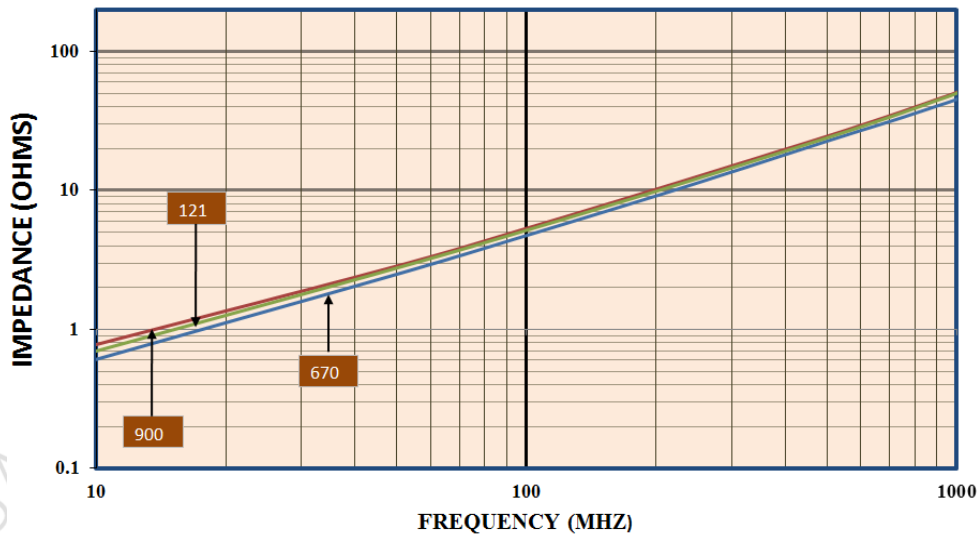
1. Common mode noise suppression of signal lines in high speed and high-density digital equipment, such as personal computers and peripherals.
2. The cut-off frequency of HDMI for differential mode is 3.5 GHz and 6GHz respectively, so they don’t interfere with higher-speed differential signals such as DVI, HDMI. The product is suited for use on the transmission side of digital TVs, DVD recorders and liquid crystal projectors.

F. Characteristics Curve:

Impedance vs. Frequency (Common Mode)



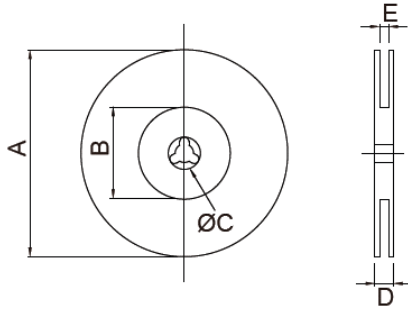
Impedance vs. Frequency (Normal Mode)



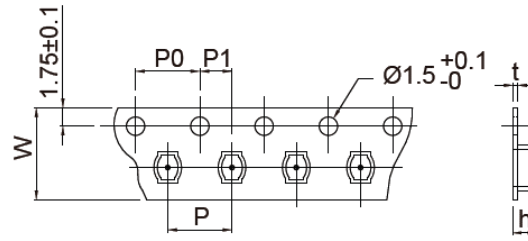
G. Supplementary Information:

1. Packaging Information

CARRIER TAPE REELS



TAPE DIMENSIONS (mm)



Plastic

SMD Common Mode Chip Coils

Series P/N	Reel dimensions (mm)					Tape dimensions (mm)						Parts per reel		Quantity per	
	A	B	C	D	E	W	P	P0	P1	h	t	7"	13"	Box	Carton
SCM2012FH-I	180	75	12	12.5	8.5	8	4	4	2	1.45	0.22	2,000	---	10,000	60,000

2. RoHS Reflow Solder Profile

Typical RoHS Reflow Profile

