



High Pressure Gauges (Solid Front Type)

OUTLINE

This is a pressure gauge for high pressure application, exceeding a range of 100 MPa (1000 kgf/cm²). Easy pressure reading is possible and simple handling is assured.

FEATURES

- This pressure gauge is applicable for the high pressure measuring in a range of 150 MPa to 700 MPa (1500 kgf/cm² to 7000 kgf/cm²)
- In case of element damage, to assure safety, the construction pressure is released from the rear side of the gauge is applied.
- This pressure gauge can be applied to air pressure, hydraulic pressure, chemical industry and other high pressure measuring.

* In case of selecting pressure gauge, choose the pressure range which can be used in between 30 ~ 65% of full scale, so that the gauge can give its full capacity.

SPECIFICATION

Fluid:


Gas or liquid

Size:

150 DIA., 200 DIA.

Mounting:

Stem •••  Type B (Mounting hole)

Panel •••  Type D (Mounting hole)

Connection:

G1/2B (PF), G1/2 (PF female)

* For other connections, please contact us.

Wetted parts material:

Socket 316st.st. or AISI4340
(Depending on range)

Element 316st.st., AISI4340 or MAS-1
(Depending on range)

Pressure range:

0 ~ 150 → 0 ~ 700MPa (0 ~ 1500 → 0 ~ 7000kgf/cm²)

Operating temperature:

-5 ~ 40°C

Accuracy:

±1.5%F.S. or ±2.0%F.S.
(Depending on range)

Scale angle:

230° or 270° (Depending on range)

Case material • finishing:

Aluminium alloy casting (AC7A) • Black

Treatment: (Option)

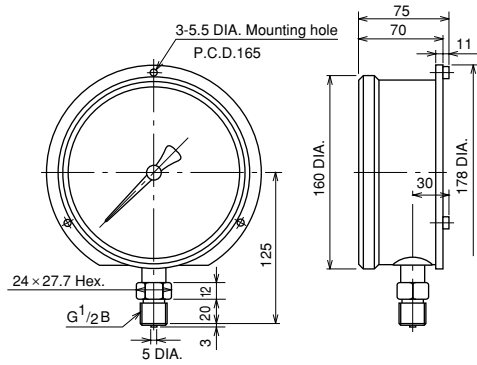
Use no water

Accuracy • scale angle • wetted parts material:

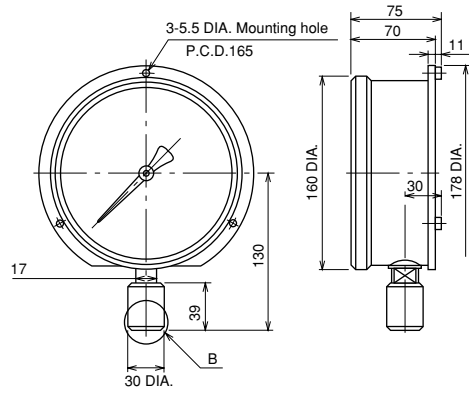
Pressure range MPa (kgf/cm ²)	Accuracy % F.S.	Scale angle	Wetted parts material	
			Element	Socket
0 ~ 150 (1500) ~ 200 (2000)	±1.5	270°	316st.st.	316st.st.
0 ~ 300 (3000) ~ 400 (4000) ~ 500 (5000) ~ 600 (6000)	±2	230°	AISI4130	AISI4340
0 ~ 700 (7000)			MAS-1	

DIMENSIONS 1

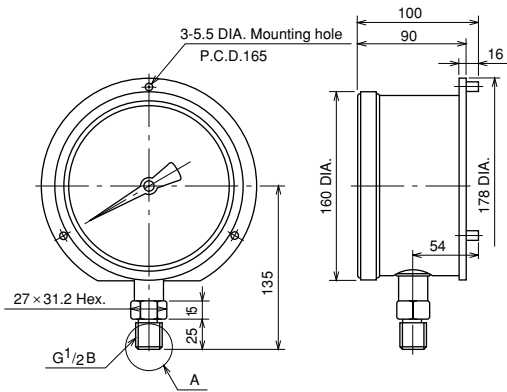
150 DIA. Stem



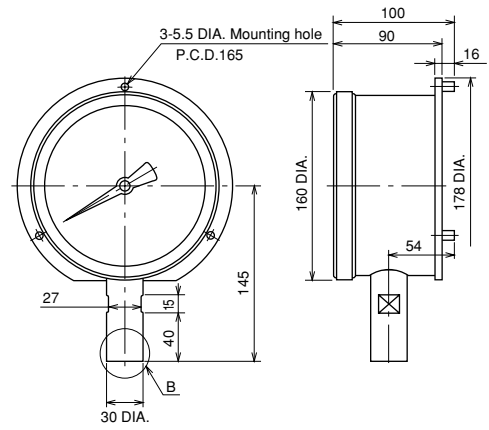
GH21-241



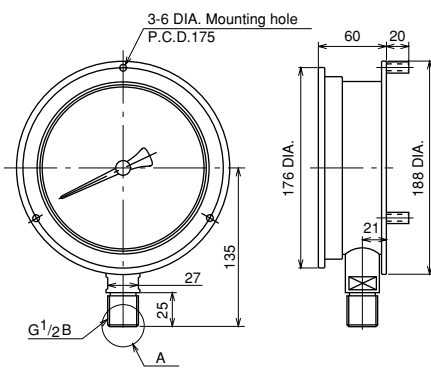
GH21-2R1



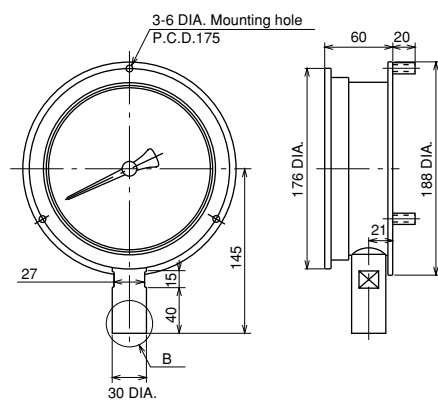
GH22-241



GH22-2R1



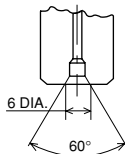
GH23-241



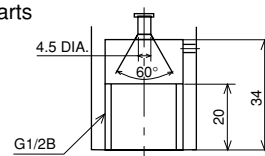
GH23-2R1

[Connection details]

A parts

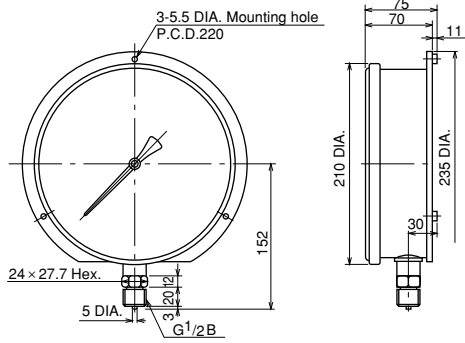


B parts

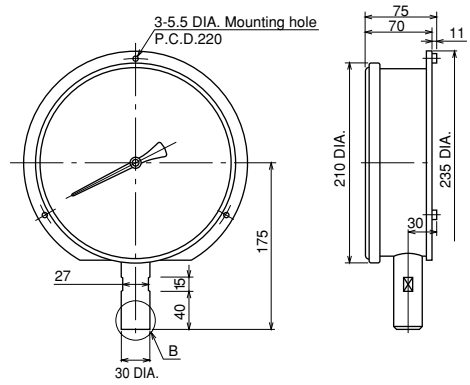


DIMENSIONS 2

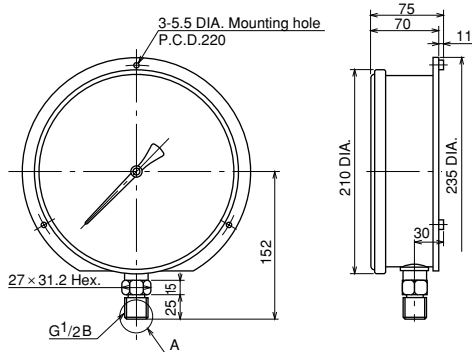
200 DIA. Stem



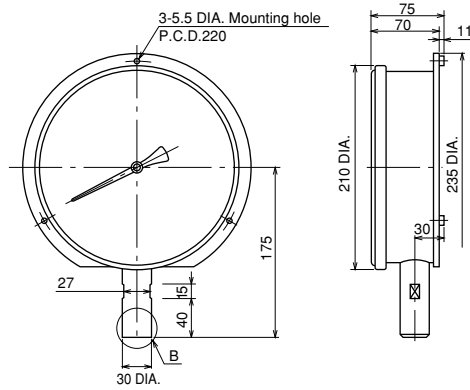
GH31-241



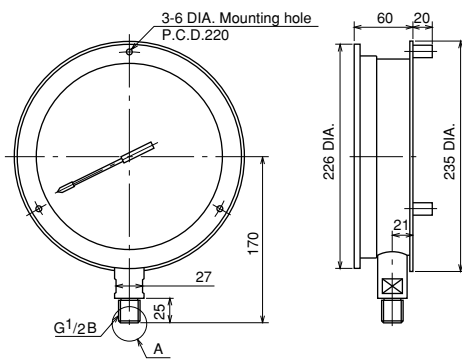
GH31-2R1



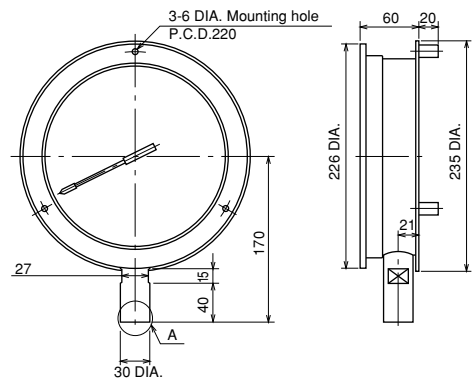
GH32-241



GH32-2R1



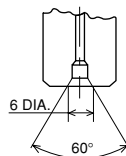
GH33-241



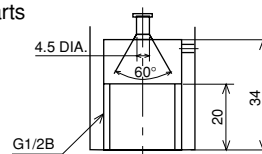
GH33-2R1

[Connection details]

A parts

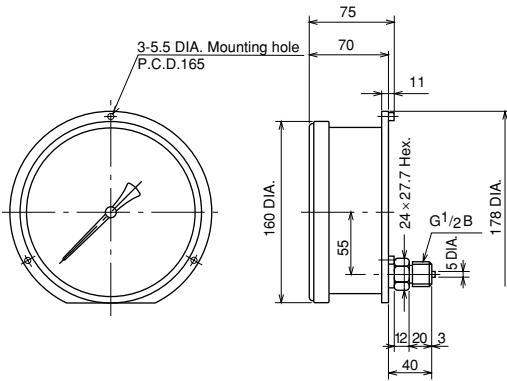


B parts

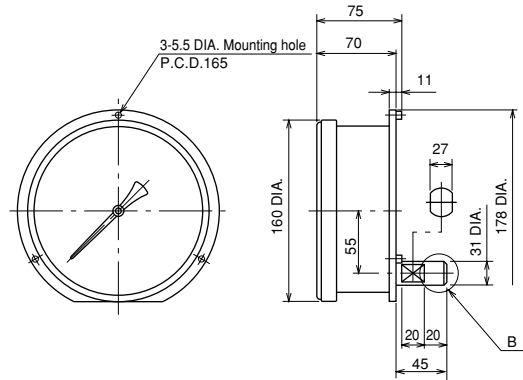


DIMENSIONS 3

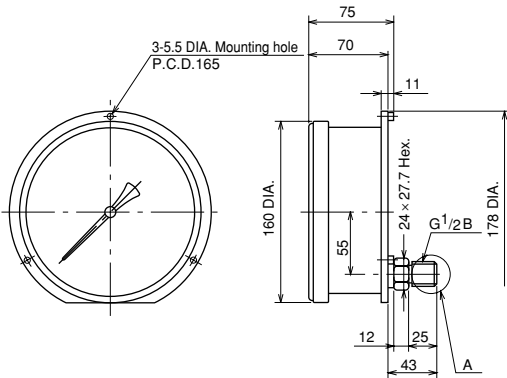
150 DIA. Panel



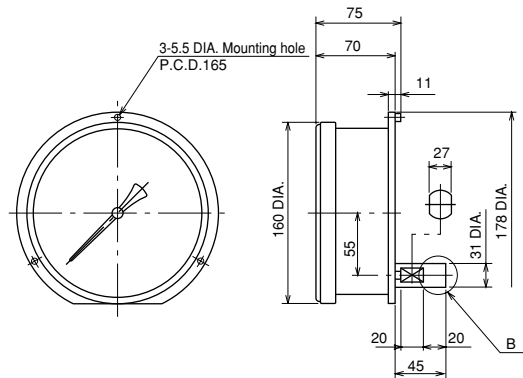
GH26-241



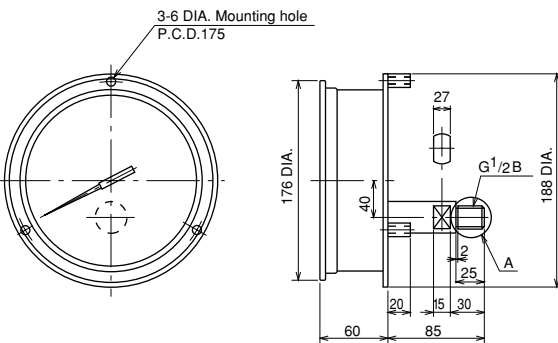
GH26-2R1



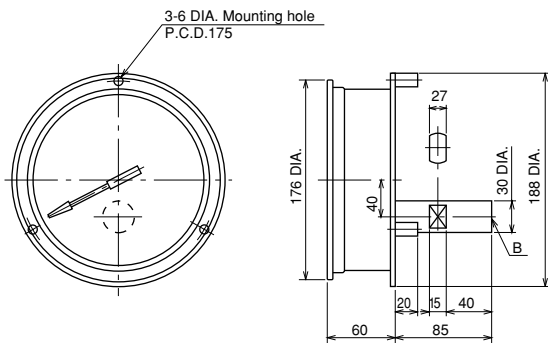
GH27-241



GH27-2R1



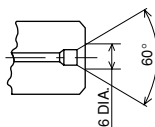
GH28-241



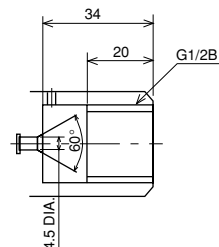
GH28-2R1

[Connection details]

A parts

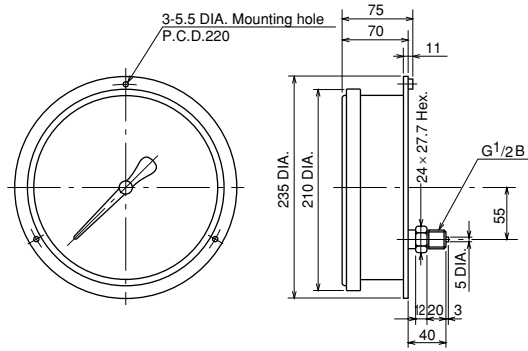


B parts

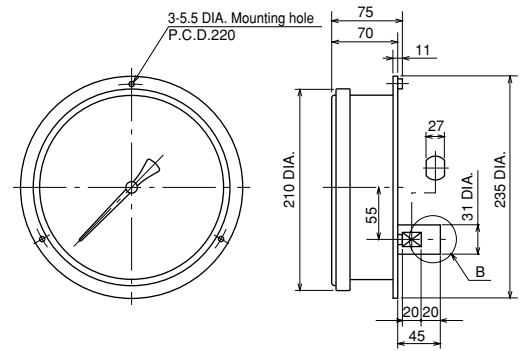


DIMENSIONS 4

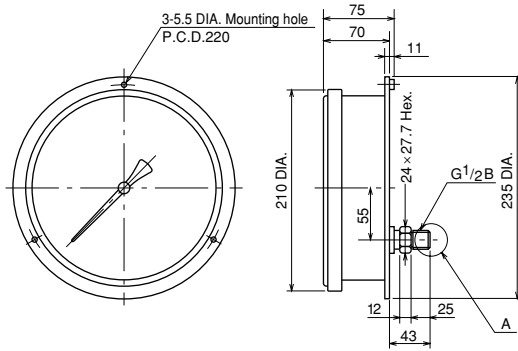
200 DIA. Panel



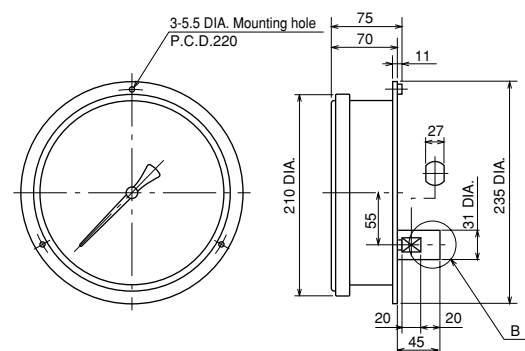
GH36-241



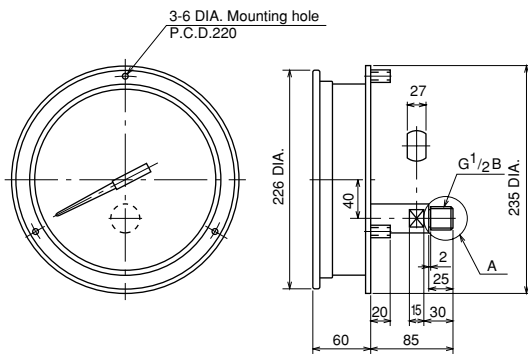
GH36-2R1



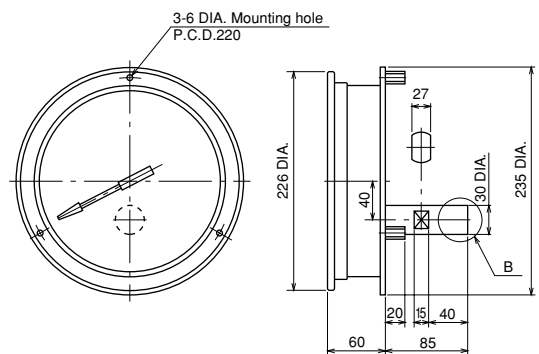
GH37-241



GH37-2R1



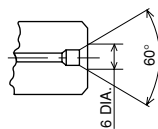
GH38-241



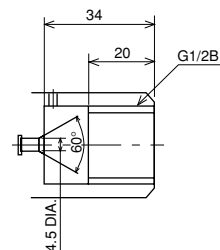
GH38-2R1

[Connection details]

A parts



B parts

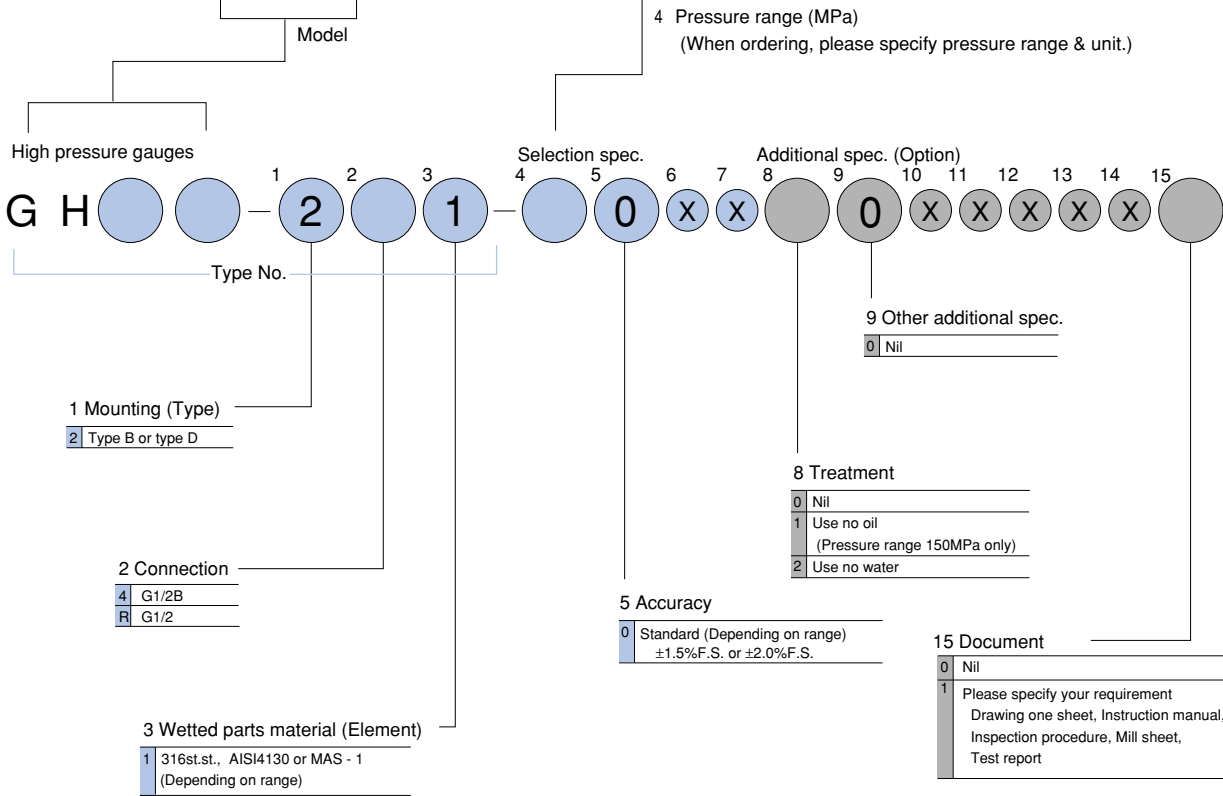


Type No. constitution

Please specify Type No., each specification and range, when ordering.

Note: For this Model, there is no applicable item for the figures X, but please specify X when ordering.

Size	Mounting	Model	Pressure range (MPa)
150 DIA.	Stem Type B	G H 2 1 — 2 — 1 — 1	0 ~ 150, 200
		G H 2 2 — 2 — 1 — 2	0 ~ 300, 400
		G H 2 3 — 2 — 1 — 3	0 ~ 500, 600
	Panel Type D	G H 2 6 — 2 — 1 — 4	0 ~ 700
		G H 2 7 — 2 — 1 — 1	0 ~ 150, 200
		G H 2 8 — 2 — 1 — 2	0 ~ 300, 400
200 DIA.	Stem Type B	G H 3 1 — 2 — 1 — 1	0 ~ 150, 200
		G H 3 2 — 2 — 1 — 2	0 ~ 300, 400
		G H 3 3 — 2 — 1 — 3	0 ~ 500, 600
	Panel Type D	G H 3 6 — 2 — 1 — 4	0 ~ 700
		G H 3 7 — 2 — 1 — 1	0 ~ 150, 200
		G H 3 8 — 2 — 1 — 2	0 ~ 300, 400



The contents in the catalogue are subject to change without notice.

NAGANO KEIKI CO., LTD.



UEDA FACTORY (JQA-0794)
 MARUKO FACTORY (JQA-0789)

HEAD OFFICE & OVERSEAS : 1-30-4, HIGASHIMAGOME OHTA-KU, TOKYO, JAPAN.
 TELEPHONE : 03 (3776) 5328
 SALES DEPT FAX : 03 (3776) 5447
 TELEX : 2468452 NKSTKY J

OVERSEAS PLANTS OR AFFILIATES: U.S.A., KOREA, GERMANY
 OVERSEAS SALES NETWORK: AUSTRALIA, HONG KONG, INDONESIA, KOREA, MALAYSIA, PHILIPPINES, SINGAPORE, TAIWAN, THAILAND, U.S.A.

