



Process Industrial Pressure Gauges

(Old JIS standard products are also available.)

OUTLINE

Corresponds to JIS B 7505-1999 Bourdon tube type pressure gauge. It is a pressure gauge with a construction which transmits the elastic deformation (movement) of a Bourdon tube to a pointer, and is easy to handle because its construction is simple. Also, wide pressure range measurements are performed and it is used in a wide range of fields.

FEATURES

- Can also be used under rain, frost, etc. conditions by adoption of sealed case. (JIS C 0920 IP x 2 equivalent)
- Pressure gauge measurement range is wide and it can respond even when corrosion-proof is demanded.

* When selecting a pressure gauge, select the pressure range over which the gauge will demonstrate top performance in a working pressure range within 30 to 65% of full scale. Also check whether the wetted parts material is suitable for the gas or fluid to be measured.

* When using with oxygen, please specify "Use no oil". When using with acetylene, please specify corrosion-proof use and "Use no oil".

SPECIFICATIONS 1

Fluid:

Gas or liquid

Case construction:

Sealed construction which is equivalent to JIS C 0920, drip-proof, type II but not sealed completely.

Size:

60 DIA. (Model: BA□□), 75 DIA. (Model: BC□□)
 100 DIA. (Model: BE□□), 150 DIA. (Model: BG□□)
 200 DIA. (Model: BJ□□), 300 DIA. (Model: BL□□)

Mounting:

Stem ...



Type A



Type B (Mounting hole)

Panel ...



Type D (Mounting clamp, mounting hole)

Connection:

G1/4B (PF), G3/8B (PF), G1/2B (PF), 1/2NPT
 R1/4 (PT), R3/8 (PT), R1/2 (PT), 1/4NPT, 3/8NPT
 * For other connections, please contact us.

Wetted parts materials:

Wetted parts generally mean the Bourdon tube and socket. These parts contact the measured medium (gas or liquid) directly.

Purpose	Socket	Bourdon tube
General use	CAC203, C3604BD SUS316 or SCS14 (Depending on pressure range)	C6872T or SUS316 (Depending on pressure range, performance)
Ammonia use Corrosion-proof use	SUS316 or SCS14	SUS316

Pressure range:

0~40kPa → 0~100MPa
 -0.1~0 → -0.1~2.5MPa
 * For details, refer to the Minimum Graduation table in SPECIFICATIONS 4.

Accuracy:

±1.6% F.S. (JIS standard)
 ±1.5% F.S. (Old JIS standard mark)
 ±1.0% F.S. upon request.
 (100DIA., 150DIA. and 200DIA. for the range 0.1MPa or over)

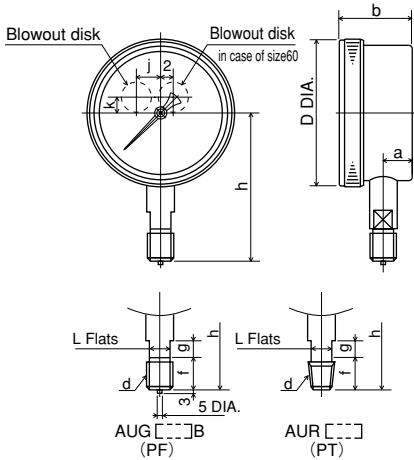
Process Industrial Pressure Gauges

SPECIFICATIONS 2

Mounting · Dimensions: (Unit:mm)

Stem

Type A ... Socket is mounted directly onto the pipe. (Stem mounting)



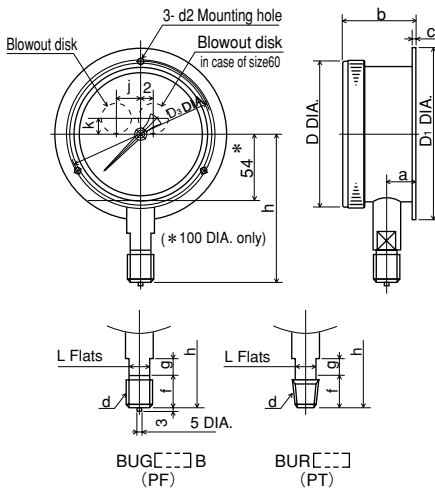
Size	Shape of connection d	Case						connection				Model number
		D	a	b	j	k	f	g	L	h		
60	G1/4B R1/4	70	11.5	32	—	8	16	10	12	58	BA10-1□□	
75	G3/8B R3/8	84 (86)	16.5	41 (41.5)	15	10	18	12	14	70	BC10-1□□ BC12-1□□	
	G3/8B R3/8	109 (110)	22 (23)	52.5 (54)	20	10	18	15	14	108	BE10-1□□ BE12-1□□	
100	G1/2B R1/2	159 (162)	25	59 (59.5)	20	10	18	15	14	123	BG10-1□□ BG12-1□□	
	G1/2B R1/2	159 (162)	25	59 (59.5)	20	10	20	15	17	125	BG10-1□□ BG12-1□□	

() Dimension of plastic case

Weight:

Size	Weight (g)
60	Approx. 300
75	500
100	800
150	1600
200	2400
300	4600

Type B ... Back flange is fastened to panel by screw. (Surface mounting)



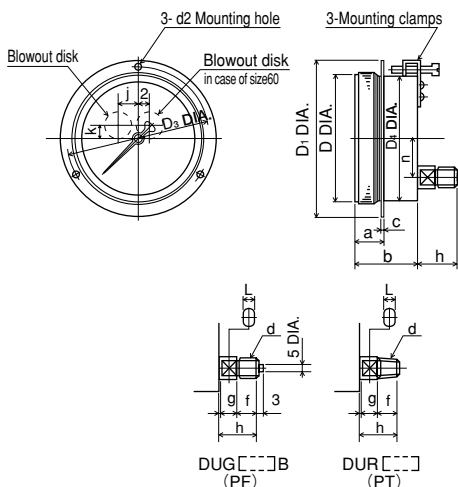
Size	Shape of connection d	Case						connection				Model number			
		D	D ₁	D ₂	a	b	c	d ₂	j	k	f		g	L	h
60	G1/4B R1/4	70	80	72	11.5	32	2	4.5	—	8	16	10	12	58	BA10-2□□
75	G3/8B R3/8	84 (86)	98	88	16.5	41 (41.5)	2 (4)	4.5	15	10	18	12	14	70	BC10-2□□ BC12-2□□
	G3/8B R3/8	109 (110)	128	115	22 (23)	52.5 (54)	2.5 (4)	5.5	20	10	18	15	14	108	BE10-2□□ BE12-2□□
100	G1/2B R1/2	159 (162)	178	165	25	59 (59.5)	2.5 (4.5)	5.5	20	10	18	15	14	123	BG10-2□□ BG12-2□□
	G1/2B R1/2	159 (162)	178	165	25	59 (59.5)	2.5 (4.5)	5.5	20	10	20	15	17	125	BG10-2□□ BG12-2□□
200	G1/2B R1/2	210	235	220	24	60	2.5	5.5	20	10	20	15	17	152	BJ10-2□□
300	G1/2B R1/2	312	340	323	28	73	3.5	5.5	0	0	20	15	17	205	BL10-2□□

() Dimension of plastic case

For surface mounting, please provide a 25mm dial. hole in the wall for blowout disk.

Panel

Type D ... Panel mounting by screw or clamp.



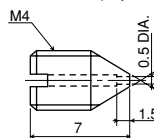
Size	Shape of connection d	Case						connection				Model number					
		D	D ₁	D ₂	D ₄	a	b	c	d ₂	n	j		k	f	g	L	h
60	G1/4B R1/4	70	80	72	64	14	32	2	* 3.3	20	—	8	16	10	12	28	BA15-□□□
75	G3/8B R3/8	84	98	88	77	18	40.5	2	* 3.3	25	15	10	18	12	14	30	BC15-□□□
	G3/8B R3/8	109 (110)	128	119	102 (104)	17.5 (20.5)	45 (46.5)	2.5 (4)	5.5	35	20	10	18	12	14	30 (29) 32 (31)	BE15-□□□ BE17-□□□
100	G1/2B R1/2	159 (162)	178	169	152	21.5	61	2.5	5.5	55	20	10	18	12	14	30	BG15-□□□
	G1/2B R1/2	159 (162)	178	169	152	21.5	61	2.5	5.5	55	20	10	20	12	17	32	BG15-□□□
200	G1/2B R1/2	210	235	220	203	28	63	3	5.5	55	20	10	20	12	17	32	BJ15-□□□
300	G1/2B R1/2	312	340	323	304	30.5	64	3.5	5.5	55	0	35	20	12	17	32	BL15-□□□

() Dimension of plastic case

* For M3 screw.

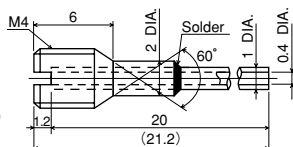
For surface mounting, please provide a 25mm dial. hole in the wall for blowout disk.

Throttle: (Option)



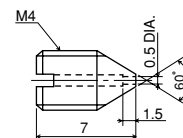
FS10-011

Material:
C3604BD



FS10-081 (With pipe)

Material: C3604BD
(Pipe: C1100T)



Corrosion-Proof:
FS10-013
Material: SUS316

SPECIFICATIONS 3

Specifications & additional spec.

Blowout disk:

When the Bourdon tube explodes in an emergency, it vents the internal pressure from the blowout disk and blowout disk prevents the window from puncturing.

Note: To maintain normal function, when installing, please provide a space of at least 10mm behind the gauge.

Don't process or stop up the blowout disk.

The GA2□ pressure gauge is a solid front type (partition protected type). Since the entire rear plate is a safety window, when installing to a wall, use provide a gap of 10 mm or greater by using a spacer, etc.

Movement:

We can supply different movement (optional) in accordance with the application. (SUS movement, vibration-proof movement, etc.)

Pointer:

In addition to standard type, zero adjustable pointer is also available. If maximum pointer or setting pointer is required, please choose from selection spec.

Window:

In addition to standard glass, special material glass, such as tempered glass, non-glare glass are also available.

Function:

Standard, Steam use (M), Heat-proof (H), Vibration-proof (V), Steam use & Vibration-proof (MV), Heat-proof · Vibration proof (HV)
* Division of application is based on JISB7505 Bourdon gauge.

Treatment:

Use no oil / Use no water ... Manufactured so that oil and/or water does not remain on the wetted parts.

Option:

Case color ... For non-standard, please specify.

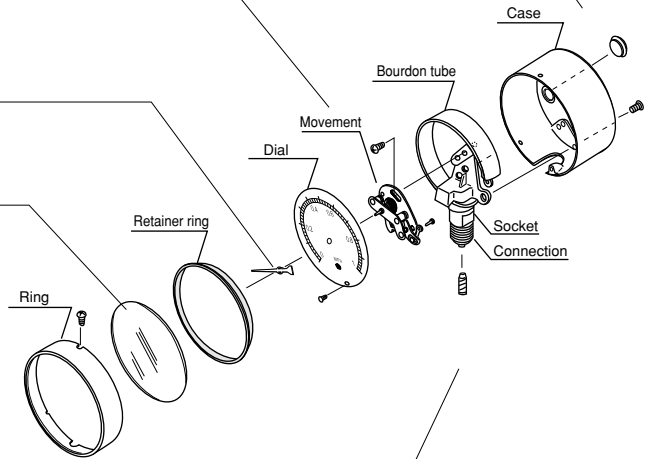
Connection:

We have three methods of connecting the wetted parts.

Soldering ... For brass series material.

Silver soldering ... For brass series material and stainless steel material.

TIG welding ... For welding between stainless steel material.



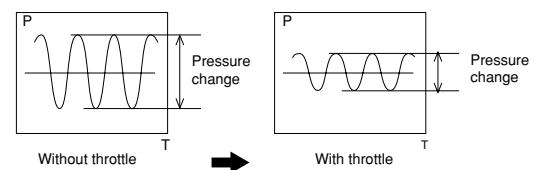
Throttle: (Option)

The input port is equipped with a throttle to reduce pulsating pressure. Select it from the following models: FS10-011, FS10-081 (with pipe), corrosion-proof use FS10-013

Pulsating pressure:

Caused by the pump characteristic of the pump generator and is the general term for the top and bottom pressure drift and is very harmful to a pressure gauge.

[THROTTLE EFFECT]



CASE COLOR, CASE MATERIAL

Case Color (Standard color)	Mounting · type Type	Type Manufactured or not	Size						
			60 DIA.	75 DIA.	100 DIA.	150 DIA.	200 DIA.	300 DIA.	
Black	Stem Type A	Metal (Aluminium alloy)	AC7A	—	—	—	—	—	—
	Type B			—	—	—	—	○	○
	Panel Type D (Mounting clamp)			—	○	—	○	○	○
	Type D (Mounting hole)			—	○	—	○	○	○
	Stem Type A	Metal (Aluminium alloy)	ADC12	○	○	○	○	—	—
	Type B			○	○	○	○	—	—
	Panel Type D (Mounting clamp)			○	—	○	—	—	—
	Type D (Mounting hole)			○	—	○	—	—	—
Black	Stem Type A	Plastic	Bakelite	—	○	○	○	—	—
	Type B			—	○	○	○	—	—
	Panel Type D (Mounting hole)			—	—	○	—	—	—

Process Industrial Pressure Gauges

SPECIFICATIONS 4

Minimum graduation:

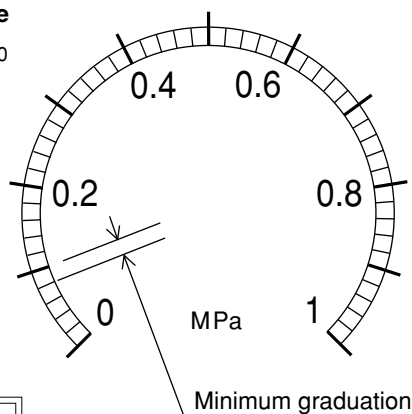
Scale divisions are different according to range and dial size. Minimum graduations are shown in the following table.

Pressure Range (MPa)	Size · Accuracy										
	60 DIA.		75 DIA.		100 · 150 DIA.			200 DIA.			300 DIA.
	JIS	Old JIS	JIS	Old JIS	JIS		Old JIS	JIS		Old JIS	Old JIS
	1.6%	1.5%	1.6%	1.5%	1.6%	1.0%	1.5%	1.6%	1.0%	1.5%	1.5%
0 ~ 40kPa	—	—	—	—	1	—	1	1	—	1	—
~ 0.05	—	—	—	—	—	—	0.001	—	—	0.001	—
~ 0.06	—	—	—	—	0.001	—	—	0.001	—	—	—
~ 0.08	—	—	—	—	—	—	0.002	—	—	0.002	—
~ 0.1	0.002	0.005	0.002	0.005	0.002	0.002	0.002	0.002	0.002	0.002	0.002
~ 0.16	0.005	—	0.005	—	0.005	0.002	—	0.005	0.002	—	—
~ 0.2	—	0.01	—	0.01	—	—	0.005	—	—	0.005	0.005
~ 0.25	0.005	—	0.005	—	0.005	0.005	—	0.005	0.005	—	—
~ 0.3	—	0.01	—	0.01	—	—	0.01	—	—	0.01	0.01
~ 0.4	0.01	0.02	0.01	0.02	0.01	0.005	0.01	0.01	0.005	0.01	0.01
~ 0.6	0.01	0.02	0.01	0.02	0.01	0.01	0.02	0.01	0.01	0.02	0.02
~ 1	0.02	0.05	0.02	0.05	0.02	0.02	0.02	0.02	0.02	0.02	0.02
~ 1.5	—	0.05	—	0.05	—	—	0.05	—	—	0.05	0.05
~ 1.6	0.05	—	0.05	—	0.05	0.02	—	0.05	0.02	—	—
~ 2	—	0.1	—	0.1	—	—	0.05	—	—	0.05	0.05
~ 2.5	0.05	0.1	0.05	0.1	0.05	0.05	0.05	0.05	0.05	0.05	0.05
~ 3.5	—	0.1	—	0.1	—	—	0.1	—	—	0.1	0.1
~ 4	0.1	—	0.1	—	0.1	0.05	—	0.1	0.05	—	—
~ 5	—	0.2	—	0.2	—	—	0.1	—	—	0.1	0.1
~ 6	0.1	—	0.1	—	0.1	0.1	—	0.1	0.1	—	—
~ 7	—	0.2	—	0.2	—	—	0.2	—	—	0.2	0.2
~ 10	0.2	0.5	0.2	0.5	0.2	0.2	0.2	0.2	0.2	0.2	0.2
~ 15	—	0.5	—	0.5	—	—	0.5	—	—	0.5	0.5
~ 16	0.5	—	0.5	—	0.5	0.2	—	0.5	0.2	—	—
~ 25	0.5	1	0.5	1	0.5	0.5	0.5	0.5	0.5	0.5	0.5
~ 35	—	—	—	1	—	—	1	—	—	1	—
~ 40	—	—	1	—	1	0.5	—	1	0.5	—	—
~ 50	—	—	—	2	—	—	1	—	—	1	—
~ 60	—	—	—	—	1	1	—	1	1	—	—
~ 70	—	—	—	—	—	—	2	—	—	2	—
~ 100	—	—	—	—	2	2	2	2	2	2	—
-0.1 ~ 0	0.002	0.005	0.002	0.005	0.002	0.002	0.002	0.002	0.002	0.002	0.002
~ 0.1	0.005	0.01	0.005	0.01	0.005	0.002	0.005	0.005	0.002	0.005	0.005
~ 0.16	0.005	—	0.005	—	0.005	0.005	—	0.005	0.005	—	—
~ 0.2	—	0.01	—	0.01	—	—	0.01	—	—	0.01	0.01
~ 0.25	0.01	—	0.01	—	0.01	0.005	—	0.01	0.005	—	—
~ 0.3	—	0.02	—	0.02	—	—	0.01	—	—	0.01	0.01
~ 0.4	0.01	0.02	0.01	0.02	0.01	0.01	0.01	0.01	0.01	0.01	0.01
~ 0.6	0.02	0.02	0.02	0.02	0.02	0.01	0.02	0.02	0.01	0.02	0.02
~ 1	0.02	0.05	0.02	0.05	0.02	0.02	0.02	0.02	0.02	0.02	0.02
~ 1.5	—	0.05	—	0.05	—	—	0.05	—	—	0.05	0.05
~ 1.6	0.05	—	0.05	—	0.05	0.02	—	0.05	0.02	—	—
~ 2	—	0.1	—	0.1	—	—	0.05	—	—	0.05	0.05
~ 2.5	0.05	0.1	0.05	0.1	0.05	0.05	0.05	0.05	0.05	0.05	0.05

* The ranges and sizes in are type approved products.

Example of scale

Size 100 · 150



TYPE APPROVAL

If an approved product is required:

We were approved and qualified as a state-approved manufacturer and the pressure ranges and size of the gauges specified in the table in "Specifications 4" were obtained on November 1, 1996.

From this entitlement, our inspection equals that of the previous inspection.

Also, instead of the approved mark, there will be the standard conformance mark of proof labelled on the approved products.

Scale Options

Capacity scale, dual scale, printed words or colored circle, etc. are available as option.

Type Approval Number:

Brass as the material of the Bourdon Tube x 951
SUS as x 9618

State-Approved Manufacturer Number:

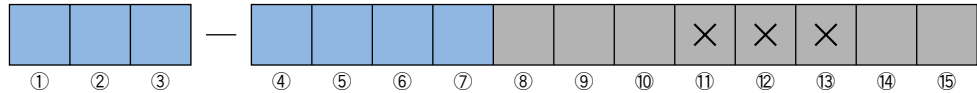
272001

Model number configuration

When ordering, please specify the model number, each spec and range.

Model name

B A 1



Process Industrial Pressure Gauges
(60 DIA.)

Model number		Selective spec.		Additional spec. (Option)	
Model	0	Stem	Metal case		
	5	Panel	Metal case		
① Mounting	1	Stem	Type A		
	2	Panel	Type D (Mounting clamp)		
② Connection	2	Stem	G1/4B		
	7	Panel	R1/4		
③ Wetted parts materials	1	General use			
	2	Ammonia use	SUS		
	3	Corrosion-proof use	SUS		
(When ordering, please specify the range and units separately.)	④ Pressure range (MPa)	2	-0.1~0.1, 0.16, 0.2, 0.25, 0.3, 0.4, 0.6, 1, 1.5, 1.6, 2, 2.5		
		3	-0.1~0, 0~0.1, 0.16, 0.2, 0.25, 0.3, 0.4, 0.6, 1, 1.5, 1.6, 2, 2.5, 3.5		
		4	0~4, 5, 6, 7, 10		
		5	0~15, 16, 25 (BA1□ for 35MPa is not available)		
⑤ Function	0	Standard			
	A	M: Steam use			
	C	V: Vibration-proof type			
	D	MV: Steam use · Vibration-proof type			
⑥ Pointer	0	Standard			
	2	Zero adjustable (spring type) Not a type-approved product.			
⑦ Window	0	Standard			
	2	Tempered glass			
	3	Non-glare treatment glass			
	6	Non-frost coat treatment glass			
⑧ Treatment	0	Nil			
	1	Use no oil			
	2	Use no water			
	3	Use no oil & water			
⑨ Throttle	0	Nil			
	1	FS10-011 or FS10-013 Corrosion-proof use			
	3	FS10-081 (With pipe)			
⑩ Other additional spec.	0	Nil			
	1	Required (Please specify the desired documents separately.) Approved products, Dial scale, Case color Movement			
⑭ Class	J	JIS Accuracy ±1.6%			
	X	Not JIS			
⑮ Documents	0	Nil			
	1	Required (Please specify the desired documents separately.) Submission drawings, instruction manual, inspection procedure, mill sheet, test report (1 pc 1 copy), traceability certificate, attended inspection			

③ Wetted parts materials

Purpose	Socket	Bourdon tube	Connecting
1 General use (Not available for 50MPa or over.)	Pressure range 35MPa or less: CAC203 But BA10 only C3604BD Pressure range 35MPa or over: SUS316 or SCS14	Pressure range 3.5MPa or less: · General type, Vibration-proof type C6872T · Steam use corrosion-proof type, Heat-proof type Steam use · vibration-proof type, Heat-proof · vibration-proof type SUS316 Pressure range 3.5MPa or over: SUS316	Soldering for between brass and SUS316 Silver soldering for brass and SUS316 Tig-welding for between SUS316
2 Ammonia use	*SUS316 or SCS14	SUS316	Tig-welding
3 Corrosion-proof use	*SUS316 or SCS14	SUS316	Tig-welding

*SUS316 is BA10 only

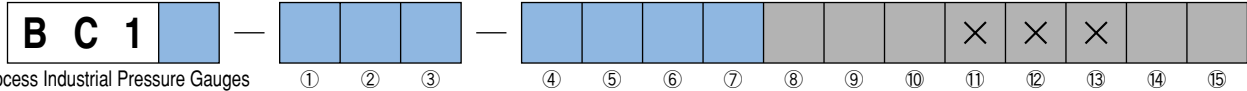
Specify "X" if there is no specification item.

Process Industrial Pressure Gauges

Model number configuration

When ordering, please specify the model number, each spec and range.

Model name



Process Industrial Pressure Gauges
(75 DIA.)

Model number	Selective spec.	Additional spec. (Option)
--------------	-----------------	---------------------------

Model	0	Stem	Metal case
	2	Stem	Plastic case
	5	Panel	Metal case

① Mounting	Stem		Panel
	1	Type A	Type D (Mounting clamp)
	2	Type B (Mounting hole)	Type D (Mounting hole)

② Connection	2	G1/4B	Not available BC12
	3	G3/8B	
	7	R1/4	Not available BC12
	8	R3/8	

③ Wetted parts materials	1	General use	Not available for 50MPa
	2	Ammonia use	SUS
	3	Corrosion-proof use	SUS

(When ordering, please specify the range and units separately.)

④ Pressure range (MPa)	2	-0.1~0.1, 0.16, 0.2, 0.25, 0.3, 0.4, 0.6, 1, 1.5, 1.6, 2, 2.5
	3	-0.1~0, 0~0.1, 0.16, 0.2, 0.25, 0.3, 0.4, 0.6, 1, 1.5, 1.6, 2, 2.5, 3.5
	4	0~4, 5, 6, 7, 10
	5	0~15, 16, 25, 35
	6	0~40, 50

⑤ Function	0	Standard
	A	M: Steam use
	C	V: Vibration-proof type
	D	MV: Steam use · Vibration-proof type

⑥ Pointer	0	Standard
	1	Zero adjustable (micro meter type) Not a type-approved product.
	2	Zero adjustable (spring type) Not a type-approved product.
	5	Max pointer
	6	Setting pointer

⑦ Window	0	Standard
	2	Tempered glass
	3	Non-glare treatment glass
	6	Non-frost coat treatment glass

⑧ Treatment	0	Nil
	1	Use no oil
	2	Use no water
	3	Use no oil & water

⑨ Throttle	0	Nil
	1	FS10-011 or FS10-013 Corrosion-proof use
	3	FS10-081 (With pipe)

⑩ Other additional spec.	0	Nil
	1	Required (Please specify the desired documents separately.) Approved products, Dial scale, Case color Movement

⑭ Class	J	JIS Accuracy ±1.6%
	X	Not JIS

⑮ Documents	0	Nil
	1	Required (Please specify the desired documents separately.) Submission drawings, instruction manual, inspection procedure, mill sheet, test report (1 pc 1 copy), traceability certificate, attended inspection

③ Wetted parts materials

Purpose	Soket	Bourdon tube	Connecting
1 General use (Not available for 50MPa or over.)	Pressure range 35MPa or less: CAC203 But BA10 only C3604BD Pressure range 35MPa or over: SUS316 or SCS14	Pressure range 3.5MPa or less: · General type, Vibration-proof type C6872T · Steam use corrosion-proof type, Heat-proof type Steam use · vibration-proof type, Heat-proof · vibration-proof type SUS316 Pressure range 3.5MPa or over: SUS316	Soldering for between brass and SUS316 Silver soldering for brass and SUS316 Tig-welding for between SUS316
2 Ammonia use	* SUS316 or SCS14	SUS316	Tig-welding
3 Corrosion-proof use	* SUS316 or SCS14	SUS316	Tig-welding

*SUS316 is BA10 only

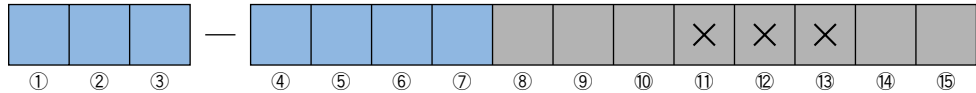
Specify "X" if there is no specification item.

Model number configuration

When ordering, please specify the model number, each spec and range.

Model name

B E 1



Process Industrial Pressure Gauges
(100 DIA.)

Model number		Selective spec.	Additional spec. (Option)	
Model	0	Stem	Metal case	
	2	Stem	Plastic case	
	5	Panel	Metal case	
	7	Panel	Plastic case	
① Mounting	Stem		Panel	
	1	Type A	Type D (Mounting clamp)	
	2	Type B (Mounting hole)	Type D (Mounting hole)	
② Connection	3	G3/8B	9	R1/2
	4	G1/2B	K	1/4NPT
	6	1/2NPT	L	3/8NPT
	8	R3/8		
③ Wetted parts materials	1	General use	Not available for 50MPa or over	
	2	Ammonia use	SUS	
	3	Corrosion-proof use	SUS	
(When ordering, please specify the range and units separately.)	④ Pressure range (MPa)	1	0~40kPa, 0~0.05, 0.06, 0.08 BE17 is available for 0.1MPa or over.	
		2	-0.1~0.1, 0.16, 0.2, 0.25, 0.3, 0.4, 0.6, 1, 1.5, 1.6, 2, 2.5	
		3	-0.1~0, 0~0.1, 0.16, 0.2, 0.25, 0.3, 0.4, 0.6, 1, 1.5, 1.6, 2, 2.5, 3.5	
		4	0~4, 5, 6, 7, 10	
		5	0~15, 16, 25, 35	
		6	0~40, 50, 60, 70	
		7	0~100	
⑤ Function	0	Standard	C	V: Vibration-proof type
	A	M: Steam use	D	MV: Steam use · Vibration-proof type
	B	H: Heat-proof type	E	HV: Heat-proof · Vibration-proof type
⑥ Pointer	0	Standard		
	1	Zero adjustable (micro meter type) Not a type-approved product.		
	2	Zero adjustable (spring type) Not a type-approved product.		
	5	Max pointer		
	6	Setting pointer		
⑦ Window	0	Standard		
	2	Tempered glass		
	3	Non-glare treatment glass		
	6	Non-frost coat treatment glass		
⑧ Treatment	0	Nil		
	1	Use no oil		
	2	Use no water		
	3	Use no oil & water		
⑨ Throttle	0	Nil		
	1	FS10-011 or FS10-013 Corrosion-proof use		
	3	FS10-081 (With pipe)		
⑩ Other additional spec.	0	Nil		
	1	Required (Please specify the desired documents separately.) Approved products, Dial scale, Case color Movement, Accuracy 1%		
⑭ Class	J	JIS Accuracy ±1.6%		
	X	Not JIS		
⑮ Documents	0	Nil		
	1	Required (Please specify the desired documents separately.) Submission drawings, instruction manual, inspection procedure, mill sheet, test report (1 pc 1 copy), traceability certificate, attended inspection		

③ Wetted parts materials

Purpose	Socket	Bourdon tube	Connecting
1 General use <small>(Not available for 50MPa or over.)</small>	Pressure range 35MPa or less: CAC203 But BA10 only C3604BD Pressure range 35MPa or over: SUS316 or SCS14	Pressure range 3.5MPa or less: · General type, Vibration-proof type C6872T · Steam use corrosion-proof type, Heat-proof type Steam use · vibration-proof type, Heat-proof · vibration-proof type SUS316 Pressure ranges 3.5MPa or over: SUS316	Soldering for between brass and SUS316 Silver soldering for brass and SUS316 Tig-welding for between SUS316
2 Ammonia use	*SUS316 or SCS14	SUS316	Tig-welding
3 Corrosion-proof use	*SUS316 or SCS14	SUS316	Tig-welding

*SUS316 is BA10 only

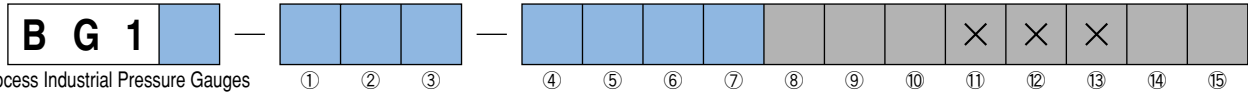
Specify "X" if there is no specification item.

Process Industrial Pressure Gauges

Model number configuration

When ordering, please specify the model number, each spec and range.

Model name



Process Industrial Pressure Gauges
(150 DIA.)

Model number		Selective spec.	Additional spec. (Option)
Model	0	Stem Metal case	
	2	Stem Plastic case	
	5	Panel Metal case	
① Mounting	Stem		Panel
	1	Type A	Type D (Mounting clamp)
	2	Type B (Mounting hole)	Type D (Mounting hole)
② Connection	3	G3/8B	8 R3/8
	4	G1/2B	9 R1/2
	6	1/2NPT	
③ Wetted parts materials	1	General use	Not available for 50MPa or over
	2	Ammonia use	SUS
	3	Corrosion-proof use	SUS
(When ordering, please specify the range and units separately.)	④ Pressure range (MPa)	1	0~40kPa, 0~0.05, 0.06, 0.08
		2	-0.1~0.1, 0.16, 0.2, 0.25, 0.3, 0.4, 0.6, 1, 1.5, 1.6, 2, 2.5
		3	-0.1~0, 0~0.1, 0.16, 0.2, 0.25, 0.3, 0.4, 0.6, 1, 1.5, 1.6, 2, 2.5, 3.5
		4	0~4, 5, 6, 7, 10
		5	0~15, 16, 25, 35
		6	0~40, 50, 60, 70
		7	0~100
⑤ Function	0	Standard	
	A	M: Steam use	
	B	H: Heat-proof type	
	C	V: Vibration-proof type	
	D	MV: Steam use · Vibration-proof type	
	E	HV: Heat-proof · Vibration-proof type	
⑥ Pointer	0	Standard	
	1	Zero adjustable (micro meter type) Not a type-approved product.	
	2	Zero adjustable (spring type) Not a type-approved product.	
	5	Max pointer	
	6	Setting pointer	
⑦ Window	0	Standard	
	2	Tempered glass	
	3	Non-glare treatment glass	
	6	Non-frost coat treatment glass	
⑧ Treatment	0	Nil	
	1	Use no oil	
	2	Use no water	
	3	Use no oil & water	
⑨ Throttle	0	Nil	
	1	FS10-011 or FS10-013 Corrosion-proof use	
	3	FS10-081 (With pipe)	
⑩ Other additional spec.	0	Nil	
	1	Required (Please specify the desired documents separately.) Approved products, Dial scale, Case color Movement, Accuracy 1%	
⑭ Class	J	JIS Accuracy ±1.6%	
	X	Not JIS	
⑮ Documents	0	Nil	
	1	Required (Please specify the desired documents separately.) Submission drawings, instruction manual, inspection procedure, mill sheet, test report (1 pc 1 copy), traceability certificate, attended inspection	

③ Wetted parts materials

Purpose	Soket	Bourdon tube	Connecting
1 General use (Not available for 50MPa or over.)	Pressure range 35MPa or less: CAC203 But BA10 only C3604BD	Pressure range 3.5MPa or less: · General type, Vibration-proof type C6872T · Steam use corrosion-proof type, Heat-proof type	Soldering for between brass and SUS316
	Pressure range 35MPa or over: SUS316 or SCS14	Steam use · vibration-proof type, Heat-proof · vibration-proof type SUS316 Pressure range 3.5MPa or over: SUS316	Tig-welding for between SUS316
2 Ammonia use	* SUS316 or SCS14	SUS316	Tig-welding
3 Corrosion-proof use	* SUS316 or SCS14	SUS316	Tig-welding

* SUS316 is BA10 only

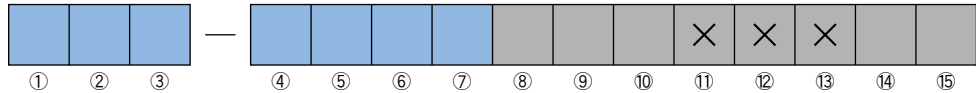
Specify "X" if there is no specification item.

Model number configuration

When ordering, please specify the model number, each spec and range.

Model name

B J 1



Process Industrial Pressure Gauges
(200 DIA.)

Model number		Selective spec.	Additional spec. (Option)
Model	0	Stem	
	5	Panel	
① Mounting	1	Stem	Panel
	2	Type B (Mounting hole)	Type D (Mounting clamp)
			Type D (Mounting hole)
② Connection	4	G1/2B	
	6	1/2NPT	
	9	R1/2	
③ Wetted parts materials	1	General use	Not available for 50MPa or over
	2	Ammonia use	SUS
	3	Corrosion-proof use	SUS
(When ordering, please specify the range and units separately.)	④ Pressure range (MPa)	1	0~40kPa, 0~0.05, 0.06, 0.08
		2	-0.1~0.1, 0.16, 0.2, 0.25, 0.3, 0.4, 0.6, 1, 1.5, 1.6, 2, 2.5
		3	-0.1~0, 0~0.1, 0.16, 0.2, 0.25, 0.3, 0.4, 0.6, 1, 1.5, 1.6, 2, 2.5, 3.5
		4	0~4, 5, 6, 7, 10
		5	0~15, 16, 25, 35
		6	0~40, 50, 60, 70
		7	0~100
⑤ Function	0	Standard	
	A	M: Steam use	
⑥ Pointer	0	Standard	
	1	Zero adjustable (micro meter type)	
	2	Zero adjustable (spring type)	
	5	Max pointer	
	6	Setting pointer	
⑦ Window	0	Standard	
	2	Tempered glass	
	3	Non-glare treatment glass	
⑧ Treatment	0	Nil	
	1	Use no oil	
	2	Use no water	
	3	Use no oil & water	
⑨ Throttle	0	Nil	
	1	FS10-011 or FS10-013 Corrosion-proof use	
	3	FS10-081 (With pipe)	
⑩ Other additional spec.	0	Nil	
	1	Required (Please specify the desired documents separately.) Dial scale, Case color, Movement, Accuracy 1%	
⑭ Class	J	JIS Accuracy ±1.6%	
	X	Not JIS	
⑮ Documents	0	Nil	
	1	Required (Please specify the desired documents separately.) Submission drawings, instruction manual, inspection procedure, mill sheet, test report (1 pc 1 copy), traceability certificate, attended inspection	

③ Wetted parts materials

Purpose	Soket	Bourdon tube	Connecting
1 General use (Not available for 50MPa or over.)	Pressure range 35MPa or less: CAC203 But BA10 only C3604BD Pressure range 35MPa or over: SUS316 or SCS14	Pressure range 3.5MPa or less: • General type, Vibration-proof type C6872T • Steam use corrosion-proof type, Heat-proof type • Steam use · vibration-proof type, Heat-proof · vibration-proof type SUS316 Pressure range 3.5MPa or over: SUS316	Soldering for between brass and SUS316 Silver soldering for brass and SUS316 Tig-welding for between SUS316
2 Ammonia use	* SUS316 or SCS14	SUS316	Tig-welding
3 Corrosion-proof use	* SUS316 or SCS14	SUS316	Tig-welding

*SUS316 is BA10 only

* Size 200 DIA. (BJ10 · BJ15) are not type approved products.

Specify "X" if there is no specification item.

Process Industrial Pressure Gauges

Model number configuration

When ordering, please specify the model number, each spec and range.

Model name

B L 1 — **0 0** × × × ×

Process Industrial Pressure Gauges
(300 DIA.)

① ② ③ ④ ⑤ ⑥ ⑦ ⑧ ⑨ ⑩ ⑪ ⑫ ⑬ ⑭ ⑮

Model number		Selective spec.	Additional spec. (Option)
Model	0 Stem 5 Panel		
① Mounting	1 Type A 2 Type B (Mounting hole)	Stem Type D (Mounting clamp) Type D (Mounting hole)	Panel Type D (Mounting clamp) Type D (Mounting hole)
② Connection	4 G1/2B 9 R1/2		
③ Wetted parts materials	1 General use 2 Ammonia use SUS 3 Corrosion-proof use SUS		
(When ordering, please specify the range and units separately.)	④ Pressure range (MPa)	2 -0.1~0.1, 0.2, 0.3, 0.4, 0.6, 1, 1.5, 2	
		3 -0.1~0, 0~0.1, 0.2, 0.3, 0.4, 0.6, 1, 1.5, 2, 2.5, 3.5	
		4 0~5, 7, 10	
		5 0~15, 25	
		⑤ Function	0 Standard
⑥ Pointer	0 Standard		
	1 Zero adjustable (micro meter type)		
	2 Zero adjustable (spring type)		
⑦ Window	0 Standard		
⑧ Treatment	0 Nil		
	1 Use no oil		
	2 Use no water		
	3 Use no oil & water		
⑨ Throttle	0 Nil		
	1 FS10-011 or FS10-013 Corrosion-proof use		
	3 FS10-081 (With pipe)		
⑩ Other additional spec.	0 Nil		
	1 Required (Please specify the desired documents separately.) Dial scale, Case color, Movement		
⑮ Documents	0 Nil		
	1 Required (Please specify the desired documents separately.) Submission drawings, instruction manual, inspection procedure, mill sheet, test report (1 pc 1 copy), traceability certificate, attended inspection		

③ Wetted parts materials

Purpose	Socket	Bourdon tube	Connecting
1 General use <small>(Not available for 50MPa or over.)</small>	Pressure range 35MPa or less: CAC203 But BA10 only C3604BD Pressure range 35MPa or over: SUS316 or SCS14	Pressure range 3.5MPa or less: • General type, Vibration-proof type C6872T • Steam use corrosion-proof type, Heat-proof type Steam use • vibration-proof type, Heat-proof • vibration-proof type SUS316 Pressure range 3.5MPa or over: SUS316	Soldering for between brass Silver soldering for brass and SUS316 Tig-welding for between SUS316
2 Ammonia use	* SUS316 or SCS14	SUS316	Tig-welding
3 Corrosion-proof use	* SUS316 or SCS14	SUS316	Tig-welding

* SUS316 is BA10 only

* Size 300 DIA. (BL10 · BL15) are not type approved products.

Specify "X" if there is no specification item.

The contents in the catalogue are subject to change without notice.

 **NAGANO KEIKI CO., LTD.**

Gets ISO 9001, ISO 14001, ISO/TS 16949 Certification

HEAD OFFICE & OVERSEAS SALES DEPT : 1-30-4, HIGASHIMAGOME OHTA-KU, TOKYO, JAPAN.
PHONE : +81-3-3776-5328
FAX : +81-3-3776-5447
E-mail : overseas_sales_dept@naganokeiki.co.jp
URL : http://www.naganokeiki.co.jp/

OVERSEAS PLANTS OR AFFILIATES: U.S.A., KOREA, GERMANY, CHINA
OVERSEAS SALES NETWORK: AUSTRALIA, INDONESIA, KOREA, MALAYSIA, PHILIPPINES, SINGAPORE, TAIWAN, THAILAND, U.S.A.

