

Centurion™ C4 Transfer Guide using C4 File Transfer Utility

1.0 Background:

- 1.1 A valid configuration is required for the Centurion™ system. Configuration files are downloaded to the system using the C4 File Transfer Utility.
- 1.2 Configuration files may be uploaded from an existing Centurion system for archiving, or copying a controller setup into another system.
- 1.3 In the event a firmware updates are released by FW Murphy, these updates can also be installed by the user, using the C4 File Transfer Utility.
- 1.4 The files are transferred to the components using through a USB connection from a PC to the specified component.
- 1.5 The C4 File Transfer Utility software must be installed on the PC. Access the license agreement and installation from the web link below.
<http://www.fwmurphy.com/software/>
- 1.6 The USB Drivers for FW Murphy devices must be installed on the PC. If these have not been installed on the PC, Visit the website link
<http://www.fwmurphy.com/software/>
 - 1.6.1 Click the link on the page below and print this document for instructions on installing the USB driver.

[USB Driver Installation Guide - updated 01/2010 \(.pdf\)](#)

- 1.6.2 Click on the link on the page shown below.

[USB Drivers for Windows2000/XP/Server 2003/Vista \(v5.4.24 file size: 3.04 MB; updated 01/2010\)](#)
[USB Drivers for Windows 7 \(v5.4.24 file size: 2.64 MB; updatd 01/2010\)](#)

- 1.6.3 Use the USB Driver Installation Guide to install the software, and determine the COM port assignment for the Centurion™ controller on your PC. Remember this number for future firmware transfers.

2.0 **Downloading/Uploading Configuration to Centurion C4 System**

2.1 Connect the PC to the Centurion Core C4-1 mounted inside the panel using a standard Type A to Type B USB cable.



2.2 With the USB cable connected between the PC and the Core C4-1, cycle power to the Core OFF and back to ON.

2.3 The Core C4-1 is now ready to receive the download from the PC.

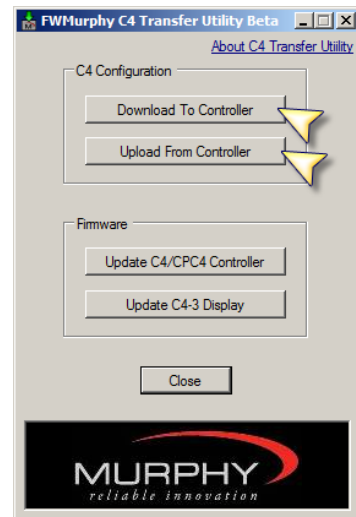
2.4 Run the C4 File Transfer software by clicking the Icon on the desktop.



2.5 A popup window will appear...Choose the desired option

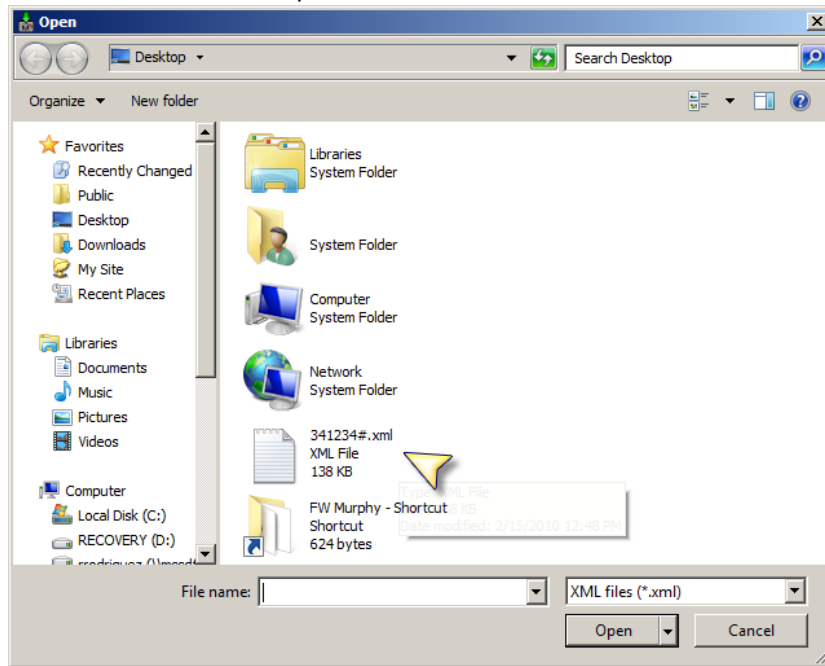
2.5.1 Downloading sends the configuration to the controller from the PC.

2.5.2 Uploading receives the configuration from the controller and allows saving on the PC.

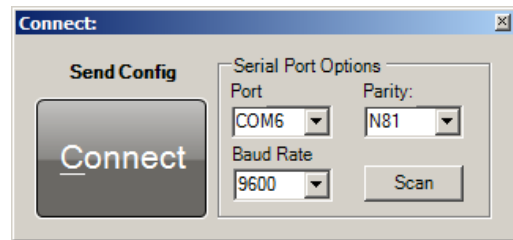


2.6 If Download is selected...

2.6.1 Browse to the XML file that is stored on the PC and double click it. In the example below, it is stored on the desktop.

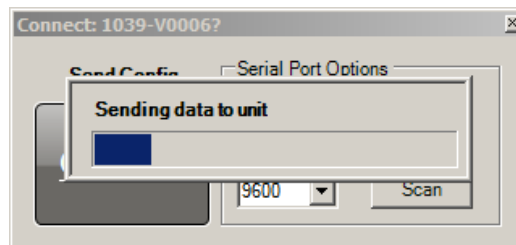


2.7 If Upload is selected or if complete with XML download selection. The Connect window appears. If unsure about these settings, click the SCAN button to scan the PC comm. ports for the correct Port number and baud rate settings*. Click CONNECT to proceed.

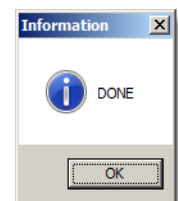


*If the SCAN button fails to detect the port number, pick the COM port assignment determined by the USB to Serial Bridge manually. **Refer to USB Driver Installation section 1.6 for instructions on determining the correct COM assignment for the PC.**

2.8 The next window will appear to begin the transfer process.



2.9 When the transfer operation is complete, the software will display DONE. Click OK to exit the window and complete the process.



2.10 Remove the USB cable connected between the PC and the Core C4-1, then cycle power to the Core C4-1 and Display C4-3 OFF and back to ON to complete the process. The Display C4-3 will automatically synchronize with the Core C4-1 after power is restored.

3.0 **Downloading Centurion™ Core firmware (C4-1)**

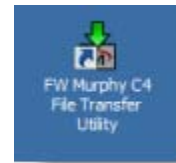
3.1 NOTE: This step is only required if updated firmware is available for your controller. The configuration file must be downloaded **after** this step.

3.2 Connect the PC to the Centurion™ Core mounted inside the panel using a standard Type A to Type B USB cable.



3.3 Cycle power to the controller OFF and back to ON.

3.4 The Core is now ready to receive the download from the PC.

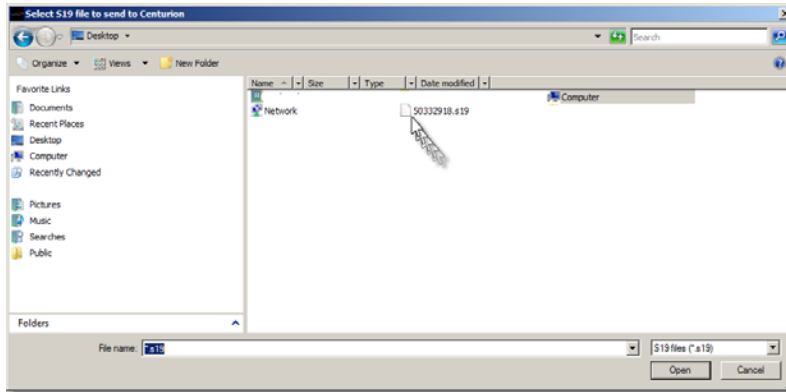


3.5 Run the C4 File Transfer Utility software by clicking the Icon on the desktop.

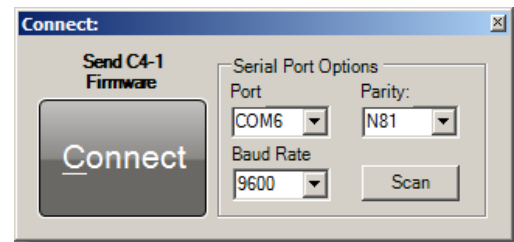
3.6 A popup window will appear...Click Transfer menu, then Click on Update C4/CPC4 Controller Firmware.



- 3.7 A new window will appear that allow navigation to the location of the Core C4-1 firmware file supplied by FW Murphy, and click OPEN. In the example below, the S19 firmware file is located on the Desktop. Double Click the S19 file.

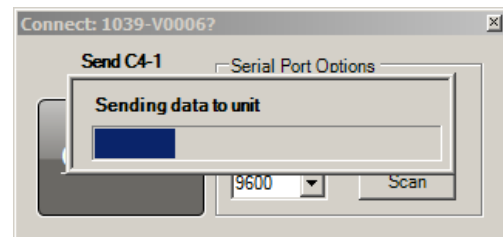


- 3.8 The Connect window appears. If unsure about these settings, click the SCAN button to scan the PC comm. ports for the correct Port number and baud rate settings*. Click CONNECT to proceed.

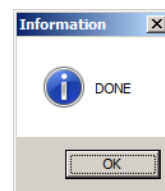


*If the SCAN button fails to detect the port number, pick the COM port assignment determined by the USB to Serial Bridge manually. **Refer to USB Driver Installation section 1.5 for instructions on determining the correct COM assignment for the PC.**

- 3.9 The next window will appear to begin the transfer process.



- 3.10 When the transfer operation is complete, the software will display DONE. Click OK to exit the window and complete the process.

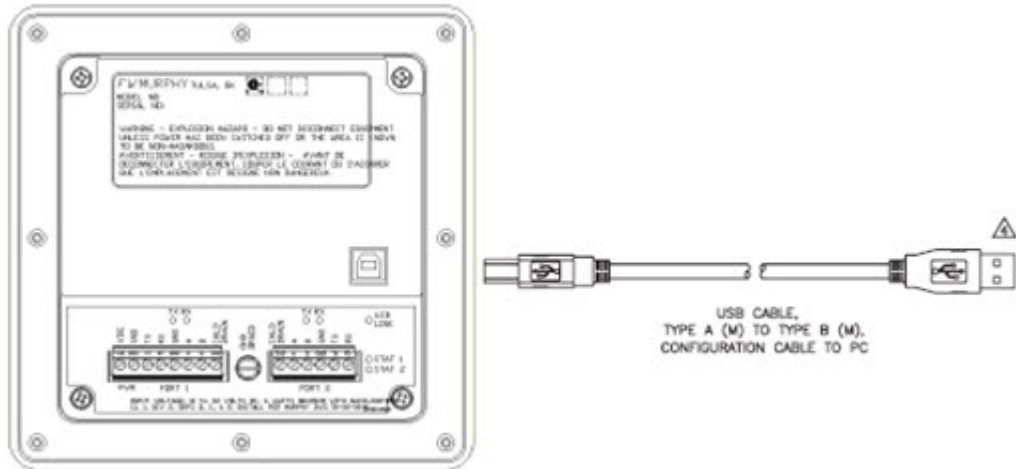


- 3.11 Remove the USB cable connected between the PC and the Core C4-1, then cycle power to the C4-1 OFF and back to ON to complete the firmware update process.
- 3.12 **IMPORTANT:** After installing the firmware and re-downloading the configuration, a factory default command must be performed using the Centurion Display. To access this page, login to the display using the Superuser password configured for the system. Then use the RIGHT ARROW key to gain access to the SUPERUSER menu. Toggle the “RESTORE FACTORY DEFAULTS” setting to yes. After this is complete, wait 30 seconds and then cycle the power off and back on to the system.
- 3.12.1 **NOTE:** If the display is not used, or failed to synchronize properly after the firmware update, a “restore factory defaults” command can also be performed through Modbus RTU commands by momentarily writing a “12” decimal to register 40001.
- 3.12.2 **NOTE:** In rare cases, the serial port settings are not set properly after a firmware update. To correct this, re-save your Configuration (Click File, then select Save), and then re-download the Configuration. This forces the serial port settings to restore to the configuration settings.

4.0 Updating C4-3 Core Firmware

4.1 NOTE: This step is only required if updated firmware is available for the Centurion Display C4-3.

4.2 Connect the PC to the Display C4-3 using a standard Type A to Type B USB cable.

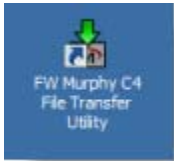


4.3 Turn power off and back on to the Display C4-3. The display will read "BOOTLOADER STARTED".

4.4 ***The remaining steps are identical to the Core firmware download process. Only chose the SREC file types at the Transfer menu step 3.6. Repeat steps 3.7-3.9 to update the Display C4-3 firmware.***

4.5 Remove USB cable from the back of the Display C4-3, and cycle the power to reboot the Display C4-3 with the new firmware file.

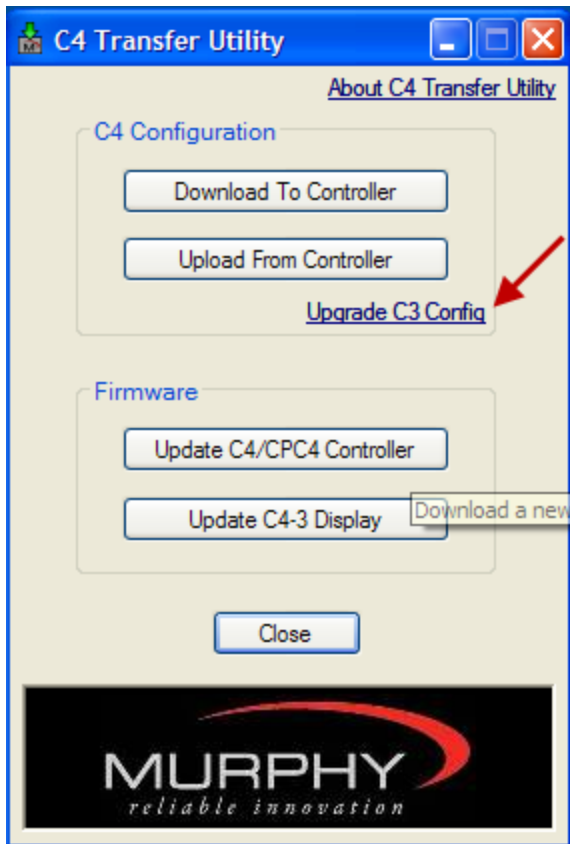
5.0 C3 to C4 Configuration File Conversion



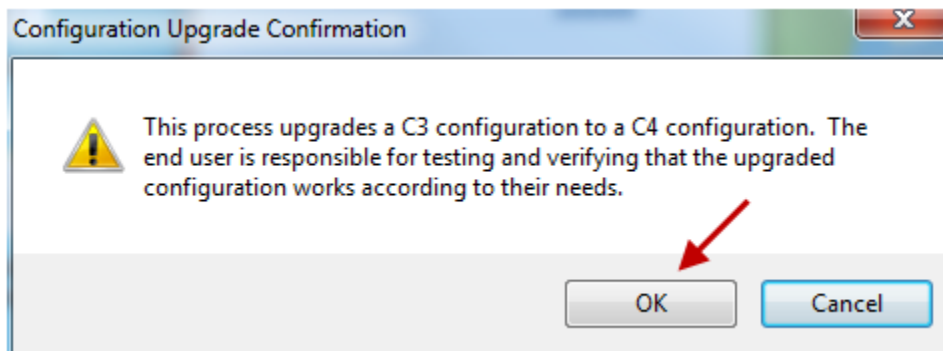
5.1 Run the C4 File Transfer Utility software by clicking the Icon on PC desktop.

5.2 A popup window will appear...Choose the desired option

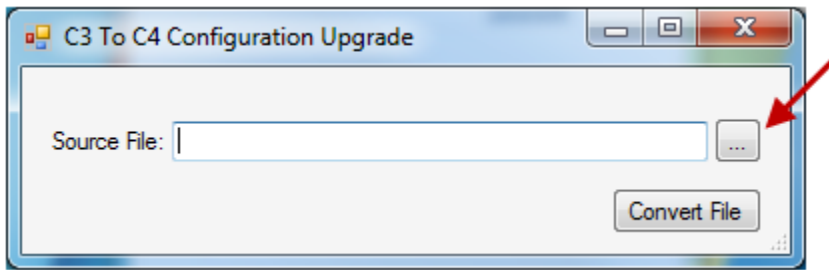
5.2.1 Upgrade C3 Configuration



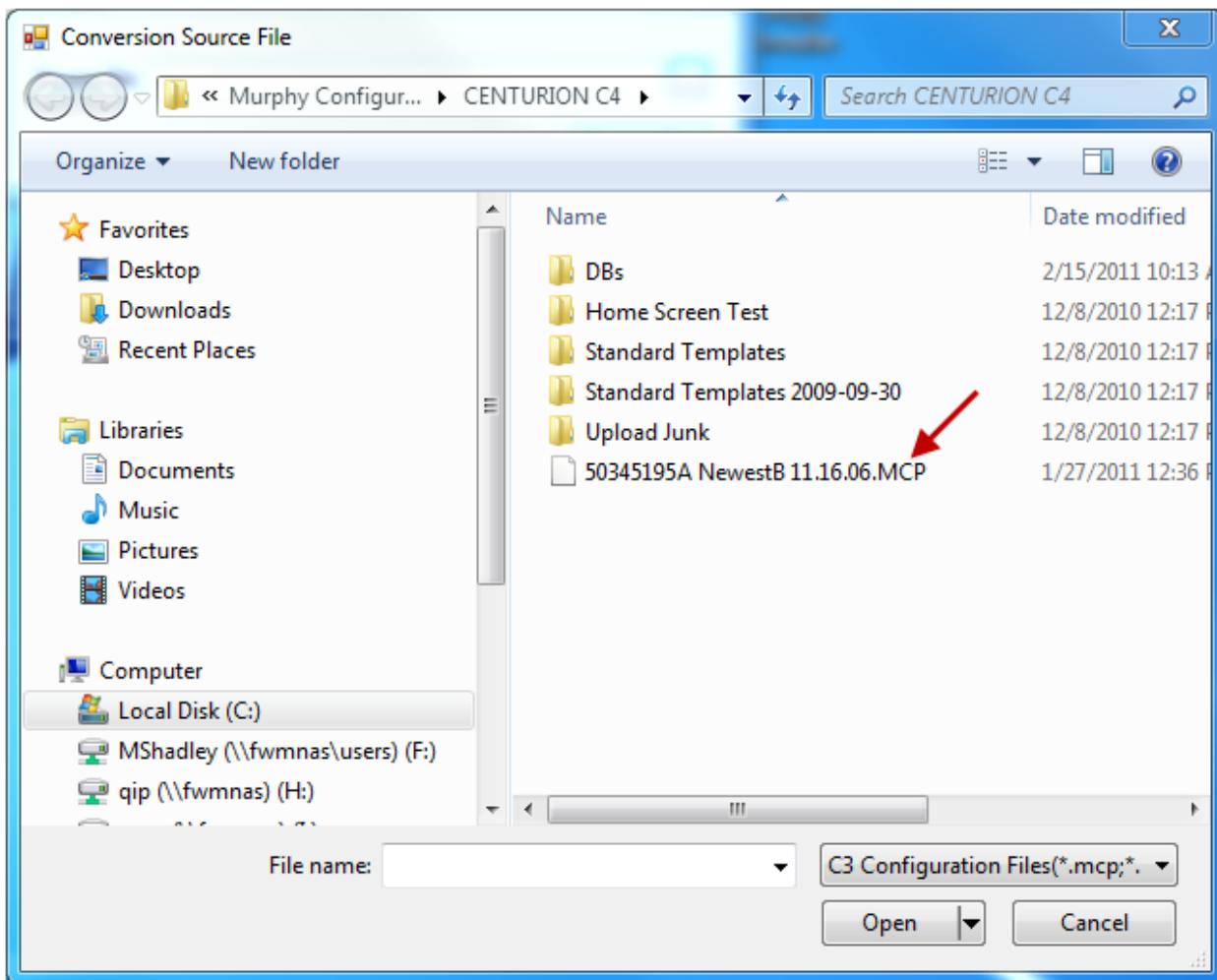
5.3 Clicking the link will bring up a notification screen that tells user what task the software is going to perform. Notification also indicates it is the responsibility of the user to verify all tasks have been accurately converted.



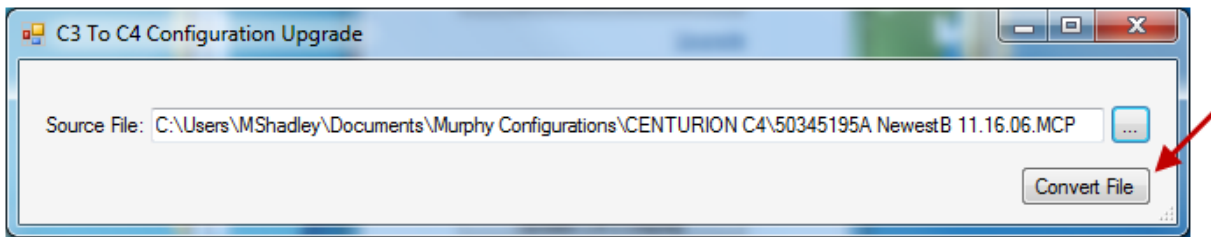
- 5.4 Clicking OK brings up the Upgrade form that was the starting point for the stand-alone converter when it was under development.



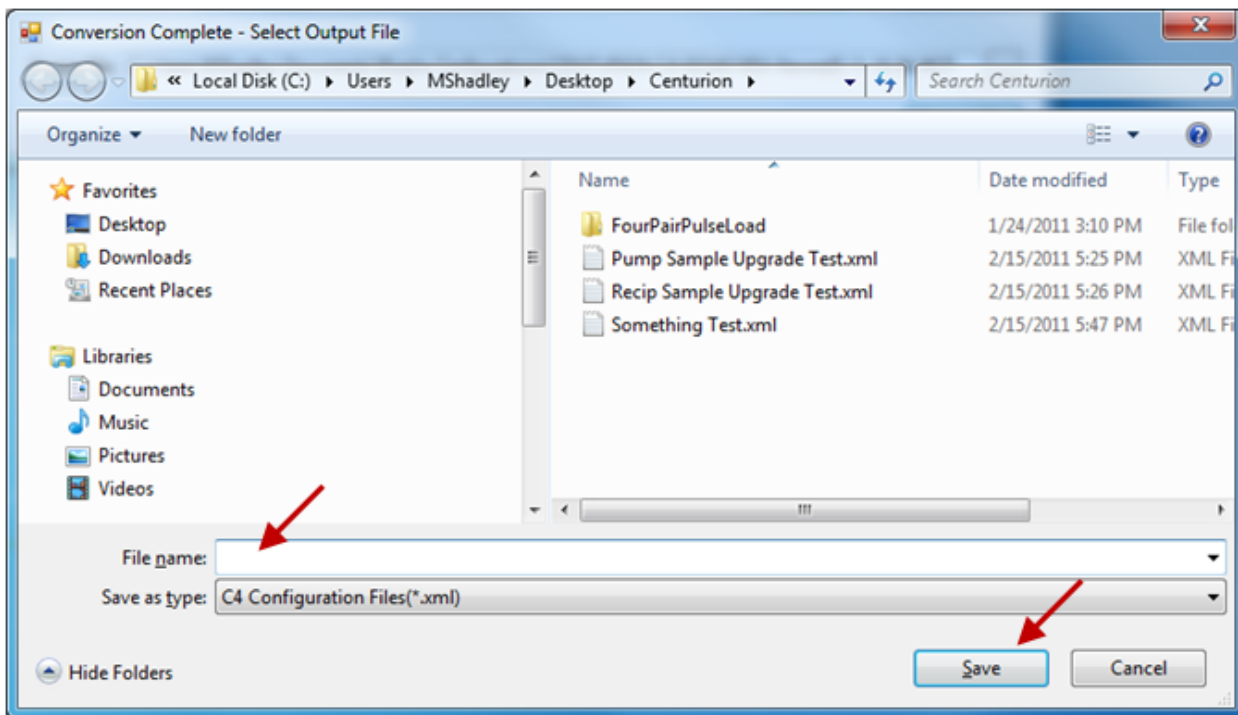
- 5.5 Clicking the ellipsis button brings up a File Open dialog box where the user can browse for a C3 configuration file.



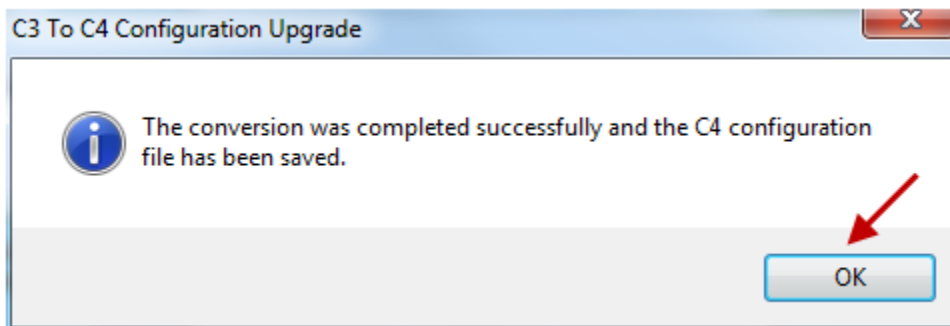
- 5.6 User will browse computer for .MCP file to be converted. By clicking the .MCP file the user wants to convert, a pop up dialog box will appear with the name and location of file to be converted.



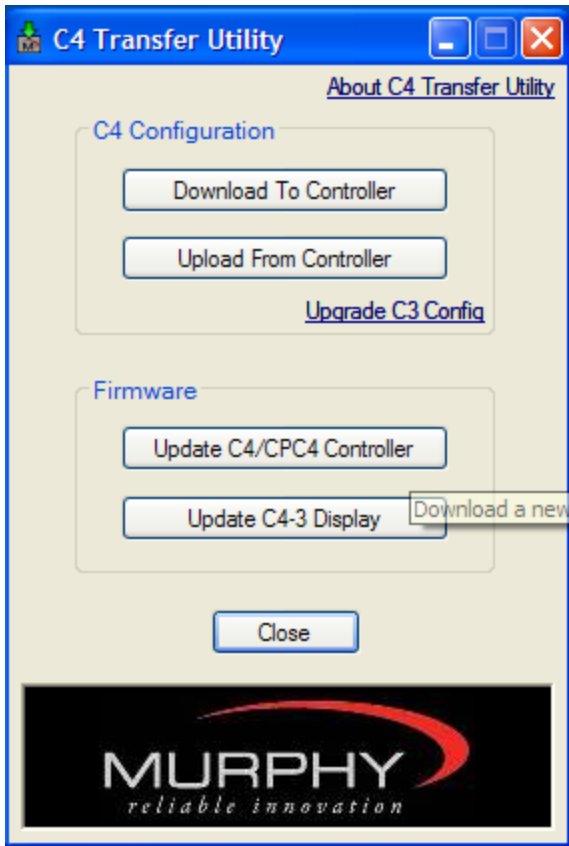
- 5.7 Clicking Convert File reads in the source file and converts the .MCP file to a .XML file. When conversion is successful, the user is presented with a File Save dialog box to save the resulting C4 configuration file.



- 5.8 User will give new C4 file conversion a name and click Save.



- 5.9 The user will see a confirmation message indicating file conversion is complete. Click OK and software returns to the main C4 File Transfer Utility main screen.



In order to consistently bring you the highest quality, full featured products, we reserve the right to change our specifications and designs at any time. MURPHY products and the Murphy logo are registered and/or common law trademarks of Murphy Industries, LLC. This document, including textual matter and illustrations, is copyright protected by Murphy Industries, LLC, with all rights reserved. (c) 2010 Murphy Industries, LLC.

FW MURPHY

P.O. Box 470248
Tulsa, Oklahoma 74147 USA
Phone: +1 918 317 4100 Fax: +1 918 317 4266
E-mail: sales@fwmurphy.com

INDUSTRIAL PANEL DIVISION

Fax: +1 918 317 4124
E-mail: ipdsales@fwmurphy.com

MURPHY POWER IGNITION

Web site: www.murphy-pi.com

CONTROL SYSTEMS & SERVICES DIVISION

P.O. Box 1819
Rosenberg, Texas 77471 USA
Phone: +1 281 633 4500 Fax: +1 281 633 4588
E-mail: css-solutions@fwmurphy.com

FRANK W. MURPHY LTD.

Church Road, Laverstock
Salisbury, SP1 1QZ, UK
Phone: +44 1722 410055 Fax: +44 1722 410088
E-mail: sales@fwmurphy.co.uk
Web site: www.fwmurphy.co.uk

COMPUTRONIC CONTROLS

41 - 46 Railway Terrace
Nechells, Birmingham, B7 5NG, UK
E-mail: sales@computroniccontrols.com
Web site: www.computroniccontrols.com

www.fwmurphy.com

FW MURPHY INSTRUMENTS (HANGZHOU) CO., LTD.

77 23rd Street
Hangzhou Economic & Technological Development Area
Hangzhou, Zhejiang, 310018, China
Phone: +86 571 8788 6060 Fax: +86 571 8684 8878
E-mail: apsales@fwmurphy.com



USA-ISO 9001:2008 FM 28221
UK-ISO 9001:2008 FM 29422
CHINA-ISO 9001:2008 FM 523851
Registered Facilities



Printed in U. S. A.

02/11/2011