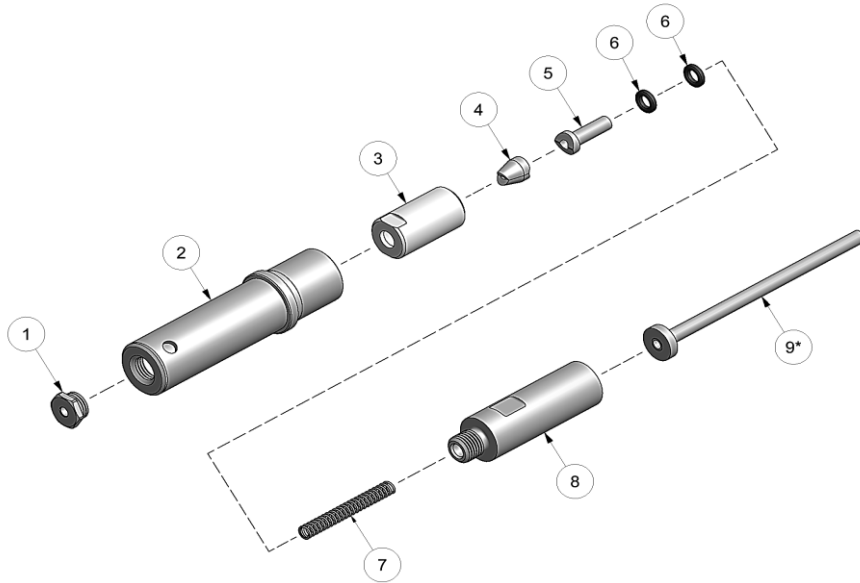
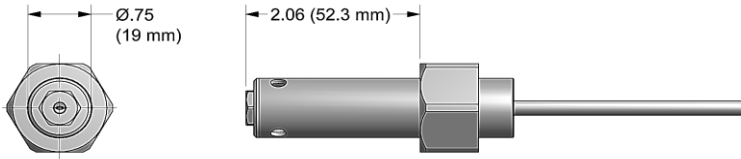


NOSE ASSEMBLY DATA SHEET



ASSEMBLY:

Note: If nose assy is assembled as it is when purchased new, follow steps 5-7 to attach to tool.

1. Insert pintail tube (9) into i.d. of piston on tool.
2. Drop chuck jaws (4) into rear of collet (3). (Note position of jaws in exploded view).
3. Slide o-rings (6) over follower and push flush with o.d. Drop follower (5) into rear of collet (3) and onto rear of chuck jaws (4). (Note position in exploded view).
4. Thread collet (3) to extension-collet (8). Snug with 9/16" wrench to extension-collet (8) using flats. Drop spring (7) into rear of extension-collet (8).
5. Insert pintail tube (9) into i.d. of piston on tool. (Note position in exploded view). Thread assembled parts to piston. Snug with 9/16" wrench using flats of collet (3) and hex key into rear of piston of tool.
6. Slide anvil & holder assy (1) over assembled parts attached to piston on tool.
7. Slide retaining nut from tool onto anvil & holder assy (2) and tighten nose assy to tool.

DISASSEMBLY:

Reverse assembly instructions.

1/08 Rev. 5/16



*Remove for -6 NAS1919/21S & U.

GAGE BILT
MADE IN U.S.A.

GAGE BILT Inc.
44766 Centre Court +1 (586) 226-1500
Clinton Twp., MI 48038 +1 (586) 226-1505 Fax
e-mail:solutions@gagebilt.com / www.gagebilt.com

Type:		Fastener:	Recommended Tool:
Non Self-Releasing 1/8", 5/32" & 3/16" Ø		NAS1919S & U & NAS1921S & U WITH DRIVE WASHER	GB752
			Alternate Tools: GB751 & GB2480(A)
Ref. No.	Qty.	Description	456UBR-751A-21
1	1	Nose Tip	10206-1
2	1	Anvil-Holder Assy	10942-4
3	1	Collet	70105
4	1	Jaw Set	30513
5	1	Follower	40506-1
6	2	O'Ring	400774
7	1	Spring	50316
8	1	Extension-Collet	70466
9*	1	Pintail Tube	40446