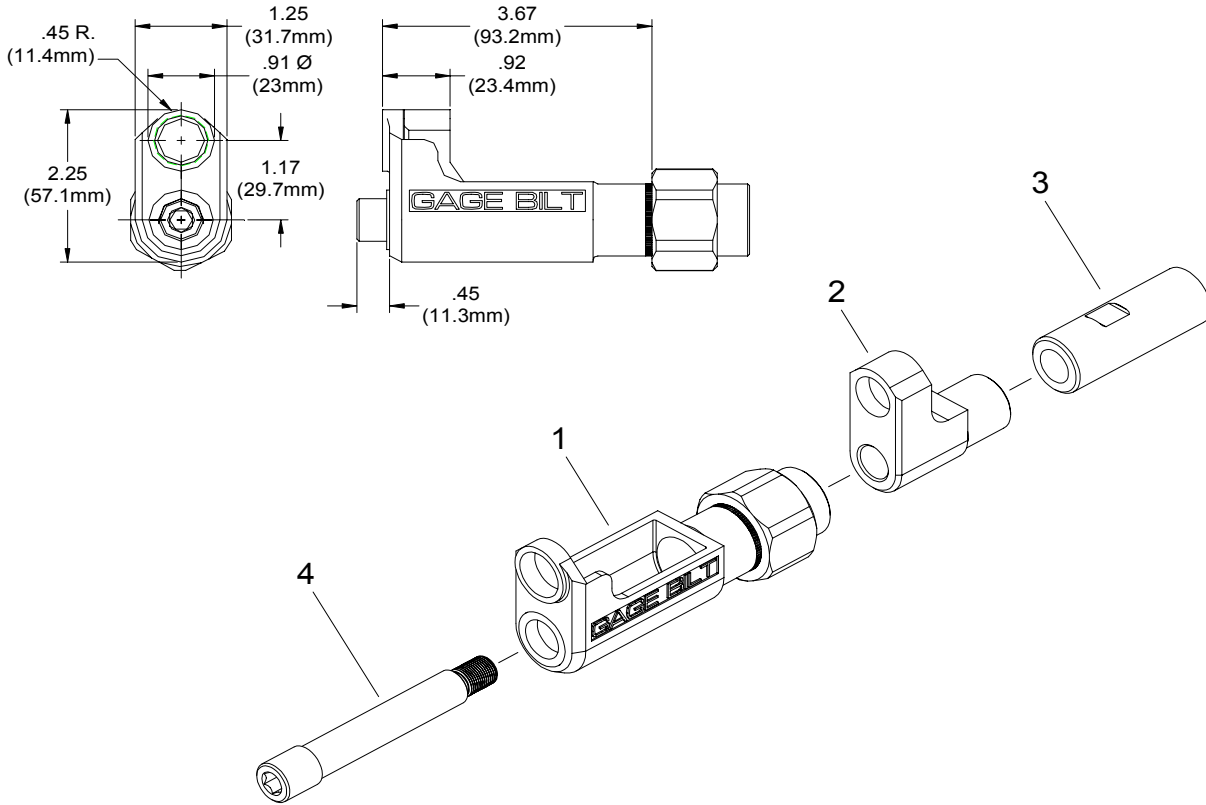


353209 ADAPTER DATA SHEET



Assembly Instructions:

1. Insert collet (2) and collet adapter (3) inside anvil assembly (1).
2. Slide drawbar (4) thru front of anvil assembly (1), collet (2) and thread into collet adapter (3) until sit stops.
3. Tighten securely using hex on front of drawbar (4) and flats on collet adapter (3).
4. Insert assembled adapter assembly into nose fitting of installation tool and tighten securely onto piston using hex on front of drawbar (4) and hex in rear of piston. Tighten nut on anvil assembly securely onto nose fitting of installation tool.



8/11

GAGE BILT

GAGE BILT Inc.

44766 Centre Court (586) 226-1500
 Clinton Twp., MI 48038 (586) 226-1505 Fax
 e-mail: solutions@gagebilt.com / www.gagebilt.com

Type:		Adapts 209 series nose assemblies to: GB745, GBP4801B and GB2580 installation tools	
Rotatable Nose Assembly Adapter			
Ref. No.	Qty.	Description	353209
1	1	Anvil Assembly	353210
2	1	Collet	353211
3	1	Collet Adapter	353213
4	1	Drawbar	353212