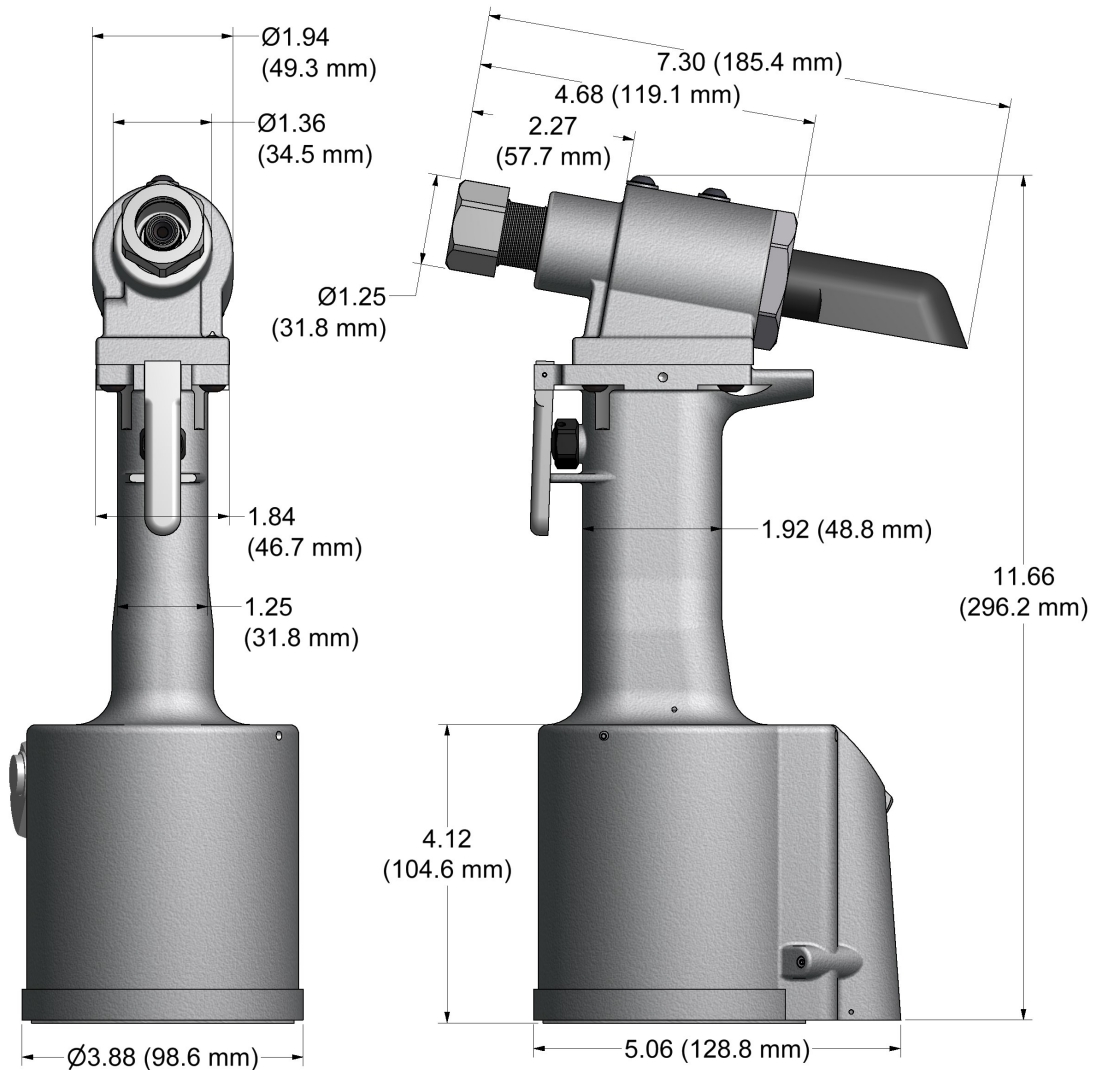


GB730

INSTALLATION TOOL SERIES



DESCRIPTION

Covered under Patent No. 5,485,727

The GB730 is a pneumatic-hydraulic tool designed specifically for the efficient installation of a wide range of blind rivets and lockbolts. It weighs just under 4.7 lbs. (2.13 kg) and can be operated in any position with one hand. It has a .500" (12.7 mm) rivet setting stroke and a rated pull load of 4,000 lbs (17.79 kN) on 90 psi (6.2 bar) air pressure at the air inlet.

The GB730 riveter operates on 90 to 100 psi (6.2-6.9 bar) of air pressure, with 90 psi (6.2 bar) providing the maximum efficiency. At 90 psi. (6.2 bar) of air pressure, the GB730 does not exceed 81.5 dB(A) and consumes 3.9 cfm at 20 cycles per minute.

The air inlet is provided with 1/4-18 female pipe thread for accepting the user's air hose fitting.

NOSE ASSEMBLIES ARE NOT FURNISHED WITH THIS RIVETER AND MUST BE ORDERED SEPARATELY.

GAGE BILT
 **MADE in USA**

44766 Centre Court Clinton Twp. MI 48038 USA
Ph: +1 (586) 226-1500 Fax: +1 (586) 226-1505
solutions@gagebilt.com / www.gagebilt.com



GB730-NOSE ASSEMBLY SELECTION CHART & ACCESSORIES



ACCESSORIES (SOLD SEPARATELY)

NOSE ASSEMBLIES (SOLD SEPARATELY)

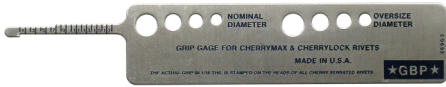
CATCHER BAG

#704214 (Equivalent to #670A20)



GRIP GAGES

Grip Gage for CHERRYMAX® and CHERRYLOCK® rivets (PART# 269G3)



Grip Gage NAS Lockbolts and blind fasteners (Part # GB105093)

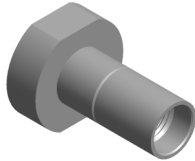


730157 Stroke Limiter

Required with -54 right angle nose assy's when used on GB730 tool. See Chart.



730703 Stroke Setting Gage

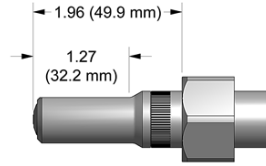


Riveter Kits

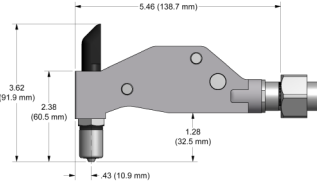
Gage Bilt offers a wide selection of standard and custom kits tailored to your needs. Contact us for more information.



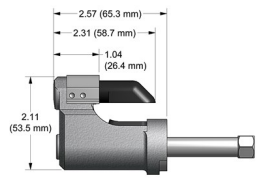
STRAIGHT



*RIGHT ANGLE



*OFFSET



FASTENER	DIA.	STRAIGHT	RIGHT ANGLE 1	OFFSET	
'A' CODE NAS1398 & NAS1399 'A'	3/32 1/8 5/32 3/16 1/4	3A-352B-25 4A-752C-20 5A-752C-20 6A-752B-20 SMLS08-713-20	4A-752C-45 5A-752C-45 6A-752B-45	3A-751B-54RA 4A-751B-54RA 5A-751B-54RA 6A-751B-54RA	4A-752A-43OS 5A-752A-43OS 6A-752A-43OS SMLS08-752A-43OS 2
ASP® 2 ASP & ASP PF ASP FF & ASP F ASP-LC & MA F	13/64 17/64	ASP06-752B-20 ASP08-752B-20	ASP06-752B-45 ASP08-752B-45	ASP06-751B-54RA ASP08-751B-54RA	ASP06-752A-43OS ASP08-752A-43OS
COMMERCIAL LOCKBOLTS C6L® AVDELOK®	3/16 1/4	LB06-722-20 LB08-722-20			NAS06-204C-25OS NAS08-204C-25OS NAS06-204C-34OS NAS08-204C-34OS
LGP® LOCKBOLT	5/32	LGP05-2480-10 LGP05-2480-45	LGP05-2480-20		LGP05-204C-25OS LGP05-204C-34OS
LGPL2SC-V LGPL18SC-V LGPL4SC-V LGP2SP-V LGPL4SP-V LGPL8SC-V LGPL9SC-V LGPL9SP-V	3/16 7/32	BACB30VM BACB30XT ABS0548 BACB30VN ASNA2392 BACB30WD BACB30WB BACB30VY	LGP06-2480-10 LGP06-2480-45 LGP07-731-10 LGP07-731-45	LGP06-2480-20 LGP07-731-20	LGP06-204C-25OS LGP06-204C-30OS LGP06-204C-34OS LGP07-204C-30OS LGP07-204C-34OS
NAS and GP® SHEAR/TENSION LOCKBOLTS	5/32 3/16	NASS05-2480-10 NASS05-2480-20 NASS05-2480-45 NAS06-2480-10 NAS06-2480-45	NAST05-2480-10 NAST05-2480-20 NAST05-2480-45 NAS06-2480-20		NASS05-204C-25O NASS05-204C-30O NASS05-204C-34O NAS06-204C-25OS NAS06-204C-34OS NAST05-204C-20O NAST05-204C-30O NAST05-204C-34O NAS06-204C-30OS
BACB30GW					
CHERRYMAX®, CHERRYMAX® 'AB', MBC® LOCK CREATOR BACR15FR/FP, BACR15GF/GK, NAS1900 S & U SERIES BLIND RIVET WITH DRIVE WASHER	1/8 5/32 3/16 1/4	456MAX-751-23 2 08MAX-752B-20	456MAX-751A-61 2 08MAX-752B-45	456MAX-751D-54RA 2 08MAX-713A-58RA	456MAX-731-43OS 2 08MAX-204D-27OS 08MAX-204D-37OS
BLIND BOLT (SINGLE ACTION) WITH OR W/O DRIVE WASHER MS90353S & U / MS90354S & U MS21140S & U / MS21141S & U MAX-BOLT®, BACB30Y, YU, & YT	1/8 5/32 3/16	SMLS04-752C-20 SB05-752C-20 SB05-752C-80	SMLS04-752C-45 SB05-752C-45 SB06-752B-20 SB06-752B-45 SB06-752B-80	SB05-751B-54RA SB06-751B-54RA	SB05-752A-43OS SB06-204D-27OS
EN6122 & UAB130-EU EN6127 & UAB6127-EU EN6128 & UAB100-EU EN6129 & UABP-EU	1/8 5/32 3/16 1/4	UAB568-713-21 4	UAB568-713-61 4	UAB04-751B-54RA UBB06-751B-54RA	UAB04-752A-43OS UBB06-752A-43OS
BLIND RIVET (SINGLE ACTION) WITH OR W/O DRIVE WASHER NAS1900 S & U SERIES	1/8 5/32 3/16 1/4	SMLS04-752C-20 SMLS05-752C-20 SMLS06-752B-20 SMLS08-713-20	SMLS04-752C-45 SMLS05-752C-45 SMLS06-752B-45	SMLS04-751B-54RA SMLS05-751B-54RA SMLS06-751B-54RA SMLS08-713A-58RA	SMLS04-752A-43OS SMLS05-752A-43OS SMLS06-752A-43OS SMLS08-752A-43OS 2

ASP®, GP®, C6L® AND LGP® ARE REGISTERED TRADEMARKS OF ALCOA INC. AVDELOK® IS A REGISTERED TRADEMARK OF AVDEL UK LIMITED. CHERRYMAX®, MAXI-BOLT®, AND MBC® ARE REGISTERED TRADEMARKS OF CHERRY AEROSPACE FASTENERS.

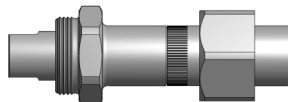
GAGE BILT CERTIFIES THE GB730 WILL INSTALL THE ABOVE FASTENERS.

*ALL RIGHT ANGLE NOSES REQUIRE 730157 STROKE LIMITER EXCEPT 58RA.	PLEASE NOTE: Due to lever assembly length, the GB730SR Tools require -45 min. nose length for all straight noses.
*ALL OFFSET 204 SERIES NOSES REQUIRE 751204 ADAPTER.	
1) RIGHT ANGLE NOSE ASSEMBLY'S MAY REQUIRE MORE THAN ONE PULL.	
2) INSTALLS 1/8, 5/32 & 3/16 DIAMETERS	
3) ALUMINUM ONLY	
4) INSTALLS 5/32, 3/16, & 1/4 DIAMETERS	

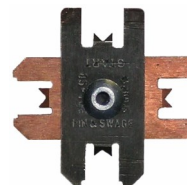
NOTE: THE LAST 2 DIGITS OF THE NOSE ASSEMBLY REPRESENTS THE LENGTH THE NOSE EXTENDS FROM THE TOOL. I.E. -20 = 2.0 INCHES

751204 Adapter Assy

Adapts 204 offset series nose assemblies to GB730 installation tool.



Other adapters available. Contact Gage Bilt for more information.



Gage Bilt also supplies pin & collar swage inspection gages to certify swage installation.

