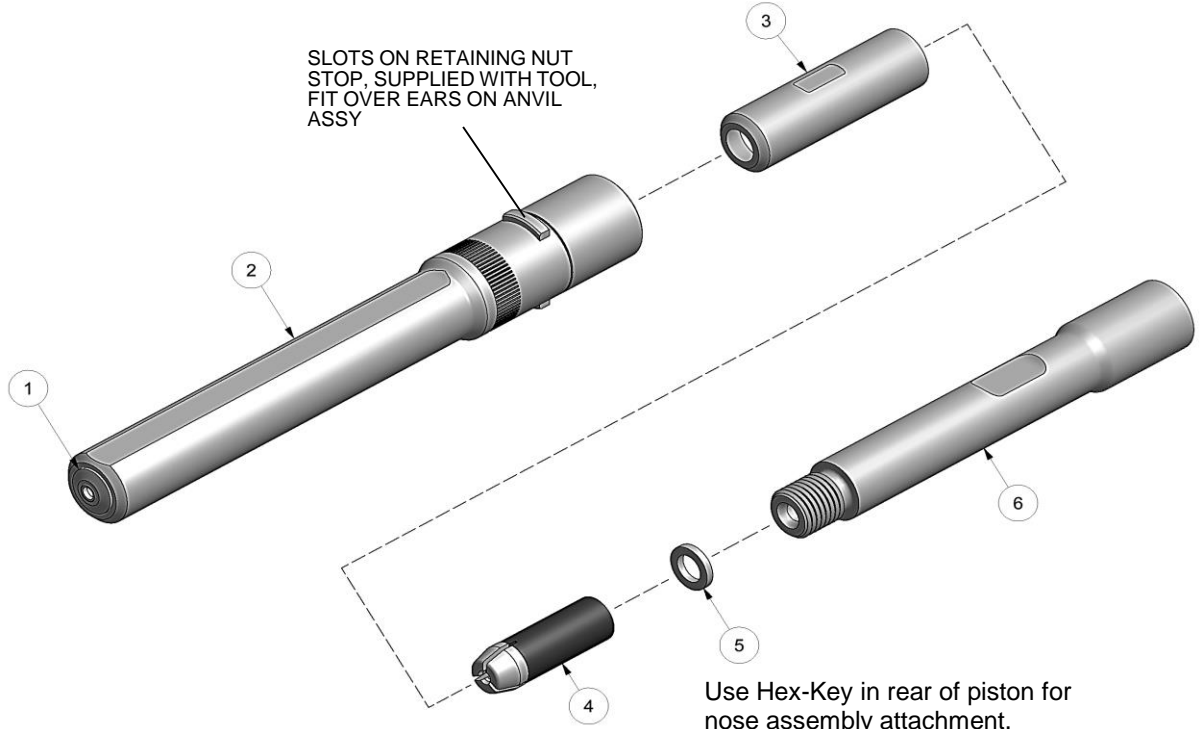
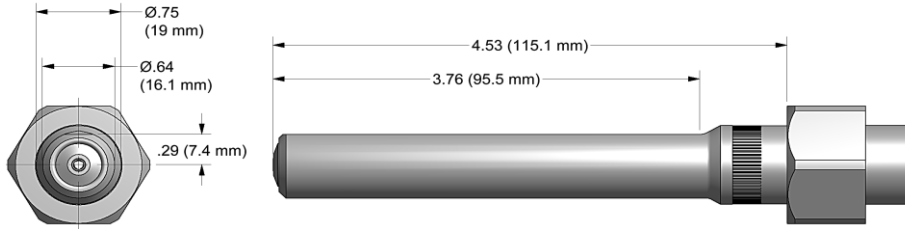


NOSE ASSEMBLY DATA SHEET



**Anvil Assembly consists of #1 and 35208 retainer.

1/12 REV 12/15

GAGE BILT
MADE IN U.S.A.

GAGE BILT Inc.
44766 Centre Court (586) 226-1500
Clinton Twp., MI 48038 (586) 226-1505 Fax
e-mail:solutions@gagebilt.com / www.gagebilt.com

Type:		Fastener:	Recommended Tool: GB752
Non Self-Releasing *1/8" Ø		NAS1398A/1399A RV1000/1100 & 1200 *5/32 Ø AF5075 / AF5076 / S149A020	Alternate Tools: GB751 & GB2480(A)
Ref. No.	Qty.	Description	4A-752C-45
1	1	Anvil-Driving	10488
2	1	Anvil & Holder Assy (Inc. #1)	17763
3	1	Collet	20727
4	1	Super-Grip Jaw Assy	30425-CS
5	1	Spacer	70572
6	1	Collet Extension	70551