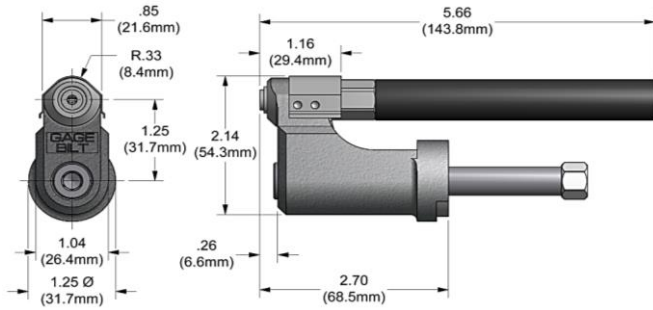
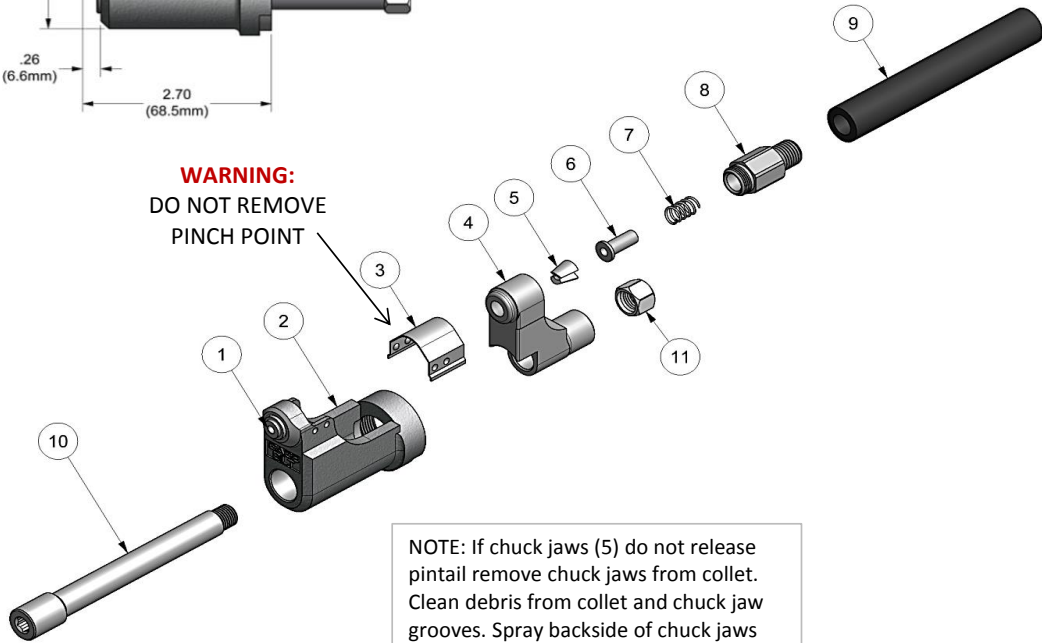


NOSE ASSEMBLY DATA SHEET



CAUTION:
Pintail may eject forcibly. USE DEFLECTOR TO PREVENT SEVERE PERSONAL INJURY.



NOTE: If chuck jaws (5) do not release pintail remove chuck jaws from collet. Clean debris from collet and chuck jaw grooves. Spray backside of chuck jaws with release agent part # A-1493.

ASSEMBLY INSTRUCTIONS:

Disconnect tool from power source. On front of GB204 Installation tool, remove screw and stop. With collet placed in anvil install on tool. Apply Vibra-TITE® part no. 405124 to threads on drawbar. Slide drawbar thru anvil and collet. Screw nut "counterbore in" on rear of drawbar. Connect tool to power source. Cycle the tool to rear position. While holding the trigger down, disconnect tool from power source. Using a 1/4" hex wrench and a 1/2" socket wrench, tighten nut on the drawbar. Replace screw and stop on tool.



3/14 REV 4/14

*Use Adapter No. 751204.

GAGE BILT
MADE IN U.S.A.

GAGE BILT Inc.
44766 Centre Court (586) 226-1500
Clinton Twp. MI 48038 (586) 226-1505 Fax
e-mail:solutions@gagebilt.com / www.gagebilt.com

Type:		Fasteners:	Recommended Tool:
Self-Releasing 3/16" Ø		OPEN END NAIL RIVET	GB204
			Alternate Tools: *GB722 & *GB752
Ref. No.	Qty.	Description	6N 204-270S
1	1	Anvil Insert	16703
2	1	Anvil & Holder Assembly (Inc #1)	12319
3	1	Guard	60426
4	1	Collet	20716
5	1	Chuck Jaw Set	30824-1
6	1	Follower	40324
7	1	Spring	A-1520
8	1	Cap-Vacuum	70485
9	1	Tube	40685
10	1	Draw Bar	71116
11	1	Nut	71114