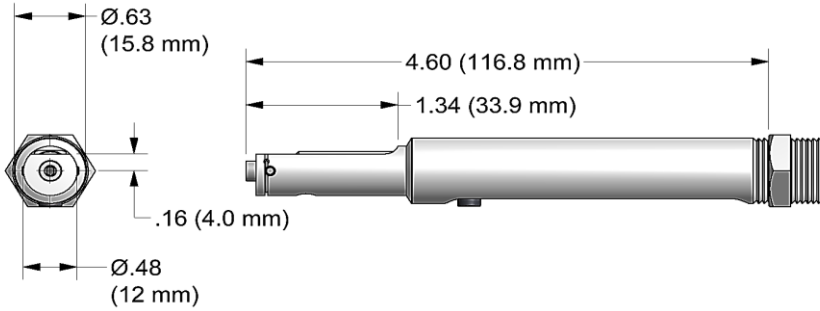


NOSE ASSEMBLY DATA SHEET



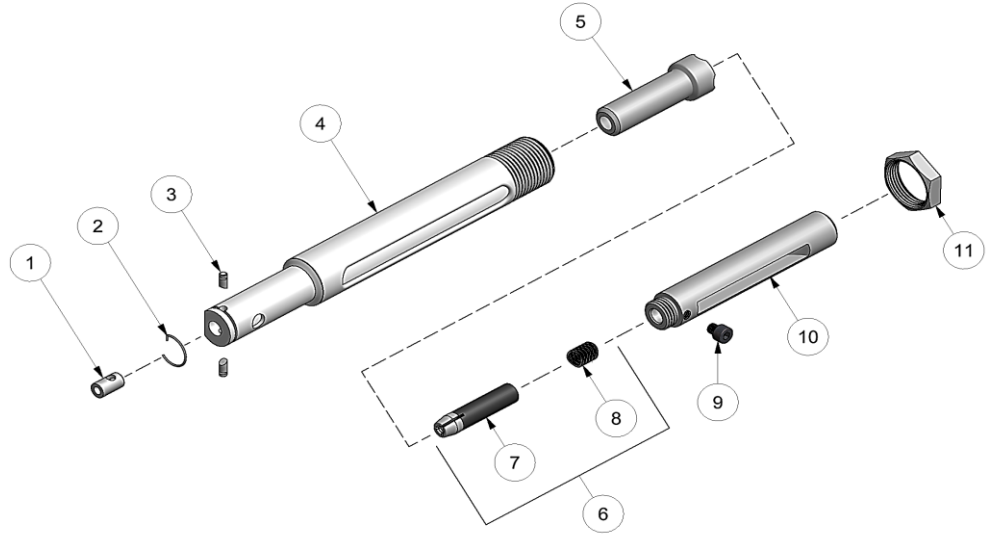
**POINT NOSE ASSEMBY DOWN
WHEN ATTACHING TO TOOL**



Effective FOD Control (foreign object damage/debris). Install catcher bag on the front of the riveter to catch spent pintail stems. Place nose assembly through grommet on catcher bag and easily fasten catcher bag to tool using the Velcro strap. Features an easily emptied zippered pouch.

Use catcher bag 500610 for XX-51-46 straight nose assemblies

Catcher bag sold separately



Rev. 5/16

GAGE BILT
MADE IN U.S.A.

GAGE BILT Inc.

44766 Centre Court +1 (586) 226-1500
Clinton Twp., MI 48038 +1 (586) 226-1505 Fax

Type:		Fastener:	Recommended Tool:
Single Action Non Self-Releasing 1/8" Ø		MS20600, CHERRY® 9000 HUCK® PT, SP & MS OLYMPIC RV200 & RV500	GB50
			Alternate Tools: GB52 & GB715
Ref. No.	Qty.	Description	4C-51-46
1	1	Nose Tip	10334
2	1	Retaining Ring	50308
3	2	Pin-Racket	15521
4	1	Anvil-Holder	10318
5	1	Collet	20326
6	1	Jaw Assy	30428-A1
7	1	Super Grip Jaw Assy	30428-CS
8	1	Wave Spring	A-1614
9	1	Screw	70303
10	1	Drawbolt	70301
11	1	Locknut	70411