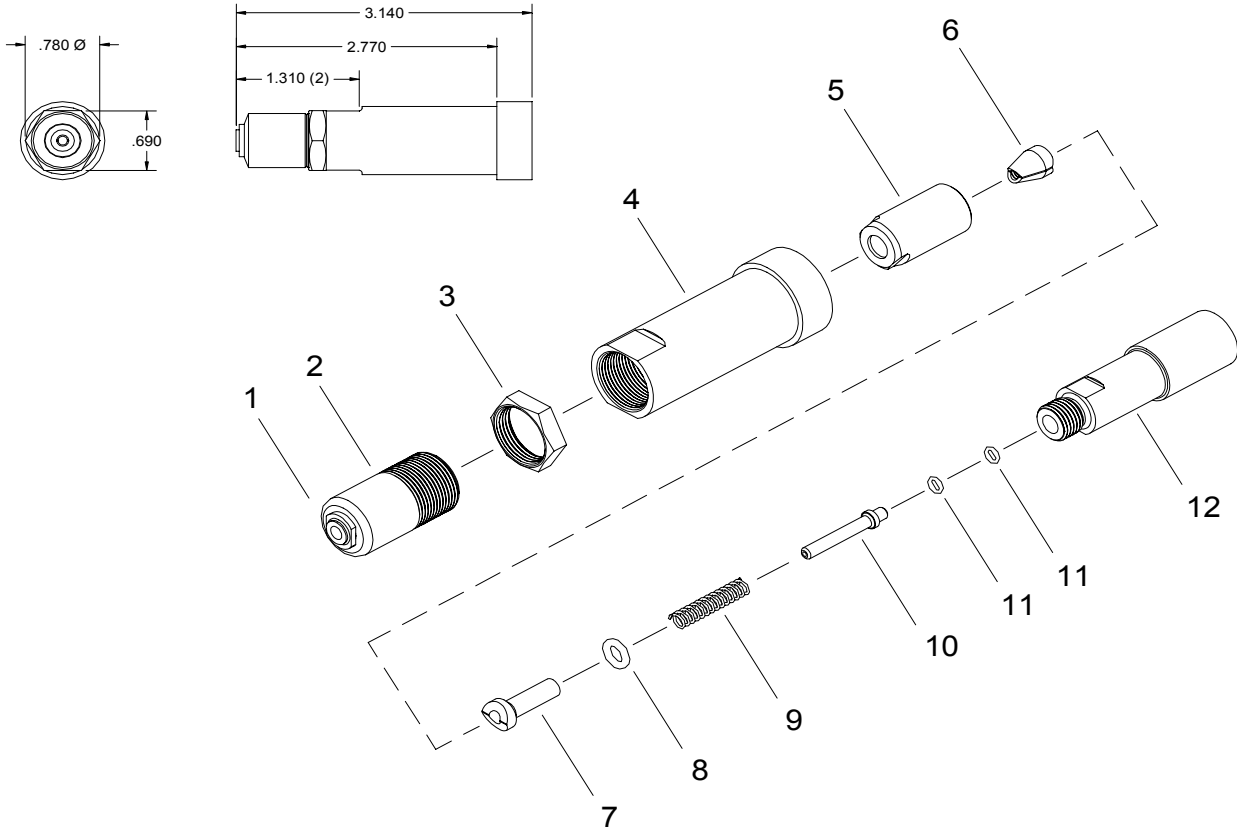


NOSE ASSEMBLY DATA SHEET



Rev. 9/11



*GBP700
 1/8" Ø steel maximum
 3/16" Ø aluminum maximum

GAGE BILT

MADE IN U.S.A.

GAGE BILT Inc.

44766 Centre Court (586) 226-1500
 Clinton Twp. MI 48038 (586) 226-1505 Fax
 e-mail: solutions@gagebilt.com / www.gagebilt.com

| Type: | | CHERRYMAX®, CHERRYMAX® 'AB', MBC® LOCK CREATOR BACR15FR/FP, BACR15GF/GK | Recommended Tool: GB784 |
|---|------|--|----------------------------|
| Self-Releasing Front Ejecting 1/8", 5/32" & 3/16" Ø | | | Alternate Tool: *GBP700 |
| Ref. No. | Qty. | Description | 456MAX-680-31 |
| 1 | 1 | Anvil-Insert | 10421 |
| 2 | 1 | Sleeve Ass'y (Incl. #1) | 10420 |
| 3 | 1 | Jam Nut | 70411 |
| 4 | 1 | Sleeve Adapter | 40505 |
| 5 | 1 | Collet | 20513 |
| 6 | 1 | Jaw Set | 30513 |
| 7 | 1 | Follower | 40506-1 |
| 8 | 1 | O'Ring | 400774 |
| 9 | 1 | Spring | 50505 |
| 10 | 1 | Stem Stop | 70408 |
| 11 | 2 | O'Ring | A-1034 |
| 12 | 1 | Collet Adapter | 70409 |