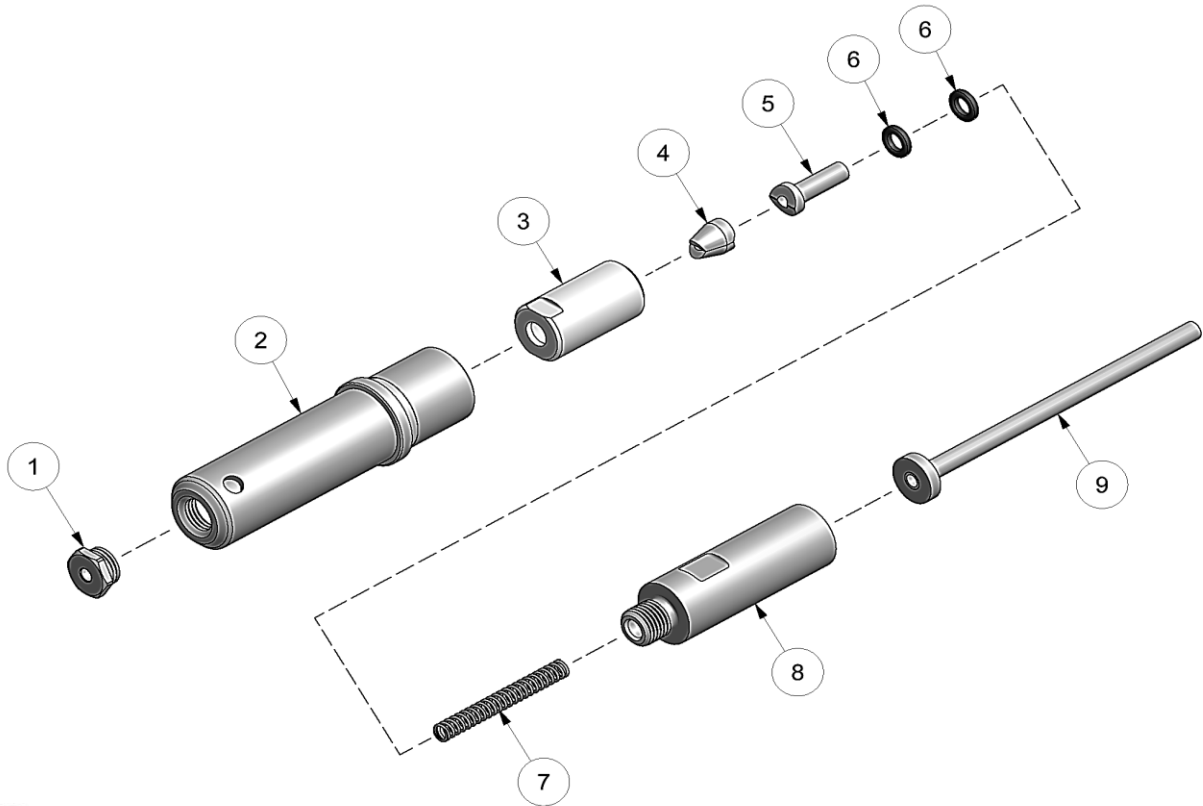
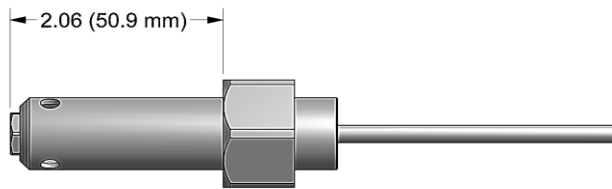
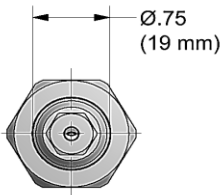


# NOSE ASSEMBLY DATA SHEET



Use Hex-Key in rear of piston for nose assembly attachment.

\*Remove for -6 Intermax.

11/06 Rev. 3/16

**GAGE BILT**  
MADE IN U.S.A.

**GAGE BILT Inc.**

44766 Centre Court +1 (586) 226-1500  
Clinton Twp., MI 48038 +1 (586) 226-1505 Fax  
e-mail:solutions@gagebilt.com / www.gagebilt.com

Type:		Fastener:	Recommended Tool:
Non Self-Releasing 1/8", 5/32" & 3/16" Ø		CHERRYMAX®, CHERRYMAX® 'AB', MBC® LOCK CREATOR BACR15FR/FP, BACR15GF/GK	GB751
			Alternate Tools: GB752, GB722 & GB2480(A)
Ref. No.	Qty.	Description	<b>456MAX-751A-21</b>
1	1	Nose Tip	10206-1
2	1	Anvil-Holder Assy	10942-4
3	1	Collet	70105
4	1	Jaw Set	30513
5	1	Follower	40506
6	2	O'Ring	400774
7	1	Spring	70109
8	1	Extension-Collet	70466
9*	1	Pintail Tube	40446