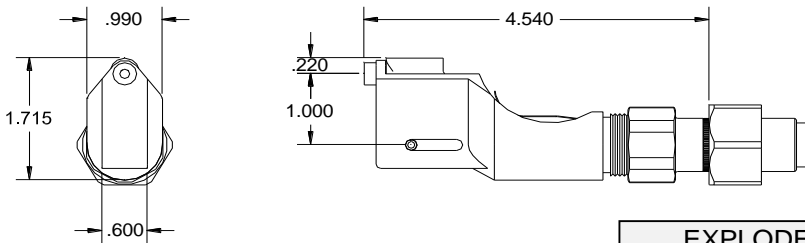
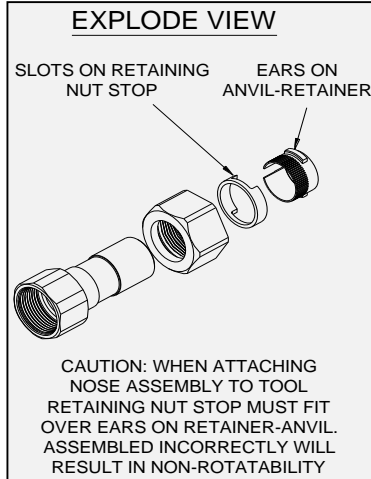
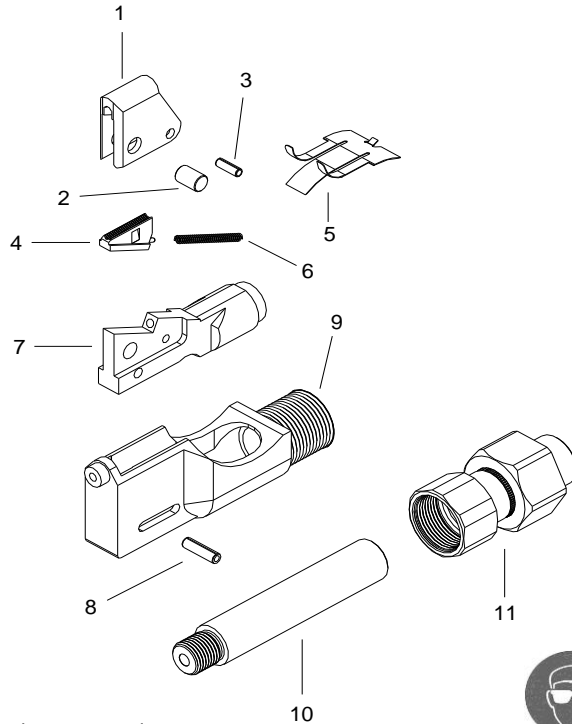


NOSE ASSEMBLY DATA SHEET



Screw drawbolt adapter (10) on head piston. Insert frame adapter (11) into nose fitting of tool and hand tighten. Nose assembly should rotate if stop is properly aligned when tightened.



Disassembly:
Remove frame adapter (11) providing access to drawbolt adapter (10). Remove drawbolt adapter, use wrench to loosen. Remove guard (5) and roll pin (8) allowing drawbolt and jaw assembly to be lifted out of frame (9). Remove dowel pin (2) and roll pin (3) and dismantle jaw assembly.

Assembly:
Reverse procedure. Insert spring (6) and jaw (4) into drawbolt (7). Place saddle (1) onto drawbolt and install dowel (2) and roll pin (3). Place drawbolt and jaw subassembly into frame (9) and install roll pin (8) and guard (5).

Use Loctite® #242 or equivalent when assembling drawbolt adapter and drawbolt, and when assembling frame adapter to frame.

5/07 Rev 4/16



*GB756 Requires 756155 Stroke Limiter

GAGE BILT
MADE IN U.S.A.

GAGE BILT Inc.

44766 Centre Court (586) 226-1500
Clinton Twp. MI 48038 (586) 226-1505 Fax
e-mail:solutions@gagebilt.com / www.gagebilt.com

Type:		CHERRYMAX®, CHERRYMAX® 'AB', MBC® LOCK CREATOR BACR15FR/FP, BACR15GF/GK, NAS1900 S & U SERIES BLIND RIVET WITH DRIVE WASHER	Recommended Tool(s):
Non Self-Releasing 1/8", 5/32" & 3/16" Ø			GB751
			Alternate Tools: GB722, GB731 GB752 & *GB756
Ref. No.	Qty.	Description	456MAX-731-430S
1	1	Saddle	78201
2	2	Dowel Pin	76302
3	1	Roll Pin	78103
4	1	Jaw	78104
5	1	Guard	76305
6	1	Spring	76306
7	1	Drawbolt	78207
8	1	Roll Pin	76308
9	1	Frame	76309
10	1	Drawbolt Adapter	70469
11	1	Frame Adapter	70460