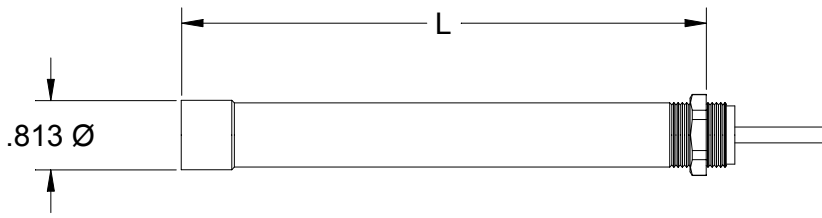
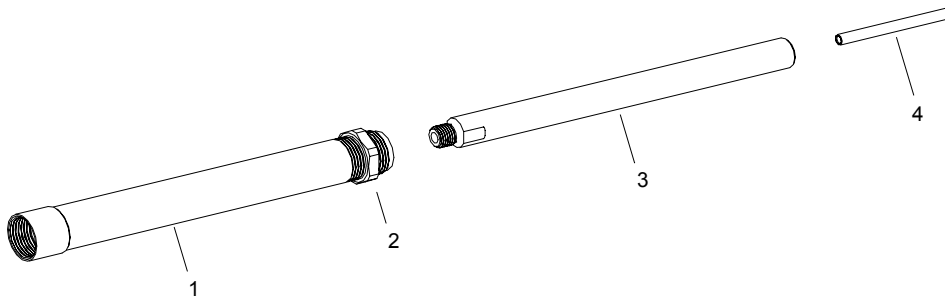


EXTENSION ASSEMBLY DATA SHEET

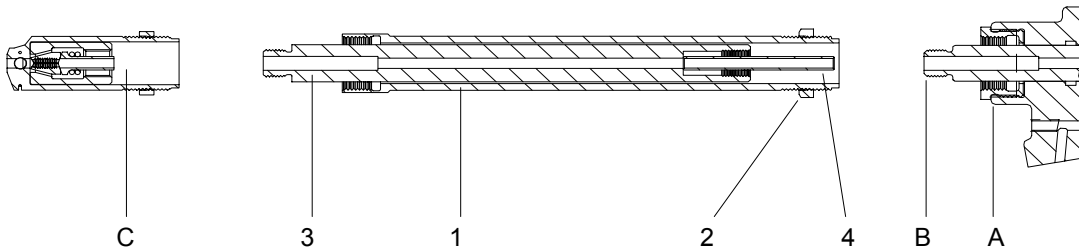


Part Number	L
*704002	2"
*704004	4"
*704006	6"
*704012	12"

These extensions help reach many restricted areas by increasing the overall length of the nose assembly. They fit directly on the GB704 Installation Tool and will accept any nose assembly for Cherrymax® and High Clinch rivets.



Ref.	Description	Qty.	Part Number			
			*704002	*704004	*704006	*704012
1	Sleeve Extension	1	70416	70417	70418	70418 (2 ea.)
2	Nut	1	70104	70104	70104	70104 (2 ea.)
3	Drawbolt Extension	1	70420	70421	70422	70422 (2 ea.)
4	Tube	1	70415	70415	70415	70415 (2 ea.)



1. Insert tube (4) into head piston (B), to replace spring (C not shown) when extending a 456MAX-701-17 Nose Assembly.
2. Screw drawbolt extension (3) onto end of head piston (B). Tighten securely using wrenches and flats provided.
3. Thread sleeve extension (1) snugly into end of head cylinder (A) until thread bottoms out.
4. Tighten nut (2) securely.
5. Install nose assembly per instructions on appropriate data sheet.

*Extensions may be assembled together to achieve various lengths.

Rev. 6/12

GAGE BILT
MADE IN U.S.A.

GAGE BILT Inc.
44766 Centre Court (586) 226-1500
Clinton Twp., MI 48038 (586) 226-1505 Fax
e-mail:solutions@gagebilt.com / www.gagebilt.com