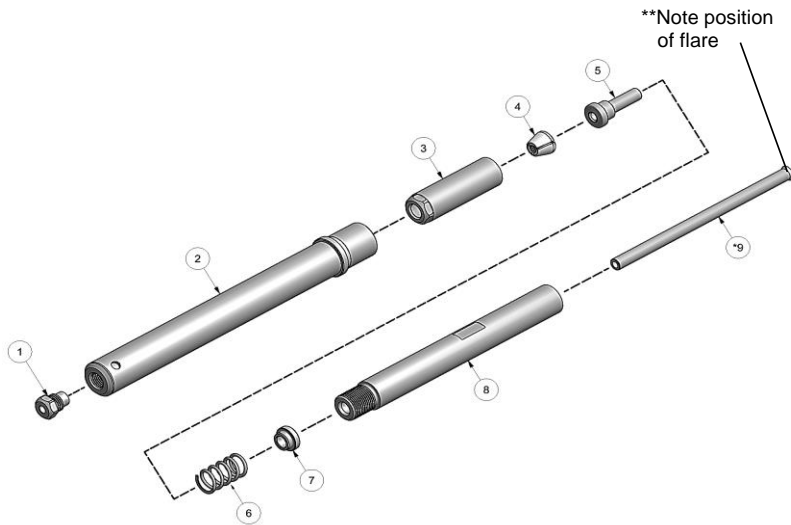
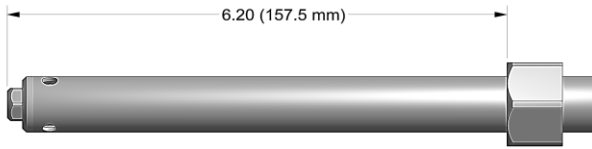
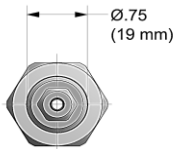


# NOSE ASSEMBLY DATA SHEET



## ASSEMBLY:

**Note:** If nose assy is assembled as it is when purchased new, follow steps 5-8 to attach to tool.

1. Place extension-collet (8) on a flat work surface thread side up.
2. Place cap (7) on top of extension-collet (8) and place spring (6) on top of cap (7).
3. Slide follower (5) thru spring (6) and cap (7). Place jaw assy (4) on top of follower (5).
4. Slide collet (3) over assembled parts and thread to extension-collet (8). Snug with 9/16" wrench to extension-collet (8) using flats.
5. Slide pintail tube (9) (if applicable see chart) into rear of collet-extension (8). (Note position of flare).
6. Thread assembled parts onto piston on tool. Snug with 9/16" wrench on flats of collet (3) and hex key into rear of piston of tool.
7. Slide anvil & holder assy (2) over assembled parts attached to piston on tool.
8. Slide retaining nut from tool onto anvil & holder assy (2) and tighten nose assy to tool.

## DISASSEMBLY:

Reverse assembly instructions.

Fastener:	Dia.	Nose Assembly	Nose Tip		Jaw Set	Pintail Tube
			Protruding Head	Countersunk Head		
Multi-Grip Protruding Head	3/16"	MGL06-752A-61	10248	----	30628	200506-6
	1/4"	MGL08-752A-61	10205	----	36801	----
Multi-Grip Countersunk Head	3/16"	MGLC06-752A-61	----	10248-4	30628	200506-6
	1/4"	MGLC08-752A-61	----	10211-1	36801	----
Monobolt®	3/16"	MB06-752A-61	10210	10210	30628	200506-6
	1/4"	MB08-752A-61	10213	10213	36801	----
Millimeter RV Plug	6mm	RVM6-752A-61	----	10167-2	36801	----
	7mm	RVM7-752A-61	----	10166-2	36801	----
	8mm	RVM8-752A-61	----	10166-3	36801	----



3/06 Rev. 5/16

# GAGE BILT

MADE IN U.S.A.

## GAGE BILT Inc.

44766 Centre Court +1 (586) 226-1500  
 Clinton Twp., MI 48038 +1 (586) 226-1505 Fax  
 e-mail:solutions@gagebilt.com / www.gagebilt.com

Type:		Fastener:	Recommended Tool:
Self-Releasing		See Chart	GB713
			Alternate Tools: GB722, GB752 & GB2480(A)
Ref. No.	Qty.	Description	XX-752A-61
1	1	Nose Tip	See Chart
2	1	Anvil & Holder Assy	10942-8
3	1	Collet	20845
4	1	Jaw Assy	See Chart
5	1	Follower	40811
6	1	Spring	50421
7	1	Cap	40810
8	1	Extension-Collet	70822
9	1	Pintail Tube	See Chart