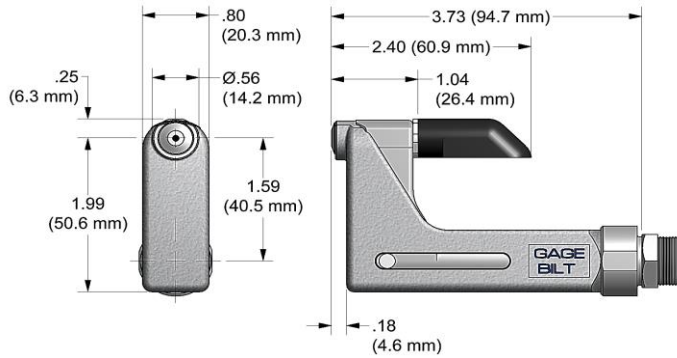


# NOSE ASSEMBLY DATA SHEET

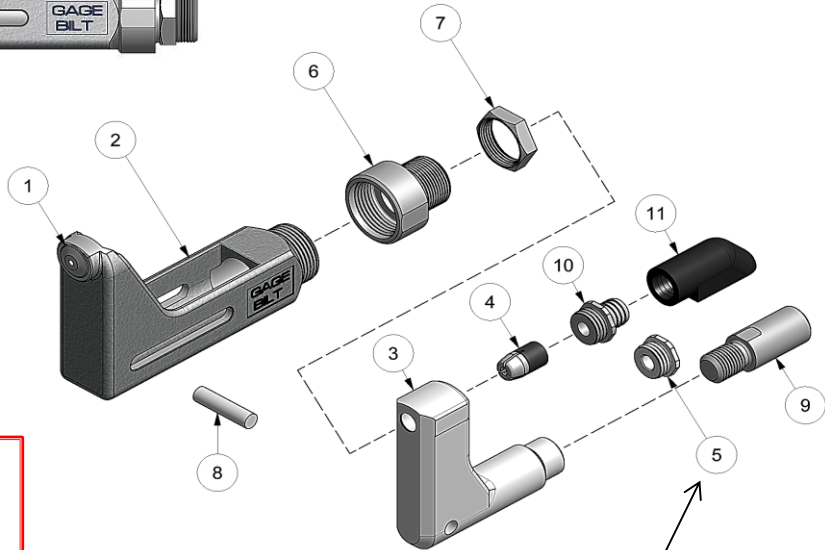


**CAUTION:**  
Do not operate if pintail deflector is removed. Pintail may eject forcibly. SEVERE PERSONAL INJURY MAY RESULT.

## Attachment

Screw nose assembly onto tool until it stops then back off until nose is in desired position. (Warning: do not back off nose assembly more than one complete turn). Lock jam nut (70411) against adapter (70341)

**WARNING:**  
KEEP FINGERS AND HANDS AWAY FROM NOSE ASSEMBLY DURING OPERATION TO PREVENT SEVERE PERSONAL INJURY.



Cap (5) is used for closed access applications only or when clearance is an issue.

3/07 REV. 4/15

# GAGE BILT

## GAGE BILT Inc.

44766 Centre Court (586) 226-1500  
Clinton Twp. MI 48038 (586) 226-1505 Fax  
e-mail:solutions@gagebilt.com / www.gagebilt.com

Type:		Fasteners:	Recommended Tool:
Non Self-Releasing 3/32" Ø		MS20600, Cherry® 9000 Huck® PT, SP & MS RV200 & RV500	GB715
			Alternate Tools: GB51
Ref. No.	Qty.	Description	3C-715-400S
1	1	Anvil Insert	13002
2	1	Anvil & Holder Assy (Inc. #1)	13373
3	1	Collet	20914
4	1	Super-Grip Jaw Assy	30314-S2
5	1	Cap	60428
6	1	Anvil Adapter	70341
7	1	Jam Nut	70411
8	1	Pin	70468
9	1	Collet Adapter	70340
10	1	Barbed Retainer	60440
11	1	Deflector	61107