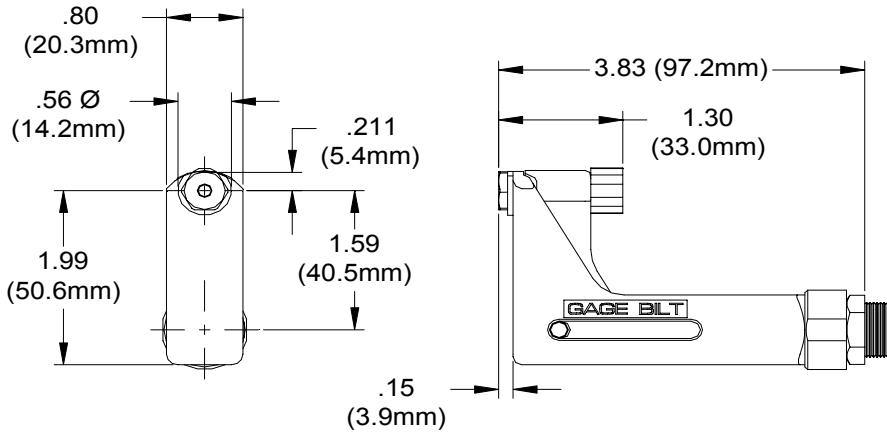


NOSE ASSEMBLY DATA SHEET



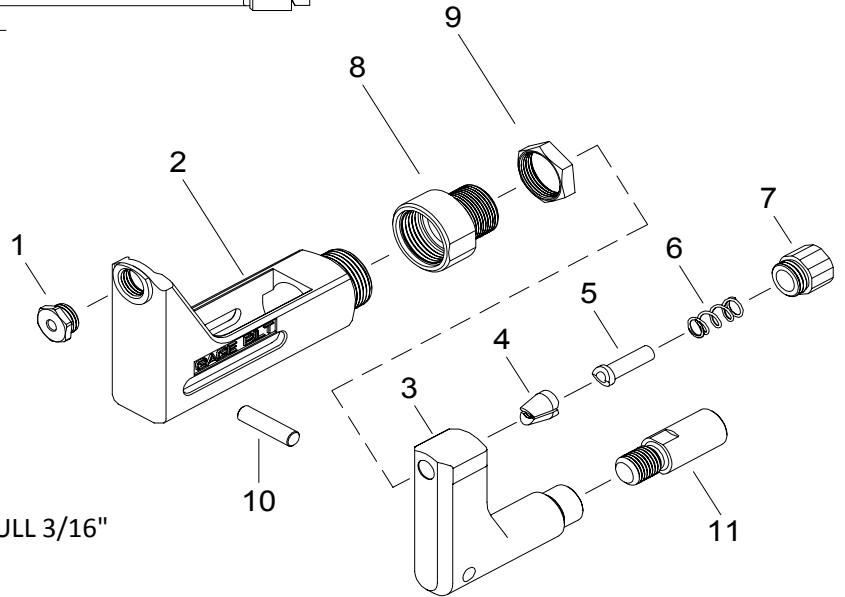
Attachment:

Screw nose assembly onto tool until it stops then back off until nose is in desired position.

(Warning: do not back off nose assembly more than one complete turn.) Lock jam nut (70336) against face of tool.



*GB715 5/32" & 3/16" ALUMINUM ONLY
 **GB51 5/32" ALUMINUM ONLY DOES NOT PULL 3/16"



6/07 Rev. 8/12

GAGE BILT
 MADE IN U.S.A.

GAGE BILT Inc.

44766 Centre Court (586) 226-1500
 Clinton Twp. MI 48038 (586) 226-1505 Fax
 e-mail:solutions@gagebilt.com / www.gagebilt.com

Type:	Fasteners:	Recommended Tool: *GB715
Non-Self-Releasing 1/8", 5/32" & 3/16" Ø	CHERRYMAX®, CHERRYMAX® 'AB', MBC® LOCK CREATOR BACR15FR/FP, BACR15GF/GK, NAS1900 S & U SERIES BLIND RIVET WITH DRIVE WASHER	Alternate Tools: **GB51

Ref. No.	Qty.	Description	456MAX-715A-40OS
1	1	Nose Tip	13452
2	1	Anvil Holder	13368
3	1	Collet	20914
4	1	Jaw Set	30617
5	1	Follower	40304-2
6	1	Spring	A-1384
7	1	Cap	60429
8	1	Anvil Adapter	70341
9	1	Jam Nut	70411
10	1	Pin	70468
11	1	Collet Adapter	70340