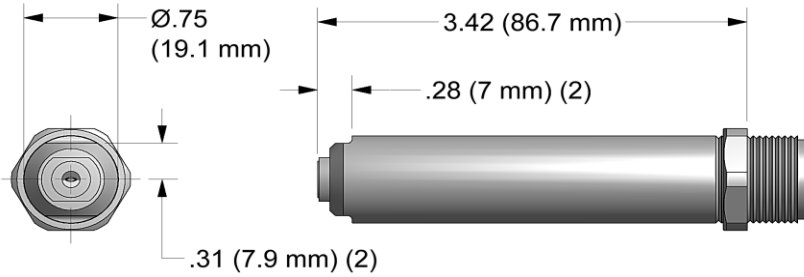


# NOSE ASSEMBLY DATA SHEET

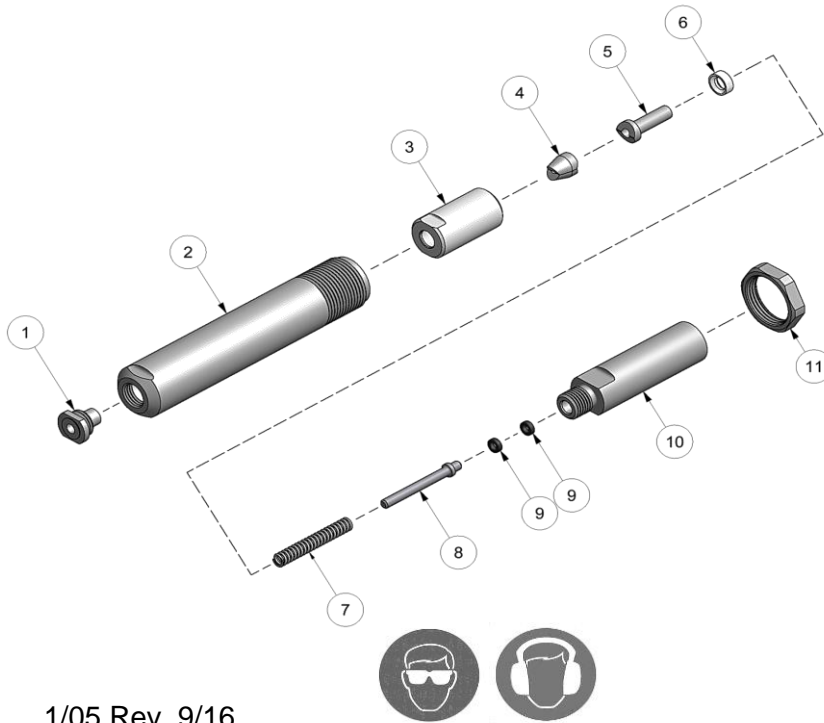


## INSTALLING ON RIVETER

1. Slide o'rings (9) on short end of stem stop (8), slide spring (7) on long end and insert into collet bolt (11) short end first. Screw collet bolt onto end of head piston securely using wrench on flat provided.

2. Place jaws (4) inside collet (3). Place bumper (6) over follower (5) and place this assembly in collet against jaws making sure tapered end on follower lines up with split line of jaws. Screw this assembly onto end of collet bolt. Tighten securely using wrenches on flats provided.

3. Take anvil holder (2) with nose tip (1) and jam nut (11) assembled and slide over collet assembly and thread into end of head cylinder. Adjust sleeve (2) by loosening jam nut (11), then insert largest diameter rivet to be installed into sleeve and rotate sleeve until jaws just grab pintail. Tighten jam nut (11) securely. **CAUTION: ANVIL HOLDER MUST BE ADJUSTED PROPERLY. IF ANVIL HOLDER IS TIGHTENED UNTIL IT HITS COLLET WILL RESULT IN DAMAGE TO NOSE**



1/05 Rev. 9/16



**GAGE BILT**  
MADE in USA

44766 Centre Court Clinton Twp. MI 48038 USA  
Ph: +1 (586) 226-1500 Fax: +1 (586) 226-1505  
solutions@gagebilt.com / www.gagebilt.com

Type:		CHERRYMAX®, CHERRYMAX® 'AB', MBC® LOCK CREATOR BACR15FR/FP, BACR15GF/GK	Recommended Tool:
Self-Releasing Front Ejecting 1/8", 5/32" & 3/16" Ø			GBP456A
Ref. No.	Qty.	Description	<b>456MAX-749-35</b>
1	1	Anvil	10425
2	1	Anvil Holder	10342
3	1	Collet	70105-1
4	1	Chuck Jaws	30513-1
5	1	Follower	40506-1
6	1	Bumper	70108
7	1	Spring	50426
8	1	Stem Stop	70414
9	2	O'Ring	A-1034
10	1	Collet Bolt	70413
11	1	Jam Nut	70104