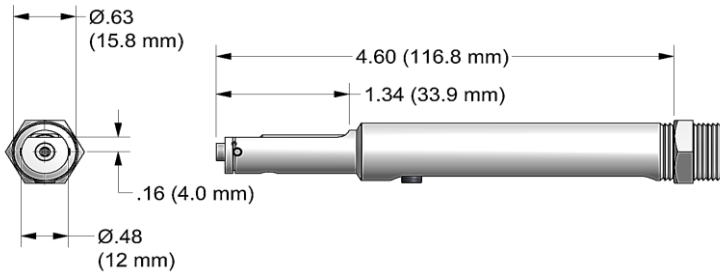
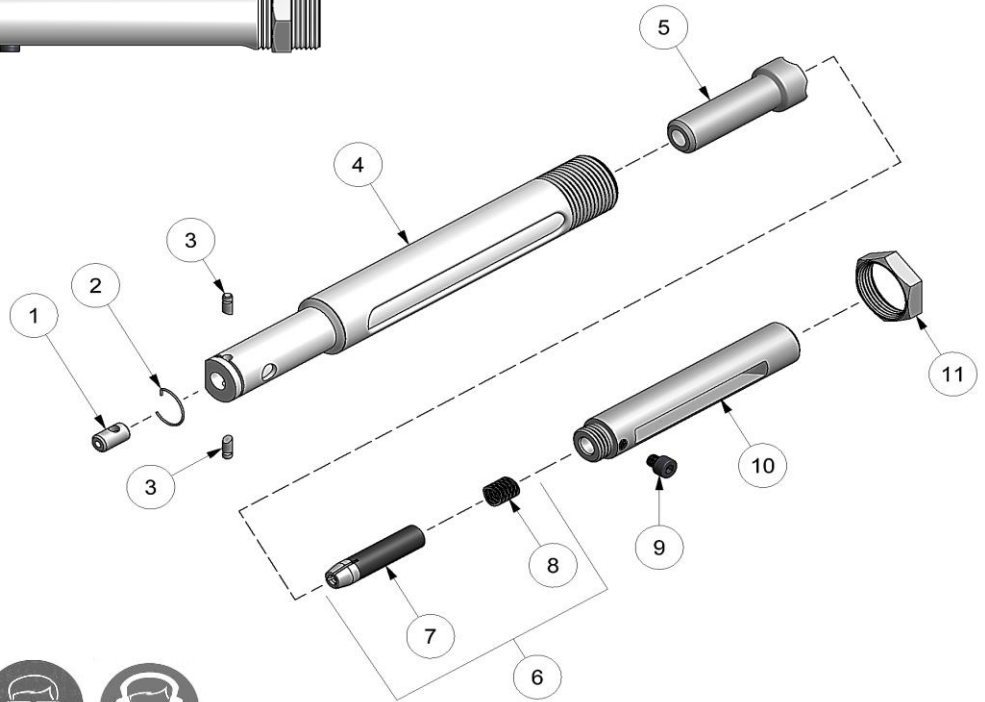


# NOSE ASSEMBLY DATA SHEET



**POINT NOSE ASSEMBLY DOWN  
WHEN ATTACHING TO TOOL**



**Effective FOD Control (foreign object damage/debris). Install catcher bag on the front of the riveter to catch spent pintail stems. Place nose assembly through grommet on catcher bag and easily fasten catcher bag to tool using the Velcro strap. Features an easily emptied zippered pouch.**

*Use catcher bag 500610 for XX-51-46 straight nose assemblies*

*Catcher bag sold separately*



Rev. 1/16

**GAGE BILT**  
MADE IN U.S.A.

**GAGE BILT Inc.**

44766 Centre Court +1 (586) 226-1500  
Clinton Twp., MI 48038 +1 (586) 226-1505 Fax  
e-mail: solutions@gagebilt.com / www.gagebilt.com

Type:		Fastener:	Recommended Tool:
Single Action Non Self-Releasing 3/32" Ø		MS20600, CHERRY® 9000 HUCK® PT, SP & MS OLYMPIC RV200 & RV500	GB50
			Alternate Tools: GB51 & GB715
Ref. No.	Qty.	Description	3C-51-46
1	1	Anvil Insert	10333
2	1	Retaining Ring	50308
3	2	Pin-Racket	15520
4	1	Anvil-Holder	10318
5	1	Collet	20326
6	1	Jaw Assy (Incl. 7 & 8)	30315-A1
7	1	Super Grip Jaw Assy	30315-CS
8	1	Wave Spring	A-1614
9	1	Socket Head Cap Screw	70303
10	1	Drawbolt	70301
11	1	Jam Nut	70411