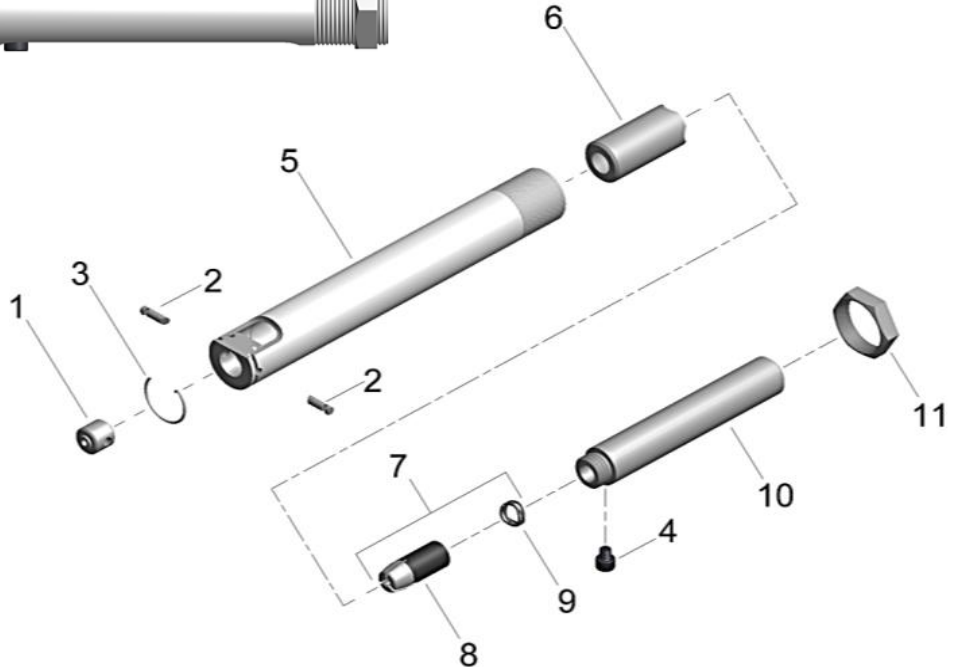
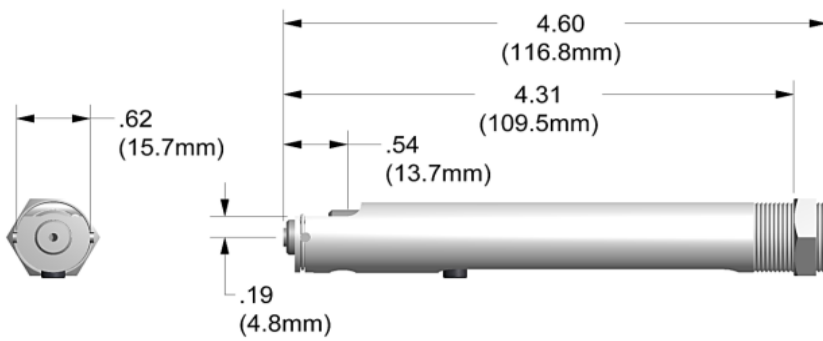


# NOSE ASSEMBLY DATA SHEET



Effective FOD Control (foreign object damage/debris). Install catcher bag on the front of the riveter to catch spent pintail stems. Place nose assembly through grommet on catcher bag and easily fasten catcher bag to tool using the Velcro strap. Features an easily emptied zippered pouch.

Use catcher bag 715610 for XX-715-43 straight nose assemblies

Catcher bag sold separately



7/07 Rev. 3/14

Covered under Patent No. 5,029,881

\*Requires 730715 adapter.

\*\*These tools for 3/16" Ø Self-Plugging aluminum maximum.

**GAGE BILT**  
MADE in the USA

**GAGE BILT Inc.**

44766 Centre Court +1 (586) 226-1500  
Clinton Twp. MI 48038 USA +1 (586) 226-1505 Fax  
e-mail: solutions@gagebilt.com / www.gagebilt.com

Type: Single Action	Fasteners: NUT PLATE RIVETS MS20600 SERIES CCR224/264/274 MS/9SP/PT BACR15CC/CF/DA/DR	Recommended Tool: **GB715
3/32", 1/8", 5/32" & 3/16" Ø		Alternate Tools: **GB51 & *GB752

Ref. No.	Qty.	Description	3C-715B-43	4C-715B-43	5C-715B-43	6C-715B-43
1	1	Anvil Insert	10383	10384	10385	10386
2	2	Ratchet Pin	15504	15503	15501	15502
3	1	Ratchet Pin Spring	50302	50302	50302	50302
4	1	Screw	70303	70303	70303	70303
5	1	Anvil Holder	10301	10301	10301	10301
6	1	Collet	20301	20301	20301	20301
7	1	Jaw Assembly (Inc. 8 & 9)	30314-A1	-----	-----	-----
8	1	Super Grip Jaw Assy	30314-S5	30418-S	30529-S	30633-S5
9	1	Wave Spring	A-1513	-----	-----	-----
10	1	Drawbolt	70301	70301	70301	70301
11	1	Locknut	70411	70411	70411	70411