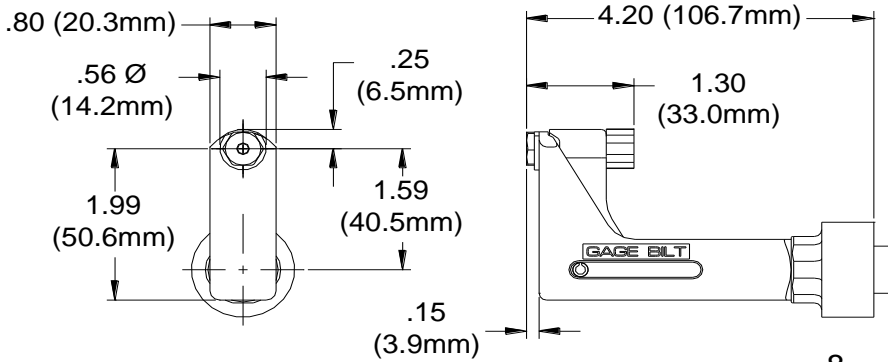


NOSE ASSEMBLY DATA SHEET



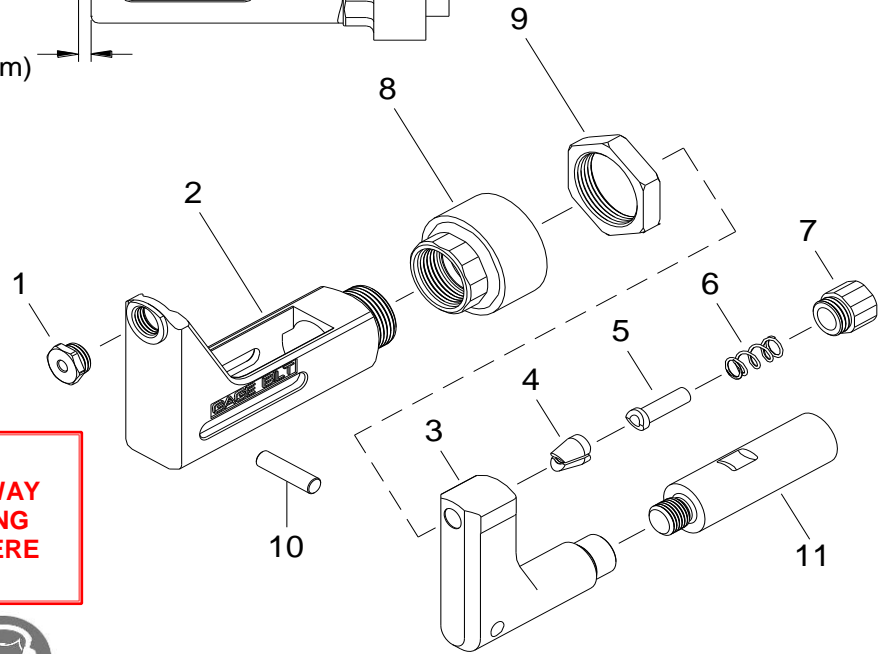
CAUTION:
Pintail may eject forcibly. Use for closed access applications only to prevent SEVERE PERSONAL INJURY!

Attachment:

Screw nose assembly onto tool until it stops then back off until nose is in desired position.

(Warning: do not back off nose assembly more than one complete turn.) Lock in place with jam nut (70336) against anvil adapter (70331).

WARNING:
KEEP FINGERS AND HANDS AWAY FROM NOSE ASSEMBLY DURING OPERATION TO PREVENT SEVERE PERSONAL INJURY.



*USE ADAPTER 745751 & DO NOT USE # (9) JAM NUT 70336.

3/08 REV. 10/14

GAGE BILT
MADE IN U.S.A.

GAGE BILT Inc.

44766 Centre Court (586) 226-1500
Clinton Twp. MI 48038 (586) 226-1505 Fax
e-mail:solutions@gagebilt.com / www.gagebilt.com

Type:		Fasteners:	Recommended Tool: GB751
Non Self-Releasing 1/8", 5/32" & 3/16" Ø		CHERRYMAX®, CHERRYMAX® 'AB', MBC® LOCK CREATOR BACR15FR/FP, BACR15GF/GK, NAS1900 S & U SERIES BLIND RIVET WITH DRIVE WASHER	Alternate Tools: GB752, GB722, GB2480 & *GB745
Ref. No.	Qty.	Description	456MAX-752A-42OS
1	1	Nose Tip	13452
2	1	Anvil Holder	13368
3	1	Collet	20915
4	1	Jaw Set	30617
5	1	Follower	40304-2
6	1	Spring	A-1503
7	1	Cap	60429
8	1	Anvil Adapter	70331
9	1	Jam Nut	70336
10	1	Pin	70468
11	1	Collet Adapter	70332