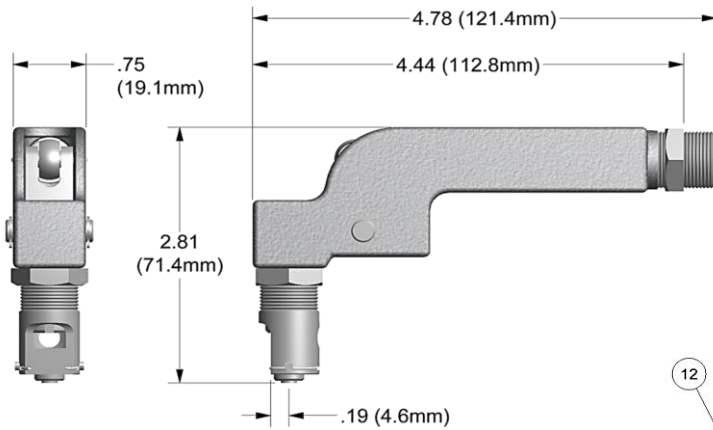


NOSE ASSEMBLY DATA SHEET

CAUTION:

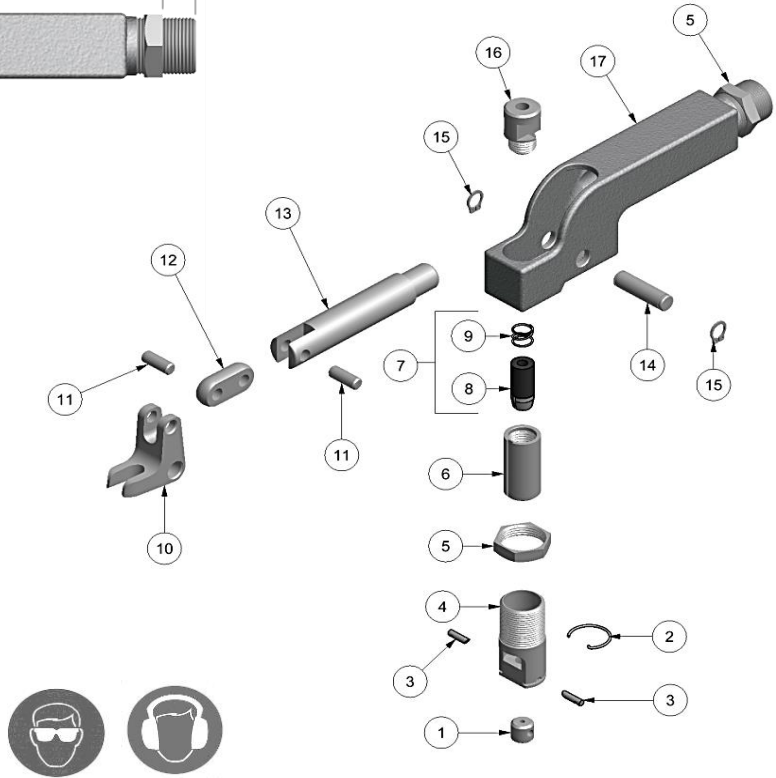
Pintail may eject forcibly. Use for closed access applications only to prevent SEVERE PERSONAL INJURY!!



Attachment Instructions

Using your index finger press the 70309 closier cap completely down into the nose assembly. While continuing to hold the closier cap down, thread the nose assembly completely onto tool. Position nose assembly to the desired position and lock in place using 70411 locknut.

- Consult Gage Bilt for all other alternative tool options.



8/06 Rev. 6/14

Covered Under Patent No. 5,029,881

*Use 3/16 Ø Self-Plugging aluminum maximum

GAGE BILT
MADE IN U.S.A.

GAGE BILT Inc.

44766 Centre Court (586) 226-1500
Clinton Twp. MI 48038 (586) 226-1505 Fax
e-mail:solutions@gagebilt.com / www.gagebilt.com

| | | |
|---|---|-----------------------------|
| Type: Single Action Non Self-Releasing | Fastener: NAS1398A / NAS1399A NAS1738A / NAS1739A RV1000/1100 & 1200 | Recommended Tool: *GB715 |
| 3/32, 1/8, 5/32 & 3/16 Ø | | Alternate Tools: *GB51 |

| Ref. No. | Qty. | Description | 3A-715B-44RA | 4A-715B-44RA | 5A-715B-44RA | 6A-715B-44RA |
|----------|------|------------------------|--------------|--------------|--------------|--------------|
| 1 | 1 | Insert | 10303 | 10304 | 10305 | 10306 |
| 2 | 1 | Spring-Ratchet Pin | 50302 | 50302 | 50302 | 50302 |
| 3 | 2 | Pin-Ratchet | 15504 | 15503 | 15501 | 15502 |
| 4 | 1 | Housing-Nose | 10335 | 10335 | 10335 | 10335 |
| 5 | 2 | Locknut | 70411 | 70411 | 70411 | 70411 |
| 6 | 1 | Collet | 20401 | 20401 | 20401 | 20401 |
| 7 | 1 | Jaw Ass'y (Inc. 8 & 9) | 30314-A2 | 30418-A1 | 30529-A1 | 30633-A1 |
| 8 | 1 | Super Grip Jaw Assy | 30314-S11 | 30418-S6 | 30529-S5 | 30633-S14 |
| 9 | 1 | Spring | 50306 | 50306 | 50306 | 50306 |
| 10 | 1 | Pivot | 70304 | 70304 | 70304 | 70304 |
| 11 | 2 | Link Pin | 70305 | 70305 | 70305 | 70305 |
| 12 | 1 | Link Pin | 70306 | 70306 | 70306 | 70306 |
| 13 | 1 | Drawbolt | 70307 | 70307 | 70307 | 70307 |
| 14 | 1 | Pivot Pin | 70308 | 70308 | 70308 | 70308 |
| 15 | 2 | Retaining Ring | 400987 | 400987 | 400987 | 400987 |
| 16 | 1 | Closier Cap | 70309 | 70309 | 70309 | 70309 |
| 17 | 1 | Housing | 10338 | 10338 | 10338 | 10338 |