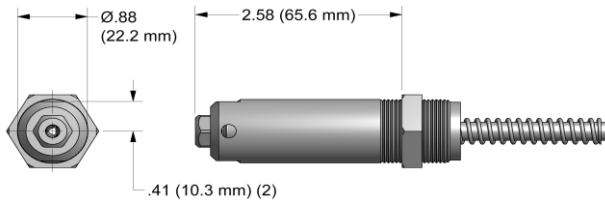


# NOSE ASSEMBLY DATA SHEET



## SELECTION CHART FOR COUNTERSUNK AND PROTRUDING HEAD RIVETS

RIVET	DIA.	NOSE ASSEMBLY	NOSE TIP	FOLLOWER
AVEX® (1624 PROTRUDING HEAD)	3/16	AV6-743-24	10248-7	48808
AVEX® (1624 COUNTERSUNK HEAD)	3/16	6C-743-24	10248-8	48808
AVSEAL®	10mm	ASM10-743-24	10173	48808
BULB-TITE® (STRUCTURAL)	3/16	BT06-743-24	12282-1	48808
	1/4	BT08-743-24	10391	48808
	9/32	BT09-743-24	10289	40901
KLAMPTITE® (STRUCTURAL) RIVET	3/16	6KT-743-24	10263	48808
	1/4	8KT-743-24	10262	48808
MILLIMETER SEAL PLUG	4mm	5N-743-24	10203	48808
	5mm	6N-743-24	10204	48808
POP® OPEN END NAIL RIVET	5/32	5N-743-24	10203	
	3/16	6N-743-24	10204	48808
	1/4	8N-743-24	10211	
POP® CLOSED END NAIL RIVET (ALUMINUM MANDREL)	5/32	5CEA-743-24	13472	
	3/16	6CEA-743-24	13473	48808
POP® CLOSED END NAIL RIVET (STEEL MANDREL)	5/32	5CES-743-24	13476	
	3/16	6CES-743-24	13477	48808
	1/4	8CES-743-24	13469	
PLASTIC SPLIT	3/16	6P-743-24	10167	48808
	1/4	8P-743-24	10166	48808
T RIVET®	3/16	6T-743-24	10209	48808
	1/4	8T-743-24	10286	48808

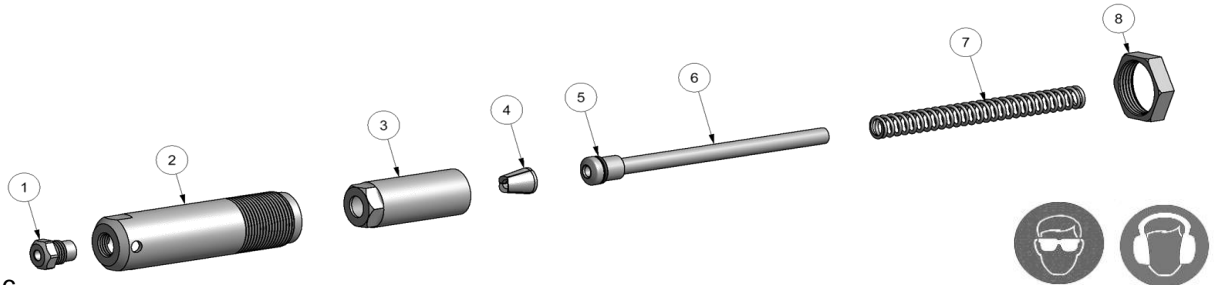
## SELECTION CHART FOR PROTRUDING HEAD RIVETS ONLY

RIVET	DIA.	NOSE ASSEMBLY	NOSE TIP	FOLLOWER
N, Q & E, POP®, CLOSED END, AVEX®, MAGNA-LOK®, MAGNA-BULB®, HEMLOK®, KLAMPTITE®, BULB-TITE® (NON-STRUCTURAL) & ULTRA-GRIP COMMERCIAL RIVETS (1)	3/16	MGL06-743-24	10170	48808
	1/4	MGL08-743-24	10205	48808

1. FOR HIGH PRODUCTION SERRATED STEM APPLICATIONS USE PH6 & PH8-734-20.

POP® AND ULTRA-GRIP® ARE REGISTERED TRADEMARKS OF EMHART TECHNOLOGIES. MAGNA-LOK® AND MAGNA-BULB® ARE REGISTERED TRADEMARKS OF ARCONIC INC. AVEX®, AVSEAL®, KLAMPTITE® & MONOBOLT® AND HEMLOK® ARE REGISTERED TRADEMARKS OF AVDEL UK LIMITED. BULB-TITE® IS A REGISTERED TRADEMARK OF GESIPA FASTENERS USA, INC. T RIVET® IS A REGISTERED TRADEMARK OF CHERRY AEROSPACE FASTENERS.

REV. 11'16



9/90 Rev. 11/16

**GAGE BILT**  
MADE in USA

44766 Centre Court Clinton Twp. MI 48038 USA  
Ph: +1 (586) 226-1500 Fax: +1 (586) 226-1505  
solutions@gagebilt.com / www.gagebilt.com

Type:		Fasteners:		Recommended Tool:	
Self-Releasing		See Chart		GB743	
Ref. No.	Qty.	Description		<b>XX-743-24</b>	
1	1	Nose Tip		See Chart	
2	1	Anvil Holder		10951-2	
3	1	Collet		20867	
4	1	Jaw Set		30824	
5	1	O'Ring		400777	
6	1	Follower		See Chart	
7	1	Spring		50626	
8	1	Jam Nut		70820	