

GAGE BILT

GB722TCKL Trailer and Cab Kit

GAGE BILT's blind rivet and lockbolt installation kit designed especially for Truck and Trailer manufacturing and maintenance facilities. The GB722TCKL is configured to meet your needs, whether you're fixing Wabash®, Great Dane®, Peterbilt®, Kenworth®, Freightliner®, Mack® or any other brand trailer or truck.



The GB722TCKL kit contains:



- Our Heavy-Duty GB722 installation tool.
- MG06-722-60 - 6" long nose assembly for 3/16" Magna-Grip® lockbolts needed to fix Kenworth® and Peterbilt®
- MG08-722-20 - 2" long nose assembly for 1/4" Magna-Grip lockbolts.
- LB06-722-20 - 2" long nose assembly for 3/16" lockbolt for stainless steel grill bolts.
- MGLC68-752A-21 - 2" long nose assembly with two nose tips for 3/16" and 1/4" structural blind rivets, in any material, for the hood and cab.
- 704214 Stem Catcher Bag to collect spent pintail stems for F.O.D. control.
- 704221 Metal Carrying Case to store all these items in one convenient place.

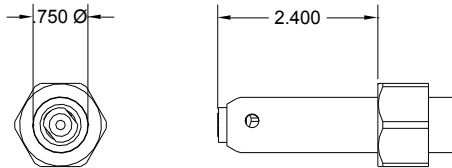
Contact us to customize your own kit.

GB722TCKL

BLIND RIVETS

(2 PULLS REQUIRED FOR MOST APPLICATIONS)

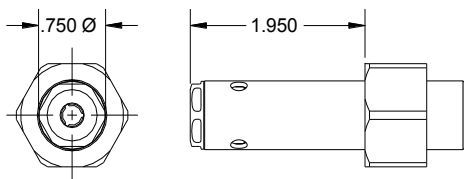
	3/16"	ALUMINUM, STEEL OR STAINLESS STEEL MAGNA-LOK® BLIND RIVET	MGLC68-752A-21 (USE 10248-4 NOSE TIP)
	1/4"	ALUMINUM, STEEL OR STAINLESS STEEL MAGNA-LOK BLIND RIVET	MGLC68-752A-21 (USE 10211-1 NOSE TIP)



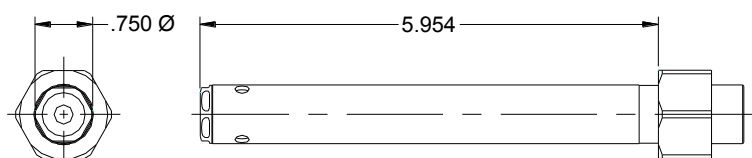
MGLC68-752A-21

LOCKBOLTS

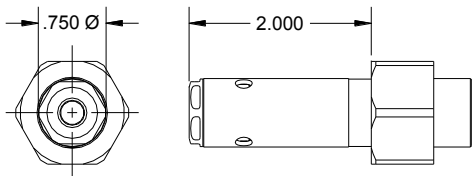
	3/16"	STAINLESS STEEL C6L®	LB06-722-20
	3/16"	STEEL C6L	
	3/16"	ALUMINUM C6L	
	3/16"	STEEL MAGNA-GRIP	MG06-722-60
	3/16"	ALUMINUM MAGNA-GRIP	
	1/4"	STEEL MAGNA-GRIP	MG08-722-20
	1/4"	ALUMINUM MAGNA-GRIP	



LB06-722-20



MG06-722-60



MG08-722-20