

## SURFACE MOUNT SCHOTTKY BARRIER RECTIFIERS

### MBRX220H--MBRX260H

### FEATURES

- Low forward surge current
- Ideal for surface mounted applications
- Low leakage current



### MECHANICAL DATA

- Case: JEDEC SOD-123FL, molded plastic over passivated chip
- Terminals: Solder Plated, solderable per MIL-STD-750, Method 2026
- Polarity: Color band denotes cathode end

### Maximum Ratings (@TA = 25°C unless otherwise specified)

Characteristic	Symbol	MBRX220H	MBRX230H	MBRX240H	MBRX260H	UNITS
Device marking code		H22	H23	H24	H26	
Maximum recurrent peak reverse voltage	$V_{RRM}$	20	30	40	60	V
Maximum RMS voltage	$V_{RMS}$	14	21	28	42	V
Maximum DC blocking voltage	$V_{DC}$	20	30	40	60	V
Maximum average forward rectified current $T_J=90^\circ\text{C}$	$I_{(AV)}$	2.0				A
Peak forward surge current 8.3ms single half-sine-wave superimposed on rated load	$I_{FSM}$	40				A

### Thermal Characteristics

Characteristic	Symbol	MBRX220H	MBRX230H	MBRX240H	MBRX260H	UNITS
Operating temperature range	$T_J$	- 55 --- + 150				°C
Storage temperature range	$T_{STG}$	- 55 --- + 150				°C

### Electrical Characteristics (@TA = 25°C unless otherwise specified)

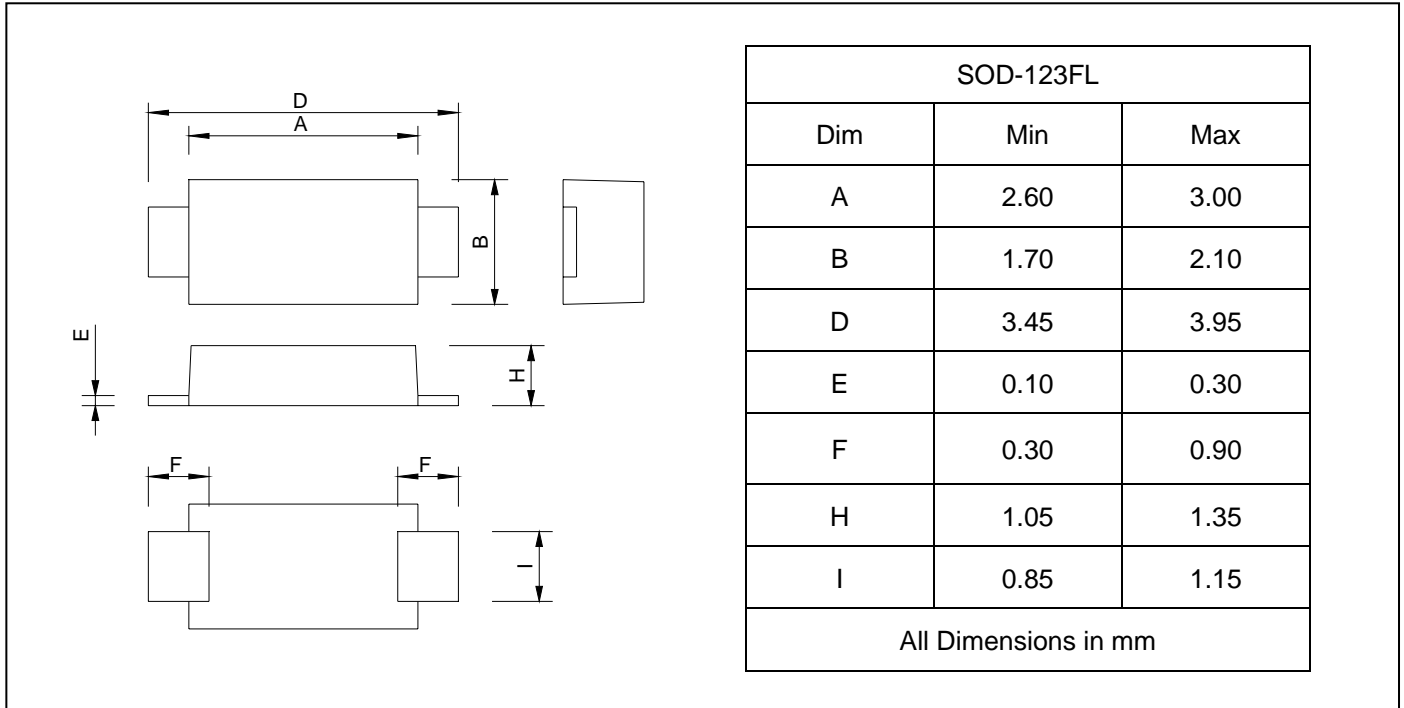
Characteristic	Symbol	MBRX220H	MBRX230H	MBRX240H	MBRX260H	UNITS
Maximum instantaneous @ $I_{FM}=2.0\text{A}$ forward voltage	$V_F$	0.55			0.75	V
Maximum DC reverse current $T_J=25^\circ\text{C}$ at rated DC blocking voltage $T_J=125^\circ\text{C}$	$I_R$	0.1				m A
		10				



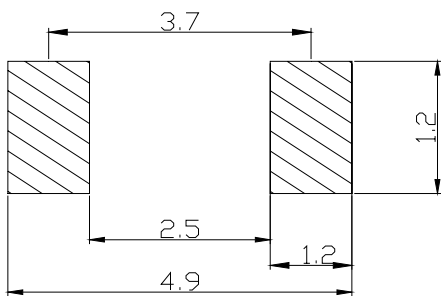
**SURFACE MOUNT SCHOTTKY  
BARRIER RECTIFIERS**

***MBRX220H--MBRX260H***

**PACKAGE OUTLINE DIMENSIONS**



**SOLDERING FOOTPRINT**



Unit : mm

**PACKAGE INFORMATION**

Device	Package	Shipping
MBRX220H--MBRX260H	SOD-123FL	10000/Tape&Reel



# SURFACE MOUNT SCHOTTKY BARRIER RECTIFIERS

## MBRX220H--MBRX260H

FIG.1 – FORWARD DERATING CURVE

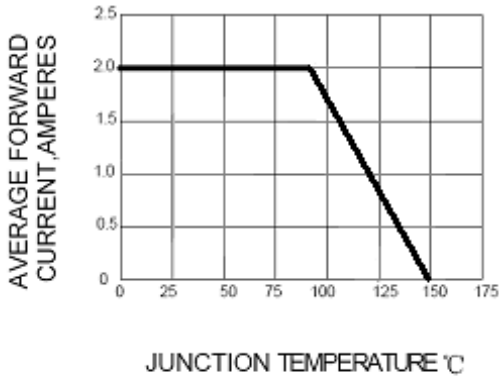


FIG.2– PEAK FORWARD SURGE CURRENT

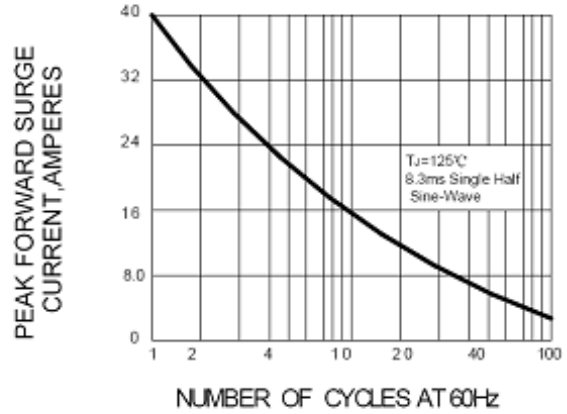


FIG.3 – TYPICAL FORWARD CHARACTERISTICS

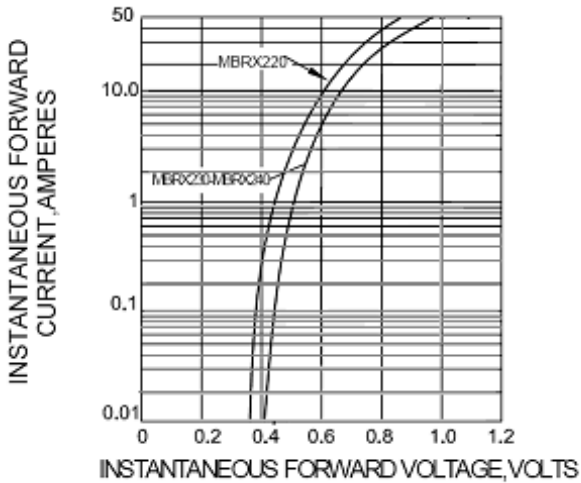


FIG.4 – TYPICAL REVERSE CHARACTERISTICS

