

# PEAR™ M5277i

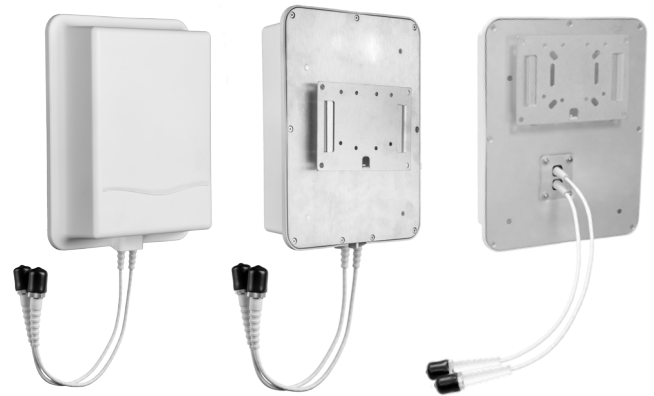
## Outdoor/In-Building Directional Antenna

[MIMO 698-960 / 1695-2700 MHz]



### Description:

Directional MIMO antenna for outdoor and in-building applications such as DAS. The antenna is dual polarized supporting MIMO for 698-960 MHz and 1695-2700 MHz.



Bottom Mounted  
Connector Version

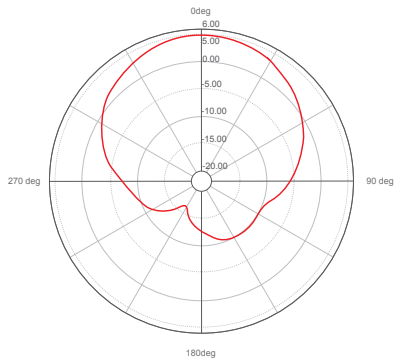
Rear Mounted  
Connector Version

Electrical Specifications		
Frequency Band	698-960 MHz	1695-2700 MHz
Polarization	Vertical / Horizontal	Dual slant 45° (±45°)
Input Connector Type	2x N-Type or 2x 4.3-10 DIN or 2x 4.1-9.5 DIN Connector (F) with cable (12"/30cm length)	
Impedance	50 Ω	
VSWR / Return Loss	<2.0:1 / 9.5 dB	<1.8:1 / 10.9 dB
Isolation between ports (typ.)	-25 dB	
Max. Gain	5.9 dBi	9.5 dBi
Avg. Gain	4.7 dBi	8.2 dBi
PIM @ 2x 43 dBm	4.3-10 DIN <-153 dBc N-Type / 4.1-9.5 DIN <-150 dBc	
Horizontal Beamwidth	~90°	~65°
Vertical Beamwidth	~110°	~65°
Input Power	50 W at ambient temperature of 122° F (25° C)	

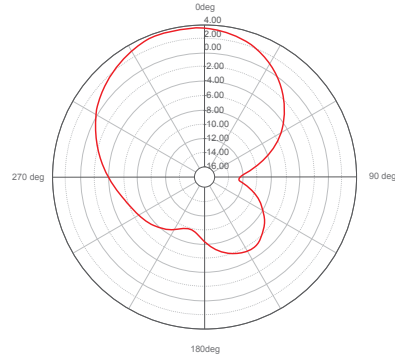
Mechanical Specifications	
Operating Temperature	-40° to 158 °F (-40° to +70°C)
Environmental Conditions	Outdoor* / Indoor
Antenna Weight	2.1 lbs (950g)
Radome Dimensions (H x W x D)	10.2" x 8.0" x 2.5" (259 x 203 x 65mm)
Flammability Rating	UL 94-V0
Outdoor Ingress Protection	IP65*
RoHS	Compliant
Radome Color	RAL 9016 (white)**
Cable	Plenum Rated
Approved for use in Plenum Space	Listed & Tested by Intertek / ETL
Shipping Dimensions (Bottom Connector Version)	15.7" x 10.6" x 5.3" / 400 x 270 x 135mm
Shipping Weight (Bottom Connector Version)	3.7 lbs (1.7 Kg)

\* IP65 rating only for antenna versions with bottom mounted connector.

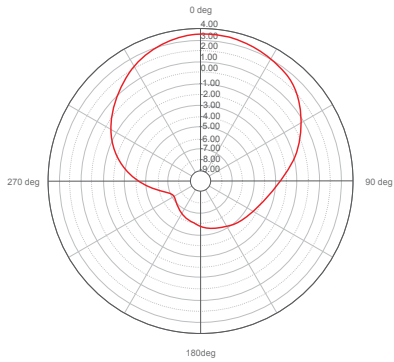
\*\* Radome can be painted with recommended paint "Krylon fusion for plastic".



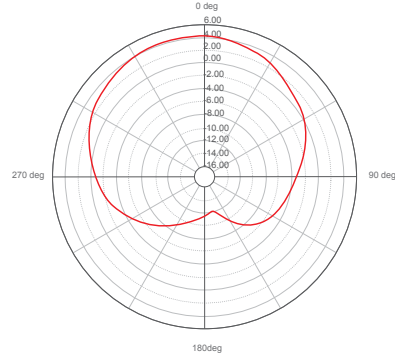
**710 MHz**



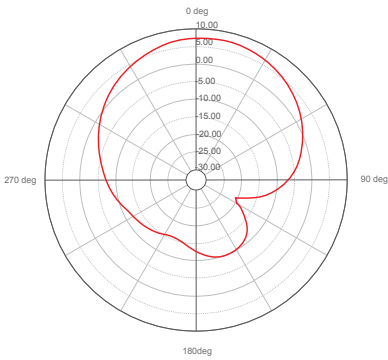
**960 MHz**



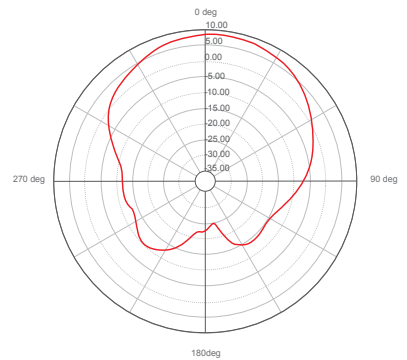
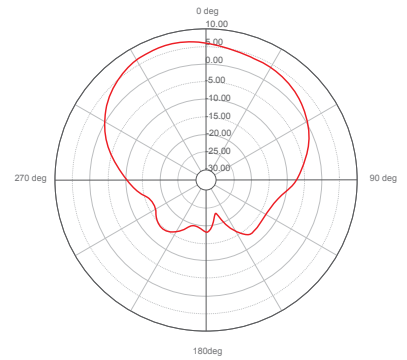
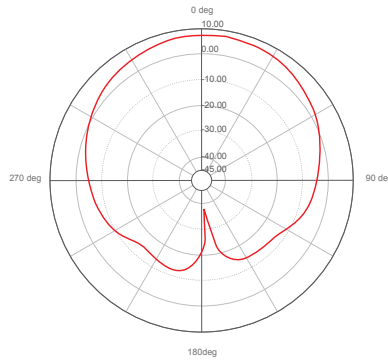
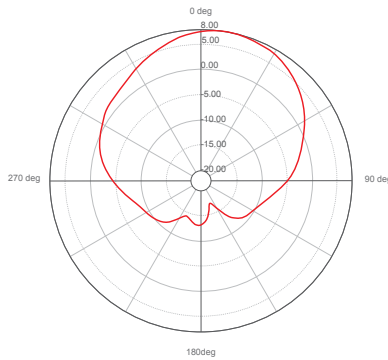
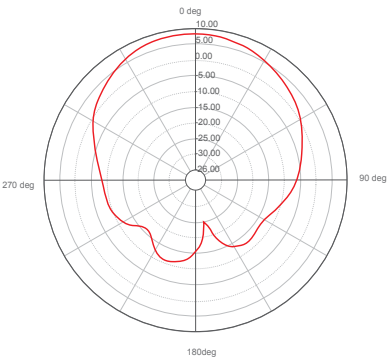
**1710 MHz**



**1910 MHz**



**2500 MHz**



Release Date: 4. November 2015; Revision: E; Patent Pending

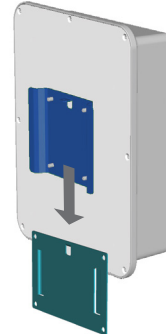
## Mounting Options

This antenna can be mounted using any of the following mounting brackets. Optional mounting brackets need to be ordered as a separate line item. See Ordering Options for details.

### Mounting Plate Installation (Standard)

After affixing the mounting plate to the wall, then mount the antenna on to the mounting plate by sliding it into the slots and securing it with the provided fasteners.

**Included with antenna**

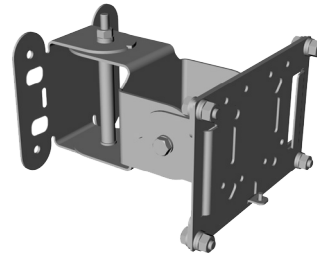


### Swivel Mounting Bracket

#### Video Clip

Galtronics swivel mounting bracket offers an easy installation solution to mount Galtronics' PEAR panel antennas to either a pole or a wall. The mounting bracket allows a tilt of up to +/-45deg in the horizontal as well as in the vertical plane.

**P/N: 62-29-03**



## Ordering & Antenna Options

Part Number	Connector	Description	Connector Position	Environmental
02121261-05277	2x N-Type	PEAR™ M5277i	Bottom	Indoor/Outdoor
02121261-M5277	2x N-Type	PEAR™ M5277i with Swivel Mount (P/N: 62-29-03)	Bottom	Indoor/Outdoor
02125261-05277	2x 4.1-9.5 DIN	PEAR™ M5277i	Bottom	Indoor/Outdoor
02130261-05277	2x 4.3-10 DIN	PEAR™ M5277i	Bottom	Indoor/Outdoor
02130261-M5277	2x 4.3-10 DIN	PEAR™ M5277i with Swivel Mount (P/N: 62-29-03)	Bottom	Indoor/Outdoor
02121261-06036-3	2x N-Type	PEAR™ M5277i	Rear	Indoor
02125261-06036-3	2x 4.1-9.5 DIN	PEAR™ M5277i	Rear	Indoor
02130261-06036-3	2x 4.3-10 DIN	PEAR™ M5277i	Rear	Indoor
62-29-03		Swivel Mounting Bracket (Standalone)		