

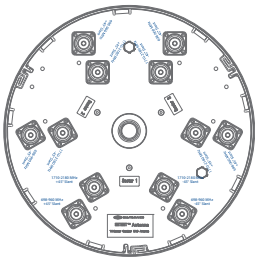
EXTENT™ T4879

Tri-Sector Outdoor Antenna

[698-960, 1710-2180 MHz]

DESCRIPTION:

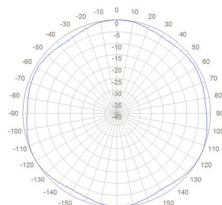
Broadband tri-sector cross-polarized antenna for applications such as outdoor distributed antenna systems (DAS).



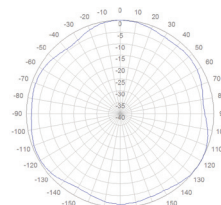
Electrical Specifications					
Frequency Band [MHz]	698-820	820-960	1710-1910	1910-2000	2000-2180
Polarization	Dual slant 45° (±45°)				
Antenna Structure	Tri-Sector				
Input	12x 7/16 DIN female - Bottom				
Impedance	50 Ω				
VSWR	<1.7:1		<1.7:1		
Gain / Sector	12 dBi	12 dBi	14-15 dBi	14.5-15.5 dBi	
In Band Isolation between Ports	< -25 dB Typical				
Inter-Band Isolation	-40 dB Typical				
Azimuth HPBW (±5°)	75°	75°	60°	65°	75°
Elevation HPBW (±1°)	18°	15°	8°	6.5°	6.5°
Cross-Pol φ < HPBW	< 12 dB Typical				
Downtilt	0° fixed				
PIM @ 2 x 43 dBm per Ports	< -150 dBc				
Max. Input Power per Ports	250 Watts		200 Watts		
Ripple (±2dB) in omni mode with external combiners	3 dB		7 dB		

Mechanical Specifications	
Operating Temperature	-40 to 158°F (-40 to +70°C)
Antenna Weight	46.3 lbs (21 kg)
Antenna Diameter	14.5" (370mm)
Antenna Height (without connectors)	48.0" (1220mm)
Ingress Protection	IP65
Radome Color	Utility Gray or Brown, custom colors possible
Wind survival Rating	125 mph (200 kph)

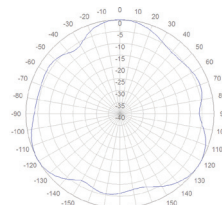
OMNI MODE - PATTERNS with external combiners:



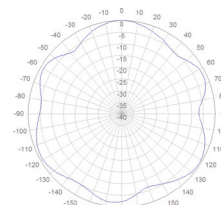
740 MHz



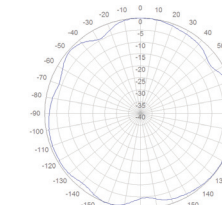
880 MHz



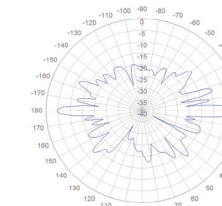
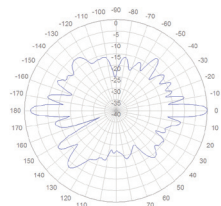
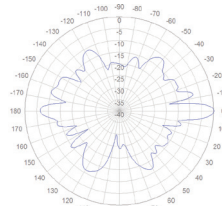
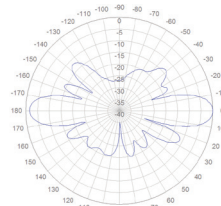
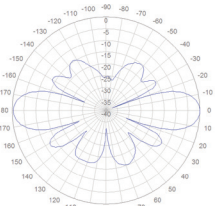
1750 MHz

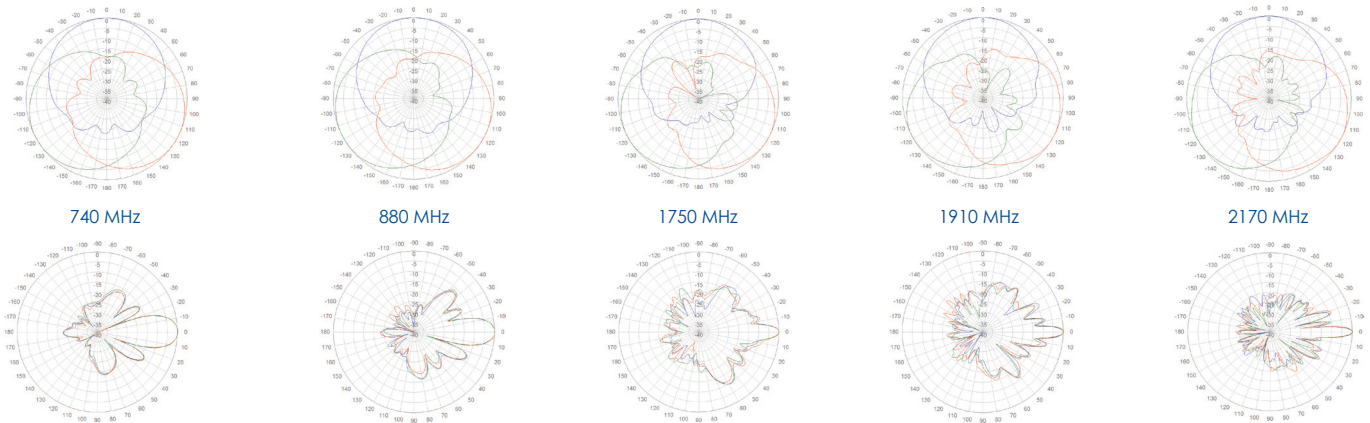


1910 MHz

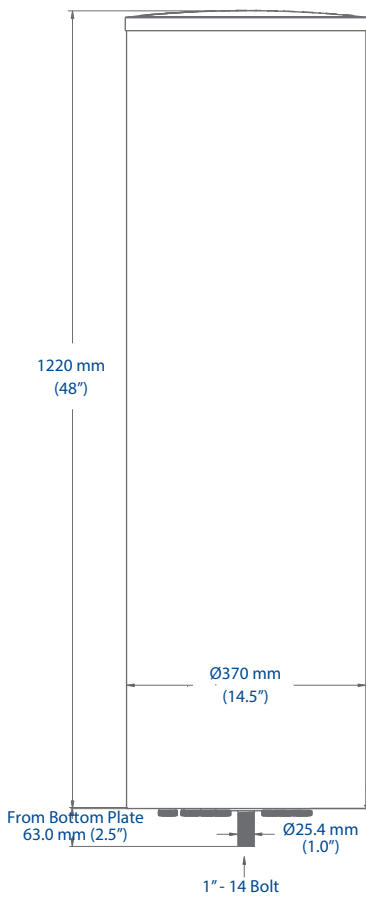
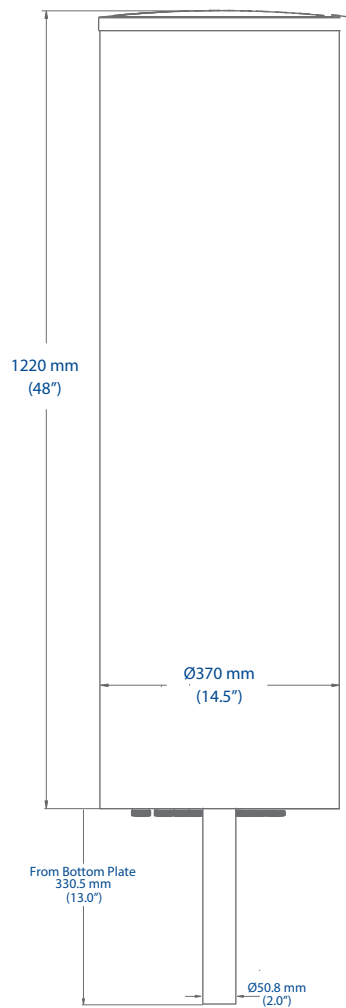
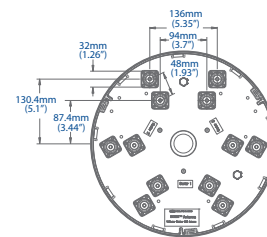


2170 MHz



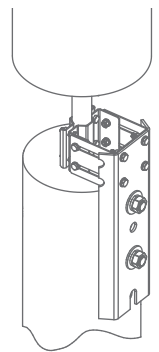
TRI-SECTOR MODE - PATTERNS:

MOUNTING INTERFACE & ANTENNA OPTIONS:

Part Number	Radome Color	Mounting Interface:
04119242-05623-1	Grey	1" Threaded Bolt (see below drawings, Option 1)
04119242-05623-6	Brown	1" Threaded Bolt (see below drawings, Option 1)
04119242-05623	Grey	13" Center Rod (see below drawings, Option 2)
04119242-05623-5	Brown	13" Center Rod (see below drawings, Option 2)

MECHANICAL DRAWINGS:
OPTION 1

OPTION 2

OPTION 1 & 2 - Bottom View

MOUNTING INFORMATION:

Option 1:
 The antenna can be mounted using the 1"-14 Bolt. Third party mounting fixtures are available. More information can be provided on inquiry.

Option 2 (see bottom & right):
 The antenna can be mounted on the top of an utility pole using the optional Galtronics pole mounting bracket suitable for poles from 6" to 13" diameter (see below).


Mounting Kit for pole top installations (Option 2)

Rotate and lock the antenna according to the needs of the network.

Align the antenna to the center of the pole for optimal stability.

