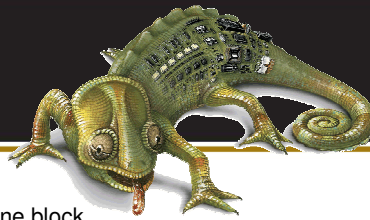




gentec



kameleon  
ADAPTABILITÉ DU CONTRÔLE D'ÉCLAIRAGE

KC-451 CPC – Parking Outlet and  
Lighting Control Unit

### General Description

The modular design of the KC-451 CPC allows for engine block heating outlet and external lighting energy management according to outdoor temperature and illumination, time of day or of year through the use of an astronomical clock.

The application typical loads are:

- Outdoor outlets
- Engine block heater
- Outdoor lighting
- Embedded snow melting system
- Etc.

### Applications

- Office buildings
- Hotels, motels
- Industry parking lots

### Features

This assembly is designed for changeover cycle activation of load groups according to various set points:

- Outdoor temperature (4 adjustable ranges °C and °F)
- Time (hour, day, week and season)
- Outdoor illumination
- ON/OFF changeover (programmable)

The KC-450 series consists of two control modules KC-440 and KC-451 CPC. The KC-451 CPC is the main control module allowing for programming and control parameter display. KC-451 CPC inputs are:

- 1 temperature sensor input
- 1 dry contact input for remote operator
- 1 photocell type sensor input
- 1 energy manager input

Everything is assembled in a 1, 12, or 3R type enclosure depending on its location. The control outputs are equipped with 1 or 2 poles, 20 amps at 347 volt HID type relays. These relays are provided with a manual changeover device and a status indicator (ON or OFF).



Dimensions		
Model	Millimeters	Inches
KC-451-8	380 x 380 x 100	15 x 15 x 4
KC-451-16	580 x 380 x 100	24 x 15 x 4
KC-451-32	750 x 380 x 100	30 x 15 x 4

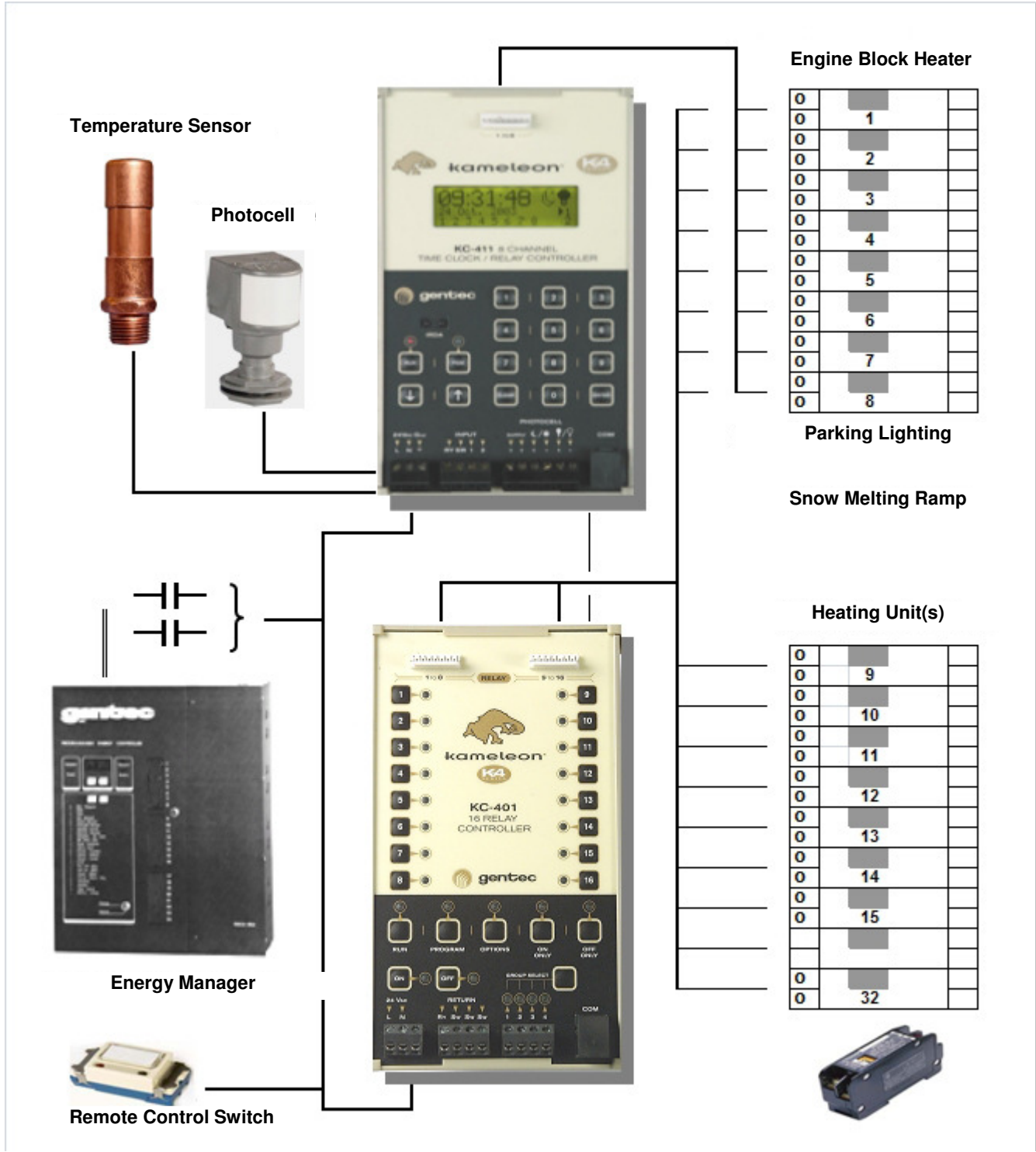
Features		
Inputs	1 – Outdoor temperature sensor (°C or °F) 1 – Photocell 2 – Manual remote control and energy management inputs	
Standard outputs (8 or more)	8 outputs – 8 relays, 20 amps at 347 volts, HID SPST 16 outputs – 8 relays, 20 amps at 347 volts, HID DPDT 32 outputs – 16 relays, 20 amps at 347 volts, HID DPDT	
Model	Inputs	Outputs
KC-451-8	1 – M/A/AUTO switch 1 – Temperature sensor	8 outputs – 20 amps at 347 volts SPST/DPDT
KC-451-16	1 – M/A/AUTO switch 1 – Temperature sensor	16 outputs – 20 amps at 347 volts SPST/DPDT
KC-451-32	1 – M/A/AUTO switch 1 – Temperature sensor	32 outputs – 20 amps at 347 volts SPST/DPDT



Système de contrôle de l'éclairage  
Programmable par le client

Project Name		Date
Project Number		





**Ordering Information**

35563-07	KC	-451
Part number	Kameleon Series	K4 Series Parking Outlet and Lighting Control Unit



Authorized Distributor