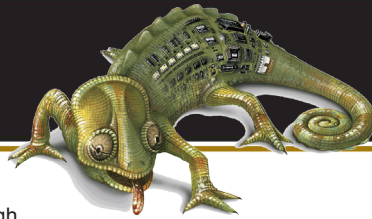




gentec



kameleon™
ADAPTABILITY IN LIGHTING CONTROL

K8 Relay Panels

General Description

- Practical design offering easy installation and high efficient running
- Standard sizes for 8, 16, 32 & 64-relay panel
- Removable hinged door with key lock
- Box knockouts are located on both sides of the enclosure to facilitate wire and conduit entries
- Panel and back panel accept 20 A HID heavy relays as well as electronic cards c/w wiring duck
- Line voltage compartment c/w cover plate
- Panel comes with transformer & supply terminal block

Application

Lighting Control interoperability in medium to large buildings controlled via LonWork technology using the K8 series devices:

- LonWork Controller K8 series
- Input card KC-821
- Output card KC-831, KC-832
- Time Clock Controller KC-811
- Dimming Controller KC-841
- Blind controller KC-842

Overview

The K8 Series panel offers a robust, reliable low voltage lighting control solution. The panel comes pre-assembled and with field programmable controllers that can be commissioned quickly and easily. Quality standards as per ISO 9001:2008.

Features & Benefits

Practical design offering ease of installation, efficient running and interoperability with the BAS (Building Automation System)



Specifications

Color	Enclosures & steel doors are coated with ANSI/ASA 61 gray baked enamel
8 & 16-Relay Panels	8 & 16-relay panel made of cold-rolled 16 gauge steel
32 & 64-Relay Panels	32 and 64-relay panel made of cold-rolled 14 gauge steel (built for 24, 32, 48 & 64 relays configuration)
Mounting Plates	Galvanised plated removable mounting plates
Protection Plates	Galvanised zinc plated protection plates
Electrical	120/277/347 VAC multi-tap transformer 120, 277, 347 and 480 volts
Operating Environment	Temperature 0 to 50° C (32 to 112° F) Humidity (non-condensing) 10 to 90%
Certifications	UL listed, CSA, Assembly ISO 9001:2008

System Characteristics

- Individual 365-day astronomical time clock (KC-811) performs building specific scheduled operation positions
- Automatic calculation of sunrise and sunset times based on date and geographical data
- Automatic updates of all schedules for DST changes
- Functions application control:
 - Sweep ON/OFF
 - Manual OFF
 - Time-ON Extension
 - Flick Warning
 - Motion Sensing
 - Cleaning/Security
 - Dimming
 - Daylighting and Daylight Harvesting
 - Photocell
 - Astronomical Time Clock
 - Photoreactive Lighting Control and Dimming

Robust and Reliable HID Relay

- 20-amp mechanical latching relay
- 1 or 2 poles 277/347 volts
- 2 poles @ 480 VAC
- 2-wire control systems
- SCCR 22 Ka @ 277 VAC, rated 150,000 cycles

Accessories/Options

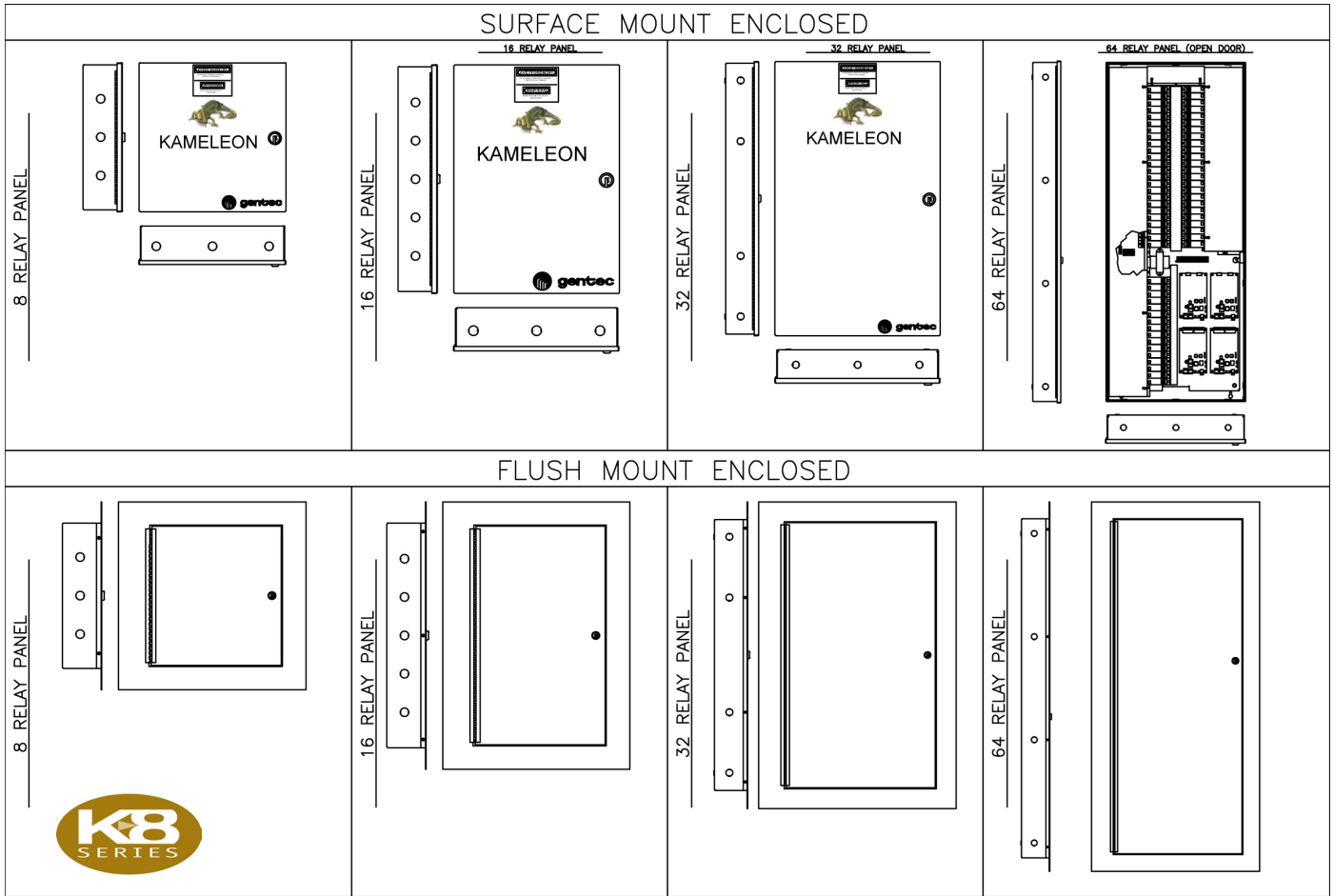
- Multi-voltage separator (120/277/347 volts)
- Doors for flush mount, invisible screws
- Drip hoods (surface mount only)
- Custom panel designs on request
- NEMA 2, 3R, 12, 4X etc.
- K800 configuration and application software c/w graphic control and display



Echelon Based System

Job Name		Date
Project No.		





Weights and Dimensions

K8-xx RP	Scale	Surface Mount Enclosed			Flush Mount Enclosed			Weights	
		Height	Wide	Deep	Height	Wide	Deep		
8	inches	15	15	4.1	19.4	19.4	4.1	26	lbs
	mm	381	381	101	493	493	101	12	kg
16	inches	23.3	15	4.1	27.7	19.4	4.1	42	lbs
	mm	592	381	101	704	493	101	19	kg
24	inches	33.5	20	4.1	37.9	24.4	4.1	83	lbs
	mm	850	508	101	962	620	101	38	kg
32	inches	33.5	20	4.1	37.9	24.4	4.1	83	lbs
	mm	850	508	101	96.2	620	101	38	kg
48	Inches	49.2	20	4.1	53.6	24.4	4.1	140	lbs
	mm	1250	508	101	1362	620	101	64	kg
64	inches	49.2	20	4.1	53.6	24.4	4.1	140	lbs
	mm	1250	508	101	1362	620	101	64	kg

Ordering Information

K8	XX	RP	S	1
1 = Series	2 = Capacity	3 = Relay Panel	4 = Mounting Type Surface (S) / Flush (F)	5 = Type 1, 2, 3R, 4X



kameleon
ADAPTABILITY IN LIGHTING CONTROL

Model	Relays Capacity	Type	Model	Relays Capacity	Type	Model	Relays Capacity	Type
K8-8RP-S1	8	<input type="checkbox"/> S	K8-32RP-S1	24	<input type="checkbox"/> S	K8-64RP-S1	48	<input type="checkbox"/> S
K8-16RP-S1	16	<input type="checkbox"/> F	K8-32RP-S1	32	<input type="checkbox"/> F	K8-64RP-S1	64	<input type="checkbox"/> F

Certified Distributor

2625 Dalton Avenue, Quebec QC G1P 3S9, Canada / 418-651-8000 / www.gentec.ca

