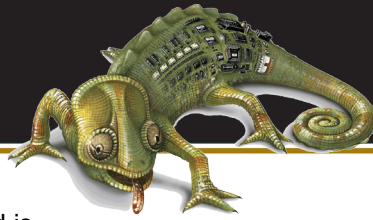




gentec

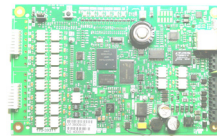
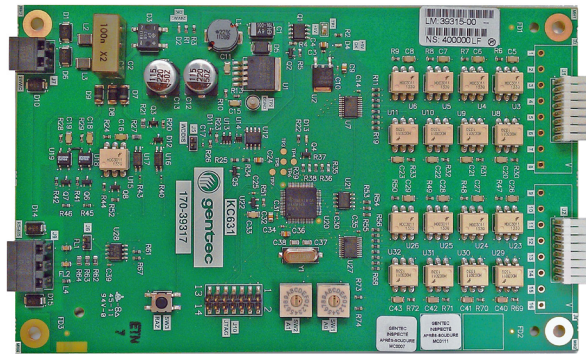


kameleon™
ADAPTABILITY IN LIGHTING CONTROL

KC-631 16-Output Card

General Description

- The KC-631 output lighting control card is designed to control either 16 low voltage relays 2-wire type (WR-6161)
- The design and construction conforms to the following demands:
 - Low Voltage Lighting Control
 - Modbus Communication to allow the interoperability of all output cards (3) and the master KC-600 BACnet controller card packaged in the same cabinet
- RS-485 (1) connector allowing connections to an internal Modbus network
- Modbus manual address via rotary switch: each card comes with two selectors
- Each output point of the KC-631 is individually:
 - Addressable
 - ON/OFF Command
 - Relay output status sent via the Modbus



BACnet Controller KC-600 IP



Control Relay 2 Wires

Application

Interoperable management of a complete group of 16 low voltage lighting control relays:

- Management, Grouping
- Relay Status Management
- Etc.

Technical Characteristics

The KC-631 card offers a flexible management control of zones and according to each zone requirement.

Specifications

Communication	Modbus TCP RS-485
Network	Modbus TCP to address each output (0-255)
Connections	Terminal Block

Functional Characteristics

- Modbus Communication Port RS-485
- Compatibility with different relay types 24 VAC:
 - 2-wire - WR-6161
- Each of the addressable outputs are configurable according to design conditions such as:
 - Room Switch
 - Occupancy Sensors
 - Schedules
 - External inputs according to requirements

Electrical Specifications

- Power Supply 24 VAC, 150 mA class 2
- Environment
 - Temp. 0-50° C (32 - 112° F)
 - Humidity (non-condensing) 10 to 90%
- Noise suppression/IEC 60255-22-4 and 61000-4-2
- 16 Polarised Outputs 24 VAC and 2 binary inputs

Accessories/Options

- Controller Card KC-600
- Input Card (4) KC-621
- K600 Configuration and Lighting Control Software

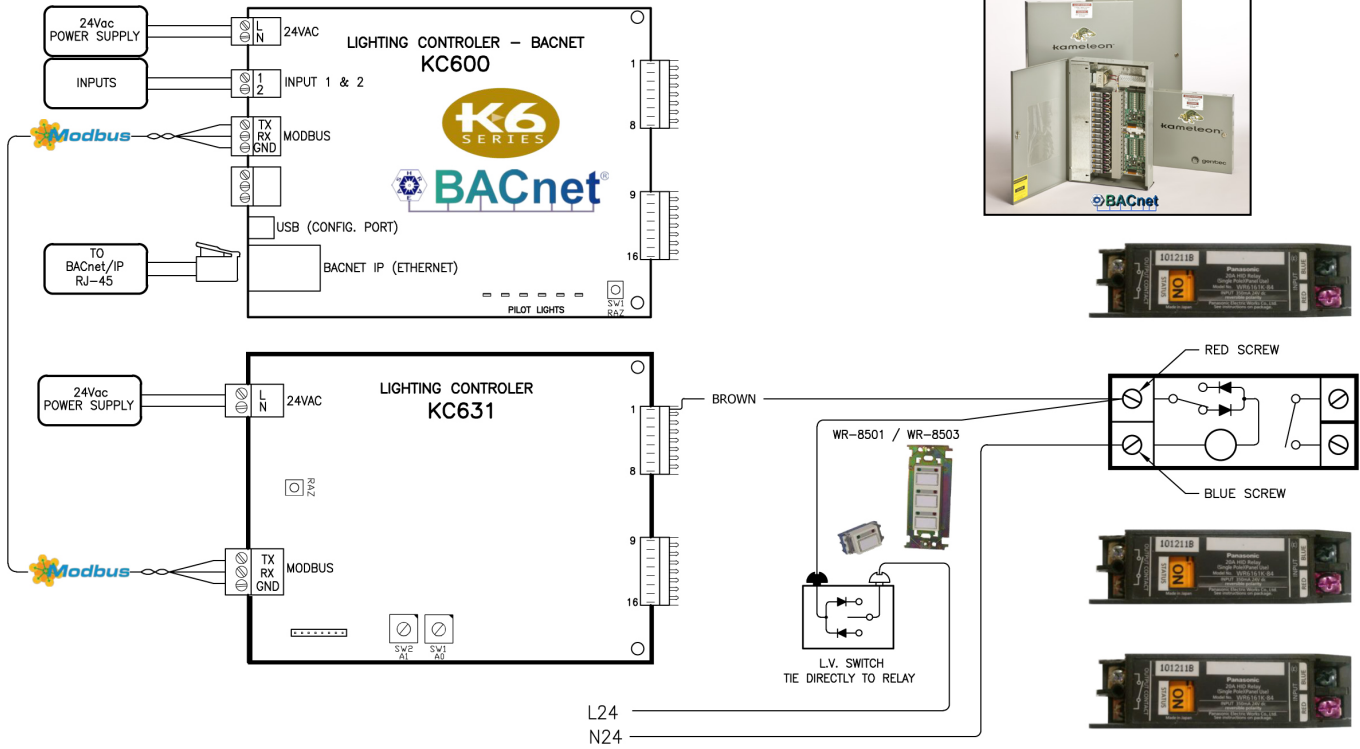


Native BACnet System

Project Name		Date
Project No.		



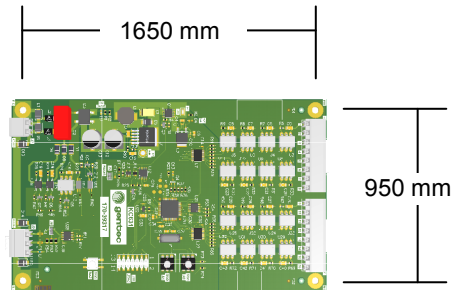
KC-631 - Low Voltage Lighting Control – BACnet Network



KC-631 - 16-Output Control 2-Wire Relay

Dimensions: 180 mm x 110 mm (7.0" x 4.3")

		Power Supply	Input	Output
KC-631	2 wires	18 to 24 VAC	--	(16) 24 VAC Polarised



kameleon
ADAPTABILITY IN LIGHTING CONTROL



Authorised Distributor

Ordering Information

39315-00	KC	-631
39953-xx	Complete Kit	
Part No.	Kameleon Series	BACnet K6 Series Controller