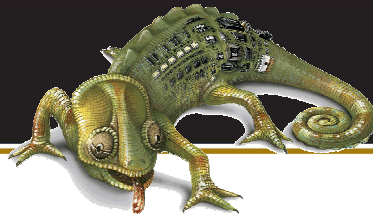




gentec



kameleon™  
ADAPTABILITY IN LIGHTING CONTROL

KC-401 Relay Controller

**General Description**

- Field Programmable Relay Controller
- 16-Output (20 A HID Relay Controller)
- Up to 4 groups (zones) Configuration
- 2 controllers can be networked and therefore controls up to 32 relays and 8 groups
- Multi-Group Relay Assignment Capability
- Real Time System Status Feedback Provided Through Different LED Patterns
- Membrane Keypad
- Push-Button Switch Tone
- Multiple Input Combination (4 devices):
  - Low Voltage 2-Wire Switch
  - Dry Contact
  - Occupancy Sensor
  - Time Clock
  - Photocell
  - Light Level Controller
- Energy Codes Certified Features:
  - Timed Schedules (when tied to a time clock)
  - Flick Warn
  - Time-ON Extension
  - Override Switching
  - ON only and OFF only
  - Photometric Controlled (when tied to a photocell)
  - Astronomical Controlled (when tied to a time clock)



**Specifications**

RS-485 Serial Communications between K4 Controllers	
Plastic Enclosure to Protect the Electronics	
Dimensions	4.2 in x 7.0 in (107 mm x 180 mm)

**Functional Characteristics**

- 16 Outputs to Control 2-Wires Relay
- Keypad for Field Programmability
- Local Override Possibility
- 4-Digital Inputs

**Electrical Specifications**

- Power Supply 24 Vac, 125 mA
- IEC Standards Compliance
  - IEC 60255-22-4: Fast Transient Disturbance Tests
  - IEC 61000-4-2: Electrostatic Discharge Immunity Test
- Environment
  - Temp. 0-50° C (32 - 122° F)

**Accessories/Options**

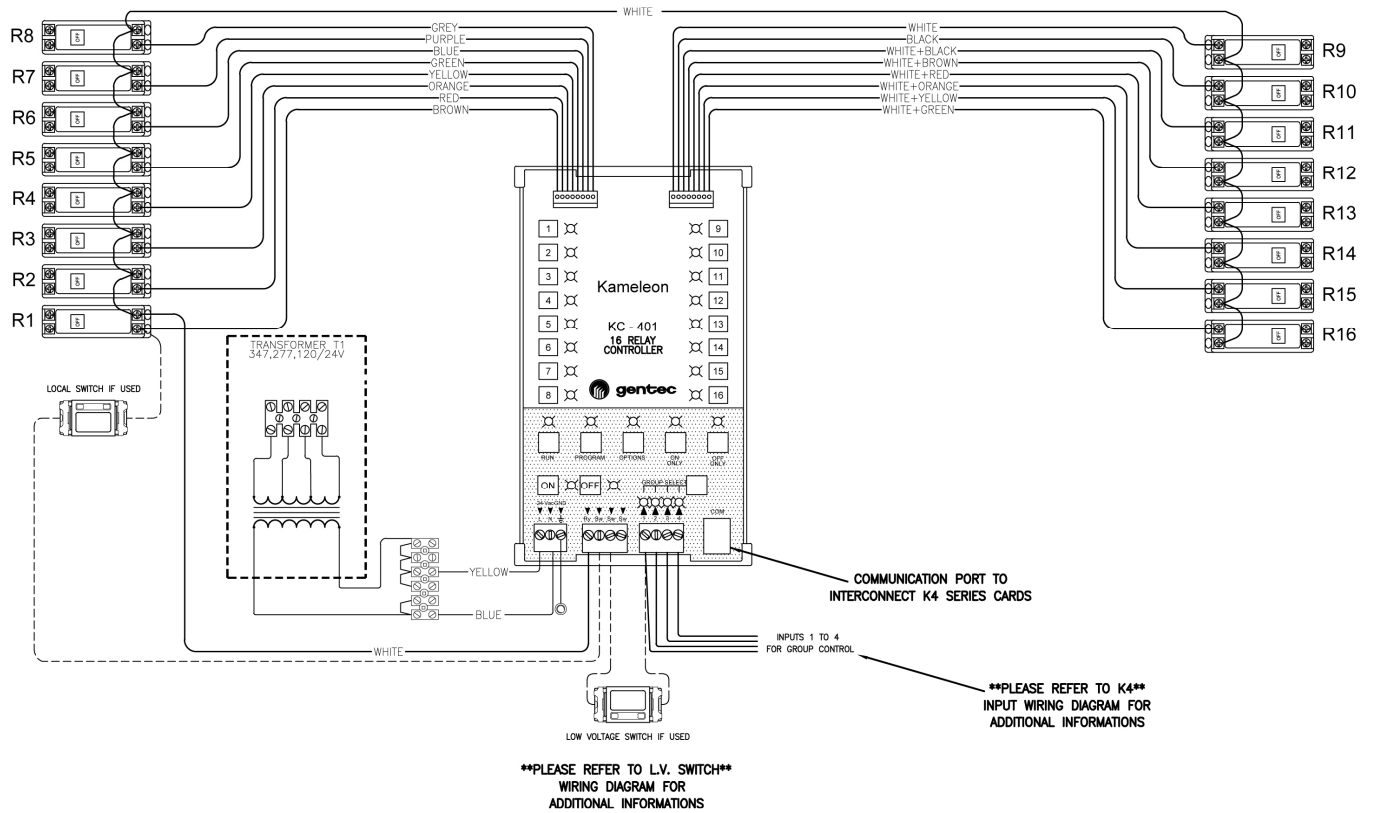
- Complete Kit with Installation Gear 39691-xx



Field Programming System

Project Name		Date
Project No.		





### Ordering Information

35459-01	KC	-401
39691-01	Complete Kit	
Part Number	Kameleon Series	Relay Controller K4 Series



**kameleon**  
ADAPTABILITY IN LIGHTING CONTROL

Authorised Distributor