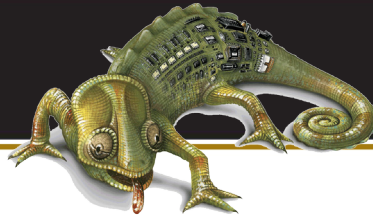




gentec

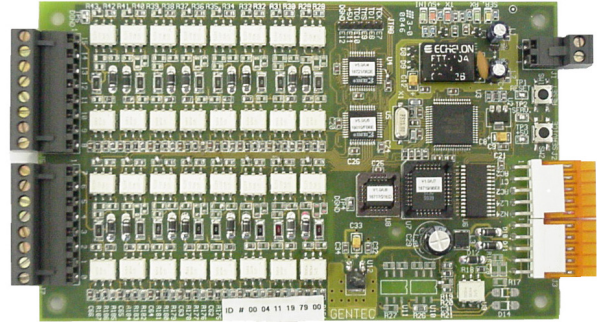


kameleon™
ADAPTABILITY IN LIGHTING CONTROL

KC-821 16-Input Controller

General Description

- Interfaces 8 Low Voltage Switches or 16 Dry Contacts.
- Simple Wiring. Uses a twisted pair for the network.
- Easy Programmable and Commissioning
- Uses LonWorks Network Communication



Specifications

Microprocessor	Echelon® 3150®
Output	8 Low Voltage Switches, with or without LED or 16 Dry Contacts
Transceiver	FTT-10A
Communication Network	LonWorks®, Echelon®, Pair of Twisted # 22 Wire
Distance	Up to 2700 meters (1000 ft) in bus mode and up to 500 meters (175 ft) in free topology, without repeater
Power Supply	24 Vac and 18 Vac, with mid-point tap
Terminal Blocks	Plug-in
Temperature	0 °C to 50 °C (32 °F to 122 °C)
Dimensions	110 mm x 180 mm (4.3 in x 7.0 in)
IEC Standards Compliance	IEC 60255-22-4: Fast Transient Disturbance Tests

Functional Characteristics

- Multiple Group Management
- Interoperable Function: Time-On Extension, Warming, On-Only, Off-Only
- Can be configured with LNS based tool (plugin available) or with Kameleon K8 software
- Can be configured for:
 - WR-8501 switches
 - Dry contact input
 - Occupancy sensor
- Compatible in all Kameleon Series Enclosures

Electrical Specifications

- Power Supply 24 Vac, 125 mA
- Environment
 - Temp. 0-50° C (32 - 112° F)
 - Humidity (non-condensing) 10 to 90%
- Noise Suppression
- IEC 60255-22-4 and 61000-4-2
- 16 Polarised Outputs 24 Vac

Accessories/Options

- K800 Configuration and Visualization Software

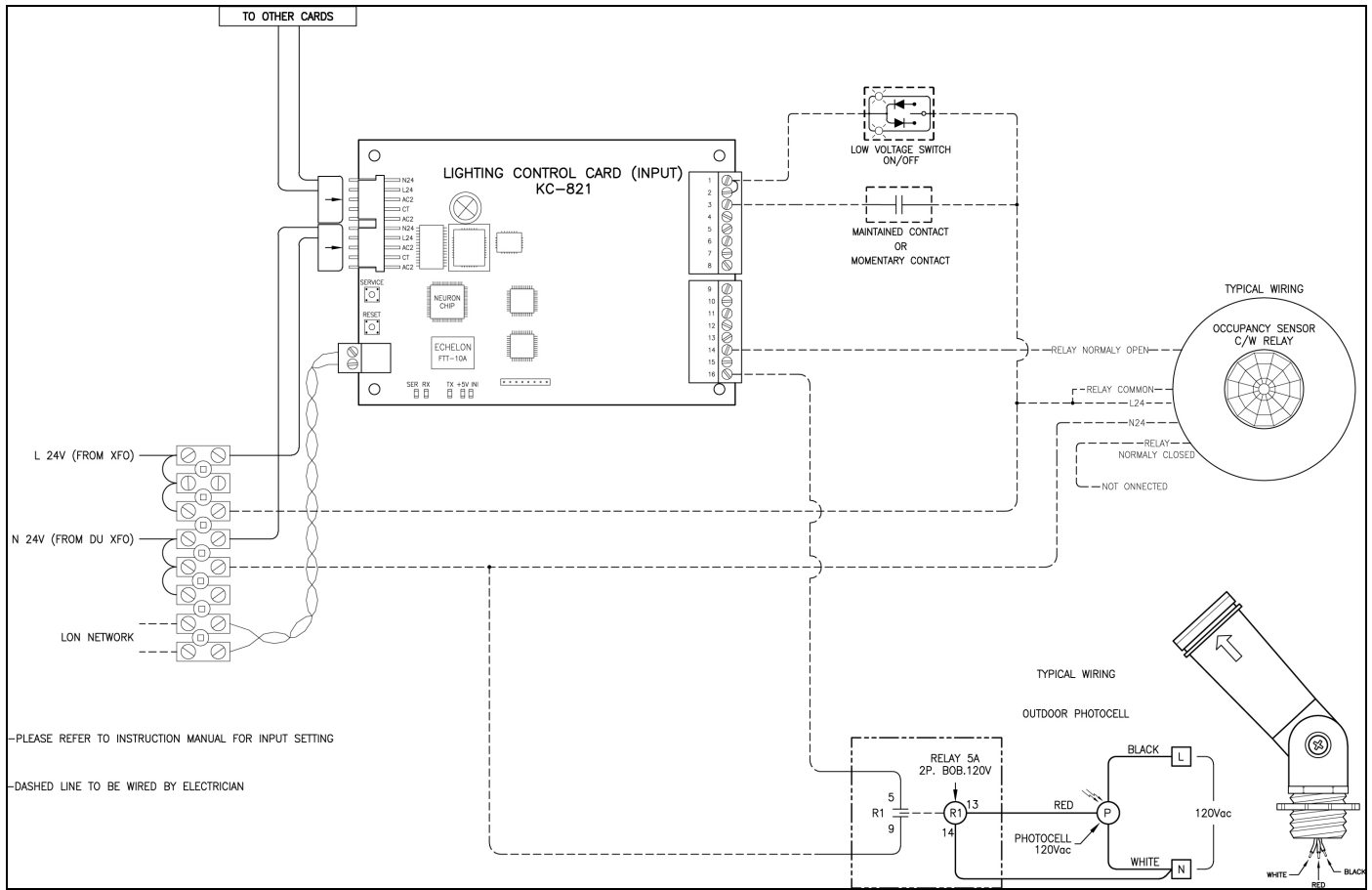


Echelon Based System

Project Name		Date
Project No.		



Wiring Diagram



Ordering Information

36317-02	KC	-821
39681-01	Complete Kit	-821
Part No.	Kameleon Card	K8 Series Input Controller



Authorised Distributor

