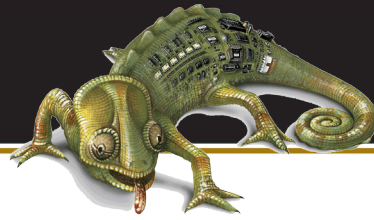




gentec



kameleon™  
ADAPTABILITY IN LIGHTING CONTROL

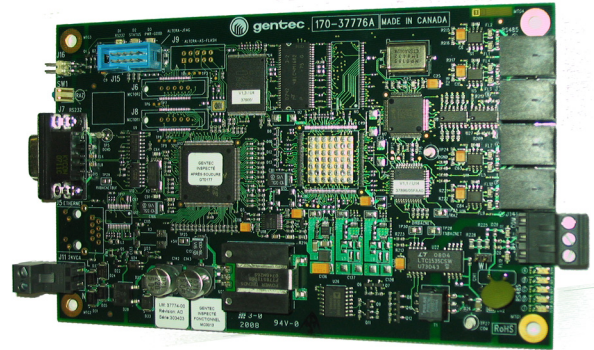
KC-601 BACnet Interface

### General Description

The KC-601 interface is a Native BACnet application controller that communicates on a BACnet MS/TP RS-485 LAN. The controller is designed for lighting control applications in accordance with the KC-401 series controller. The KC-601 provide a complete relay panel control from 8 to 64 lighting control relays with parallel control devices as switches, motion detectors, BAS, etc.



- Field Programmable KC-601 Controller
- 4-Output RS-485 LAN @ 9600, 19200, 38400, 11520 bds
- Support up to 4 Groups (KC-401) Configuration
- A KC-601 can be networked with a KC-401 Relay Controller to control up to 64 relays and 4 groups
- Multi-Group Relay Assignments Capability
- Multiple Output Combinations (4 Devices):
  - KC-401 Sequencer Control Complying:
    - Photocell (Indoor and Outdoor)
      - Dedicated Inputs (2)
  - Inputs
    - (1) RS-485 BACnet LAN Port
    - (1) RS-232 Port for PC
    - (1) Push-Button Reset
    - (1) BACnet Communication Status LED
    - (3) Programming Status LED Indicators
    - 24 Vac Supply
  - Outputs
    - (4) RS-485 Communications Ports
    - (3) RS-485 Communication LED Indicators



### Specifications

Protocol	BACnet MS/TP Serial Communication Between KC-601 & KC-401
----------	--

#### Functional Characteristics

- The KC-601 is a BACnet MS/TP device that allows KC-401 sequencer to send and receive BACnet commands to or from BAS.
- The KC-601 interface uses RS-485 networking technology that uses Native BACnet MS3TP protocol.
- Building Management System (BAS) can configure and program from their database all of the functions inherent in the KC-601 BACnet node and KC-401 sequencer.
- The KC-601 conforms to the open Native BACnet variable for lighting control.
- The KC-601 allows programming, control and monitoring up to (4) KC-401 sequencer of 16-relay group each.
- The KC-601 allows control and monitoring of 60 relays individually.
- The KC-601 allows control and monitoring of 16 multiple contacts devices as switches, time clock, occupancy and light sensors.

#### Electrical Specifications

- Power Supply 24 Vac, 125 mA, Class 2
- IEC Standards Compliances
  - IEC 60255-22-4: Fast Transient Disturbance Tests
  - IEC 61000-4-2: Electrostatic Discharge Immunity Test
- Environment
  - Temp. 0-50° C (32 - 122° F)
  - Humidity (non-condensing) 10 to 90%

#### Accessories/Options

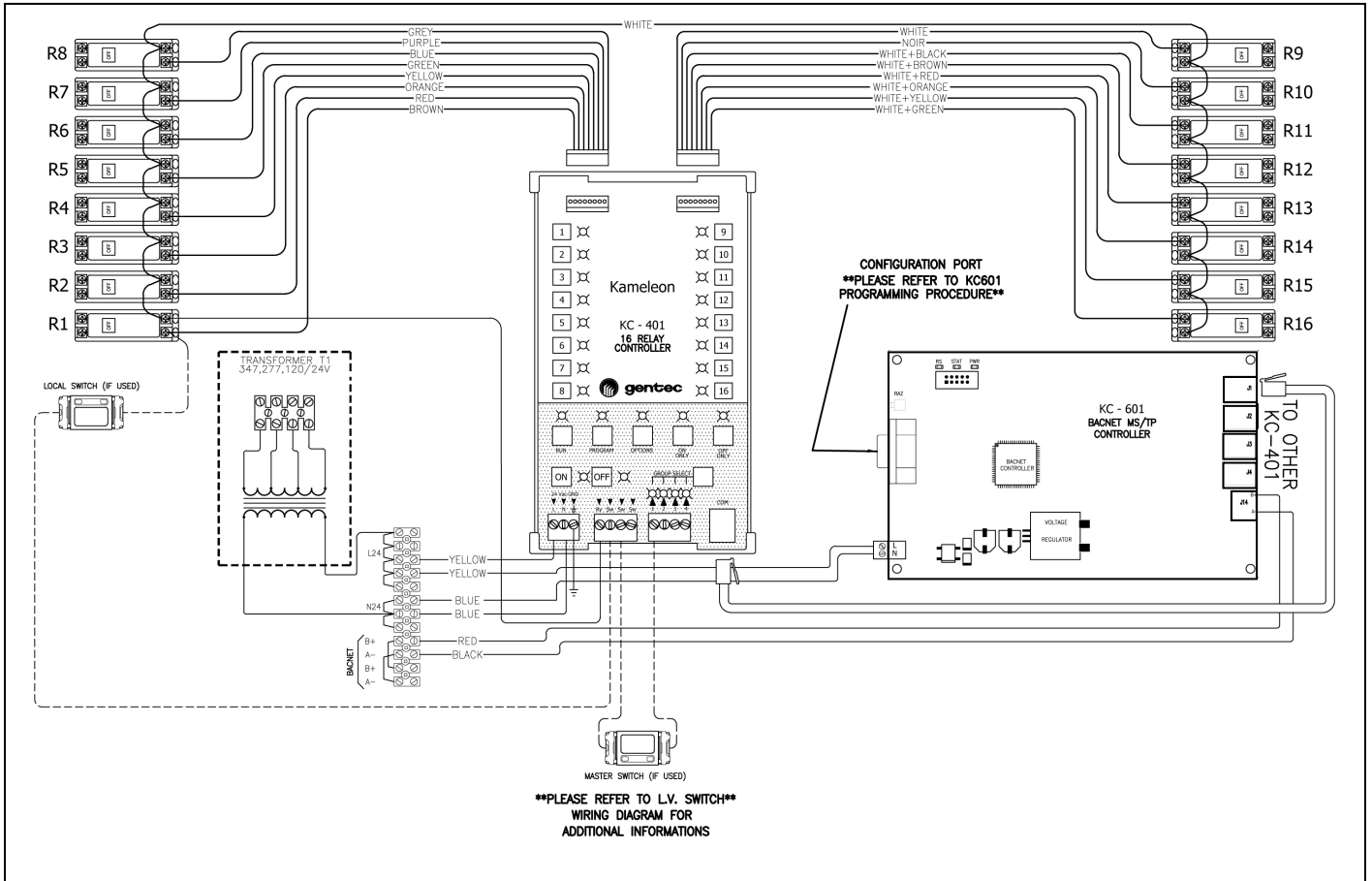
- Installation Kit



Native BACnet System

Project Name		Date
Project No.		





**Dimensions:** 107 mm x 180 mm (4.2" x 7.0")

### Ordering Information

37774-00	KC	-601
39689-01	Complete Kit	
Part Number	Kameleon Series	BACnet Interface K6 Series



**kameleon**  
ADAPTABILITY IN LIGHTING CONTROL

Authorised Distributor