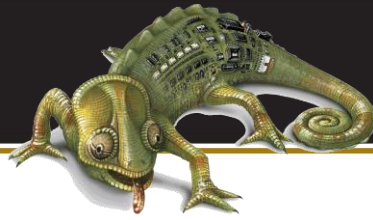




gentec



kameleon™
ADAPTABILITY IN LIGHTING CONTROL

KC-83x Output Controller

General Description

- Part Numbers:
 - KC-831 (Two-Wire Relay Controller)
 - KC-832 (Three-Wire Relay Controller)
 - KC-833 (Breaker-Relay Controller)
- Simple Wiring. Uses a twisted pair for the network.
- Easy Programmable and Commissioning
- Uses LonWorks Network Communication



Application

Larger scale low voltage lighting control based on LonWorks network with possibility of interoperability with automation network. With Kameleon K800 software, those cards can be used as a standalone system.



Technical Characteristics

KC-831 uses FTT-10A transceiver to communicate on a LON twisted pair network (CEA-709) with other K8 devices or with any other LON devices.

Specifications

Microprocessor	Echelon® 3150®
Output	16 Two-Wire or Solid State Relays, 8 Three-Wire Relays or Breaker Relays
Transceiver	FTT-10A
Communication Network	LonWorks®, Echelon®, Pair of Twisted # 22 Wire
Distance	Up to 2700 meters (1000 ft) in bus mode and up to 500 meters (175 ft) in free topology, without repeater
Power Supply	24 Vac and 18 Vac, with mid-point tap
Terminal Blocks	Plug-in/Screws
Temperature	0 °C to 50 °C (32 °F to 122 °C)
Dimensions	110 mm x 180 mm (4.3 in x 7.0 in)
IEC Standards Compliance	IEC 60255-22-4: Fast Transient Disturbance Tests

Functional Characteristics

- Multiple Group Management
- Interoperable Function: Time-On Extension, Warning, On-Only, Off-Only
- Must be commissioned with a LNS based tool
- 16-Group Controller Available
- Can be configured with LNS based tool (plugin available) or with Kameleon K8 software
- Each output can read the state of the relay
- Compatible in all Kameleon Series Enclosures

Electrical Specifications

- Power Supply 24 Vac, 125 mA
- Environment
 - Temp. 0-50° C (32 - 112° F)
 - Humidity (non-condensing) 10 to 90%
- Noise Suppression
- IEC 60255-22-4 and 61000-4-2
- 16 Polarised Outputs 24 Vac

Accessories/Options

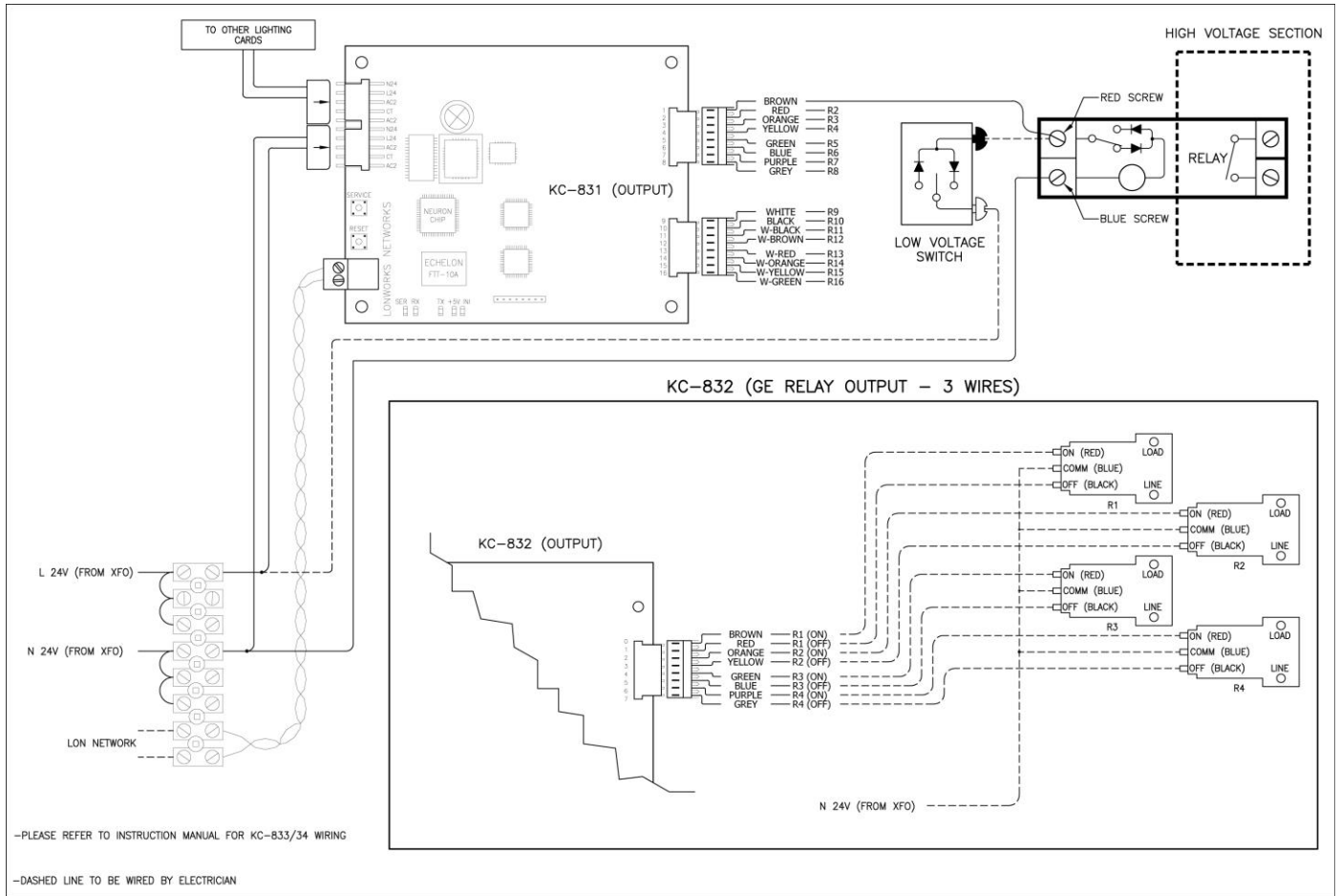
- K800 Configuration and Visualization Software



Echelon Based System

Project Name		Date
Project No.		





Ordering Information

36317-01	KC	-831
39688-01	Complete Kit	-831
36317-03	KC	-832
39688-02	Complete Kit	-832
36317-05	KC	-833
Part No.	Kameleon Card	K8 Series Output Controller



Authorised Distributor

