

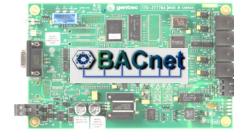
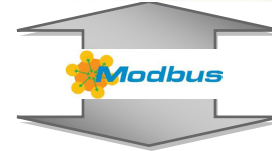
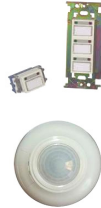
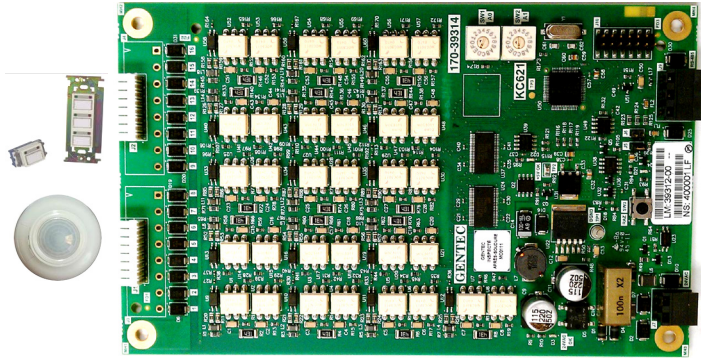
**General Description**

- The input lighting control card KC-621 is designed to control a range of 16 low voltage switches and occupancy sensors or dry contact management.
- The design and construction uses Modbus to enable intercommunication between the (4) input cards, (4) output cards & (1) Native BACnet KC-600 control card assembled in the same low voltage lighting control panel.
- RS-485 (1) connector allowing connections to an internal Modbus network.
- Manual address via rotary switch: Each card comes with two selectors.
- The KC-621 supports the management of 16 inputs such as:
  - Dry Contact, low voltage switches ON/OFF
  - Occupancy sensor or photocell
  - BAS

**Application**

Linked to the Native BACnet KC-600 the KC-621 input cards assure programmable inputs for all ON/OFF commands generated by the switches or occupancy sensors connected. Each control point linked to the inputs allows the management of the overall low voltage lighting control system. Each of the K600 BACnet control cards reads and transmits the status of each input in real time:

- management of groups and inputs
- input status management



BACnet KC-600 "Native" Controller

**Specifications**

Protocol	Modbus - RTU – RS-485
Network	RS-485/Modbus to addresses (0-255)
Communication Status	Individual indicator lamps

**Functional Characteristics**

- Programmable input management (16)
- 16-digital inputs for management control:
  - Room Switches (16)
  - Occupancy Sensors
  - Photocells
- Internal Modbus Network
- Multiple Group Assignment
- Control ON/OFF including "Relinquish"

**Electrical Specifications**

- Power Supply 24 VAC, 150 mA class 2
- Environment
  - Temp. 0-50° C (32 - 112° F)
  - Humidity (non-condensing) 10 to 90%
- Noise suppression/IEC 60255-22-4 et 61000-4-2
- 16-Digital Inputs (Dry Contacts)

**Accessories/Options**

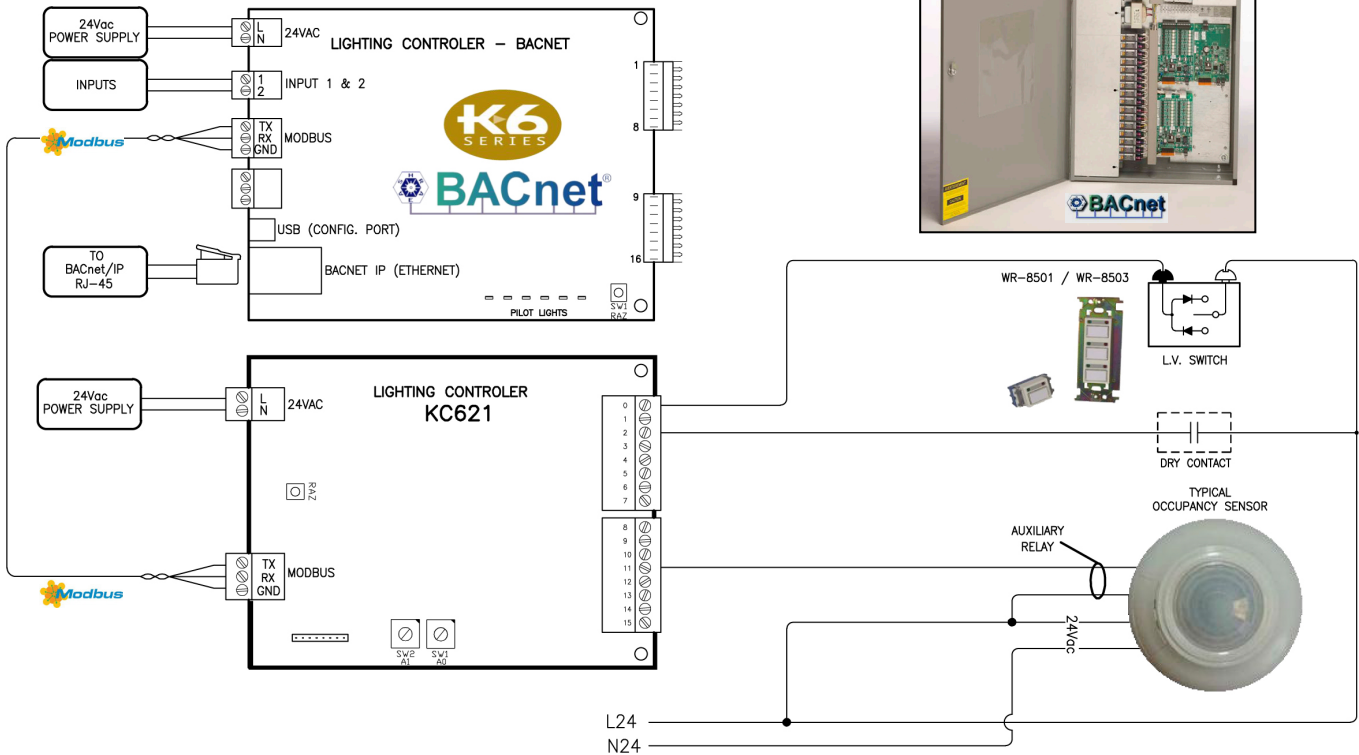
- 2-Wire Switch
- Occupancy Sensors and Photocells
- K600 Configuration & Lighting Control Software



Project Name		Date
Project No.		

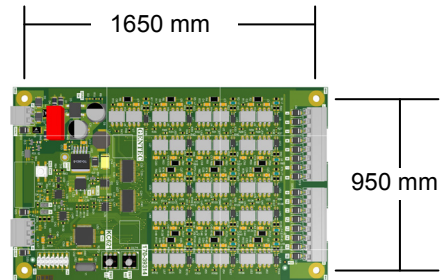


**KC-621 - Low Voltage Lighting Control – Modbus RTU Network in Lighting Control Cabinet**



**KC-621 - 16 Inputs Lighting Control Card**

Dimensions: 180 mm x 110 mm (7.0" x 4.3")			
	Power Supply	Input	Output
KC-621	18 to 24 VAC	Dry Contact	--



**Ordering Information**

39312-00	KC	-621
39952-xx	Complete Kit	
Part No.	Kameleon Card	BACnet K6 Series Controller



Authorised Distributor