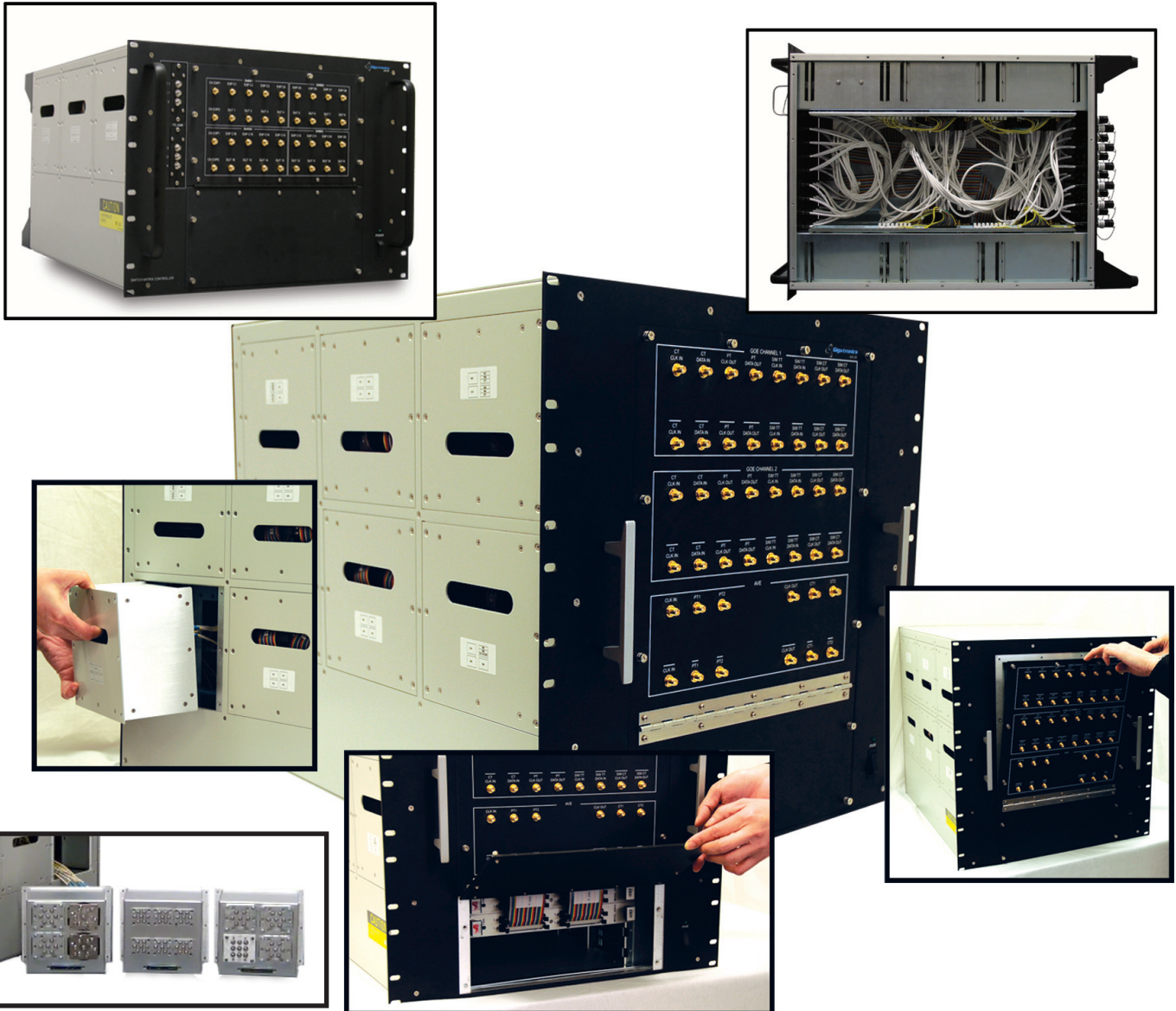


## Modular Solutions

Giga-tronics Modular solutions are about Serviceability and Scalability. The modular boxes contain the replaceable components. This solution provides the lowest Mean Time to Repair on the Market.



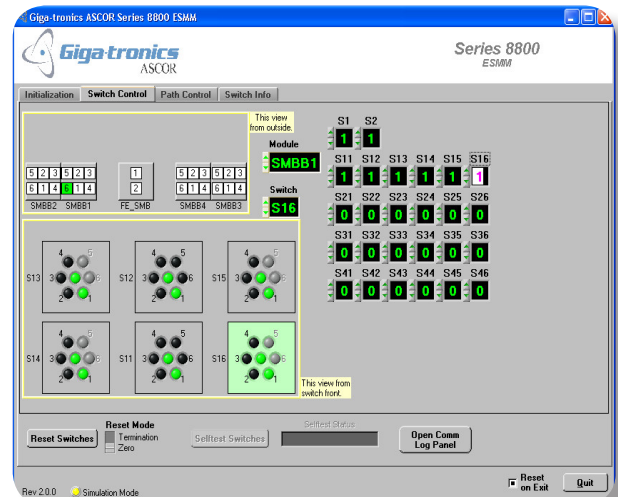
## Key Features

- ❑ **Front/Rear Doors**– fold down for easy access to internal RF Cabling, easily replaced when re-tasking the box.
- ❑ **Removable Top Cover** – Allows access to internal cabling. (photo to the right)
- ❑ **Center Section** – Intended for running RF cabling with minimal bends to reduce insertion loss, but also provides ample space for RF Components such as Directional Couplers, Mixers, etc.
- ❑ **Modular Boxes** – Once RF cabling is disconnected, the boxes can be replaced quickly to put the system back into service, and the defective component in the box can be repaired offline.
- ❑ **Control Modules** – The lower portion of the chassis contains a four slot chassis to hold Giga-tronics 3000 Series Switching cards. These are typically used to control internal Relays and components, but can be used for other Lower Frequency applications in the System.



## Software Features

- ❑ **Point and click and the software closes the appropriate relays.**
- ❑ **Relay closure counter for preventative maintenance.**
- ❑ **Path storage and recall to simplify test development.**
- ❑ **Manual control with position indicator lights for troubleshooting.**



## RF Switches

Although the front panels can be modified to accommodate a variety of Switch Manufacturers, Giga-tronics recommends the highest quality relays with the following general specifications:

- ❑ 4, 8, 12, 18, 26, 40 GHz Freq Ranges
- ❑ Amplitude Repeatability 0.03 dB
- ❑ 10 Million Switching Cycles
- ❑ Insertion Loss 0.5 dB (18 GHz)
- ❑ Isolation 60 dB (18 GHz)
- ❑ VSWR 1.5 (18 GHz)
- ❑ Max Power 100W (18 GHz)

