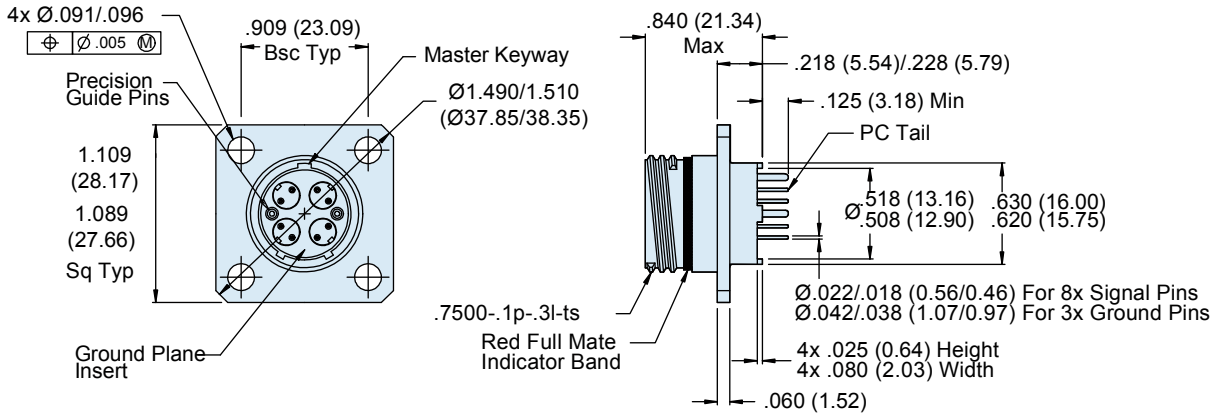




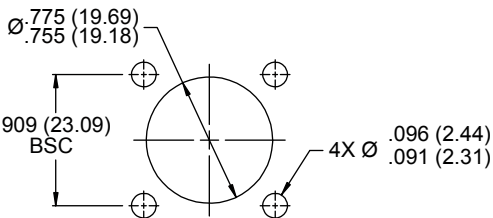
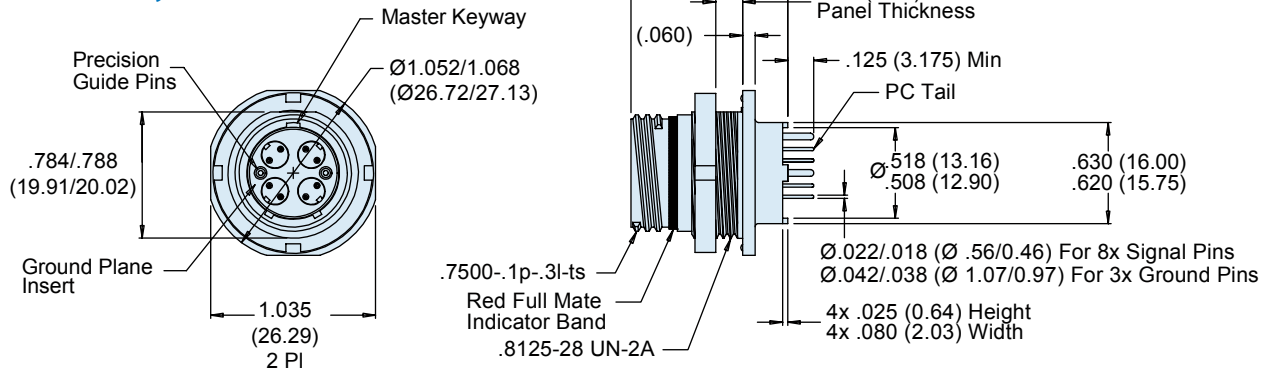
Series 805 Mighty Mouse Triple-Start ACME Thread CAT-MASTER™ 10Gbase-T CAT 6 & 7 PCB Receptacle 805-111 Dimensions

Size 12 ground plane insert receptacle, 100 ohm matched impedance

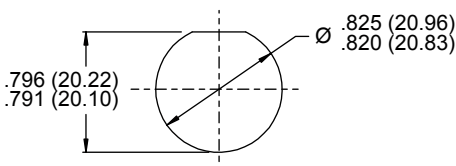
Square Flange - Shell Style 02



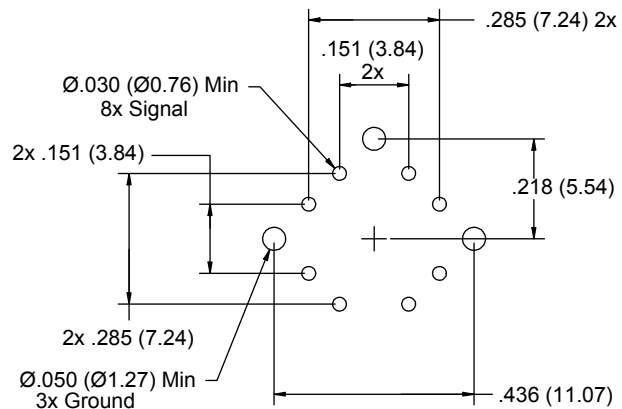
Jam Nut - Shell Style 02



-02 Shell Style Recommended Panel Cutout



-07 Shell Style Recommended Panel Cutout



PCB Hole Pattern

Dimensions in Inches (millimeters) are subject to change without notice.