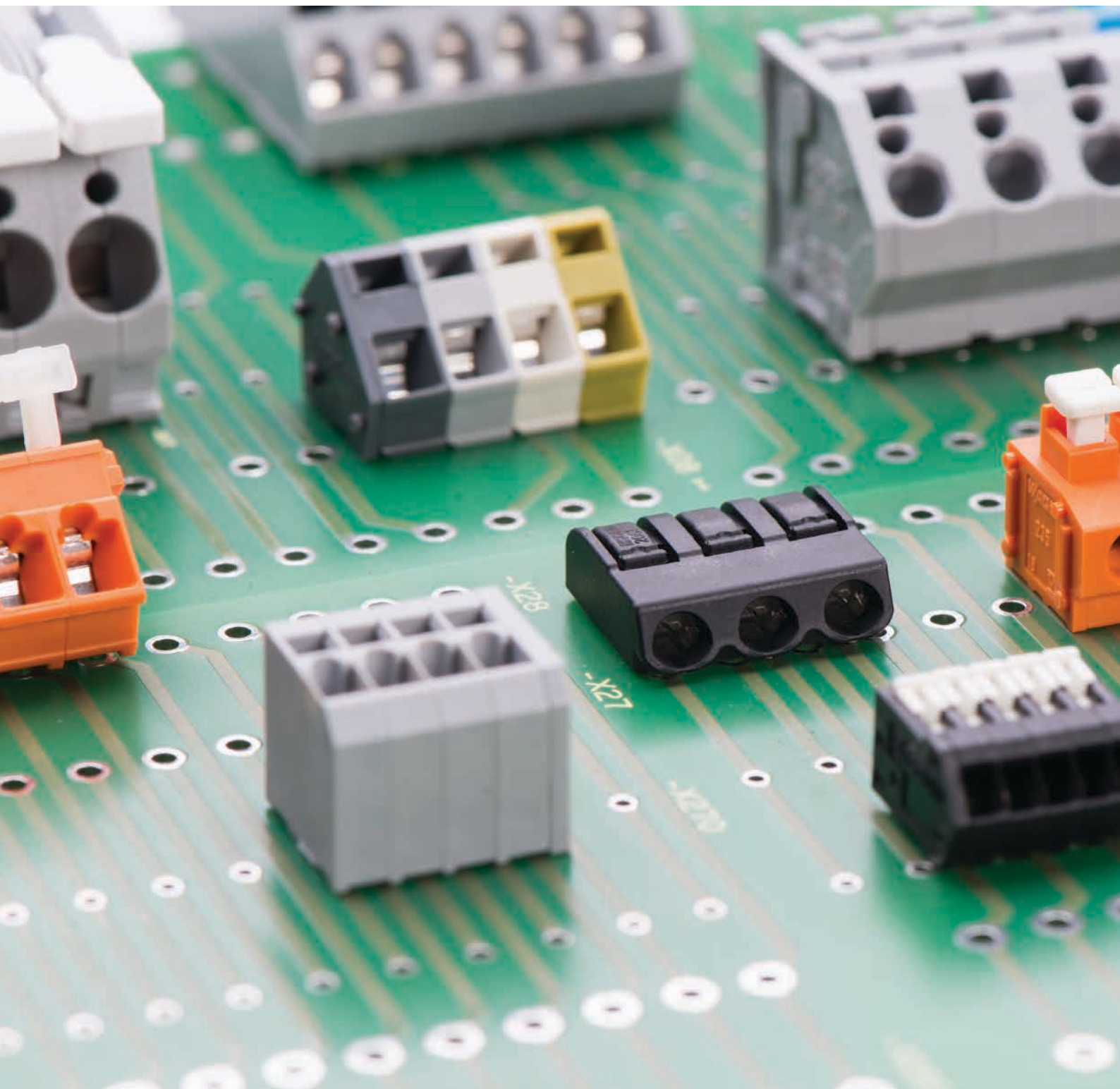


PCB Terminal Blocks

Product Overview



AT A GLANCE: THE ENTIRE RANGE

Variants	Terminal blocks, terminal strips (double-, triple-, quadruple-deck terminal strips), disconnect terminal blocks for test and measurement, fuse terminal blocks, modular PCB connectors, modular terminal blocks with optional or internal commoning
Pin spacing	2.5 ... 20 mm
PCB mounting styles	Through-Hole Technology (THT), Through-Hole Reflow (THR) Surface-Mount Technology (SMT) and Press-In Technology
Conductor types	Solid, stranded, fine-stranded and ferruled conductors
Conductor range	0.08 ... 16 mm ² (28 ... 6 AWG)
Conductor entry angles	0°, 30°, 40°, 45° and 90°
Termination and actuation options	Push-in termination, actuation via operating tool, push-buttons, finger-operated levers, locking slides and actuating levers

Connection Technologies and Operation



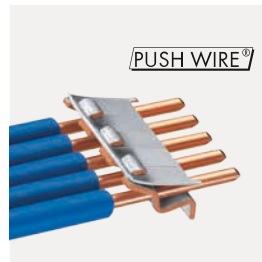
The universal connection for solid, stranded and fine-stranded conductors

To Use:
Open clamping unit, insert the conductor, release clamp — done!



The universal connection with an additional advantage: Push-in connection

To Use:
Open clamping unit, insert the conductor, release clamp — done!
Terminate both solid and ferruled conductors by simply pushing them in — no operating tool needed.



PUSH WIRE® connection for solid and stranded conductors (depending on model used)

To Use:
Tool-free, twist-free terminations for solid and rigid stranded conductors — simply push into the unit.



Insulation Displacement Connection (IDC)

To Use:
Push unstripped conductor into the IDC contact using an operating tool.

RoHS compliant

Through-Hole Technology

Wave soldering is the most popular method of soldering PCBs. WAGO offers a wide range of terminal blocks with various pin spacings.

Through-Hole Reflow

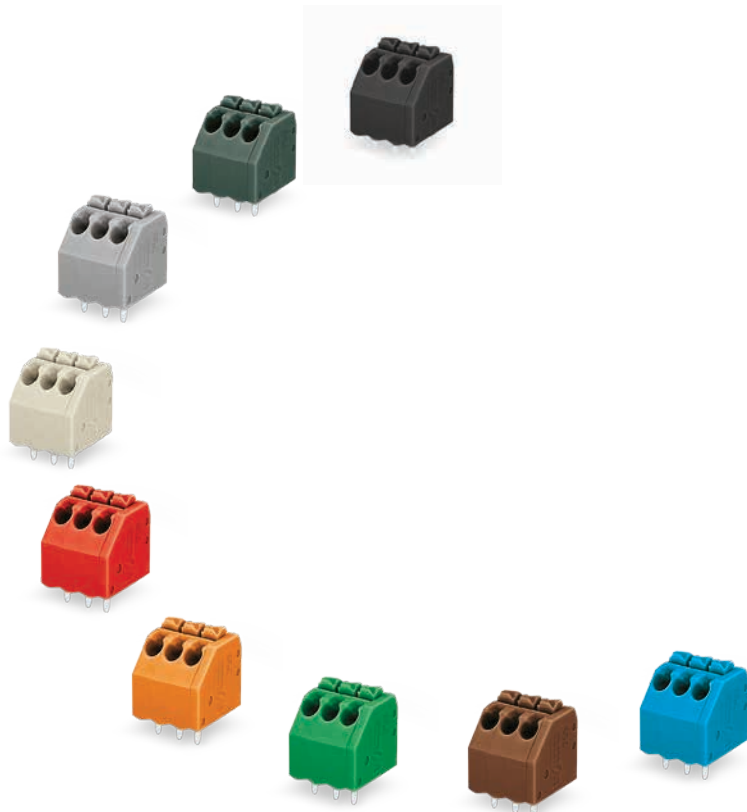
Reflow soldering is the standard method for soldering surface-mount components. WAGO THR products and surface-mount components can be placed together on the PCB and soldered during the same reflow soldering process.

Surface-Mount Technology

Surface-Mount Technology (SMT) is a process in which components are only mounted on the surface of PCBs. The components are automatically positioned so that the terminal contacts are located on the PCB's solder surfaces that have been previously coated with solder paste. Then the assembled PCBs are run through the reflow soldering process.

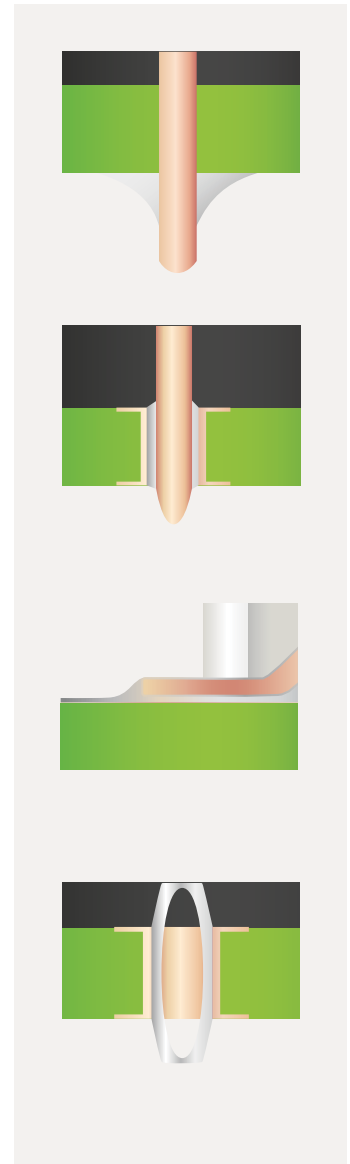
Press-In-Technology

Press-in technology provides solder-free pin connections. Specially designed press-in pins ensure both low press-in forces and high retention forces for WAGO PCB terminal blocks. Their elastic press-in zones protect the PCBs while ensuring a solid contact point.



Colors: black, dark gray, gray, light gray, red, orange, green, brown, blue

The availability of these, and other colors, depends on the series and quantity required



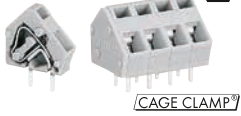
PCB TERMINAL BLOCKS

Product Overview Sorted by Pin Spacing

2.5 mm, 2.54 mm	3 mm	3.5 mm, 3.81 mm	3.96 mm, 4 mm	
<p>233 Series</p>  <p>CAGE CLAMP</p> <p>0.08 ... 0.5 mm² / 28 ... 20 AWG 233-105</p>	<p>2059 Series</p>  <p>SMT</p> <p>PUSH WIRE</p> <p>0.14 ... 0.5 mm² / 26 ... 20 AWG** 2059-301/998-403 „solid“</p>	<p>739 Series</p>  <p>CAGE CLAMP</p> <p>0.08 ... 1.5 mm² / 28 ... 14 AWG 739-305</p>	<p>739 Series</p>  <p>CAGE CLAMP</p> <p>0.08 ... 1.5 mm² / 28 ... 14 AWG 739-312/100-000</p>	<p>2060 Series</p>  <p>4</p> <p>THR</p> <p>PUSH-IN CAGE CLAMP</p> <p>0.2 ... 0.75 mm² / 24 ... 18 AWG 2060-1472/998-404</p>
<p>218 Series</p>  <p>CAGE CLAMP</p> <p>0.08 ... 0.5 mm² / 28 ... 20 AWG 218-104</p>		<p>235 Series</p>  <p>3.81</p> <p>PUSH-IN CAGE CLAMP</p> <p>0.5 ... 1.5 mm² / 20 ... 16 AWG 235-135</p>	<p>2060 Series</p>  <p>4</p> <p>THR</p> <p>PUSH-IN CAGE CLAMP</p> <p>0.2 ... 0.75 mm² / 24 ... 18 AWG 2060-1452/998-404</p>	
<p>218 Series</p>  <p>THR</p> <p>CAGE CLAMP</p> <p>0.08 ... 0.5 mm² / 28 ... 20 AWG 218-104/000-604</p>		<p>805 Series</p>  <p>3.5</p> <p>PUSH-IN CAGE CLAMP</p> <p>0.2 ... 1.5 mm² / 24 ... 16 AWG 805-106</p>	<p>2060 Series</p>  <p>4</p> <p>SMT</p> <p>PUSH-IN CAGE CLAMP</p> <p>0.2 ... 0.75 mm² / 24 ... 18 AWG 2060-472/998-404</p>	
<p>233 Series</p>  <p>CAGE CLAMP</p> <p>0.08 ... 0.5 mm² / 28 ... 20 AWG 233-205</p>		<p>250 Series</p>  <p>3.5</p> <p>PUSH-IN CAGE CLAMP</p> <p>0.2 ... 1.5 mm² / 24 ... 16 AWG 250-105</p>	<p>2060 Series</p>  <p>4</p> <p>SMT</p> <p>PUSH-IN CAGE CLAMP</p> <p>0.2 ... 0.75 mm² / 24 ... 18 AWG 2060-452/998-404</p>	
<p>234 Series</p>  <p>CAGE CLAMP</p> <p>0.08 ... 0.5 mm² / 28 ... 20 AWG 234-208</p>		<p>251 Series</p>  <p>3.5</p> <p>FIT CLAMP</p> <p>PUSH WIRE</p> <p>0.5 ... 1.5/1.0 mm² / 20 ... 16/18 AWG 251-107 und 251-303 "solid"</p>	<p>235 Series</p>  <p>3.81</p> <p>PUSH WIRE</p> <p>0.5 ... 1.5 mm² / 20 ... 16 AWG 235-105/330-000 "solid"</p>	
<p>250 Series</p>  <p>PUSH-IN CAGE CLAMP</p> <p>0.2 ... 0.5 mm² / 24 ... 20 AWG 250-412</p>		<p>744 Series</p>  <p>3.5</p> <p>PUSH WIRE</p> <p>0.5 ... 1.5 mm² / 20 ... 16 AWG 744-304 "solid"</p>	<p>235 Series</p>  <p>PUSH-IN CAGE CLAMP</p> <p>0.5 ... 1.5 mm² / 20 ... 16 AWG 235-205</p>	
<p>250 Series</p>  <p>THR</p> <p>2.5</p> <p>PUSH-IN CAGE CLAMP</p> <p>0.2 ... 0.5 mm² / 24 ... 20 AWG 250-406/350-604</p>		<p>735 Series</p>  <p>3.81</p> <p>PUSH WIRE</p> <p>0.5 ... 1.5 mm² / 20 ... 16 AWG 735-127 "solid"</p>		

5 mm, 5.08 mm

236 Series



CAGE CLAMP®

236 Series



CAGE CLAMP®

745 Series



CAGE CLAMP®

816 Series



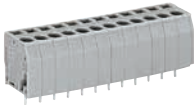
PUSH-IN CAGE CLAMP®

0.08 ... 2.5 mm² / 28 ... 12 AWG*
236-404
739 Series

0.08 ... 2.5 mm² / 28 ... 12 AWG*
236-406/334-604
739 Series

0.08 ... 4 mm² / 28 ... 12 AWG
745-3104
740 Series

2 x 0.2 ... 1.5 mm² / 2 x 24 ... 16 AWG
816-105
804 Series



CAGE CLAMP®



CAGE CLAMP®



CAGE CLAMP®



PUSH-IN CAGE CLAMP®

0.08 ... 2.5 mm² / 28 ... 12 AWG*
739-112
Disconnect/Test Terminal Blocks,
742 Series

0.08 ... 2.5 mm² / 28 ... 12 AWG*
739-112/100-000
Terminal Blocks with Jumper
Slot, 742 Series

0.08 ... 2.5 mm² / 28 ... 12 AWG*
740-105
Fuse Terminal Blocks,
742 Series

0.25 ... 2.5 mm² / 22 ... 12 AWG
804-105
735 Series



CAGE CLAMP®



CAGE CLAMP®



CAGE CLAMP®



PUSH WIRE®

0.08 ... 2.5 mm² / 28 ... 12 AWG*
742-101
736 Series

0.08 ... 2.5 mm² / 28 ... 12 AWG*
742-121
737 Series

0.08 ... 2.5 mm² / 28 ... 12 AWG*
742-116
738 Series

0.5 ... 1.5 mm² / 20 ... 16 AWG
735-307 "solid"



CAGE CLAMP®



CAGE CLAMP®



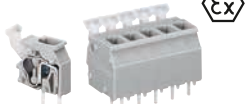
CAGE CLAMP®

0.08 ... 2.5 mm² / 28 ... 12 AWG*
736-106
255 Series

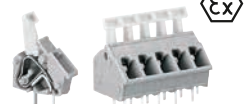
0.08 ... 2.5 mm² / 28 ... 12 AWG*
737-106
256 Series

0.08 ... 2.5 mm² / 28 ... 12 AWG*
738-108
257 Series

6 mm
2061 Series



CAGE CLAMP®



CAGE CLAMP®



CAGE CLAMP®



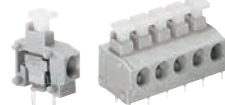
PUSH-IN CAGE CLAMP®

0.08 ... 2.5 mm² / 28 ... 12 AWG*
255-405
235 Series

0.08 ... 2.5 mm² / 28 ... 12 AWG*
256-405
250 Series

0.08 ... 2.5 mm² / 28 ... 12 AWG*
257-405
250 Series

0.5 ... 1.5 mm² / 20 ... 16 AWG
2061-602/998-404
2061 Series



PUSH-IN CAGE CLAMP®



PUSH-IN CAGE CLAMP®



PUSH-IN CAGE CLAMP®



PUSH-IN CAGE CLAMP®

0.5 ... 1.5 mm² / 20 ... 14 AWG
235-405/331-000
235 Series

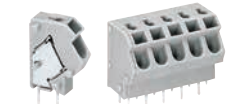
0.5 ... 1.5 mm² / 20 ... 14 AWG
250-513
254 Series

2 x 0.5 ... 1.5 mm² / 20 ... 14 AWG
250-704
253 Series

0.5 ... 1.5 mm² / 20 ... 16 AWG
2061-622/998-404
2061 Series



PUSH WIRE®



PUSH WIRE®



PUSH WIRE®



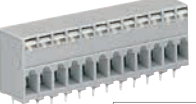
PUSH-IN CAGE CLAMP®

0.5 ... 2.5 mm² / 20 ... 14 AWG
235-405 "solid"
Feedthrough Terminal Blocks,
741 Series

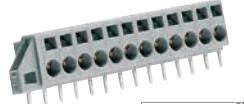
0.5 ... 2.5 mm² / 20 ... 12 AWG*
254-455 "solid"
Feedthrough Terminal Blocks,
231 Series

2 x 0.5 ... 1.5 mm² / 2 x 20 ... 16 AWG
253-105 "solid"

0.5 ... 1.5 mm² / 20 ... 16 AWG
2061-1602/998-404
2061 Series



CAGE CLAMP®



CAGE CLAMP®



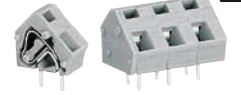
PUSH-IN CAGE CLAMP®

0.08 ... 2.5 mm² / 28 ... 12 AWG*
741-112

0.08 ... 2.5 mm² / 28 ... 12 AWG*
231-612/023-000

0.5 ... 1.5 mm² / 20 ... 16 AWG
2061-1622/998-404

236 Series



CAGE CLAMP®

745 Series

0.08 ... 2.5 mm² / 28 ... 12 AWG*
236-503
739 Series

0.08 ... 4 mm² / 28 ... 12 AWG*
745-3153
739 Series



CAGE CLAMP®

0.08 ... 2.5 mm² / 28 ... 12 AWG*
739-206
745 Series

0.08 ... 2.5 mm² / 28 ... 12 AWG*
739-206/1
745 Series



CAGE CLAMP®

0.2 ... 4 mm² / 28 ... 12 AWG
745-154
736 Series

0.2 ... 6 mm² / 28 ... 12 AWG
745-304
737 Series



CAGE CLAMP®

0.08 ... 2.5 mm² / 28 ... 12 AWG*
736-505
255 Series

0.08 ... 2.5 mm² / 28 ... 12 AWG*
737-506
256 Series



CAGE CLAMP®

0.08 ... 2.5 mm² / 28 ... 12 AWG*
255-504
235 Series

0.08 ... 2.5 mm² / 28 ... 12 AWG*
256-503
250 Series



PUSH-IN CAGE CLAMP®

0.5 ... 1.5 mm² / 20 ... 14 AWG
235-503/331-000
2706 Series

0.5 ... 1.5 mm² / 20 ... 14 AWG
250-606
2706 Series



CAGE CLAMP®

0.5 ... 6 mm² / 20 ... 10 AWG
2706-104
235 Series

0.5 ... 6 mm² / 20 ... 10 AWG
2706-154
254 Series

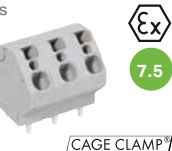


PUSH WIRE®

0.5 ... 2.5 mm² / 20 ... 14 AWG
235-503 "solid"

0.5 ... 2.5 mm² / 20 ... 14 AWG
254-554 "solid"

5 mm, 7.62 mm



CAGE CLAMP®

mm²/ 28 ... 12 AWG



CAGE CLAMP®

PUSH-IN CAGE CLAMP®

6 mm²/ 28 ... 12 AWG* 2 x 0.5 ... 10 mm²/ 2 x 20 ... 8 AWG



CAGE CLAMP®

mm²/ 24 ... 10 AWG

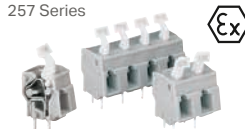


CAGE CLAMP®

6 mm²/ 28 ... 12 AWG*



CAGE CLAMP®



CAGE CLAMP®

6 mm²/ 28 ... 12 AWG* 0.08 ... 2.5 mm²/ 28 ... 12 AWG*



PUSH-IN CAGE CLAMP®



PUSH-IN CAGE CLAMP®

mm²/ 20 ... 14 AWG 0.25 ... 2.5 mm²/ 22 ... 12 AWG



CAGE CLAMP®

mm²/ 20 ... 10 AWG



PUSH WIRE®



CAGE CLAMP®

mm²/ 20 ... 12 AWG* 0.08 ... 2.5 mm²/ 28 ... 12 AWG*

solid"

741-306

8 mm



PUSH-IN CAGE CLAMP®

0.2 ... 0.75 mm²/ 24 ... 18 AWG 2060-852/998-404



PUSH-IN CAGE CLAMP®

0.2 ... 0.75 mm²/ 24 ... 18 AWG 2060-1872/998-404



PUSH-IN CAGE CLAMP®

0.2 ... 0.75 mm²/ 24 ... 18 AWG 2060-1852/998-404

10 mm, 10.16 mm



CAGE CLAMP®



CAGE CLAMP®

0.08 ... 2.5 mm²/ 28 ... 12 AWG* 235-603

0.08 ... 4 mm²/ 28 ... 12 AWG 745-3202



CAGE CLAMP®



CAGE CLAMP®

0.2 ... 6 mm²/ 24 ... 10 AWG 745-1354

0.08 ... 2.5 mm²/ 28 ... 12 AWG* 739-3205



CAGE CLAMP®



CAGE CLAMP®



CAGE CLAMP®

0.08 ... 4 mm²/ 28 ... 12 AWG 745-204

0.2 ... 6 mm²/ 24 ... 10 AWG 745-354

0.2 ... 16 mm²/ 24 ... 6 AWG 745-504/006-000



CAGE CLAMP®



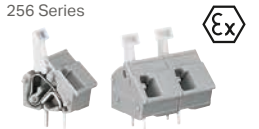
CAGE CLAMP®

0.08 ... 2.5 mm²/ 28 ... 12 AWG* 736-706

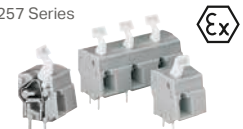
0.08 ... 2.5 mm²/ 28 ... 12 AWG* 737-704



CAGE CLAMP®



CAGE CLAMP®



CAGE CLAMP®

0.08 ... 2.5 mm²/ 28 ... 12 AWG* 255-602

0.08 ... 2.5 mm²/ 28 ... 12 AWG* 256-602

0.08 ... 2.5 mm²/ 28 ... 12 AWG* 257-653



PUSH-IN CAGE CLAMP®



CAGE CLAMP®



CAGE CLAMP®

0.5 ... 1.5 mm²/ 20 ... 14 AWG 235-802/331-000

1.5 ... 16 mm²/ 16 ... 6 AWG 2716-104

1.5 ... 16 mm²/ 16 ... 6 AWG 2716-154



10



10

CAGE CLAMP®

CAGE CLAMP®

0.5 ... 6 mm²/ 20 ... 10 AWG 2706-204

0.5 ... 6 mm²/ 20 ... 10 AWG 2706-254



PUSH WIRE®



PUSH WIRE®



CAGE CLAMP®

0.5 ... 2.5 mm²/ 20 ... 14 AWG 235-802 "solid"

0.5 ... 2.5 mm²/ 20 ... 12 AWG 254-654 "solid"

0.08 ... 2.5 mm²/ 28 ... 12 AWG* 741-505

12,5 mm

745 Series

CAGE CLAMP®

0.08 ... 4 mm²/ 28 ... 12 AWG
745-3254

745 Series

CAGE CLAMP®

0.2 ... 6 mm²/ 24 ... 10 AWG
745-1404

15 mm

745 Series

CAGE CLAMP®

0.2 ... 6 mm²/ 24 ... 10 AWG
745-1454

745 Series

CAGE CLAMP®

0.2 ... 16 mm²/ 24 ... 6 AWG
745-603/006-000

2716 Series

CAGE CLAMP®

1.5 ... 16 mm²/ 16 ... 6 AWG
2716-204

2716 Series

CAGE CLAMP®

1.5 ... 16 mm²/ 16 ... 6 AWG
2716-254

2706 Series

CAGE CLAMP®

0.5 ... 6 mm²/ 20 ... 10 AWG
2706-304

20 mm

745 Series

CAGE CLAMP®

0.2 ... 16 mm²/ 24 ... 6 AWG
745-653/006-000

Pluggable
PCB Terminal Blocks

252 Series

PUSH WIRE®

Ø 2 x 0.4 ... 0.8 mm/ 2 x 26 ... 20 AWG
252-105 "solid"

252 Series

PUSH WIRE®

Ø 2 x 0.4 ... 0.8 mm/ 2 x 26 ... 20 AWG
252-155 "solid"

243 Series

PUSH WIRE®

Ø 4 x 0.4 ... 0.8 mm/ 4 x 24 ... 18 AWG
243-743 "solid"

806 Series

PUSH-IN CAGE CLAMP®

2 x 0.2 ... 1.5 mm²/ 2 x 24 ... 16 AWG
806-106

Ex e II approval

Press-In Technology

Through-Hole Reflow Soldering

Surface-Mount Technology

Only available in this pin spacing

with jumper slot

* AWG 12: THHN, THWN

** 0.5 mm² "sol." / AWG 20 sol.:
Please observe the conductor data
found in the data sheet!

WAGO Kontakttechnik GmbH & Co. KG

Postfach 2880 · 32385 Minden
Hansastraße 27 · 32423 Minden
info@wago.com
www.wago.com

Headquarters	+49 571/ 887 - 0
Sales	+49 571/ 887 - 222
Order Service	+49 571/ 887 - 44333
Fax	+49 571/ 887 - 844 169

WAGO is a registered trademark of WAGO Verwaltungsgesellschaft mbH.

"Copyright – WAGO Kontakttechnik GmbH & Co. KG – all rights reserved. The content and structure of the WAGO websites, catalogs, videos, and other WAGO media are subject to copyright. Distribution or modification to the contents of these pages and videos is prohibited. Furthermore, the content may neither be copied nor made available to third parties for commercial purposes. Also subject to copyright are the images and videos that were made available to WAGO Kontakttechnik GmbH & Co. KG by third parties."