

---

# Champ3™ Manual Hot Melt Glue Gun High Production-Heavy Duty- Industrial



---

**Glue Machinery Corporation™**

4234 Boston St, Baltimore, Maryland 21224

Toll Free 1-888-202-2468 | Phone: 410-761-2727 | Fax: 410-761-5127

Email: [info@gluemachinery.com](mailto:info@gluemachinery.com) | [www.GlueMachinery.com](http://www.GlueMachinery.com)

Thank you for purchasing the Champ3™ Hot Melt Glue Gun. Your Champ3™ will melt, pump and apply a range of hot melts with speed and accuracy. Before using your gun, **please read these instructions thoroughly.**

This Industrial Hot Melt Handgun improves product quality, production speeds and ergonomics while decreasing equipment maintenance. This all electric glue gun melts a wide range of bulk, economy hot melts in the melt tank located in the gun and promotes smooth precise flow with the large piston pump. It eliminates adhesive "Stringing" and dripping from the nozzle with it's check valve nozzle tip. The Champ3™ also has adjustable temperature controls.

## Table of Contents

---

Safety-----	3
Instructions, Requirements, and Standards---	4
Requirements for Normal Operation-----	5
Safety Label---	7
Description----	8
Dimensions---	10
Flow Chart---	11
Operation-----	16
Nozzle Replacement-----	18
Cleaning and Maintenance---	19
Trouble Shooting---	20
Parts Schematic----	22
Spare Parts-----	23
Customer Service Policies---	25
Technical Service Policies---	26
Conditions of Sale-----	27

## Champ3™

### Safety



Caution: Hot Surface!

The Champ3 has been designed and fabricated with safe industrial functionality as the primary objective.

Safe operation can only be achieved if all necessary measures are taken. Operators and maintenance personnel must review and understand safe operation of this machinery prior to use.

### Responsibilities of the Equipment Owner/Operator

- 1) The gun is in working order.
- 2) The use of required personal protective equipment (protective gloves, long sleeve shirt and safety glasses) for all operating personnel.
- 3) Complete operating instructions are available to all operators and in legible condition.
- 4) Only qualified and authorized personnel operate and maintain the gun.
- 5) Operators and Maintenance personnel must be instructed in the operation of this equipment.

# Champ3™

## Instructions, Requirements, and Standards

This operating manual shall be kept on the site of operation. All persons operating the gun must be able to access this manual at any time. In addition to the operating manual, the instructions pursuant to the **Factory Act** and the regulations as regards the use of equipment shall always be at the operator's disposal.

## Meaning of the Various Safety Symbols

This operating manual shall give concrete advice as to safety to draw the user's attention to remaining unavoidable hazards. These hazards imply dangers to

- persons
- product and equipment

The symbols used in the operation manual shall, in particular, call attention to the safety instructions!



**Caution: Hot Surface!**

This symbol indicates that there is, above all, danger to persons, but also to equipment and material.

Hot surfaces such as machine parts, tanks or materials, but also hot liquids cannot always be easily recognized. The utmost caution is advised when this symbol is attached to a component.

**Always wear protective gloves when you have to touch hot surfaces!**

## Champ3™

### Requirements for Normal Operation

This industrial hot melt tool must only be used by persons trained and instructed in its proper use. User must be familiar with all information provided in this manual.

**Prior to each use, check the gun for visible damage and make sure that it is in perfect condition. Immediately inform management of any detected problems with the Champ3™.**



### Safety Instructions for the Use of the Hot-Melt Glue Gun Champ3™

- **Fill melt tank to ¾ full with approved hot melt adhesive. Hot Melts are available in chips, pellets, pillows or flyers. The bottom of the tank lid cap must not touch adhesive when inserted into tank reservoir.**
- **The nozzle and parts can heat up to 482°F / 250 °C      Warning : Hot Surface**
- **Never** exceed working temperature of the hot melt. (Consult your adhesive manufacturer)  
**Overheating of adhesive may lead to degradation which could affect operator health and tool performance.**
- Never operate glue gun without having installed a nozzle.
- **Do not direct glue nozzle towards people.**
- Prior to any nozzle replacement, unplug power cable.
- When a nozzle is replaced, liquid glue may leak out. **Warning: Risk of burning!**
- Never bring the hot nozzle in contact with the power cable.
- Ensure sufficient ventilation when operating gun.
- Do not inhale vapour escaping from the glue. **Attention: inhaling this vapour may cause irritation of the respiratory tract.**
- **If your skin comes into contact with hot glue, cool it with cold water immediately.**
- **Do not try to remove hot melt from the skin when molten. If necessary consult your doctor.**
- **Never work without protective gloves, long sleeve shirt and glasses!**
- **Never fill glue gun with any solvent or paraffin as this poses a risk of explosion.**

## Champ3™

### Caution:

- Do not lay gun on its side.
- Never overfill gun, Fill to 3/4 full.(this is below tank lid/cap when inserted into tank)
- Press trigger only when gun is heated to the recommended adhesive application temperature  
And the glue at the bottom of the tank is molten and at the desired viscosity.
- Before changing the glue type, purge all glue from gun.
- Do not point glue nozzle towards people.
- Do not apply hot melt upward to an overhead substrate.
- Do not hold nozzle tip upward.
- Never work without having installed a nozzle.
- Stop using the gun, if casing is damaged due to shock, breakage or heavy wear.
- Do not use gun if adhesive is leaking from nozzle or any other portion of the gun.
- If hot melt has migrated through cap vent hole into cap, the cap must be cleaned.
- Vent hole in cap must be clean and free of hot melt.

\*Operating a gun with internal leakage is dangerous to the operator and makes repairs of the gun extremely difficult.



Caution: Hot Surface!

# Champ3™

## Safety Label

This illustrates the location of the product safety label on the equipment.



Safety label

**Caution: Hot Surface! Failure to observe may result in burns.**

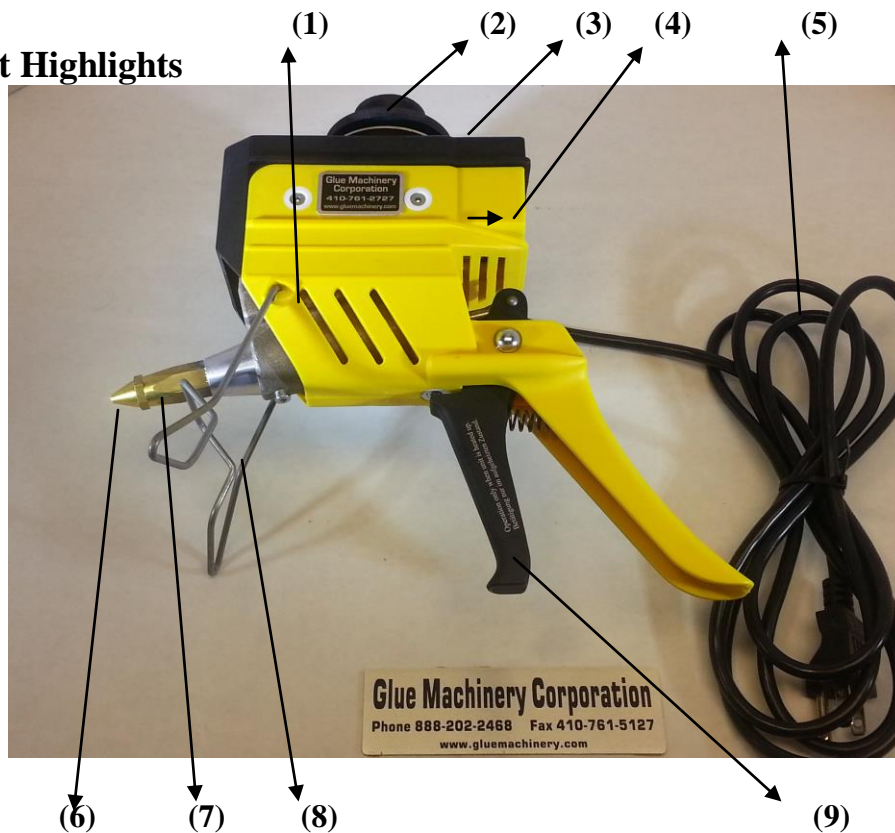
## Description

The Champ3 Hot Melt Glue gun is a compact, handheld, manually operated electric glue gun designed with reliability and safety in mind.

### Product Highlights

- (1) Hot melt tank located under protective cover
- (2) Tank cap/lid
- (3) Bracket with hole for optional balancer connection
- (4) Thermostat adjustment hole
- (5) Power cord
- (6) Nozzle
- (7) Adapter
- (8) Retractable Wire Stand
- (9) Trigger

### Product Highlights





# Champ3™

## Product Description: Champ3™

The Champ3™ is a lightweight, portable and all electric glue gun.

The Champ 3™ uses bulk adhesives in chip, pillows or pellet forms.

The Champ3™ all electric glue gun can be ready to use in 15-20 minutes after applying power.

The Champ3™ comes with a retractable wire stand to support the machine.

The Champ3™ has a four finger trigger for smooth flow from an internal piston pump.

Many optional nozzles are available.

Tank capacity is 5 ounces of melted adhesive.

Adjustable temperature control from 150°F to 374°F.

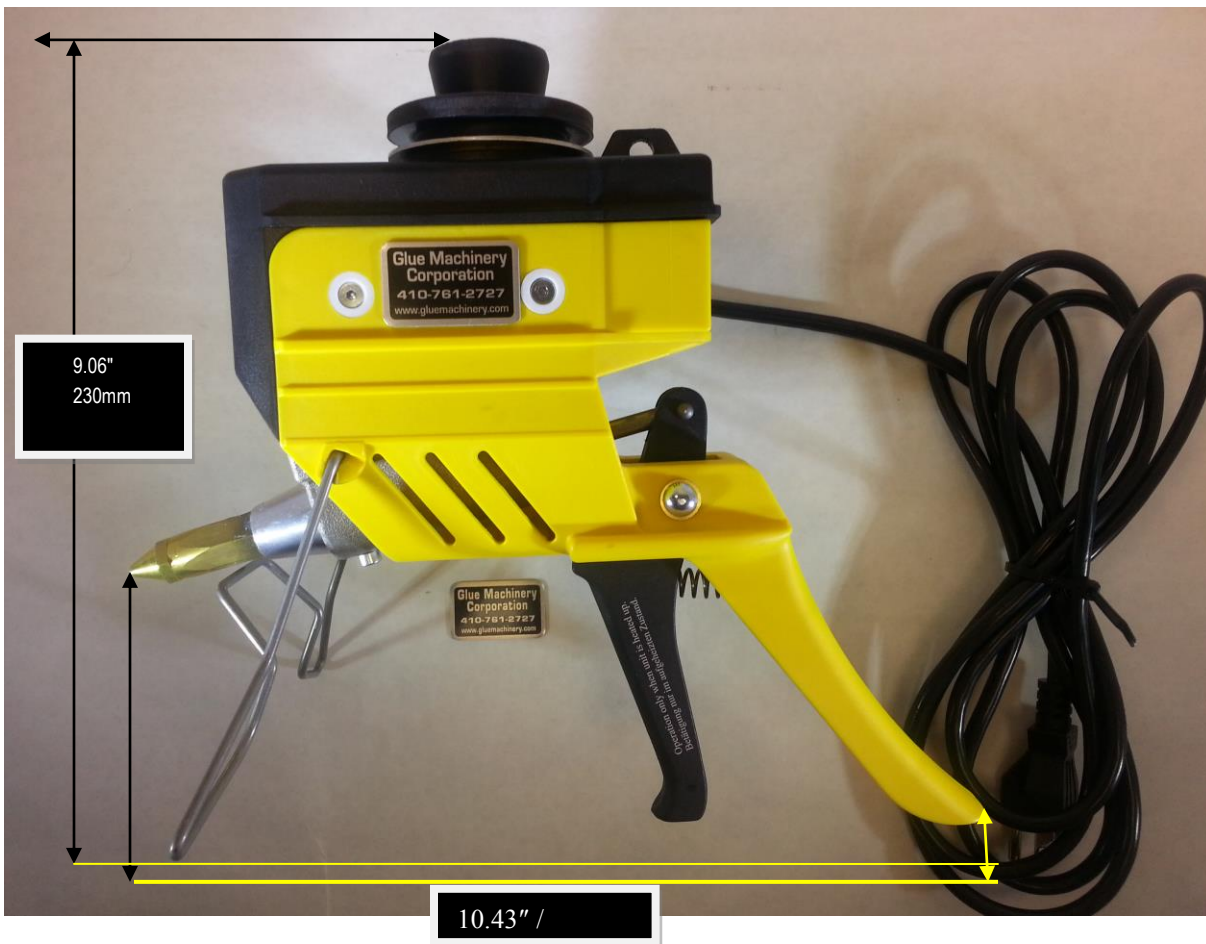
## Specifications : Champ3™

Power Glue gun is available in 120v or 240v	
Current required	2A
Heating capacity	200W
Temperature control	Thermostat
Factory set temperature range	150°F - 374°F / 65°C - 190°C recommended
Adjustable maximum range	455°F / 235°C
Warning:	Temperatures above adhesive temperature range will damage the tool.
Heat-up time	Approx. 15 minutes
Tank capacity	Approx. 3oz (85g) unmelted hot melt pellets. 5oz (141g) molten hot melt
Maximum application per minute	0.22 lb / 100 g
Maximum melt rate	-Depends on adhesive, temperature-setting and frequency of filling -Approximately 1 lb. per hour

Accessories: **Special nozzles available on request.** Please ask for our accessory nozzle leaflet.

# Champ3™

## Dimensions



Caution: Hot Surface!

## Flow Chart Champ3™



Side View New Champ3™

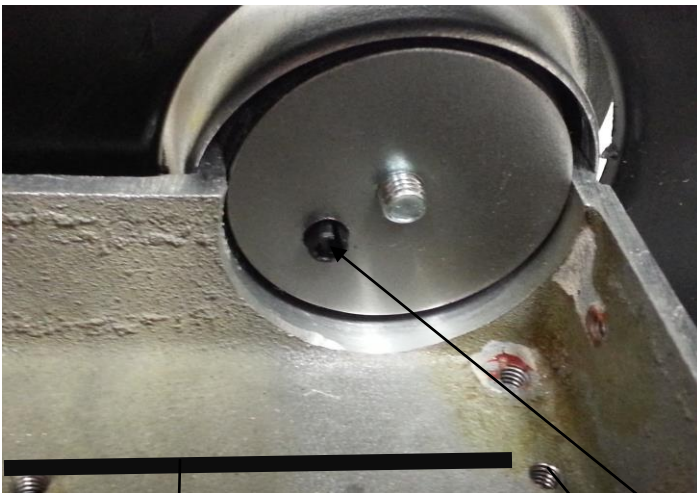


Side View with cover removed showing tank area, nozzle, piston area and trigger. \* Do not operate with side cover removed.

## Champ3™



This cut away shows the tank area and the piston action. The exit piece, adapter and nozzle are also shown. Do not operate with side cover removed.



This cut away is looking up through the tank opening to show the vent hole on the bottom of the tank lid (this area of the tank lid should not come in contact with hot melt in the tank.)

Approximate fill line. Visible screw from threaded hole when lid is open for reference point. Tank lid vent hole (must be clear)

## Champ3™

→ Tank Lid



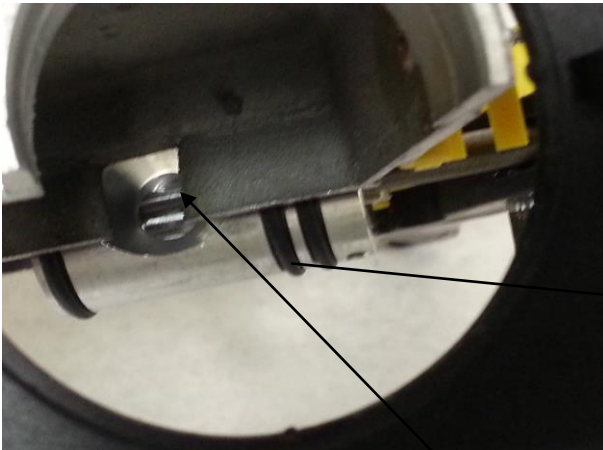
This cut away shows the glue chips in the tank.  
Do not operate



This cut away shows molten glue approximately 15 minutes after warm up.  
The arrows show the flow of the molten glue.  
Do not operate



## Champ3™



This top view is looking down thru the lid into the tank. The molten glue will flow down into the bottom of the tank and into the outlet area shown. This will charge the piston with hot melt and the adhesive will then push through the check valve when the piston is pushed forward. The glue then travels through the exit piece into the adapter and through the nozzle onto the substrate. The O-rings keep hot melt from exiting through the back of the gun.

Cut away area



In this view you see that the check valve is behind the roll pin in the front face of piston. This check valve closes off when the piston is retracting to create a vacuum so the piston can reload with glue from the tank.

Roll pin/Piston face

## Champ3™



This cut away shows the adding of more glue chips to the tank. Regular replenishment of hot melt chips into a tank partially filled with molten adhesive increases melt rate and can allow for continuous operation.  
Do not operate

---

# Champ3™ Operation

## Check List:

- 1) Is the glue gun connected to the correct voltage? The Champ3™ is available in 120v or 240v.
- 2) Is the nozzle clean and free of any foreign matter?
- 3) Is low to medium viscosity hot melt adhesive in the gun?
- 4) Has the heat-up time of approx. 15 minutes (depending on the glue type) been observed?
- 5) The Champ3™ Gun is set from the factory to a temperature of 374°F / 190°C and filled with approved hot melt adhesive.
- 6) For higher temperature hot melts, use screw driver to adjust the temperature thermostat found, in the supplied hole at the rear of the gun. The maximum temperature of 455°F / 235 °C is set when the screw is turned to the stop limit. (Use temperature probe on the bottom of the tank with molten hot melt to verify the actual tank temperature.)
- 7) Different Hot Melts have different “POT LIFE”, the amount of time the adhesive can be held at temperature before degrading.
- 8) Excessive temperature and or adhesive held beyond “POT LIFE” will degrade and could damage the gun. (Consult your adhesive supplier regarding recommended temperature or “POT LIFE”.
- 9) Minor leaking or dripping from the nozzle during heat-up is due to hot melt expanding in the nozzle and heating chamber.
- 10) Trigger pull must be easy for operator.
- 11) Strength of operator, adhesive viscosity, nozzle size, flow rate of adhesive will help to determine required trigger pressure. Forcing the trigger can break the tool.
- 12) Approximate melt rate is 1 lb per hour depending on adhesive, gun temperature and frequency of filling.
- 13) Press the trigger only when gun has warmed up and hot melt is fully molten.

**Warning:** Never Start Working without having installed a Nozzle!

**Warning:** Never Force the Trigger to Create Flow.

**Warning:** Personal injury or material damage caused by improper use of the Hot-Melt Glue Gun shall not be the manufacturers but the user's responsibility.

**Warning:** The tank lid can only be opened and removed when the gun has warmed up!



---

## Champ3™

- 14) The vent hole in the bottom of the tank lid must be clear for proper operation. If this hole is clogged it will create a vacuum in the gun that will impair performance.
- 15) Keep hot melt free of dirt and humidity.
- 16) Do not start gluing before glue is molten and fluid in the gun.
- 17) Hot Melts that have not become completely molten are not at the correct gluing temperature required.
- 18) Hot Melts below the optimal gluing temperature will not produce optimal gluing results.
- 19) Higher viscosity hot melts will require additional trigger pressure.
- 20) Excessive manual trigger pressure can accelerate the wear of internal components.
- 21) Frequency of filling the tank with hot melt chips, pellets or other adhesive depends on consumption rate and adhesive. (Do not overfill tank)
- 22) Adding hot melt to a tank that is partially filled with molten adhesive will increase melt rate.
- 23) Adding pellets, pillows or chips of adhesive to the tank with a small amount of molten adhesive in the tank will raise the viscosity of the molten adhesive in the tank and can affect gun and adhesive performance.
- 24) Only start using the tool when the glue has become molten. Test pattern capability and familiarize yourself with the tool prior to use.
- 25) Never invert/turn the tool upside down.
- 26) When done using tool, unplug from power source.
- 27) Gun and Glue remain hot for up to 1 hour after unplugging.
- 28) Tool does not need to be purged of glue at shut down. Never lay gun on its side.



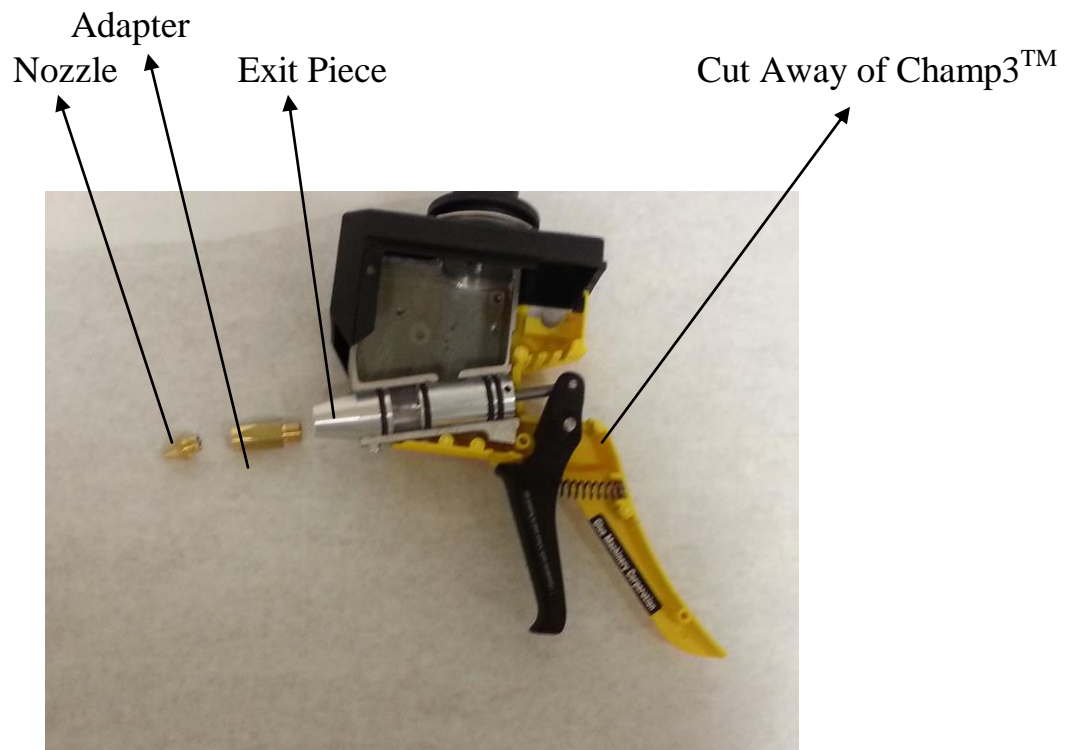
Caution: Hot Surface!

**Warning:** Once the gun has warmed up, nozzle and cover are extremely hot!

**Warning:** Never use tool without wearing protective gloves and safety glasses.

## Champ3™

### Nozzle Replacement



**Warning:** Prior to changing nozzles, unplug power cable.



**Warning:** Only replace nozzles when glue gun is warm (Glue Gun temperature of 140°F –176°F)  
Always wear protective gloves and glasses.



**Warning:** Replacing an unheated nozzle may damage the gun.  
If the nozzle is removed when unit is fully heated adhesive will leak out.

**Warning: Risk of Burning!**

- If your skin contacts hot glue, cool it immediately with cold water.
- Do not try to remove hot melt from the skin when molten.

**Consult your doctor at once if burned with hot melt.**

## Cleaning and Maintenance

Only fill the Champ 3™ with approved hot melt adhesive (Contact Glue Machinery Corporation 800-202-2468 or your adhesive supplier.) Any contamination of adhesive may cause the Champ3™ to malfunction. Do not use solvents, such as petrol, benzoyl, toluole, acetone or turpentine **for cleaning, as this could result in an explosion.**

**If proper operating instructions are observed, the gun will not need major cleaning very often.**

To ensure peak performance and durability, it is important that it be maintained and serviced regularly. Please document the day you start using this tool with a call to our **service department.**

1-888-202-2468 or Email: [info@gluemachinery.com](mailto:info@gluemachinery.com) | [www.GlueMachinery.com](http://www.GlueMachinery.com)

### Additional Information

#### EC-Conformity Certificate

Acc. to EC Guideline 89/392/EEC, Supplement IIA

This is to certify that the below-described machine, as regards to its design and type, as well as the construction sold by us, is in conformity with the relevant safety and health regulations of the EC guideline.

Description of the machine	:	Champ3™ Glue Gun
Intended use	:	Application of solvent-free hot melts
Type of machine	:	Champ3™
Serial number	:	

**Design modifications influencing the technical data specified in the operating manual and the intended use, this meaning a considerable change of the device, render this conformity certificate invalid!**

Relevant EC guideline EC Machine Guideline (89/392/EEC)  
Amendment of Machine Guideline (91/368/EEC)

Note: Standards have been applied EN 60204 Part 1 (DIN VDE 0113 Part 1)  
EN 292 Parts 1 and 2, EN 349, EN 294

An original version of the operating instructions for the glue gun, in the national language of the user - here English - is enclosed. Date: December 2001

# Champ3™

## Trouble-Shooting

### Possible Problems, Causes and Trouble-Shooting

In case of damage, send your Champ3™ to Glue Machinery Corporation™. We cannot be responsible for any repairs made by the customer.

Problems	Possible Causes/ Faulty Operation	Trouble-Shooting
After complete warm up little to no glue comes out of the nozzle when trigger is depressed	Clogged nozzle Adhesive too thick/too high viscosity Temperature too low Cap vent clogged	Unscrew nozzle, clean or replace it Wrong glue or temperature too low Use probe, measure temperature of molten glue in the bottom of tank Clean vent hole
Glue is too thin or thick	Temperature too high or too low	Check temperature and adjust and use different hot melt
Glue leaks out of nozzle	clogged nozzle  check nozzle valve in adapter for stuck open	<b>Warning:</b> wear gloves and glasses (risk of being burned)  Unscrew nozzle at working temperature, clean it carefully or replace it.  We recommend customers stock spare nozzles
No temperature	Gun not plugged into power. Thermostat or heater malfunction	Connect plug to power outlet Consult with Glue Machinery Corporation and replace components

Caution: Hot Surface!

## Champ3™



Caution : Hot Surface!

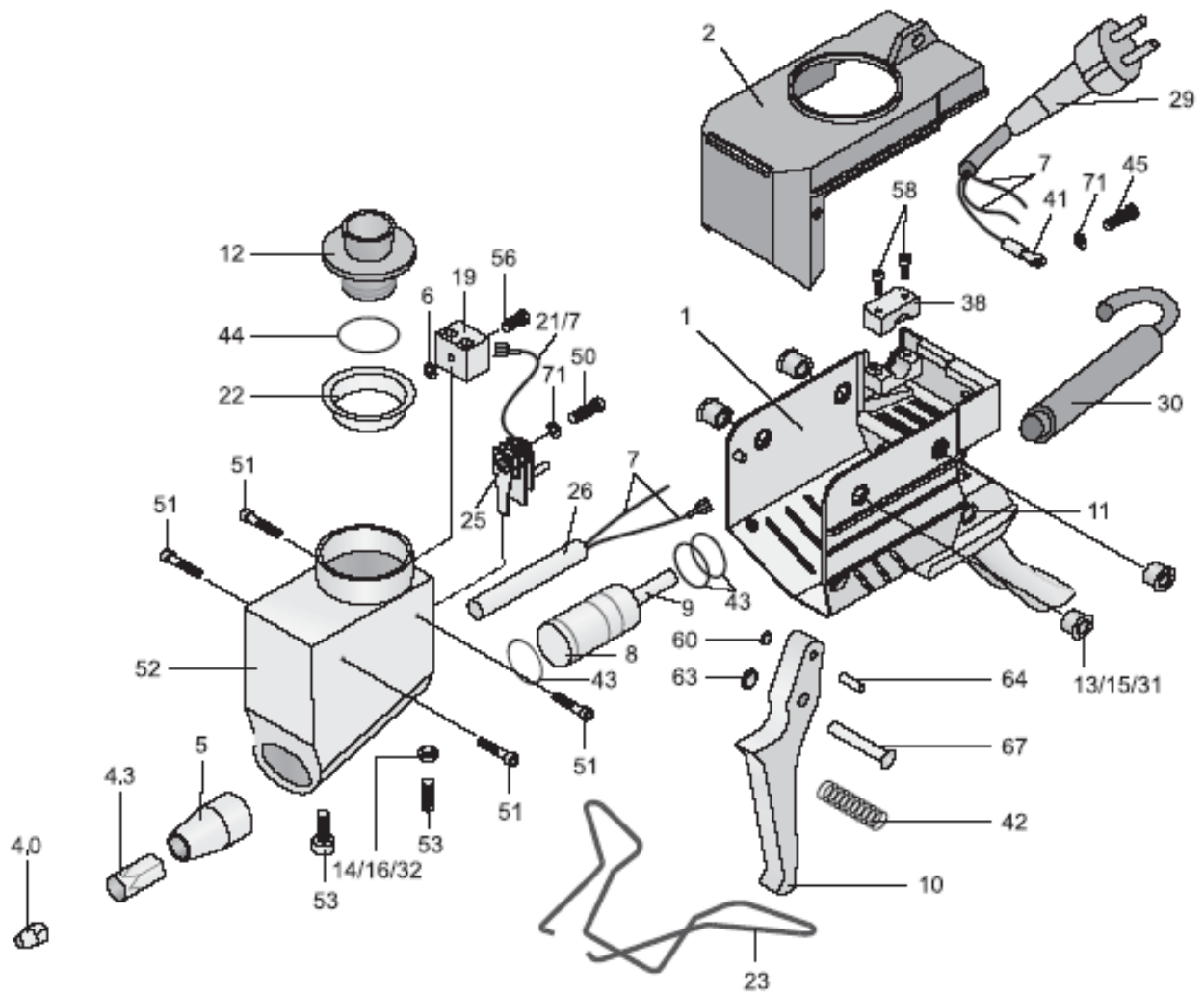
\*Glue Machinery recommends that the customer utilize a temperature probe to take the temperature from the bottom of the tank when fully heated and at least partially filled with molten hot melt adhesive.



Caution: Hot Surface!

# Parts Schematic

## Champ3™



---

## SPARE PARTS – CHAMP3™

	Part Number	Description
1	G05E19-002	Casing part
2	G05E22-001	Cap
4.0	G05E01-017	Nozzle
4.3	G05E01-015	Adaptor, nozzle
5	G05E01-019	Exit piece
6	G05E99-002	O'ring
7	G05E28-001	Sleeving, 6" length
8	G05E78-001	Piston cpl.
9	G05E16-001	Piston rod
10	G05E76-001	Champ 3 Trigger
11	G05E25-002	Bearing sleeve
12	G05E22-002	Tank cap/Lid with Oring
13	G05E28-002	Insulating sleeve
14	G05E28-003	Insulating sleeve
15	G05E28-004	Distance sleeve
16	G05E28-005	Distance sleeve
19	G05E35-002	Ceramic grip
21	G05E93-001	Cord
22	G05E13-001	Collar, Champ3
23	G05E50-003	Stand
25	G05E97-001	Thermostat-Champ3
26	G05E50-004	Heater, Champ3, 240 V
	G05E50-005	Heater, Champ3, 120 V
		Cord with
29	G05E93-002	plug, 120V Champ3
30	G05E47-004	Bending protection
31	G05E39-001	Rivet
32	G05E39-002	Rivet
38	G05E47-005	Champ3, Bride
41	10241	High Temp Ring Terminal
42	G05E42-003	Pressure Sprin,
43	G05E99-003	O-ring
44	G05E22-003	O-ring Cap, Cham,
45	G05E39-003	Cyl Screw M4x8
50	G05E39-004	Cyl Screw M4x8

---

## SPARE PARTS – CHAMP3™

	Part Number	Description
51	G05E39-005	Screw
52	G05E07-001	Melting container, Champ3
53	G05E39-006	Screw M4x10
56	G05E39-007	Screw M4x18
58	G05E39-008	Screw 2.9x16
60	G05E99-004	Ring
63	G05E41-001	Washer
64	G05E39-009	Rivet ,adapter sleeve
67	G05E39-010	Rivet
71	G05E41-002	Washer for Champ3- 5 rivet



## CUSTOMER SERVICE POLICIES

### Standard Parts:

- Customer Service will strive to ship stock parts within 24 hours of receipt of purchase order.
- Most non-stock parts will be available for shipment within 5-10 business days of receipt of purchase order.
- A \$50.00 minimum order is required on all orders.
- A 30% re-stock fee may apply to all returned parts received in new and operable condition within 30 days of shipment.

### Special Parts:

- Special non-stock items may have considerable lead times. Customers who use special (non-stock) items are encouraged to keep these items in stock.
- Returns are accepted at the sole discretion of Glue Machinery Corporation. No equipment or goods are to be returned without a Glue Machinery return authorization number. If an item is deemed returnable, a re-stocking fee of up to 50% may apply to special or non-stock items.

### Shipments:

- Most shipments are routed UPS. Shipments over 150 pounds are forwarded via trucking service.
- Shipments will be routed by other means upon request.

### Same day (24 hour) special handling:

- Rush orders are accepted. Orders received after 3:00 p.m. EST, may be assessed a handling charge of \$25.00.

NOTE: CUSTOMER SERVICE DIRECT DIAL PARTS - 1-888-202-2468

**Prices and Terms subject to change without notice.**

---

## TECHNICAL SERVICE POLICIES

### Repairs (at Glue Machinery Corporation facility):

- Items determined repairable are invoiced at cost of materials plus \$75.00/hour labor. Estimates will be made prior to any repair service.
- Most guns are repairable and should not be discarded. Please call Glue Machinery personnel to determine the feasibility of repairing questionable equipment.
- Customer is responsible for all freight charges.

### Installation Supervision:

- Glue Machinery Corporation provides in plant technical supervision at a rate of \$850.00 per day, plus expenses.
- Two weeks notice is necessary to schedule Glue Machinery Corporation technical personnel.
- Customers are responsible for pre-installation preparation. Information is provided for machine and head mounting, electrical information, timing information, etc.
- Missed appointments, or those cancelled with less than 24 hours notice, will be charged at the full rate of \$850.00, plus expenses.
- If Customer is not prepared for a scheduled service visit, the day will be charged at \$850.00 plus expenses.

### Technical Service (in-field repair):

- Technical service personnel are available to all Glue Machinery Corporation customers. Glue Machinery Corporation should be contacted at 888-202-2468 if a technician is needed.
- Service charges are: \$100.00/hour - Monday through Friday, plus expenses; and \$150.00/hour on weekends and holidays, plus expenses. Mileage is charged at \$0.52/mile. Minimum service charge is \$425.00 plus expenses. Under certain circumstances, time is charged from the time a Glue Machinery Corporation technician leaves his location until he returns to that location. The customer will be notified in advance of this situation and the customer must authorize these charges.

---

## CONDITIONS OF SALE

1. **ACCEPTANCE** - Any purchase order issued in response to a Glue Machinery Corporation Quotation is considered to be Buyer's acceptance of the Terms & Conditions contained herein. Seller hereby objects to any additional, different or conflicting terms or conditions set forth in Buyer's purchase order. No terms, provisions, or conditions of Buyer's purchase order shall be effective unless expressly accepted by Seller in writing.
2. **ENTIRE AGREEMENT** - The provisions herein set forth, plus all drawings, constitute the entire contract between the Seller and the Buyer and supersede all prior Proposals, purchase orders, correspondence and other communications, whether written or oral, between the Seller and the Buyer. No provision of these conditions of Sale shall be subject to change except by the written authorization of a properly authorized representative of the Seller.
3. **PRICES-PAYMENT** - Terms of payment are as stated on the quotation. C.O.D. or prepayment may apply to new customers. Transactions are FOB Seller's factory exclusive of sales or use taxes. All payments shall be in the legal currency of the United States. All prices are subject to exception or change without notice. Pricing errors may be corrected at any time. The Seller may, at any time and without obligation, suspend performance or require payment in cash, security, or other adequate assurances satisfactory to the Seller when, in the opinion of the Seller in its sole discretion, the financial circumstances of Purchaser warrant such action.
4. **TAXES AND DUTIES** - The amount of all applicable taxes, (federal, state or local) will be charged in Maryland unless the purchase order clearly states that the equipment of goods are tax exempt and an exemption certificate is on file at the Seller's location. Any personal property or other taxes assessable on the equipment or applicable taxes outside of Maryland shall be the sole responsibility of the buyer.
5. **DELIVERY** - Deliveries shall be FOB Seller's plant freight collect. Buyer will keep the equipment or goods insured to the full purchase price with Seller as the named loss payee and Seller retains a security interest in the equipment or goods until the purchase price is paid.
6. **TITLE AND RISK OF LOSS** - Risk of loss or damage to the equipment or goods shall pass to Buyer F.O.B. Seller's plant. Buyer will keep the equipment or goods insured to the full purchase price with Seller as the named loss payee and Seller retains a security interest in the Equipment or goods until the purchase price is paid.
7. **ENGINEERING DATA** - All Engineering data, design information, engineering and solid works drawings used on the completion of this order are the property of the Seller.
8. **PATENT INDEMNIFICATION** - The Seller agrees to indemnify Buyer from and against all claims, demands and suits based on allegations that the equipment or goods designed and manufactured by Seller constitute an infringement of any patent, if the Seller is notified promptly as the assertion of any such allegation, and if the Seller is given authority to

defend the same and reasonable information and assistance for the defense of the same. Upon notification of an infringement claim, the Seller reserves the right to do any of the following, at no cost to the Buyer:

- (a) Procure for the Buyer the right to continue using the equipment; or
- (b) Replace the same with non-infringing equipment; or
- (c) Modify the equipment so that it becomes non-infringing.

The Seller does not assume liability for the infringement of any method and/or process patent or for infringement of any patent covering articles manufactured or produced in accordance with Buyer's design.

9. RETURNS - No equipment or goods requiring repair or alleged to be defective are to be returned without authorization by the Seller.

10. FREIGHT - Buyer is responsible for all freight and forwarding charges, import fees, customs fees, duties, taxes, etc.

11. WARRANTY AND LIMITATION OF LIABILITY - All equipment and goods are warranted by the Seller to be free from defects in material and workmanship as follows:

ALL ITEMS EXCEPT ELECTRICAL COMPONENTS AND HOT MELT HOSES FOR A PERIOD OF SIX (6) MONTHS FROM DATE OF SHIPMENT OR ONE THOUSAND (1,000) HOURS OF USE, WHICHEVER OCCURS FIRST.

FOR ELECTRICAL COMPONENTS FOR A PERIOD OF NINETY (90) DAYS FROM THE DATE THE EQUIPMENT OR GOODS WERE SHIPPED, AND

(C) FOR HOT MELT HOSES FOR A PERIOD OF SIX (6) MONTHS FROM DATE OF SHIPMENT.

THIS WARRANTY DOES NOT APPLY TO EQUIPMENT OR GOODS WHICH ARE, BY THE SOLE DISCRETION OF THE SELLER, MISUSED, OR ABUSED, OR DAMAGED FROM INSTALLATION, OR NOT USED IN ACCORDANCE WITH SELLER'S INSTRUCTIONS. NORMAL WEAR OF EQUIPMENT OR GOODS IS NOT INCLUDED IN THIS WARRANTY.

Equipment or goods not manufactured by the Seller but supplied through the Seller shall carry the warranty of the original manufacturer.

THE SELLER'S SOLE LIABILITY UNDER THIS WARRANTY SHALL BE LIMITED TO EITHER REPLACING OR REPAIRING WITHOUT CHARGE, AT ITS FACTORY OR ELSEWHERE AT ITS

DISCRETION, ANY EQUIPMENT OR GOODS NOT MEETING THIS WARRANTY, OR AT SELLER'S OPTION REFUNDING THE PURCHASE PRICE. THE SELLER SHALL IN NO EVENT

BE LIABLE FOR ANY OTHER DIRECT, OR ANY SPECIAL INDIRECT OR CONSEQUENTIAL DAMAGES OF ANY KIND UNDER THIS CONTRACT OR OTHERWISE.

The warranties of the Seller do not cover, and the Seller makes no warranty with respect to any defect, failure, deficiency or error that is:

Not timely reported to the Seller, or

(b) Due to misapplication, modification, disassembly, abnormal conditions of temperature, dirt or corrosive matter; or

(c) Due to operation, either intentional or otherwise, above rated capacities or in an otherwise improper manner.

Seller assumes no responsibility for the quality or performance of coatings, adhesives or other materials used with Seller's equipment or goods. All claims must be brought within one (1) year of sale or identification of a defect. THERE ARE NO OTHER WARRANTIES, EXPRESS OR IMPLIED, INCLUDING THE IMPLIED WARRANTIES OF MERCHANTABILITY AND FITNESS FOR A PARTICULAR PURPOSE.

12. GOVERNING LAW: ANY CONTRACT RESULTING OUT OF THIS PROPOSAL SHALL BE GOVERNED BY THE LAWS OF THE STATE OF MARYLAND. Any legal action to enforce any right granted by this contract must be filed within one (1) year after delivery or for warranty claims within one (1) year of the expiration of the applicable warranty period.

**NOTES:**