
Operating Instructions for Champ™ 600



Glue Machinery Corporation™

4234 Boston St, Baltimore, Maryland 21224

Toll Free 1-888-202-2468 | Phone: 410-761-2727 | Fax: 410-761-5127 | Email: info@gluemachinery.com

Table of Contents

Product Description	3
Trouble-Shooting	4
General Safety Instructions	5
Start-up	7
Operation	11
Drawings / Spare Parts.....	16
Additional Information	19
Customer Service Policies.....	21

Champ™ 600 Hot Melt Glue Gun

Dear customer,

Thank you for purchasing the Champ™ 600 Hot Melt Glue Gun. The glue gun you purchased will help you to glue parts together easily and effectively. Before using the gun, *please read these instructions thoroughly.*

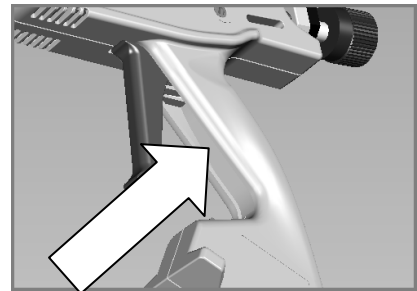
Product Description

Proper Use

The gun works with and dispenses hot glue. Therefore, the glue gun should only be used by qualified people. Handling the gun properly will save you unnecessary accident hazards and problems.

Personal injury or material damage caused by an improper use of the Hot-Melt Glue Gun shall not be the manufacturer's but the user's responsibility.

The following illustration shows where to find the serial number of the applicator:



Technical Data

Weight of the gun	2.69 lb / 1220 g
Power Supply	120V or 240V
Power Consumption	500 Watt
Current consumption	4.2 A at 120V / 2.1 A at 240V
Degree of protection	I
Class of protection	IP 30
Temperature control	Thermostat
Temperature limitation	Temperature controller
Operating temperature	68 – 392 °F / 20 – 200 °C
Consistency of temperature	±41 °F / ± 5 °C
Heat-up time	Approx. 10 min.
Gross Tank Capacity	0.55 lb / 250 ml
Conveying system	Mechanics
Length of electric cord	70.9 in / 1.8 m

Trouble-Shooting

Possible Fault Signals and Assistance in Trouble-Shooting

In case of damage, send glue gun to Glue Machinery Corporation™. We will not be responsible for any repair made by the customer.

Problems	Possible Causes/ Faulty Operation	Trouble-Shooting
Little or no glue extrudes through nozzle even though the adhesive is fully molten.	<ul style="list-style-type: none">• clogged nozzle• temperature too low	<ul style="list-style-type: none">• unscrew nozzle, clean or replace it• check temperature• check and clean vent hole on tank closure cap/lid
Glue is too thin or too thick to flow as required	<ul style="list-style-type: none">• temperature too high or too low	<ul style="list-style-type: none">• check temperature
Glue drips out of nozzle	<ul style="list-style-type: none">• clogged nozzle	<ul style="list-style-type: none">• unscrew nozzle, clean it carefully or replace it. Unscrew nozzle at working temperature, wear gloves (risk of burning).
No temperature	<ul style="list-style-type: none">• gun switched off	<ul style="list-style-type: none">• connect plug to socket properly.• if necessary, return gun to Glue Machinery Corporation

General Safety Instructions

User's Care and Diligence

The Glue Gun has been designed and fabricated according to the applicable harmonized standards and further technical specifications. So, it is state of art and ensures a maximum of safety.

This safety, however, can only be achieved in practice, if all necessary measures have been taken. The user of the device shall be obliged to plan these measures and to make sure that they are taken.

In particular, the user shall ensure that

- the gun is in working order
- the required personal protective equipment (protective gloves) for the operating personnel is available and used
- the entire operating instructions are in legible condition and available to the operator
- only sufficiently qualified and authorized personnel operates and maintains the gun
- this personnel is regularly instructed in the applicable aspects of operational safety and environmental protection, and knows the operating instructions and, in particular, the safety instructions.

Make the information available:

This operating manual shall be kept on the site of operation. It must be ensured that all persons operating the gun can look into the manual at any time. In addition to the operating manual, the instructions pursuant to the Factory Act and the regulations as regards the use of equipment shall always be at the operator's disposal.

Safety Symbols

This operating manual shall give concrete advice as to safety to draw the user's attention to remaining unavoidable hazards. These hazards imply dangers to

- persons
- product and equipment

The symbols used in the operation manual shall, in particular, call attention to the safety instructions!



This symbol indicates that there is, above all, danger to persons, but also to equipment and material.



Caution: Hot surface!

Accident Prevention Regulations VBG 125 - W26

Hot surfaces such as machine parts, tanks or materials, but also hot liquids cannot always be perceived. The utmost caution is advised when this symbol is attached to a component.

Always wear protective gloves when you have to touch hot surfaces!

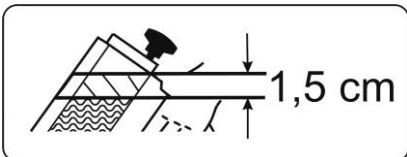
Champ™ 600 Hot Melt Glue Gun



- Wear protective gloves and safety goggles whenever you work with the applicator.



- To avoid accidents lay the cables so that they will not cause any risk of stumbling.
- Only fill the tank up to 1,5 cm (~0.6 inch) under the upper rim.



- **Never** exceed working temperature of the hot melt.
 - **Overheating may lead to decomposition which may affect health.**
- Never start working without having mounted a nozzle.
- **Do not direct glue jet towards people.**
- Prior to any nozzle replacement, unplug connecting cable.
- When a nozzle is replaced, liquid glue may leak out. **Warning: Risk of burning!**
- Never bring the hot nozzle in contact with the cable.
- Ensure sufficient ventilation.
- Do not inhale vapour escaping from the glue. **Attention: inhaling this vapour may cause irritations of the respiratory tract.**
- **When your skin comes into contact with hot glue, cool it with cold water immediately.**
- **Do not try to remove hot melt from the skin first. If necessary consult your doctor.**
- **If hot adhesive gets into your eyes, immediately cool/run them under running water for about 15 minutes and consult your doctor at once!**
- **Never work without protective gloves and glasses!**
- **Never fill in any solvents or paraffines to avoid risk of explosion.**

Note:

- ***Do not lay gun on its side***
- ***Never overcharge gun***
- ***Press trigger only when gun is heated***
- ***Before you change the glue type, pump residual quantity out of the nozzle***
- ***Do not direct glue jet towards people***
- ***Do not carry out overhead work***
- ***Do not hold nozzle top upward***
- ***Never work without having mounted a nozzle***
- ***Stop using the gun, if casing is damaged due to shock, breakage or heavy wear.***

Start-up and Operation

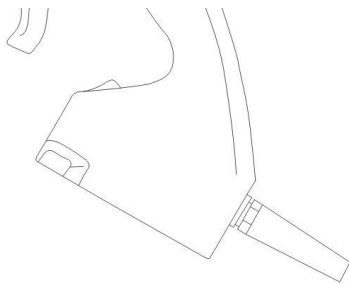
To avoid risk of tripping/falling:

Lay all instrument connections (cable, hoses, and lines) so that they do not cause any risk of stumbling (cable conduits, bridges)!

Operation of the Glue Gun

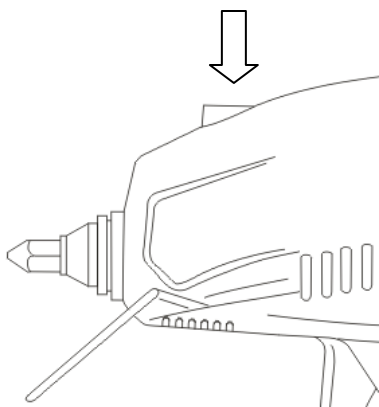
An illuminated on/off-switch indicates that the applicator is switched on or off.

**Warning: Once the gun has warmed up, nozzle and cover are extremely hot!
Never work without wearing protective gloves!**



Minor leaking while the applicator is warming up is due to the hot-melt expanding in the nozzle and heating chamber.

The Champ™ 600 glue applicator is factory-set to 200°C (392°F). The temperature is continuously adjustable at the upper side of the applicator, using a screw driver. The right-end stop is the maximum temperature of 200°C (392°F). To lower the temperature, turn screw counter clockwise.



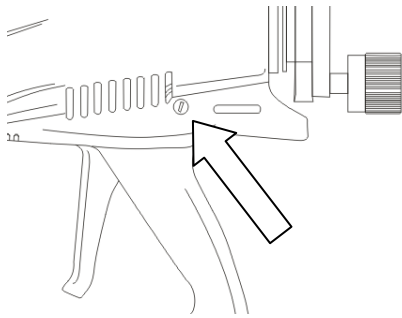
Champ™ 600 Hot Melt Glue Gun

- The Champ™ 600 glue applicator must only be used to dispense non-reactive hot-melts. Never fill the gun with other materials. The hot-melt glue applicator is capable of working with all non-reactive hot-melt types which are designed for working temperatures of up to max. 200°C (392°F).
- As soon as the gun is warmed up (approx. 5 min.), open the lid and load granulate up to 1,5 cm (~ 0.6 inch) under the lower rim of the feeding opening.
- Close the cover and allow the applicator to melt the glue.

The cover must only be opened when the gun is warmed up.

Adjusting the Trigger

The adjustment of the trigger influences the lever stroke and the amount of glue that can be dispensed at once. A screwdriver can be used to turn the adjustable screw on the left side of the applicators' casing. The longer the lever stroke, the more glue can be dispensed at once.



Application of Hot Melts

Only start glueing when the glue has properly molten.

Make yourself familiar with the instrument first. Apply a little glue in varying forms (small, large dots) on a piece of paper or cardboard. Observe the correct working temperatures of the individual hot melts.

Never start working without having mounted a nozzle!

Press the trigger only when gun has warmed up!

Vent in the corner must, by all means, be left open.

Always deposit the glue applicator on the wire stand or the respective plate².

The glue applicator must not be laid on its side.

Do not open the lid before the applicator has warmed up.

² Plate is an optional accessory No. 2100

Champ™ 600 Hot Melt Glue Gun

Nozzle Replacement

Only replace nozzles when the glue gun is warm (instrument temperature 140 – 176°F (60 - 80°C) and empty. You are advised to wear protective gloves.



Prior to exchanging nozzles, unplug connecting cable!

Replacing a cold nozzle may damage the gun. If the nozzle is replaced when it is too hot, liquid adhesive may leak out.



Attention: Risk of burning!

- If your skin contacts with hot glue, cool it immediately with cold water.
- Do not try to remove hot melt from the skin first. If necessary, consult your doctor.
- If hot adhesive gets into your eyes, immediately cool them under running water for about 15 minutes.
- **Consult your doctor at once!**



Never start working without having mounted a nozzle!
Do not direct glue jet towards people!

Champ™ 600 Hot Melt Glue Gun

Heat Up

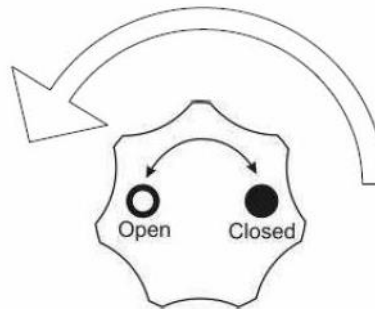
- Push the On/Off-switch, an illuminated light indicates the device is on.
- Adjust the temperature to approx. 100 °C* with the (slot)screwdriver, so the hot-melt will get soft and the lid can be opened.
- Check the temperature with a temperature measuring device before opening the lid.



* Softening-temperature may vary depending on hot-melt used. Precise information can be found on the technical data sheet of the glue.

Open Lid

- Make sure the Champ 600 is unplugged before you open it!
- Turn the star grip (# 2613) counter clockwise and flip the lid open.
- Caution, as hot-melt sticking to the lid may drip down.



Champ™ 600 Hot Melt Glue Gun

Operation

The glue gun shall only be used/applied according to its intended use. Please see Section “General Safety Instructions”.

Improper use of the gun may cause personal injury or material damage.

Non-observance of the safety instructions when working with the gun may lead to serious burns and/or product damage.

Please refer to the following checklist before you switch on the glue gun:

Check List

- Is the glue gun connected to a 120/240 volt outlet?
- Is the nozzle clean and free of any foreign matter?
- Is solvent-free hot melt in the gun?
- Has the heat-up time of approx. 10 minutes (depending on the glue type) been observed?

While you are working...



...the glue gun must always be deposited on the wire strap.

Never lay gun on its side!

- Open gun only if required; cover can only be opened while gun is warm.
- Keep hot melt free of dirt and humidity.

General Hints

- Do not start glueing before glue is fluid.
- Glues that have not molten completely will not reach the glueing temperature required.
- Not having the required glueing temperature, glues cannot produce optimum glueing results.
- Due to the high viscosity of partly molten glues a lot of manual energy will be needed to dispense them.
- This will cause some essential parts of the gun to wear very fast .

Cleaning and Maintenance



Only fill clean and solvent-free glue into the gun. Contaminated glue, nails, clamps, sand, etc. cause malfunctions. The use of solvents, petrol, benzole, toluol, acetone, terpentine, etc. will lead to an explosion. Never use these materials!

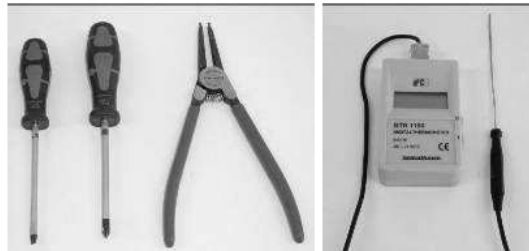
If you observe the operating instructions, the gun does normally not need major cleaning.

If the gun is used frequently, to ensure peak performance and durability, it is important that it be maintained and serviced regularly. To set a date, please call our service department. 1-888-202-2468.

How to Open the Champ 600

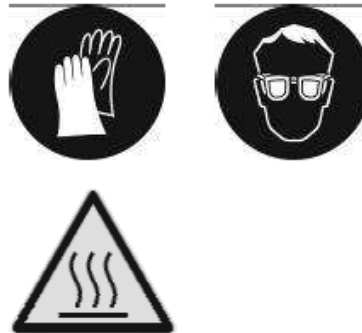
Tools Used

- Slot Screwdriver 
- Phillips Screwdriver (PH2) 
- Snap Ring Pliers A3 DIN / ISO 5254-A for Ø 40-100mm (Brand: Format)
- Temperature Measuring Device



Safety Precautions

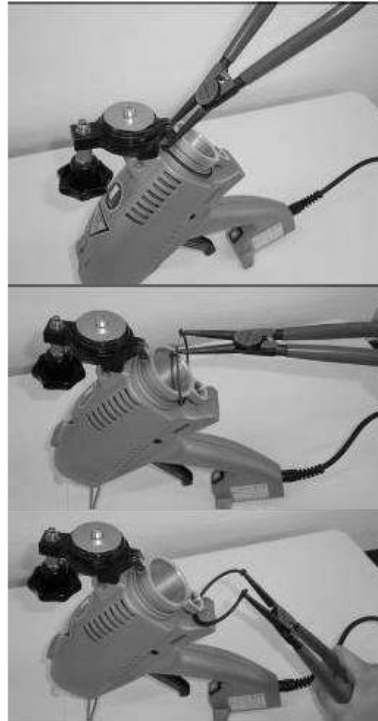
- Always wear gloves and safety goggles when handling the device.
- Make sure the temperature screw is **not** turned all the way to the right-end stop, as the device will be very hot.
- Always pull the plug of the device when opening it.



Champ™ 600 Hot Melt Glue Gun

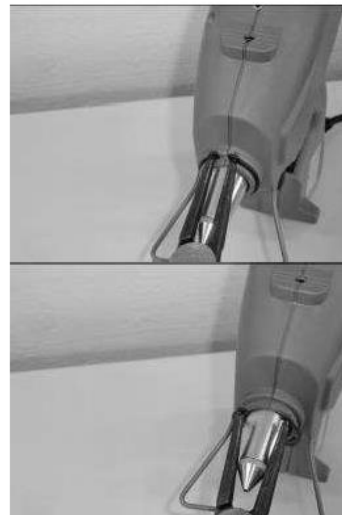
Remove Snap Ring #3355

- Apply the snap ring pliers to the snap ring.
- Tilt the snap ring backwards in order to remove it from the device.





Remove Snap Ring #3354

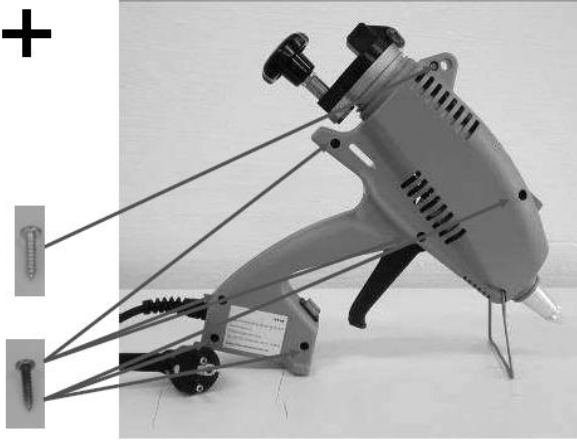
- Apply the snap ring pliers to the snap ring.
- Tilt the snap ring backwards in order to remove it from the device.



Champ™ 600 Hot Melt Glue Gun

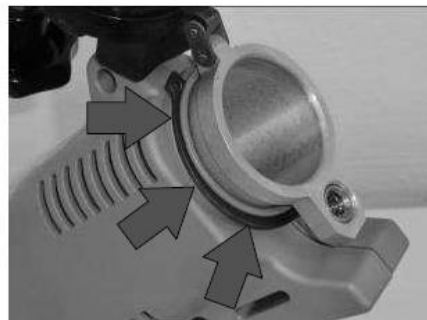
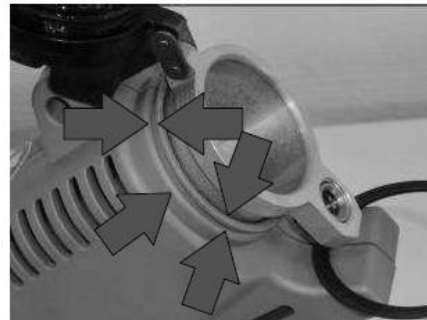
Opening the Champ 600

- Use the Phillips screwdriver to open the case. +
- There two types of casing screws:
3363  and # 3423. 
- The screw # 3363 goes near the eyelet
- The other screws are for the rest of the casing



Reattach Snap Ring #3355

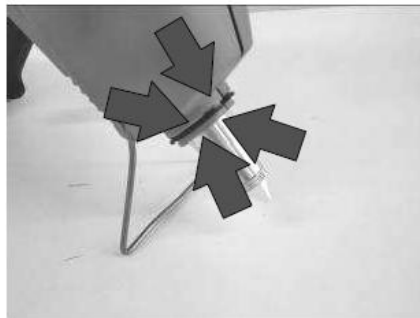
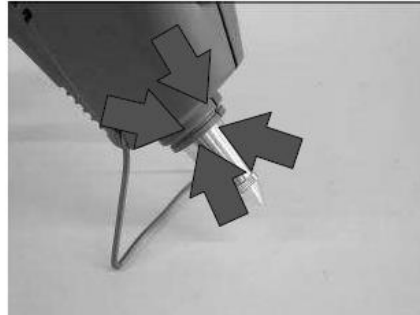
- Make sure the snap ring is fitted into the gap intended when reattaching it.



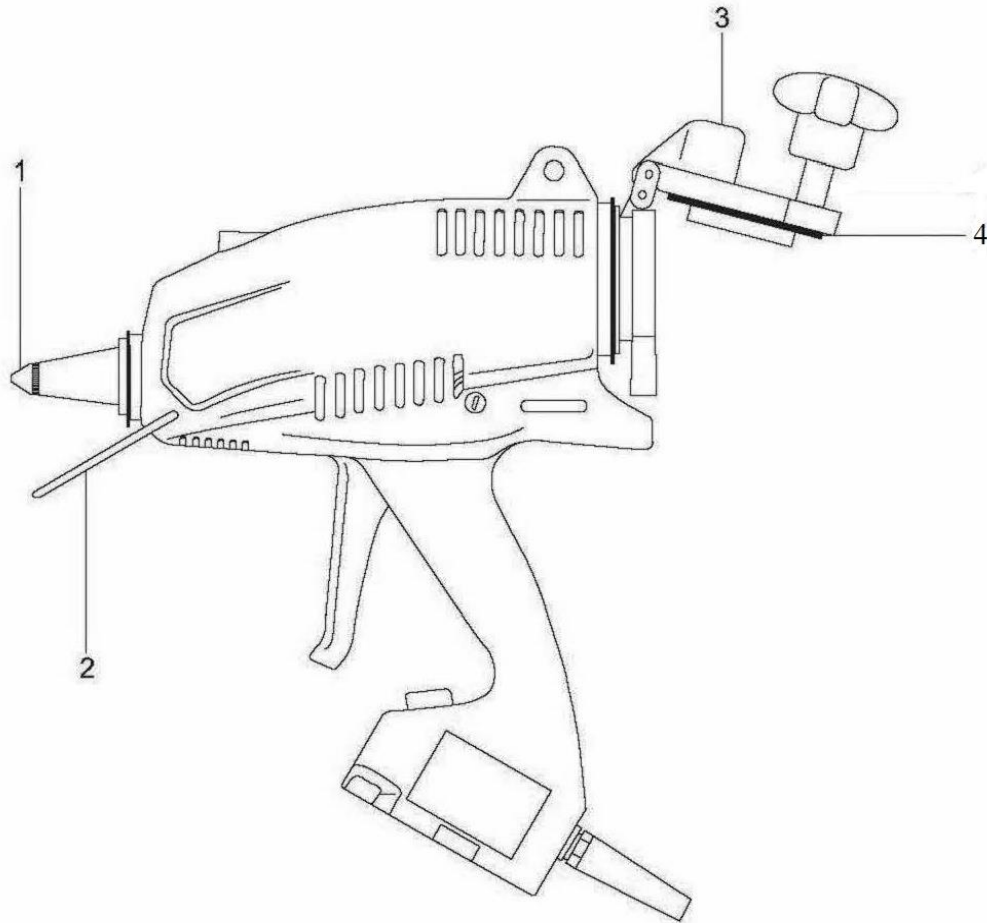
Champ™ 600 Hot Melt Glue Gun

Reattach Snap Ring #3354

- Make sure the snap ring is fitted into the gap intended when reattaching it.

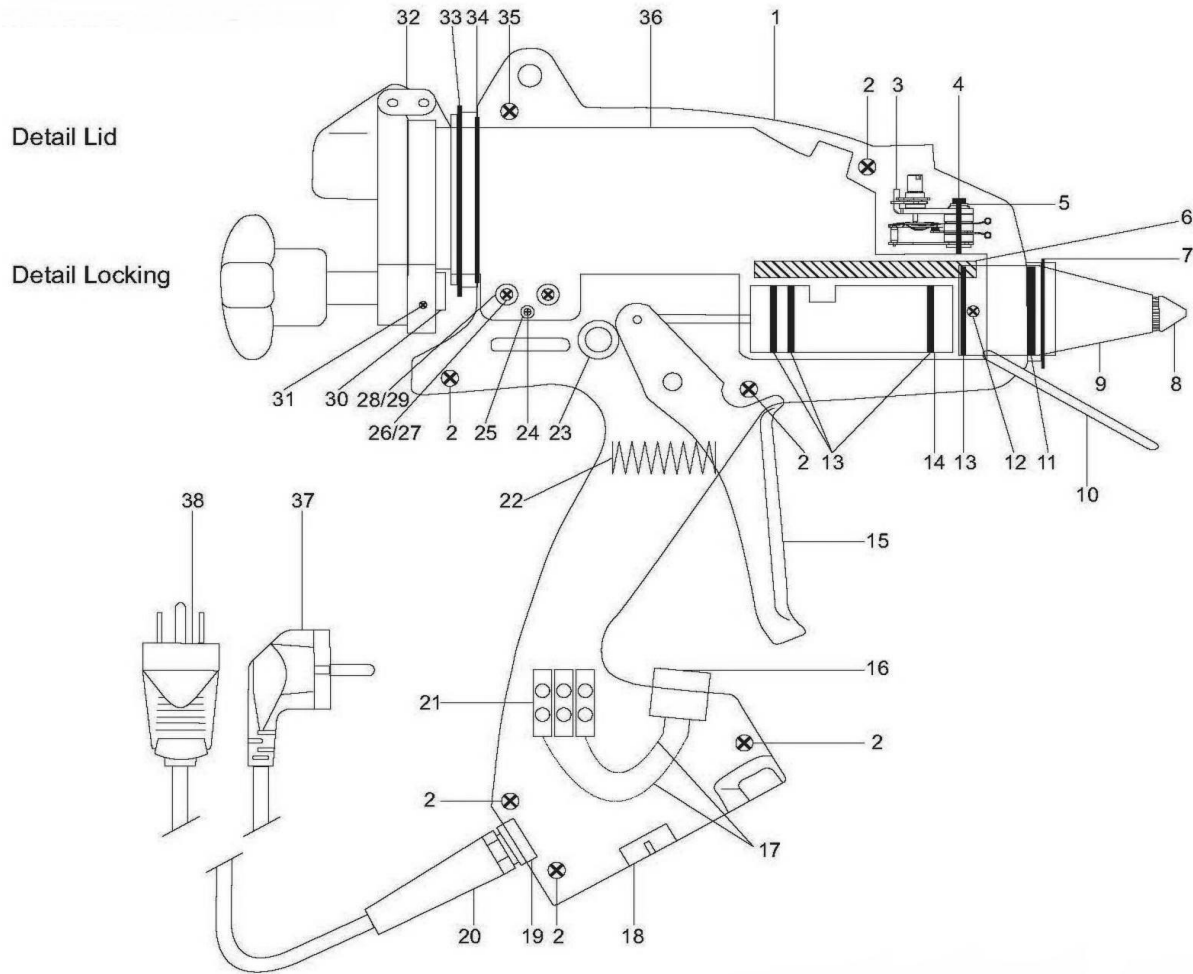


Drawings | Spare Parts



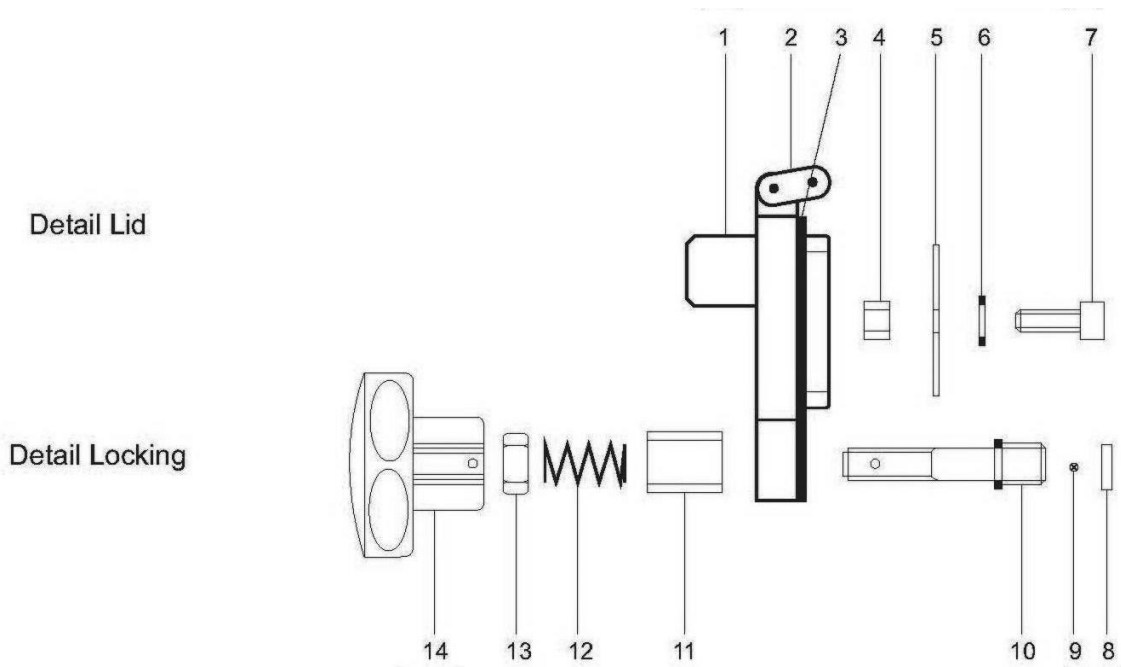
NO	PN	DESCRIPTION
1	2977	Nozzle 2.0mm
2	3345	Wire stand
3	3367	Lid
4	2603	O'ring 40 x 3
	3442	Wear & Tear set (2 x nozzle 2.0mm, 5 x o'ring 40 x 3)

Champ™ 600 Hot Melt Glue Gun



NO	PN	DESCRIPTION	NO	PN	DESCRIPTION
1	3480	Casing, yellow cpl.	20	3359	Antikink
2	3423	Screw Housing 3, 5 x 16	21	2622	Thermal block
3	3601	Thermostat	22	3790	Pressure spring
4	2532	Screw M4 x 25 / Thermostat	23	3353	Stroke arrester
5	3159	Tooth lock washer	24	2837	Earth cable
6	3495	Heater 230V spare part	25	3424	Thermo-fuse
6	3494	Heater 120V spare part	26	3381	Screw 3.5 x 25 fillister head
7	3354	Ring A 30	27	3382	Washer 4.3
8	2977	Nozzle M14 cpl. Pneum/ID 2.0	28	3873	Rivet
9	3385	Exit piece	29	3864	Insulation bush PTFE
10	3345	Wire stand	30	2884	Lock nut for lid release
11	3387	O'ring 23 x 3	31	2911	Cover safety screw
12	3013	Screw M 4 x 10	32	2617	Hinge link
13	3791	O'ring	33	3355	Ring A 58
14	3762	Piston cpl.	34	2947	O'ring SB-H 52 x 2.5
15	3939	Trigger cpl.	35	3363	Screw M3, 9 x 16
16	3415	Switch on/off	36	3475	Melting block
17	3446	Wire for pushbutton	37	3783	Cable 230V
18	3356	Magnet	38	3886	Cable 120V
19	3360	Nut antikink			

Champ™ 600 Hot Melt Glue Gun



NO	PN	DESCRIPTION
1	3367	Lid
2	2617	Hinge link
3	2603	O'ring 40 x 3
4	2820	Spacer
5	2819	Plate
6	2800	Disc
7	2801	Screw M6 x 16
8	2884	Lock nut for lid release
9	2911	Cover safety screw
10	3434	Threaded bolt
11	2885	Spacer bush
12	2718	Spring
13	3665	Lock nut M8
14	2613	Star grip

Additional Information

Environmental Protection

Dispose of electric products according to local regulations.

Packing material can be recycled completely.

Refer to the Safety Data Sheets for the disposal of hot-melt glues and hot-melt cartridges.

EC-Conformity Certificate

Product: Hot-Melt Glue Applicator

Type: Champ™ 600

This is to certify that the above applicator in the design marketed is in conformity with the following EC guidelines:

Until 15-01-2007:73/23/EEC, from 16-01-2007: 2006/95 EC
until 19-07-2009: 91/368 EEC, from 20-09-2009: 2004/108 EC
until 28-12-2009: 89/336 EEC, from 29-12-2009: 2006/42 EC
2002/95/EC

The following standards have been applied:

IEC CISPR14
IEC 60335
IEC 60204
IEC 61000

Design modifications influencing the technical data specified in the operating manual and the intended use, this meaning a considerable change of the device, render this conformity certificate invalid!

An original version of the operating instructions for the glue gun, in the national language of the user - here English - is enclosed.

Date: May 2011

Contact:

Glue Machinery Corporation
888-202-2468
info@gluemachinery.com
www.gluemachinery.com

CUSTOMER SERVICE POLICIES

Standard Parts:

- Customer Service will strive to ship stock parts within 24 hours of receipt of purchase order.
- Most non-stock parts will be available for shipment within 5-10 business days of receipt of purchase order.
- A \$50.00 minimum order is required on all orders.
- A 30% re-stock fee will apply to all returned parts received in new and operable condition within 30 days of shipment.

Special Parts:

- Special non-stock items may have considerable lead times. Customers who use special (non-stock) items are encouraged to keep these items in stock.
- Returns are acceptable at the sole discretion of Glue Machinery Corporation. No equipment or goods are to be returned without a Glue Machinery return authorization number. If an item is deemed returnable, a re-stocking fee of up to 50% will apply to special or non-stock items.

Shipments:

- Most shipments are routed U.P.S. Shipments over 150 pounds are forwarded via trucking service.
- Shipments will be routed by other means (air freight, bus, etc.) upon request.

Same day (24 hour) special handling:

- Rush orders are accepted. Orders received after 3:00 p.m. EST, will be assessed a handling charge of \$25.00.

NOTE: CUSTOMER SERVICE DIRECT DIAL PARTS - 1-888-202-2468

Prices and Terms subject to change without notice.

TECHNICAL SERVICE POLICIES

Repairs (at Glue Machinery Corporation facility):

- Items determined repairable are invoiced at cost of materials plus \$75.00/hour labor. Estimates will be made prior to any repair service.
- Most guns are repairable and should not be discarded. Please call Glue Machinery personnel to determine the feasibility of repairing questionable equipment.
- Customer is responsible for all freight charges.

Installation Supervision:

- Glue Machinery Corporation provides in plant technical supervision at a rate of \$850.00 per day, plus expenses.
- Two weeks notice is necessary to schedule Glue Machinery Corporation technical personnel.
- Customers are responsible for pre-installation preparation. Information is provided for machine and head mounting, electrical information, timing information, etc.
- Missed appointments, or those cancelled with less than 24 hours notice, will be charged at the full rate of \$850.00, plus expenses.
- If Customer is not prepared for a scheduled service visit, the day will be charged at \$850.00 plus expenses.

Technical Service (in-field repair):

- Technical service personnel are available to all Glue Machinery Corporation customers. Glue Machinery Corporation should be contacted at 888-202-2468 if a technician is needed.
- Service charges are: \$100.00/hour - Monday through Friday, plus expenses; and \$150.00/hour on weekends and holidays, plus expenses. Mileage is charged at \$0.52/mile. Minimum service charge is \$425.00 plus expenses. Under certain circumstances, time is charged from the time a Glue Machinery Corporation technician leaves his location until he returns to that location. The customer will be notified in advance of this situation and the customer must authorize these charges.

CONDITIONS OF SALE

1. **ACCEPTANCE** - Any purchase order issued in response to a Glue Machinery Corporation Quotation is considered to be Buyer's acceptance of the Terms & Conditions contained herein. Seller hereby objects to any additional, different or conflicting terms or conditions set forth in Buyer's purchase order. No terms, provisions, or conditions of Buyer's purchase order shall be effective unless expressly accepted by Seller in writing.
2. **ENTIRE AGREEMENT** - The provisions herein set forth, plus all drawings, constitute the entire contract between the Seller and the Buyer and supersede all prior Proposals, purchase orders, correspondence and other communications, whether written or oral, between the Seller and the Buyer. No provision of these conditions of Sale shall be subject to change except by the written authorization of a properly authorized representative of the Seller.
3. **PRICES-PAYMENT** - Terms of payment are as stated in the quotation. C.O.D. or prepayment will apply to new customers. Transactions are FOB Seller's factory exclusive of sales or use taxes. All payments shall be in the legal currency of the United States. All prices are subject to exception or change without notice. Pricing errors may be corrected at any time. The Seller may, at any time and without obligation, suspend performance or require payment in cash, security, or other adequate assurances satisfactory to the Seller when, in the opinion of the Seller in its sole discretion, the financial circumstances of Purchaser warrant such action.
4. **TAXES AND DUTIES** - The amount of all applicable taxes, (federal, state or local) will be charged unless the purchase order clearly states that the equipment or goods are tax exempt and an exemption certificate is on file at the Seller's location. Any personal property taxes assessable on the equipment or goods after delivery to the FOB point shall be borne by the Buyer.
5. **DELIVERY** - Deliveries shall be FOB Seller's plant freight collect. Buyer will keep the equipment or goods insured to the full purchase price with Seller as the named loss payee and Seller retains a security interest in the equipment or goods until the purchase price is paid.
6. **TITLE AND RISK OF LOSS** - Risk of loss or damage to the equipment or goods shall pass to Buyer F.O.B. Seller's plant. Buyer will keep the equipment or goods insured to the full purchase price with Seller as the named loss payee and Seller retains a security interest in the equipment or goods until the purchase price is paid.
7. **ENGINEERING DATA** - All Engineering data, design information, engineering and ship drawings used on the completion of this order are the property of the Seller.
8. **PATENT INDEMNIFICATION** - The Seller agrees to indemnify Buyer from and against all claims, demands and suits based on allegations that the equipment or goods designed and manufactured by Seller constitutes an infringement of any patent, if the Seller is notified promptly as the assertion of any such allegation, and if the Seller is given authority to defend the same and reasonable information and assistance for the defense of the same. Upon notification of an infringement claim, the Seller reserves the right to do any of the following, at no cost to the Buyer:
 - (a) Procure for the Buyer the right to continue using the equipment; or
 - (b) Replace the same with non-infringing equipment; or
 - (c) Modify the equipment so that it becomes non-infringing.

The Seller does not assume liability for the infringement of any method and/or process patent or for infringement of any patent covering articles manufactured or produced in accordance with Buyer's design.

Champ™ 600 Hot Melt Glue Gun

9. RETURNS - No equipment or goods requiring repair or alleged to be defective are to be returned without authorization by the Seller.
10. FREIGHT - Buyer is responsible for all freight and forwarding charges, import fees, customs fees, duties, taxes, etc.
11. WARRANTY AND LIMITATION OF LIABILITY - All equipment and goods are warranted by the Seller to be free from defects in material and workmanship as follows:

(A) ALL ITEMS EXCEPT ELECTRICAL COMPONENTS AND HOT MELT HOSES FOR A PERIOD OF SIX (6) MONTHS FROM DATE OF SHIPMENT OR ONE THOUSAND (1,000) HOURS OF USE, WHICHEVER OCCURS FIRST.

(B) FOR ELECTRICAL COMPONENTS FOR A PERIOD OF NINETY (90) DAYS FROM THE DATE THE EQUIPMENT OR GOODS WERE SHIPPED, AND

(C) FOR HOT MELT HOSES FOR A PERIOD OF SIX (6) MONTHS FROM DATE OF SHIPMENT.

THIS WARRANTY DOES NOT APPLY TO EQUIPMENT OR GOODS WHICH ARE, BY THE SOLE DISCRETION OF THE SELLER, MISUSED, OR ABUSED, OR DAMAGED FROM INSTALLATION, OR NOT USED IN ACCORDANCE WITH SELLER'S INSTRUCTIONS. NORMAL WEAR OF EQUIPMENT OR GOODS IS NOT INCLUDED IN THIS WARRANTY. Equipment or goods not manufactured by the Seller but supplied through the Seller shall carry the warranty of the original manufacturer.

THE SELLER'S SOLE LIABILITY UNDER THIS WARRANTY SHALL BE LIMITED TO EITHER REPLACING OR REPAIRING WITHOUT CHARGE, AT ITS FACTORY OR ELSEWHERE AT ITS DISCRETION, ANY EQUIPMENT OR GOODS NOT MEETING THIS WARRANTY, OR AT SELLER'S OPTION REFUNDING THE PURCHASE PRICE. THE SELLER SHALL IN NO EVENT BE LIABLE FOR ANY OTHER DIRECT, OR ANY SPECIAL INDIRECT OR CONSEQUENTIAL DAMAGES OF ANY KIND UNDER THIS CONTRACT OR OTHERWISE. The warranties of the Seller do not cover, and the Seller makes no warranty with respect to any defect, failure, deficiency or error that is:

(a) Not timely reported to the Seller, or

(b) Due to misapplication, modification, disassembly, abnormal conditions of temperature, dirt or corrosive matter; or

(c) Due to operation, either intentional or otherwise, above rated capacities or in an otherwise improper manner.

Seller assumes no responsibility for the quality or performance of coatings, adhesives or other materials used with Seller's equipment or goods. All claims must be brought within one (1) year of sale or identification of a defect. THERE ARE NO OTHER WARRANTIES, EXPRESS OR IMPLIED, INCLUDING THE IMPLIED WARRANTIES OF MERCHANTABILITY AND FITNESS FOR A PARTICULAR PURPOSE.

12. **GOVERNING LAW: ANY CONTRACT RESULTING OUT OF THIS PROPOSAL SHALL BE GOVERNED BY THE LAWS OF THE STATE OF MARYLAND. Any legal action to enforce any right granted by this contract must be filed within one (1) year after delivery or for warranty claims within one (1) year of the expiration of the applicable warranty period.**

Champ™ 600 Hot Melt Glue Gun

NOTES: