



ANU
UNREAL
SNOWBOARDING



SPEED/IN

**SPEED ENTRY BINDING SYSTEM
FASTER, EASIER, SMARTER**

2016/2017

16/17

MENS/WOMENS/YOUTH

SPEED/IN
SPEED ENTRY BINDING SYSTEM

MENS



GRAY

BLUE

NEW
MULTI-ENTRY

GATEWAY



GREEN

BLACK

NEW
MULTI-ENTRY

PSYCH



BLACK

ORANGE

NEW
MULTI-ENTRY

FREEDOM

WOMENS



WHITE

BLACK

NEW
MULTI-ENTRY

B-REAL



RED

NEW
MULTI-ENTRY

B-FORWARD



BLACK

NEW
MULTI-ENTRY

B-FREE

YOUTH



WHITE

GNUNIOR

ANU

**FASTER
EASIER
SMARTER
MULTI ENTRY!**

NOW

ANU

1

2

3

4



SPEED/IN

SPEED ENTRY BINDING SYSTEM

Rear entry bindings now with conventional functionality option!
Locking micro buckle on toe and ankle.

UNIQUE TECHNOLOGY

1. **Reclining Highback** - Rear Entry Advantage
 2. **Auto Open Ankle Strap** - Opens Auto *MAGICALLY!*
 3. **Auto Lever** - Simplified Entry
 4. **Cable Redirection** - Unimpeded Movement
- Lifetime Baseplate Warranty**



ANU



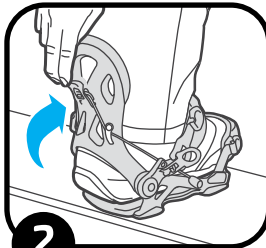
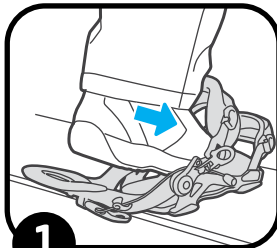
SPEED/IN

SPEED ENTRY BINDING SYSTEM
FASTER, EASIER, SMARTER

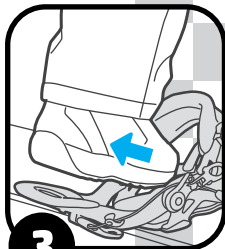
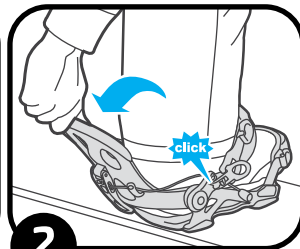
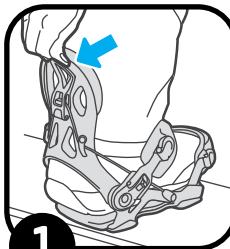


Lightweight,
performance and
strength in an
incredibly fast
binding system!

Easy In



Easy Out





SIZE TABLE

Mens / Kids



KIDS SERIES

US	1	2	3	4	5	6
	XS					

PERFECT



Gnuniior

FT4 SERIES

MENS

MP	22	23	24	25	26	27	28	29	30	31	32
US	4	5	6	7	8	9	10	11	12	13	14
	S			M				L			

PERFECT
CENTERED BY DISC/HIGHBACK



Gateway

SLAB SERIES

MENS

MP	22	23	24	25	26	27	28	29	30	31	32
US	4	5	6	7	8	9	10	11	12	13	14
	M			L			XL				

PERFECT
CENTERED BY DISC/HIGHBACK



Psych | Freedom



SIZE TABLE

Womens



FT4 SERIES Womens

MP	21	22	23	24	25	26	27
USw	4	5	6	7	8	9	10
				M/L			
	S/M						

PERFECT
CENTERED BY DISC/HIGHBACK



B-Real

SLAB SERIES Womens

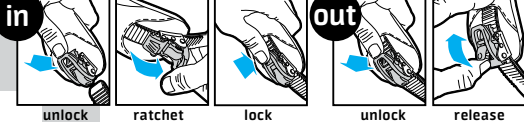
MP	22	23	24	25	26	27	28
USw	5	6	7	8	9	10	11
						L	
				M			
	S						

PERFECT
CENTERED BY DISC/HIGHBACK



B-Free | B-Forward

MICRO BUCKLE *except Gnujor



TIGHTENING AND LOCKING BUCKLE

1. Insert ladder strap into buckle, pull upward on lever to unlock buckle if needed.
2. Tighten to desired tension.
3. Push ratchet lever down to lock position of buckle. This prevents unwanted movement and size adjustment of strap while boot is out of binding.

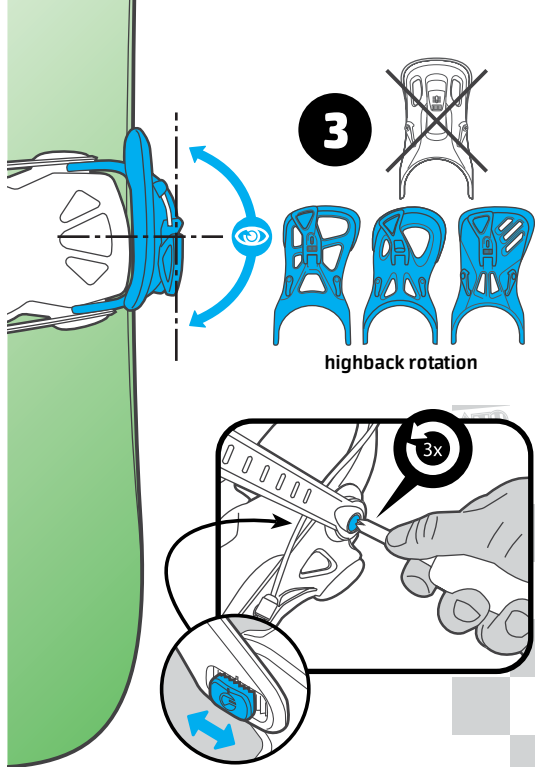
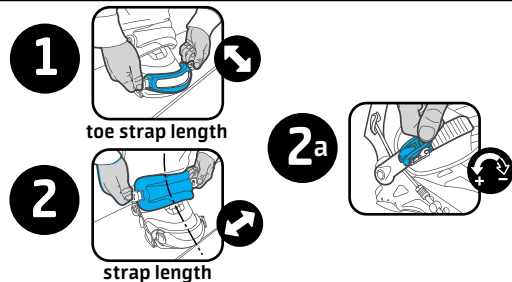
RELEASING BUCKLE

1. Pull upward on lever to unlock buckle.
2. Pull on release tab to loosen or release buckle completely.

The Micro Buckle 2 operates like a classic buckle with the additional function of a lock mechanism. The lock mechanism prevents the strap from changing length while the binding is open and the boot is out.

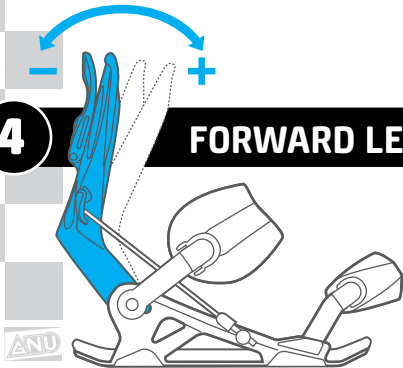
HELPFUL HINT!

Be sure Auto Lever is down when adjusting tension of your ankle strap.

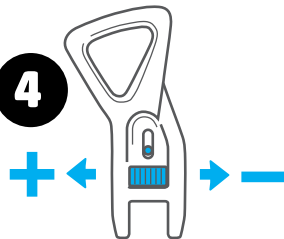


4

FORWARD LEAN

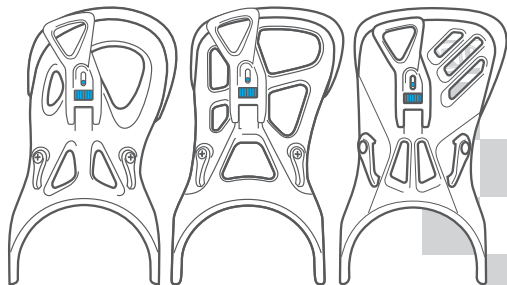


4

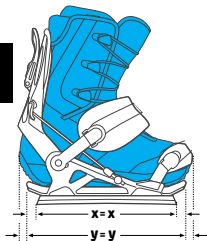


SPEED/IN

SPEED ENTRY BINDING SYSTEM
FASTER, EASIER, SMARTER



CENTER BINDINGS



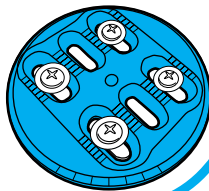
Disk Options:

FT-Kido
baseplate
Gnuniur

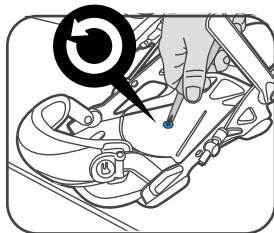
FT-4
baseplate
Gateway
B-Real

sLAB
baseplate
Psych, Freedom,
B-Free, B-Forward

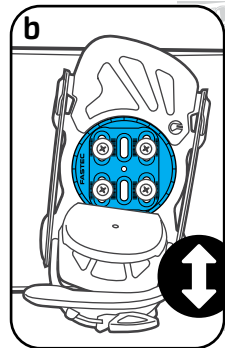
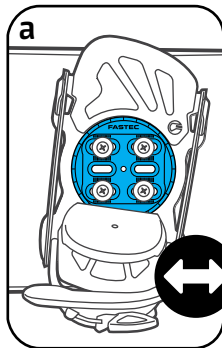
sLAB
baseplate
Psych, Freedom,
B-Free, B-Forward



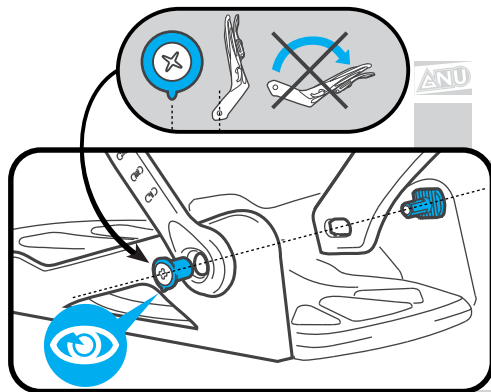
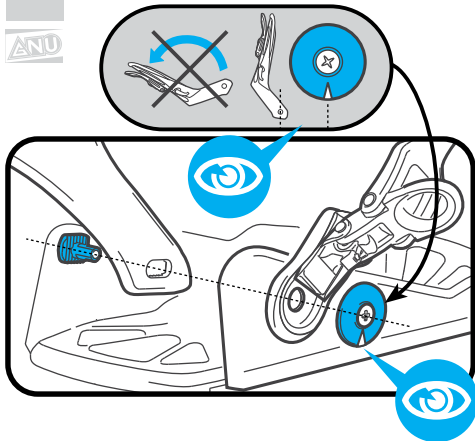
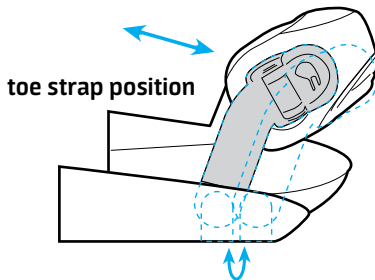
5 MOUNTING



	DSC002	DSC003	DSC004	DSC013
4x4				
	DSC003		DSC013	
Channel				
	DSC002		*PLA210	
3D			*Go to GNU.COM for seperately sold disks	

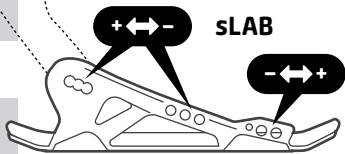


HIGHBACK REMOVAL

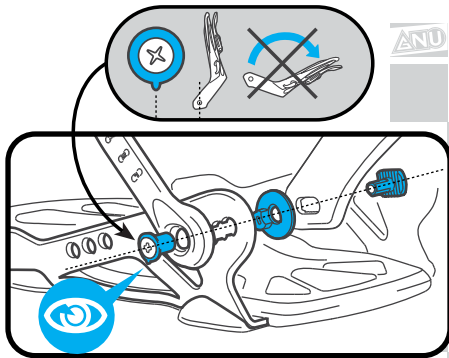
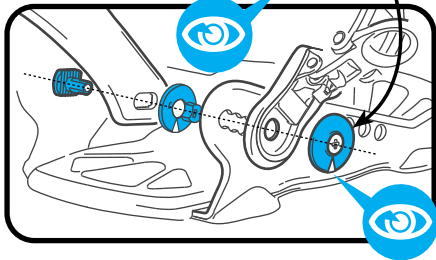
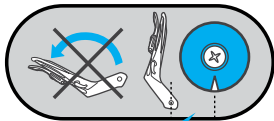
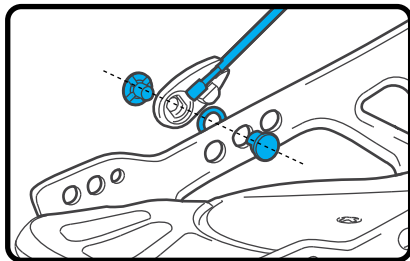


ADVANCED SIZE SET UP

Psych | Freedom | B-Free | B-Forward



ANU



ANU

Pre Riding Check List:

- Double check all your binding screws, bolts and straps. All hardware should be securely tightened. A few minutes here will save you an hour on the hill.
- Snowboard specific footwear should be used at all times.
- Know the skier's responsibility code.
- Remember, these bindings are not designed to release.

Post Riding Check List:

- Wipe off your snowboard. Don't bash it in the pavement. Put it where it can easily dry away from direct heat.
- Tune and wax your snowboard. A well tuned snowboard is easier to ride and more responsive. Wax protects your base and makes your snowboard faster, if you use the right kind! We recommend ONE BALL JAY snowboard wax products. We recommend you tune your snowboard about every 5 riding days or when you want to out shred your friends on the hill.
- Check over your bindings. Re-fasten your straps and buckles. Use a board bag to protect your board and bindings from dirt while in a car rack or travelling. A board bag will also improve your image by letting people know you are a super tech and dialed snowboarder!

Help?



GNU.COM

WARNING!

Snowboarding is an active, outdoor, winter sport that involves inherent risks, which can result in serious, even fatal, injuries. Boarders must be aware of the risks and assume responsibility for their actions. The inherent risks in snowboarding arise from, among other things, variations in snow cover, composition and gradient, possible collisions with fixed and moving, natural and man-made objects, other snowboarders, your snowboard and/or bindings, and include the risk of suffocation. This boot/binding interface is designed so that it does not release, which may increase certain of these risks depending on the particular circumstances.

Prior to each use these bindings should be inspected to make sure that parts are not worn, damaged, missing or loose. Even under normal conditions a binding may break which can increase the risk of injury.

The risks inherent in the sport of snowboarding can be greatly reduced by wearing protective equipment, by taking lessons, and by riding under control, within your limits and with a buddy at all times.

By purchasing and/or using these bindings, you acknowledge and voluntarily assume and accept any and all known and unknown risks while using these bindings and hereby release Mervin Manufacturing from all liability.

All Gnu bindings are guaranteed against manufacturer's defects for one year.

Snowboarding is an active outdoor winter sport that can have a significant risk of personal injury. However, the risk of serious injury can be greatly reduced by taking lessons, riding under control at all times, obeying "your responsibility code" and above all using common sense. The boot/binding interface is designed so that it does not release. It is Gnu's opinion that this is a safe boot binding interface.

Your leash should be attached to you at all times. Whether riding, hiking or walking so as to prevent run away snowboards from injuring someone else. Also, please make certain that your snowboard is secure when not being used so that it doesn't inadvertently start down the hill without you attached.