

**KAITLYN  
FARRINGTON**



EASY IN, EASY OUT!

# EASY RIDER

**SPEED ENTRY BINDING SYSTEMS**



2014/2015

Street



EASY IN, EASY OUT!

# EASY RIDER

SPEED ENTRY BINDING SYSTEMS

Psych



B-Real



Mutant



B-Free



Front Door



Outdoor



GNU X KARAKORAM  
**OUTDOOR  
SPLITBOARD  
BINDING**

Gnuniior



**ANU**

**CLICK,  
CLICK,  
RIDE!**



# CLICK, CLICK, RIDE!

## EASY RIDER

SPEED ENTRY BINDING SYSTEMS

### 1. RECLINING HIGHBACK

Makes entry and exit incredibly fast and easy with one hand! No more fumbling with ratchet buckles and ladders.

### 2. AUTO OPEN LEVER

Auto Open Lever opens strap automatically when highback is lowered. Close easily with one click. Magic!

### 3. MICRO BUCKLE

With the Micro Buckle a rider can easily adjust strap tension on the go.

### 4. PRESSURE RELIEF BUTTON

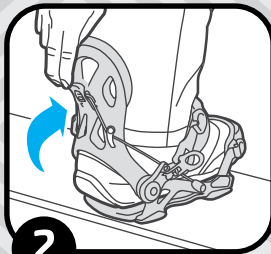
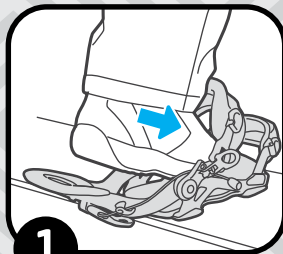
Relief Button can be pressed to relax ankle strap pressure and increase circulation on your front foot.



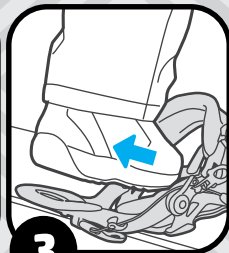
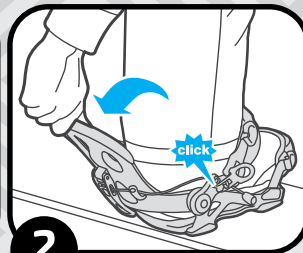
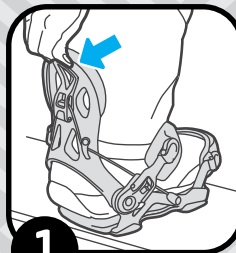
# EASY RIDER

SPEED ENTRY  
BINDING SYSTEMS

## Easy In



## Easy Out



Lightweight, performance and strength in an incredibly fast binding system!

**CLICK, CLICK, RIDE...**

**Mt. Weird is calling you!**

# SIZE TABLE

mens / kids

## KID SERIES

US	1	2	3	4	5	6
	XS					

PERFECT



Gjunior

## FT4 SERIES

### MEN

MP	22	23	24	25	26	27	28	29	30	31	32
US	4	5	6	7	8	9	10	11	12	13	14
	S			M			L				

PERFECT

CENTERED BY DISC/HIGHBACK



Front Door | Street

## SLAB SERIES MEN

MP	22	23	24	25	26	27	28	29	30	31	32
US	4	5	6	7	8	9	10	11	12	13	14
	M			L			XL				

PERFECT

CENTERED BY DISC/HIGHBACK



Psych | Mutant

# SIZE TABLE

## womens

### FT4 SERIES

MP	21	22	23	24	25	26	27
USw	4	5	6	7	8	9	10
				M/L			
		S/M					

### GIRLS

PERFECT  
CENTERED BY DISC/HIGHBACK



B-Real

### SLAB SERIES GIRLS

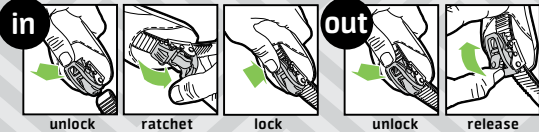
MP	22	23	24	25	26	27	28
USw	5	6	7	8	9	10	11
						L	
			M				
		S					

PERFECT  
CENTERED BY DISC/HIGHBACK



B-Free

# MICRO BUCKLE \*except Front Door and Gnujior



## TIGHTENING AND LOCKING BUCKLE

1. Insert ladder strap into buckle, pull upward on lever to unlock buckle if needed.
2. Tighten to desired tension.
3. Push ratchet lever down to lock position of buckle. This prevents unwanted movement and size adjustment of strap while boot is out of binding.

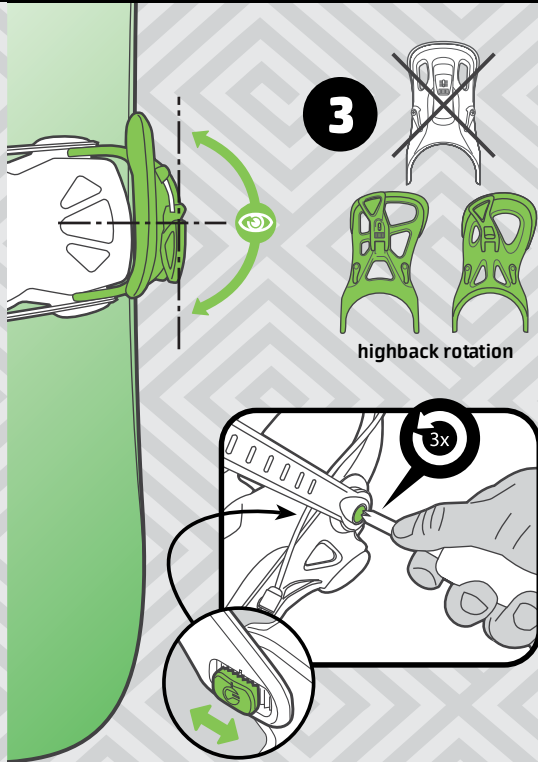
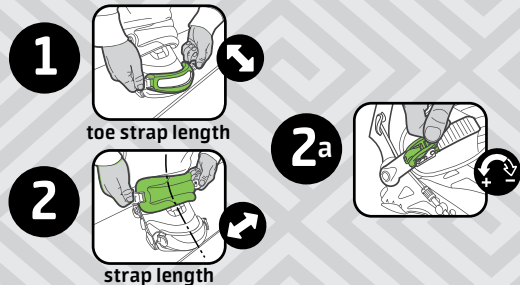
## RELEASING BUCKLE

1. Pull upward on lever to unlock buckle.
2. Pull on release tab to loosen or release buckle completely.

The Micro Buckle 2 operates like a classic buckle with the additional function of a lock mechanism. The lock mechanism prevents the strap from changing length while the binding is open and the boot is out.

## HELPFUL HINT!

Be sure Auto Lever is down when adjusting tension of your ankle strap.

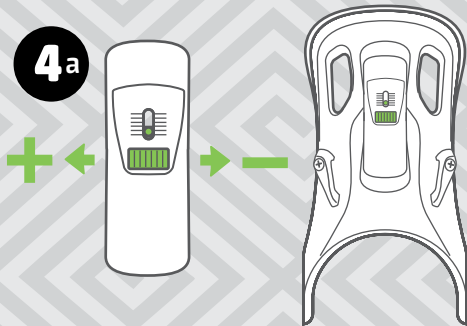


4

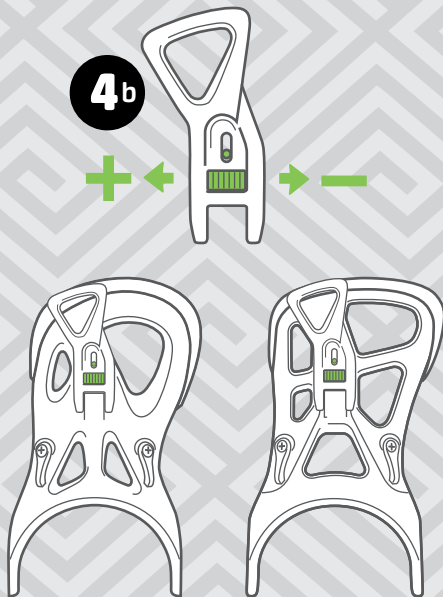
FORWARD LEAN



4a



4b

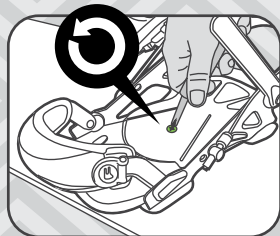
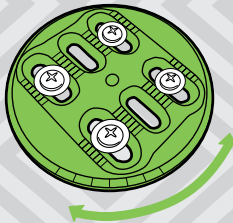




# CENTER BINDINGS



# 5 MOUNTING



## Disk Options:

**FT-Kido**  
baseplate  
Gnuniur

**FT-4**  
baseplate  
Frontdoor  
Street  
B-Real

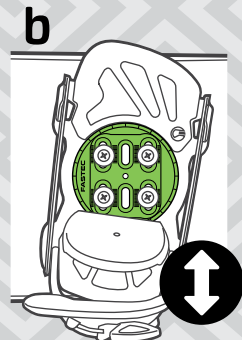
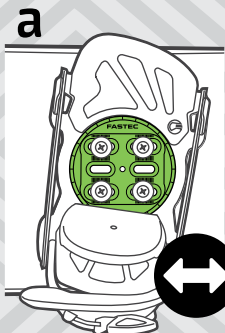
**SLAB**  
baseplate  
Psych  
Mutant  
B-Free

**SLAB**  
baseplate  
Psych  
Mutant  
B-Free

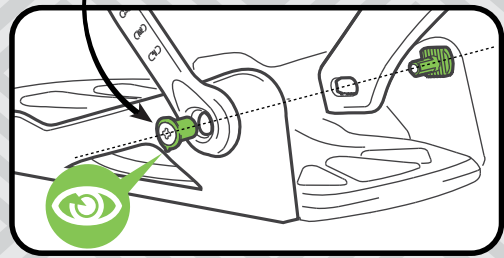
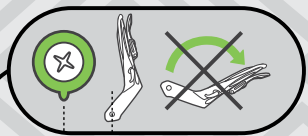
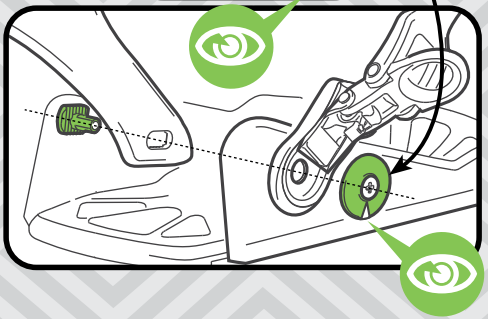
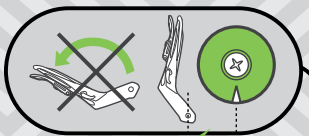
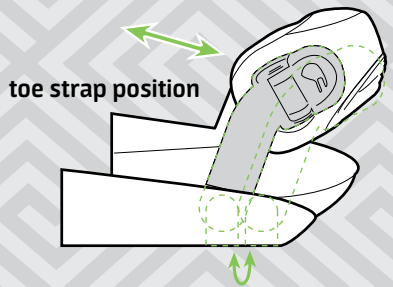
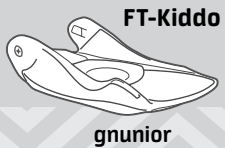
	DSC002	DSC009	DSC004	PLA210
4x4				
3D				
		<b>DSC010*</b>		<b>PLA217*</b>

### Channel

\*Channel compatible disks for sale seperately

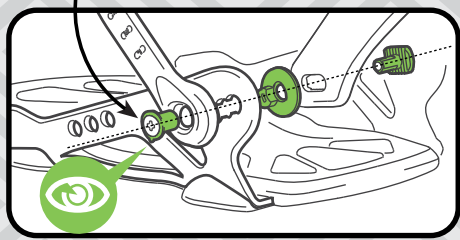
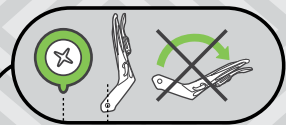
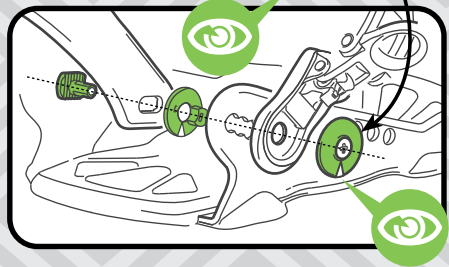
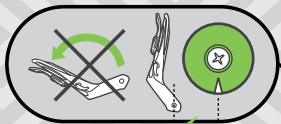
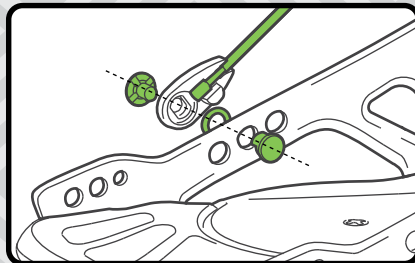


# HIGHBACK REMOVAL



# ADVANCED SIZE SET UP

psych | mutant | b-free



## Pre Riding Check List:

- Double check all your binding screws, bolts and straps. All hardware should be securely tightened. A few minutes here will save you an hour on the hill.
- Snowboard specific footwear should be used at all times.
- Know the skier's responsibility code.
- Remember, these bindings are not designed to release.

## Post Riding Check List:

- Wipe off your snowboard. Don't bash it in the pavement. Put it where it can easily dry away from direct heat.
- Tune and wax your snowboard. A well tuned snowboard is easier to ride and more responsive. Wax protects your base and makes your snowboard faster, if you use the right kind! We recommend ONE BALL JAY snowboard wax products. We recommend you tune your snowboard about every 5 riding days or when you want to out shred your friends on the hill.
- Check over your bindings. Re-fasten your straps and buckles. Use a board bag to protect your board and bindings from dirt while in a car rack or travelling. A board bag will also improve your image by letting people know you are a super tech and dialed snowboarder!

## Help?



## WARNING!

Snowboarding is an active, outdoor, winter sport that involves inherent risks, which can result in serious, even fatal, injuries. Boarders must be aware of the risks and assume responsibility for their actions. The inherent risks in snowboarding arise from, among other things, variations in snow cover, composition and gradient, possible collisions with fixed and moving, natural and man-made objects, other snowboarders, your snowboard and/or bindings, and include the risk of suffocation. This boot/binding interface is designed so that it does not release, which may increase certain of these risks depending on the particular circumstances.

Prior to each use these bindings should be inspected to make sure that parts are not worn, damaged, missing or loose. Even under normal conditions a binding may break which can increase the risk of injury.

The risks inherent in the sport of snowboarding can be greatly reduced by wearing protective equipment, by taking lessons, and by riding under control, within your limits and with a buddy at all times.

By purchasing and/or using these bindings, you acknowledge and voluntarily assume and accept any and all known and unknown risks while using these bindings and hereby release Mervin Manufacturing from all liability.

## All Gnu bindings are guaranteed against manufacturer's defects for one year.

Snowboarding is an active outdoor winter sport that can have a significant risk of personal injury. However, the risk of serious injury can be greatly reduced by taking lessons, riding under control at all times, obeying "your responsibility code" and above all using common sense. The boot/binding interface is designed so that it does not release. It is Gnu's opinion that this is a safe boot binding interface.

Your leash should be attached to you at all times. Whether riding, hiking or walking so as to prevent run away snowboards from injuring someone else. Also, please make certain that your snowboard is secure when not being used so that it doesn't inadvertently start down the hill without you attached.