



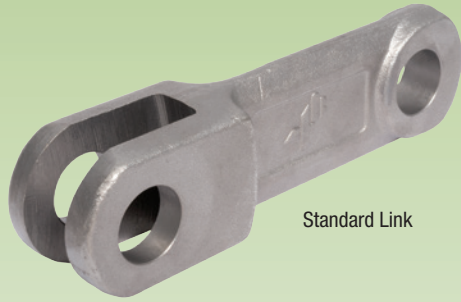
# ***Drop Forged Chain***



*A complete line of drop forged chain and accessories  
engineered for all your conveying needs.*

*BETTER BY DESIGN*

## Drop Forged Chain



Standard Link

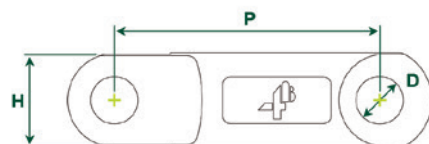
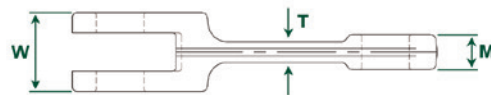
4B's drop forged chain is made of special heat treated alloy steel case hardened to Rockwell C57 - C62 with a ductile core hardness of Rockwell C40.

4B's superior heat treatment technique provides the optimum chain link with a more resilient ductile core for shock resistance, and an extremely hard exterior surface for superior wear resistance.

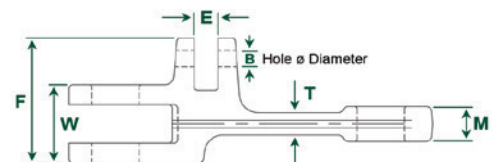
4B's drop forged chain is backed by an international network of companies with over 125 years of experience, and a global team of engineers and sales professionals that can provide you with practical solutions for all your material handling applications.

Chain Link	4B 102LA	4B 102NA	4B 125NA	4B 142LA	4B 142NA	4B 142HA	4B 150NA	4B 160NA	4B 175NA	4B 200NA	4B 216NA	4B 250NA	4B 260NA
<b>Minimum Breaking Load</b>	150 kN 33,750 lb	180 kN 40,400 lb	200 kN 44,900 lb	250 kN 56,250 lb	300 kN 67,500 lb	450 kN 101,000 lb	300 kN 67,500 lb	350 kN 78,700 lb	520 kN 117,500 lb	600 kN 135,000 lb	600 kN 135,000 lb	700 kN 158,000 lb	700 kN 158,000 lb
<b>Case Hardness</b>	Rockwell C57 - C62	Rockwell C57 - C62	Rockwell C57 - C62	Rockwell C57 - C62	Rockwell C57 - C62	Rockwell C57 - C62	Rockwell C57 - C62	Rockwell C57 - C62	Rockwell C57 - C62	Rockwell C57 - C62	Rockwell C57 - C62	Rockwell C57 - C62	Rockwell C57 - C62
<b>Case Depth</b>	0.5 mm	0.5 mm	0.6 mm	0.7 mm	0.7 mm	0.7 mm	0.7 mm	0.8 mm	1.0 mm	1.0 mm	1.0 mm	1.0 mm	1.0 mm
<b>Core Hardness</b>	Rockwell C40	Rockwell C40	Rockwell C40	Rockwell C40	Rockwell C40	Rockwell C40	Rockwell C40	Rockwell C40	Rockwell C40	Rockwell C40	Rockwell C40	Rockwell C40	Rockwell C40
<b>Weight (Per Link)</b>	0.36 kg	0.38 kg	0.70 kg	0.66 kg	1.08 kg	1.76 kg	1.20 kg	1.30 kg	2.73 kg	2.85 kg	3.66 kg	4.26 kg	5.38 kg
<b>Bolt 'N' Go™ Compatible</b>	No	Yes	Yes	No	Yes	Yes	Yes	Yes	No	Yes	No	No	No
<b>Dimensions</b>													
<b>P</b>	102 mm	102 mm	125 mm	142 mm	142 mm	142 mm	150 mm	160 mm	175 mm	200 mm	216 mm	250 mm	260 mm
<b>H</b>	36 mm	36 mm	35 mm	40 mm	50 mm	50 mm	49 mm	44.5 mm	60 mm	60 mm	75 mm	75 mm	75 mm
<b>T</b>	6 mm	7 mm	10 mm	10 mm	12 mm	16.5 mm	13 mm	13 mm	22 mm	18 mm	21 mm	18 mm	21 mm
<b>W</b>	25 mm	28 mm	36 mm	31 mm	42 mm	62 mm	36 mm	42 mm	63 mm	68 mm	61 mm	70 mm	71 mm
<b>M</b>	8 mm	12 mm	15 mm	14 mm	18.7 mm	28.5 mm	15 mm	19.5 mm	30 mm	30 mm	26 mm	32 mm	31 mm
<b>D</b>	14 mm	14 mm	16 mm	18.2 mm	25 mm	25 mm	25 mm	20 mm	30 mm	30 mm	35 mm	32 mm	32 mm
<b>F</b>	---	---	---	---	---	---	---	---	---	---	---	---	---
<b>E</b>	---	---	---	---	---	---	---	---	---	---	---	---	---
<b>B</b>	---	---	---	---	---	---	---	---	---	---	---	---	---

- Links & Pins Are Available In 304, 316 & 420 Stainless Steel



Standard Link



Double Link

## Double & Triple Links

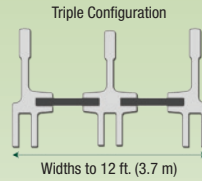


Double Link

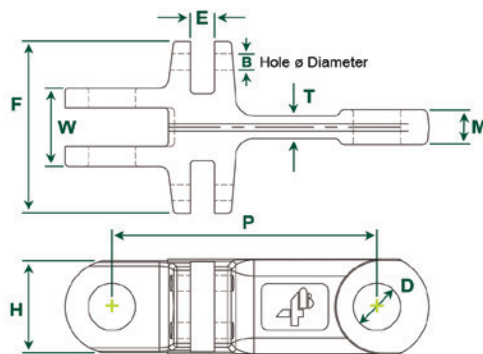
4B's double and triple links are forged with the same quality, strength and durability as our standard links



Triple Link



Chain Link	4B 142DNA	4B 142DHA	4B 142TNA	4B 142THA	4B 175DNA
Minimum Breaking Load	300 kN 67,500 lb	450 kN 101,000 lb	300 kN 67,500 lb	450 kN 101,500 lb	520 kN 117,500 lb
Case Hardness	Rockwell C57 - C62	Rockwell C57 - C62	Rockwell C57 - C62	Rockwell C57 - C62	Rockwell C57 - C62
Case Depth	0.7 mm	0.7 mm	0.7 mm	0.7 mm	1.0 mm
Core Hardness	Rockwell C40	Rockwell C40	Rockwell C40	Rockwell C40	Rockwell C40
Weight (Per Link)	1.37 kg	2.00 kg	1.67 kg	2.32 kg	3.17 kg
Bolt 'N' Go™ Compatible	No	No	No	No	No
<b>Dimensions</b>					
P	142 mm	142 mm	142 mm	142 mm	175 mm
H	50 mm	50 mm	50 mm	49 mm	60 mm
T	12 mm	16 mm	12 mm	16 mm	22 mm
W	42 mm	62 mm	42 mm	62 mm	63 mm
M	18.7 mm	28 mm	18.7 mm	28.5 mm	30 mm
D	25 mm	25 mm	25 mm	25 mm	30 mm
F	67 mm	87 mm	92 mm	112 mm	87 mm
E	13 mm	13 mm	13 mm	13 mm	16 mm
B	8.5 mm	8.5 mm	8.5 mm	8.5 mm	10.5 mm



Triple Link

## Bolt 'N' Go™

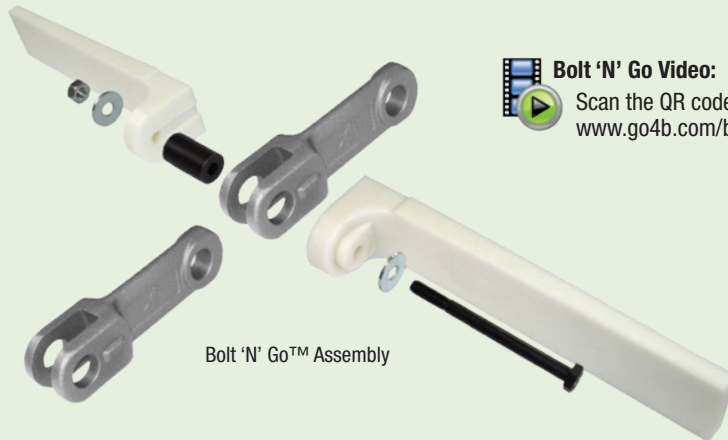
The Bolt 'N' Go™ flight system is a revolutionary assembly method for drop forged. Link and flight assembly is made easy by using a standard bolt and mechanical lock nut with a high strength hollow pin. There are no circlips and no intricate assembly required. There is no welding of flights, no need to remove chain from the conveyor for installation, and no issues with strength. Just bolt the links and the flights together. It's easy, simple and reliable!

Bolt 'N' Go™ -  
U.S. Pat. 7,080,728  
Mexican Pat. 272,056  
Canadian Pat. 2,548,660  
Other Patents Pending



Bolt 'N' Go™ Chain	Nylon Flight Maximum Width
4B102BNA	390 mm / 15.35 in
4B142BNA	752 mm / 29.60 in
4B142BHA	772 mm / 30.40 in

**NOTE:** 4B125BNA, 4B150BNA, 4B160BNA & 4B200BNA Chain  
Also Available, Contact 4B For More Information



Bolt 'N' Go™ Assembly

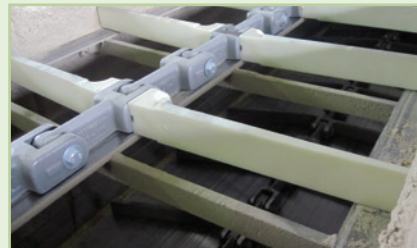


### Bolt 'N' Go Video:

Scan the QR code or visit  
[www.go4b.com/bolt-n-go](http://www.go4b.com/bolt-n-go)



Feed Mill Application Using  
4B142BNA Bolt 'N' Go™



Grain Application Using  
4B142BHA Bolt 'N' Go™

# Sprockets and Trailers

4B sprockets and trailers are manufactured from high grade heat treated steel to a hardness of Rockwell C53 - C57. Each piece is machined to size with appropriate bore and keyway specific to each customer's application. Most sizes are in stock and ready to ship from 4B's extensive inventory.

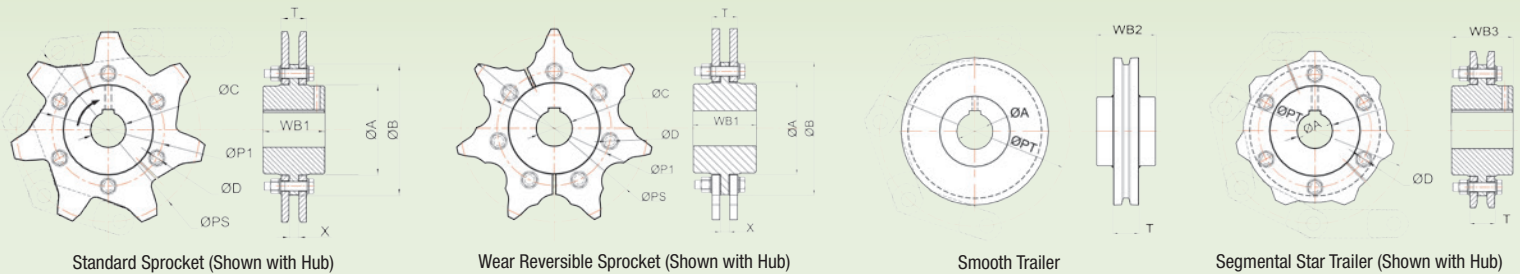
**NOW AVAILABLE!**  
Segmental Star and Self Cleaning Trailers



Sprocket & Trailer Inventory



**Drop Forged Chain Video:**  
Scan the QR code or visit [www.go4b.com/chain](http://www.go4b.com/chain)



Chain Link	No. of Teeth	Sprockets										Trailers				
		ØPS (mm)	ØP1 (mm)	ØA (mm)	ØB (mm)	ØC (mm) Max.	ØD (mm)	N No. of Holes	T (mm)	X (mm)	WB1 (mm)	Max. Shaft Dia. ØA (mm)	Pitch Circle Dia. ØPT (mm)	Hub Width Dia.* (mm)		Rim Width Dia. T (mm)
														Smooth WB2	Segmental WB3	
4B102NA	6	204.0	---	105.0	135.0	70	---	---	30	10	83	65	204.0	57	83	35
	7	235.1	146.0	108.0	173.0	70	M12	6	30	10	83	65	235.1	57	83	35
	8	266.5	170.0	144.0	196.0	85	M12	6	30	10	83	65	266.5	57	83	35
	9	298.2	200.0	174.0	232.0	105	M12	6	30	10	83	65	298.2	57	83	35
	10	330.1	241.3	179.0	264.0	105	M12	8	30	10	83	65	330.1	57	83	35
4B142NA	6	284.0	168.3	136.5	190.5	85	M12	6	46	16	112	85	284.0	74	112	45
	7	327.3	200.0	162.0	234.0	105	M16	6	46	16	112	85	327.3	74	112	45
	8	371.1	241.3	187.3	282.0	115	M20	8	46	16	127	85	371.1	77	127	45
	9	415.2	285.8	240.0	330.0	150	M20	8	46	16	127	115	415.2	77	127	45
	10	459.5	285.8	240.0	330.0	150	M20	8	46	16	127	115	459.5	77	127	45
	11	504.0	368.3	310.0	419.0	170	M20	8	46	16	150	115	504.0	105	150	45
	12	548.6	415.0	345.0	465.0	170	M20	8	46	16	150	115	548.6	105	150	45
	13	593.4	470.0	380.0	521.0	170	M20	8	46	16	150	115	593.4	120	150	45
4B142HA	7	327.3	200.0	162.0	234.0	105	M16	6	69	19	127	115	327.3	110	127	75
	8	371.1	241.3	187.3	282.0	115	M20	8	69	19	150	115	371.1	110	150	75
	9	415.2	285.8	240.0	330.0	150	M20	8	69	19	150	115	415.2	110	150	75
	10	459.5	285.8	240.0	330.0	150	M20	8	69	19	150	115	459.5	120	150	75
	11	504.0	368.3	310.0	419.0	170	M20	8	69	19	150	140	504.0	120	150	75
	12	548.6	415.0	345.0	465.0	170	M20	8	69	19	150	140	548.6	120	150	75
	13	593.4	470.0	380.0	520.0	170	M20	8	69	19	180	140	593.4	120	150	75
	14	638.1	470.0	380.0	546.0	170	M20	10	69	19	180	140	638.1	140	150	75

**NOTE:** 125NA, 150NA, 160NA, 175NA, 200NA, 216NA, 250NA & 260NA Sizes Also Available, Contact 4B For More Information

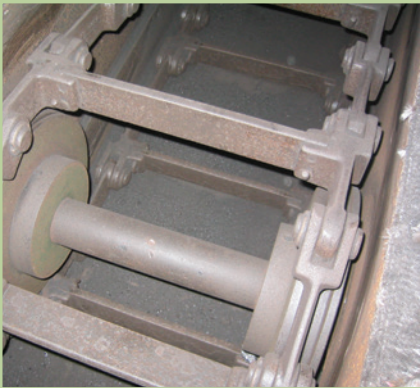
\* Smooth & Segmental Trailers Have Different Hub Widths As Noted (WB2 & WB3)

- 4B Offers Any Bore Size To Suit Your Requirements, Consult A 4B Sales Engineer For Recommended Shaft Diameter

- Specially Designed Sprockets & Stub Trailers Are Required For Double & Triple Links, Consult A 4B Sales Engineer For Information On Your Specific Application



## Application Photos



4B142DNA Double Strand Chain Moving Ash



4B142HA Chain With UHMW Paddles On Flat Bar Flights Moving 20K BPH Of Corn



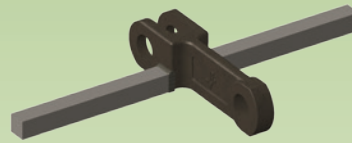
4B142HA Chain With UHMW Paddles On Flat Bar Flights - Drive End Shown



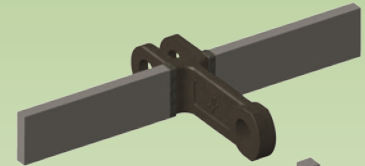
4B142HA Chain With Return Cup And UHMW Paddles On Flat Bar Flights - Tail End Shown

## Welded Flights and Pins

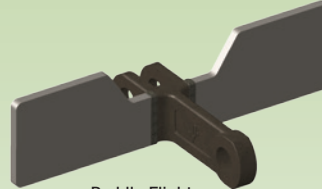
### Typical Welded Flight Attachments



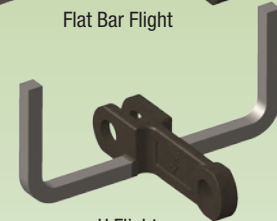
Square Bar Flight



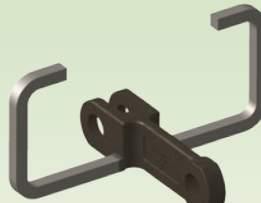
Flat Bar Flight



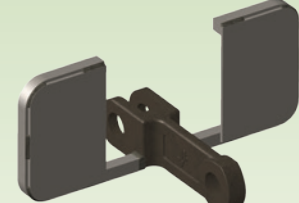
Paddle Flight



U Flight



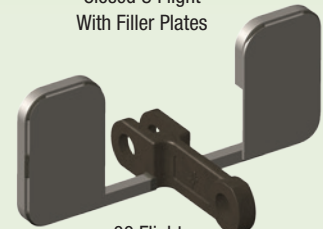
Closed U Flight



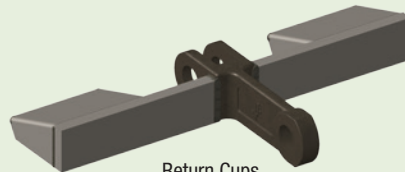
Closed U Flight With Filler Plates



OO Flight



OO Flight With Filler Plates



Return Cups

**Note:** Custom Flights Are Available, Based On Customer Specifications

### Standard Pin Options



Forged Head Pin, Collar And Roll Pin

Forged Head Pin And One Clamp

Plain Pin And Two Clamps

**Note:** Clamps, Roll Pins, Hex Bolts And Locknuts Must Not Be Re-used. Install One Time And Discard After Use

Bolt 'N' Go™ Hollow Pin, Bolt, Washers And Nut

With subsidiaries in North America, Europe, Asia, Africa and Australia along with a worldwide network of distributors, 4B can provide practical solutions for all your applications no matter the location.

[www.go4b.com](http://www.go4b.com)



[www.go4b.com/usa](http://www.go4b.com/usa)




 **4B BRAIME COMPONENTS LTD.**  
Hunslet Road  
Leeds LS10 1JZ  
UK  
Tel: +44 (0) 113 246 1800  
Fax: +44 (0) 113 243 5021

 **4B DEUTSCHLAND**  
9 Route de Corbie  
Lamotte Warfusee  
F-8080  
France  
Tel: +49 (0) 700 2242 4091  
Fax: +49 (0) 700 2242 3733

 **4B ASIA PACIFIC**  
Build No.899/1 Moo 20, Soi Chongsiri,  
Bangplee-Tam Ru Road, Tanbon  
Bangpleeyai, Amphur Bangplee,  
Samutprakarn 10540  
Thailand  
Tel: +66 (0) 2 173-4339  
Fax: +66 (0) 2 173-4338

 **4B COMPONENTS LTD.**  
625 Erie Ave.  
Morton, IL 61550  
USA  
Tel: 309-698-5611  
Fax: 309-698-5615

 **4B FRANCE**  
9 Route de Corbie  
80800 Lamotte Warfusee  
France  
Tel: +33 (0) 3 22 42 32 26  
Fax: +33 (0) 3 22 42 37 33

 **4B AFRICA**  
PO Box 1489  
Jukskei Park  
2153 Johannesburg  
South Africa  
Tel: +27 (0) 11 708 6114  
Fax: +27 (0) 11 708 1654

 **4B AUSTRALIA**  
Unit 1-18 Overlord Place  
Acacia Ridge  
Queensland 4110  
Australia  
Tel: +61 (0) 7 3711 2565  
Fax: +61 (0) 7 3711 2574

4B is proud to be a member of the following organizations:



4B participates in GEAPS programs, see us at the next GEAPS Exchange

