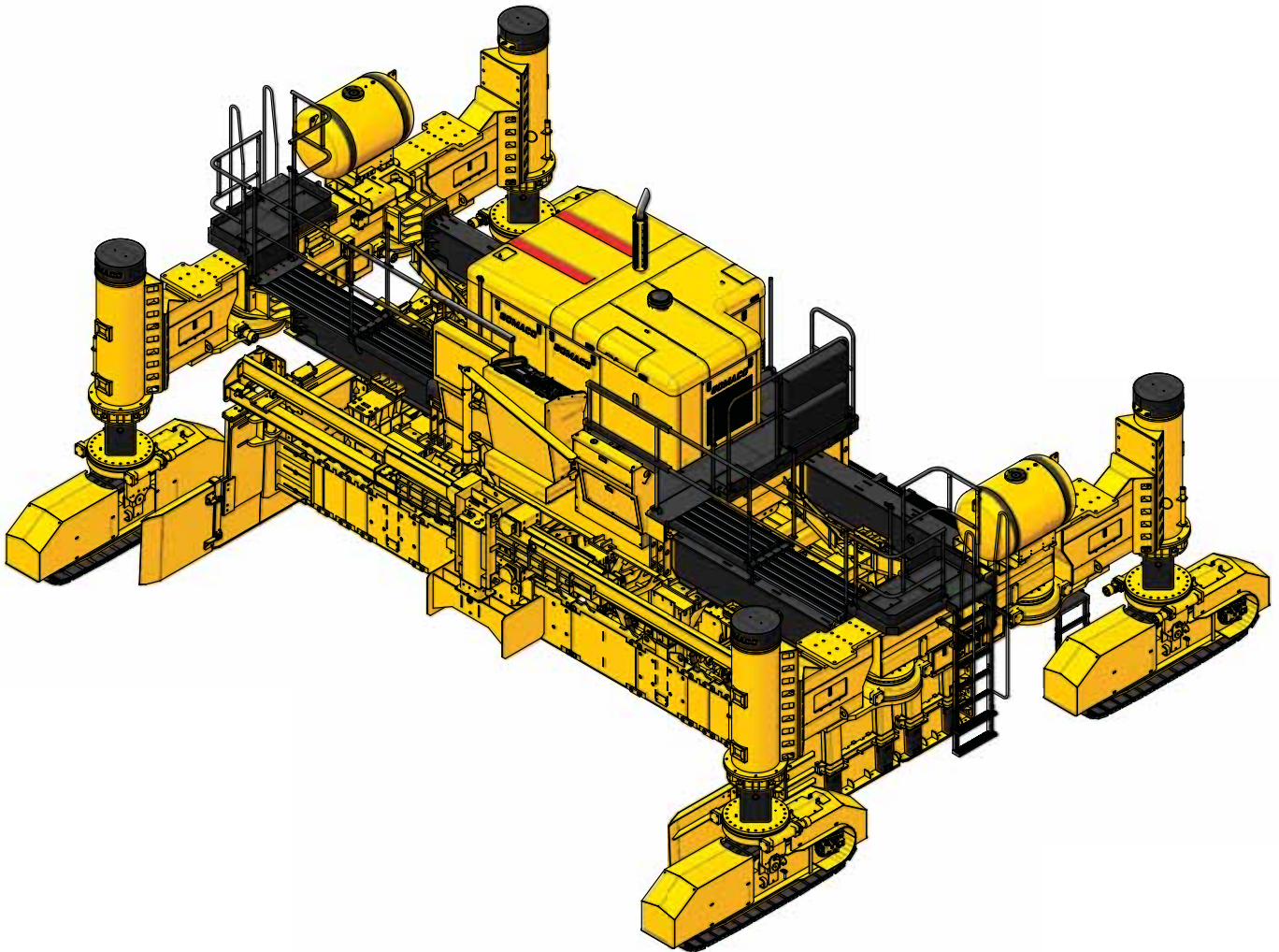


NEW GP4

Intelligent Slipform Paver

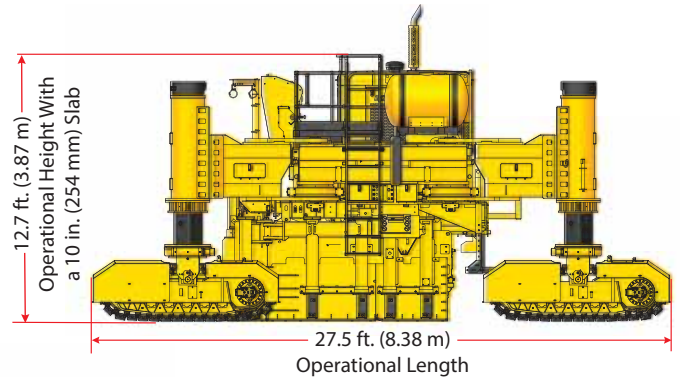


The Worldwide Leader in Concrete Paving Technology

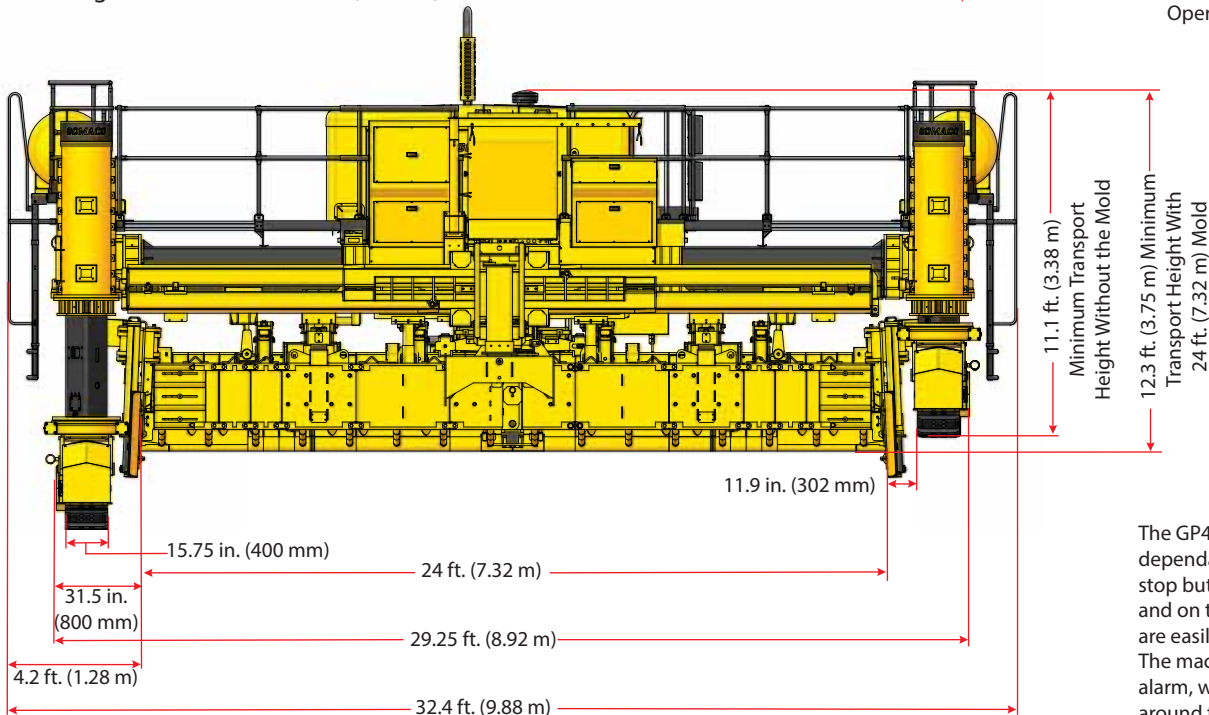
GP4 Slipform Paver

The new GOMACO GP4 is designed for paving up to 40 feet (12.19 m) wide and to accommodate multiple width changes.

- GOMACO roller frame and smart dual-telescoping capabilities.
- Smart Telescoping for accurate frame widening and automatic width reference for steering setup.
- Smart Pivot Arms for leg positioning with G+® controls and hydraulic rotational swing.
- Extreme Steering capabilities with hydraulic track rotation, GOMACO selective steer, and G+ controls.
- Load-sensed hydraulics for maximum performance and optimized for fuel efficiency.
- New hose and cable management features for hydraulic hose routing and frame cable organization.
- Retractable console to reduce shipping width.
- T-beam mounting rail incorporated into the telescoping frame.
- G+ quiet running technology.
- G+ Connect™ for smart accessories and all guidance systems.
- Isolated operator's platform for operator comfort.
- G+ managed fuel efficiency.
- Easy access to operator's platform from both sides and rear of the GP4.
- Tier 4 ready.



Drawing shown with a 24 foot (7.32 m) 5400 Series Mold

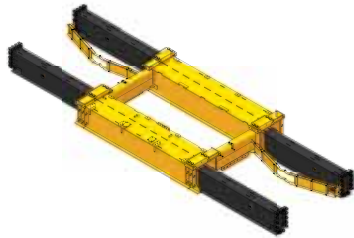
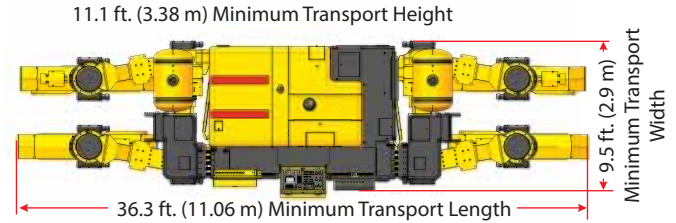


-- DESIGNED FOR SAFETY --

The GP4 is carefully designed to give years of dependable and safe service. The emergency stop buttons are on the operator's console and on the corners of the machine, which are easily accessible from the ground level. The machine is equipped with a backup alarm, which is designed to alert personnel around the machine when the tracks are set to operate in reverse. Other safety features include track guards, warning decals, operator horn, an operator's manual, and a safety manual. GOMACO machines are also designed to provide the operator with excellent visibility over the entire paving operation.

Transport Mode

The GP4 slipform paver is designed for easy transport. A retractable, sliding console reduces the shipping width of the machine. The paver can be switched to the transport mode by simply driving the legs around to the transport position. After the legs are in the transport position, G+ travel is switched to "Transport" for complete control. The operator can take this paver to the transport mode in minutes without assistance.



Smart Frame Widening

G+ knows the width of its dual-telescoping frame. Changing the width of the mainframe is accomplished with the Smart Cylinders and GOMACO roller frame. The GP4 can telescope up to seven feet (2.13 m) on each side of the frame for a total of 14 feet (4.27 m) of automatic frame widening.

The Smart Width provides easy, accurate width change setup and also a reference for G+ to control proper steering and track speeds while turning a radius at varying widths of the paver.

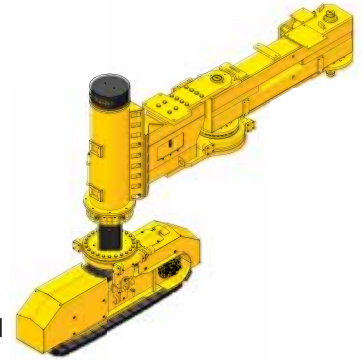
Smart Leg Positioning

Pivot arms for the paver legs feature rotary-sensored slew drives. These Smart Pivots provide the G+ controls with information on the angle of rotation, which coupled with the track rotation sensors, maintain the tracks in the straight-ahead line for steering.

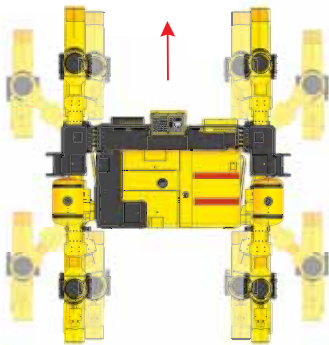
Smart Track Steering

Track steering and rotation is accomplished with rotary-sensored slew drives. This smart track rotation provides the G+ controls with exact track location and position. Extreme steering is now possible, with the tracks having the ability to steer farther than ever before.

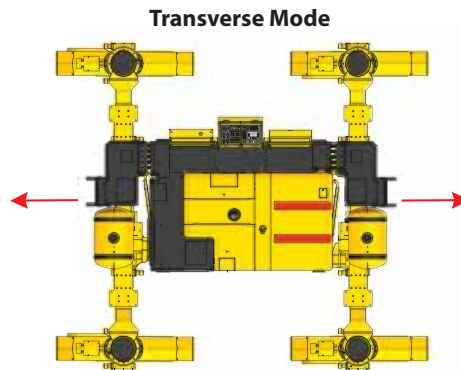
Smart leg pivoting and smart track rotation now lets the G+ system automatically control the direction and speed of each individual track as it travels through a radius.



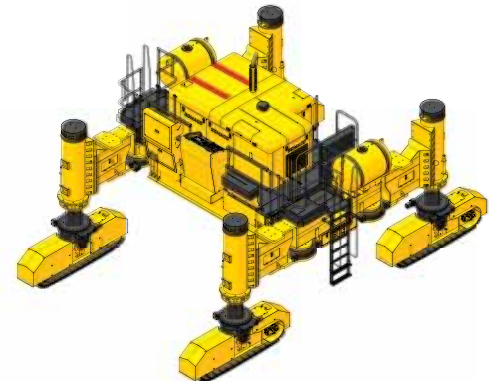
Sensored Leg Pivots and Track Rotation



Sensored steer feedback with sensed leg pivots provide continuous reference for the straight-ahead track positioning.



Full-steer tracks are turned perpendicular to the straight-ahead line. The G+ control system recognizes the track positioning and provides automatic steering control in the transverse mode.



The GP4 design utilizes rotary-sensored slew drives for radial swing on the pivot arms and also for the track rotation.

GP4 Introductory Specifications

ENGINE

Consult for options available.

SERVICE CAPACITIES

Fuel reservoir: 160 gal. (606 L).

Oil reservoir: 230 gal. (871 L).

AUTOMATED CONTROL SYSTEM

Type: Electronic-over-hydraulic.

Controls: GOMACO's exclusive G+® control system features self-diagnostics for grade and steering and smart steer controls for paving accuracy and ease in operation. It features multi-language, metric or imperial settings, and a 6.5 in. (165 mm) anti-glare display screen.

Control indicators: Color graphical performance indicators allow operator to monitor control signals for machine guidance on stringline or 3D.

TELESCOPING FRAME

Telescoping: 20 in. (508 mm) deep modular roller frame telescopes up to 7 ft. (2.13 m) on both sides for a total of 14 ft. (4.27 m) of telescoping capability.

Paving widths: 40 ft. (12.19 m) maximum paving with frame inserts.

WATER SYSTEM

High-pressure water system: Two 110 gal. (416.4 L) tanks. High-pressure with trigger gun control and adjustable pressure unloader for up to 2000 psi.

Option: Two 150 gal. (567.8 L) tanks with hoses, nozzles, and 14.5 cfm (.41 cmm) air compressor for pressurized spray system.

VIBRATORS

Type: Hydraulic motor-in-head powering an eccentric weight.

Quantity: 16 vibrators and 30 vibrator circuits are standard.

AUGER SYSTEM

Type: Two strike-off auger circuits and two grout box auger circuits.

TAMPER SYSTEM

Type: Electronic-over-hydraulic circuitry. Hydraulically-powered split vertical tamping system.

Tamper speed: Adjustable up to 120 strokes per minute.

SLIPFORM MOLD

One right-hand drive section, one left-hand drive section, and one center insert with power transition adjuster (PTA) section. Balance of inserts per customer specifications. Hydraulically pressure-compensated sideplates with variable depth adjustments.

International mold: One right-hand drive section, one left-hand drive section, and one power transition adjuster (PTA) section. Balance of metric inserts per customer specifications. Hydraulically pressure-compensated sideplates with variable depth adjustments.

FOUR-TRACK SYSTEM

Type: Four hydraulically powered, gear-driven crawler tracks.

Overall track length: Series 6 tracks 8.9 ft. (2.71 m) includes track fender.

Track pad width: 15.75 in. (400 mm).

Track speed: Variable up to 73.3 fpm (22.35 mpm).

Ground pressure: 21 psi based on 108,000 lb. (48,988 kg) machine with mold and weight evenly distributed.

Leg height adjustment: 36 in. (914 mm) hydraulic adjustment and manual adjustment up to 18 in. (457 mm) for a total height adjustment of 54 in. (1371 mm).

DIMENSIONS

Operational length: 27.5 ft. (8.38 m).

Operational width: 29.25 ft. (8.92 m) at a 24 ft. (7.32 m) paving width.

Operational height: 12.1 ft. (3.69 m).

Minimum transport length: 36.3 ft. (11.06 m).

Minimum transport width: 9.5 ft. (2.9 m).

Minimum transport height: 11.1 ft. (3.38 m).

WEIGHTS (approximate)

Transport weight: 88,000 lbs. (39,916 kg) without mold.

Operational weight: 108,000 lbs. (48,988 kg) with 24 ft. (7.32 m) 5000 series open-front mold.

Note: Transport and operational weights and dimensions are variable, depending on the number of machine options.

ATTACHMENTS/OPTIONS

5400 series mold.

VHS, vertical hinged sideplates.

Auto-Float® attachment.

Detachable telescoping auger/strike-off mold.

Computer-controlled power transition adjuster (PTA).

Ratchet-style edge slump.

Frame extensions.

GSI® (GOMACO Smoothness Indicator).

Sideplate extensions for bar insertion.

Manual bar inserter.

Air bar inserter.

Hydraulic bar inserter.

5400 series tie bar inserter.

Frame-mounted tie bar inserter.

Bolt-on keyway attachments.

Spreader plow.

GOMACO Remote Diagnostics (GRD).

On-board camera.

Other options are available to customize the machine to accommodate applications and customer needs.

Manufactured under one or more of the following U.S. or foreign patents: 5,924,817; 5,941,659; 6,099,204; 6,450,048; CA2,211,331; 7,044,680; 7,284,472; 7,517,171; 7,845,878; 7,850,395; CA2,864,902; CA2,591,177; 8,855,967; 8,682,622; 9,051,696; 9,180,909; 9,200,414; 9,404,228; 9,428,869; 9,458,581; 9,464,716; 9,541,195; and patents pending.

GOMACO, Auto-Float, GOMACO Smoothness Indicator (GSI), and G+ are registered trademarks of GOMACO Corporation.

GOMACO Corporation reserves the right to make improvements in design, material, and/or changes in specifications at any time without notice and without incurring any obligation related to such changes. Performance data is based on averages and may vary from machine to machine.

Printed in U.S.A. © 2017 (1 GOMACO Corp.)

Worldwide Headquarters

GOMACO Corporation
PO Box 151
Ida Grove, IA USA 51445
Ph: 1-712-364-3347
www.gomaco.com
E-mail: info@gomaco.com

European Headquarters

GOMACO International Ltd.
Units 14 & 15
Avenue One, Station Lane
Witney, Oxon, OX28 4XZ, United Kingdom
Ph: 44-1993-705100
E-mail: pavinguk@gomaco.com



The Worldwide Leader in Concrete Paving Technology



GOMACO Corporation's Quality Management System Is
ISO 9001 Certified By The American Systems Registrar.

Quality Policy: We Shall Meet Or
Exceed Our Customers' Expectations.

