

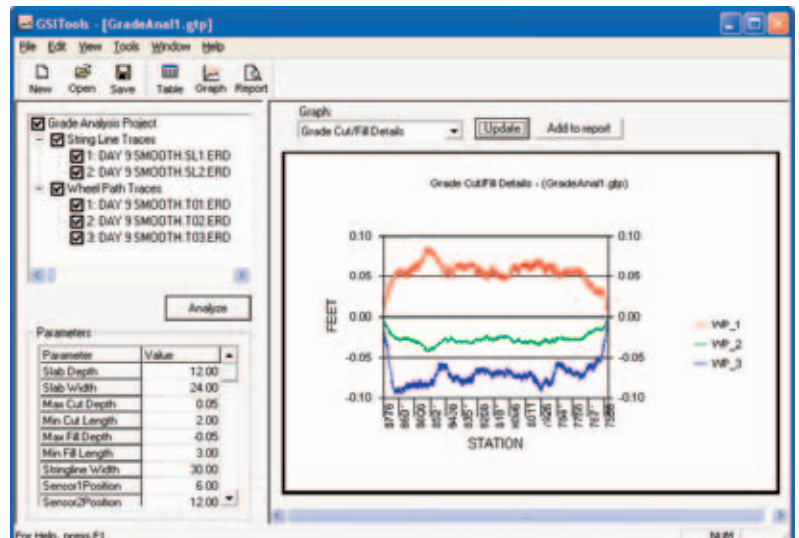
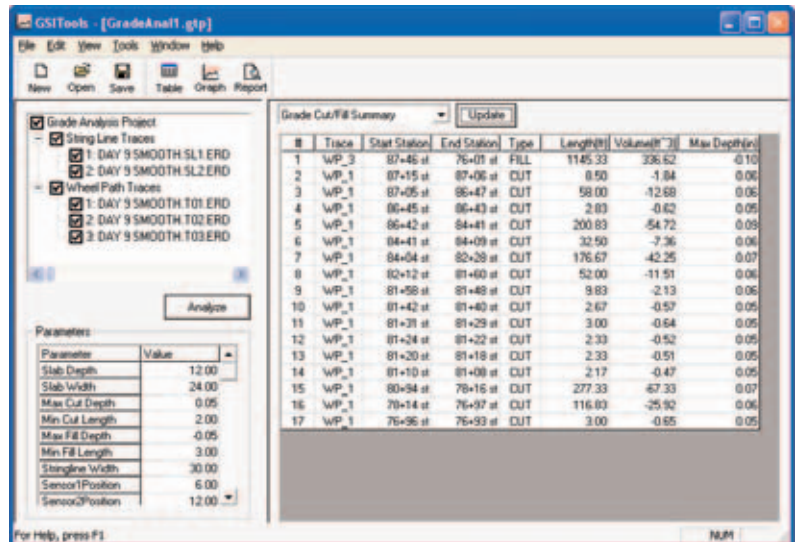
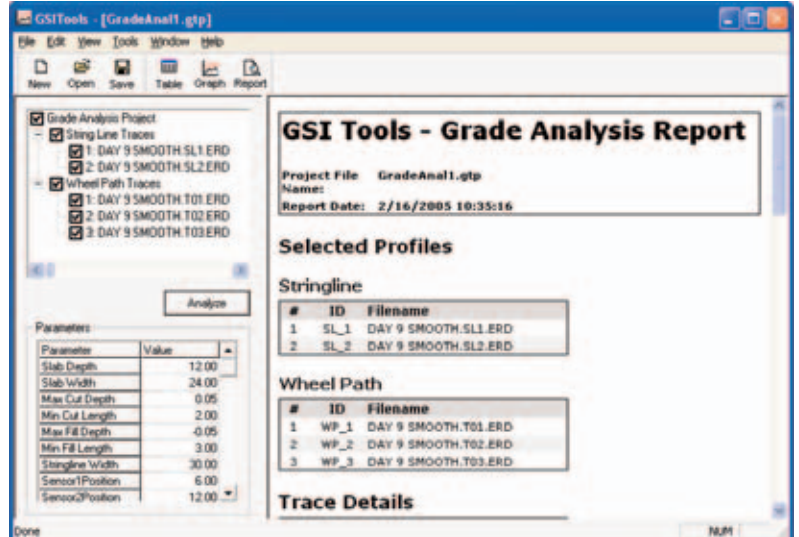
THE PROFIT ON YOUR PROJECT THESE DAYS IS DEPENDENT ON ... HOW MUCH YOU SAVE!



The GSITools™ software application performs post processing of exported GSI® trace data and provides a Grade Analysis Tool, which can build a profile of the grade and estimate the concrete yield of the project. The software also provides a cut-and-fill report for final grade preparation.

The following is an overview of the Grade Analysis Tool features:

- Grade Analysis Report
 - Selected profiles
 - Trace details
 - Slab volume
 - Project parameters
 - Grade cut/fill summary
 - User selected graphs
- Project Trace Selection
 - Add/delete reference (stringline or stringless) traces
 - Add/delete wheel path traces
- Project Parameters
 - Slab definition
 - Grade cut/fill parameters
 - Sensor positions
 - Grade offsets
- Table View
 - Elevation data
 - True profile data
 - Grade cut/fill details
 - Grade cut/fill summary
- Graph View
 - Elevation
 - True profile
 - Grade cut/fill details



GSI Tools - Grade Analysis Report

Project File Name: GradeAna1.gtp
Report Date: 2/16/2005 10:55:12

Selected Profiles

Stringline

#	ID	Filename
1	SL_1	DAY 9 SMOOTH.SL1.ERD
2	SL_2	DAY 9 SMOOTH.SL2.ERD

Wheel Path

#	ID	Filename
1	WP_1	DAY 9 SMOOTH.T01.ERD
2	WP_2	DAY 9 SMOOTH.T02.ERD
3	WP_3	DAY 9 SMOOTH.T03.ERD

Trace Details

Data Points	Length	Start Station	End Station
7286	1214.33 ft	87+75 st	75+61 st

Slab Volume

Name	Value
Slab Volume (1214.33 ft x 24.00 ft x 1.00 ft)	29144.00 ft ³
Volume Deviation	210.55 ft ³
Total Volume (Slab Volume + Deviation)	29354.55 ft ³

Project Parameters

Name	Value	Units
Slab Depth	12.00	IN
Slab Width	24.00	FT
Cut Max	0.05	IN
Fill Max	-0.05	IN
Stringline Width	30.00	FT
Sensor 1 Position	6.00	FT
Sensor 2 Position	12.00	FT
Sensor 3 Position	18.00	FT
Sensor 4 Position	24.00	FT
Sensor 5 Position	30.00	FT
Sensor 6 Position	36.00	FT
Sensor 7 Position	40.00	FT
Sensor 8 Position	46.00	FT
Sensor 1 Offset	0.00	IN
Sensor 2 Offset	0.00	IN
Sensor 3 Offset	0.00	IN
Sensor 4 Offset	0.00	IN
Sensor 5 Offset	0.00	IN
Sensor 6 Offset	0.00	IN
Sensor 7 Offset	0.00	IN
Sensor 8 Offset	0.00	IN
Sensor 1 End Offset	0.00	IN
Sensor 2 End Offset	0.00	IN
Sensor 3 End Offset	0.00	IN
Sensor 4 End Offset	0.00	IN
Sensor 5 End Offset	0.00	IN
Sensor 6 End Offset	0.00	IN
Sensor 7 End Offset	0.00	IN
Sensor 8 End Offset	0.00	IN

Grade Cut/Fill Summary

#	Start Station	End station	Type	Length(ft)	Volume(ft ³)	Max Depth(in)	Trace
1	87+46 st	76+01 st	FILL	1145.33	336.62	-0.10	WP_3
2	87+15 st	87+06 st	CUT	8.50	-1.84	0.06	WP_1
3	87+05 st	86+47 st	CUT	58.00	-12.68	0.06	WP_1
4	86+45 st	86+43 st	CUT	2.83	-0.62	0.05	WP_1
5	86+42 st	84+41 st	CUT	200.83	-54.72	0.09	WP_1
6	84+41 st	84+09 st	CUT	32.50	-7.36	0.06	WP_1
7	84+04 st	82+28 st	CUT	176.67	-42.25	0.07	WP_1
8	82+12 st	81+60 st	CUT	52.00	-11.51	0.06	WP_1
9	81+58 st	81+48 st	CUT	9.83	-2.13	0.06	WP_1
10	81+42 st	81+40 st	CUT	2.67	-0.57	0.05	WP_1
11	81+31 st	81+29 st	CUT	3.00	-0.64	0.05	WP_1
12	81+24 st	81+22 st	CUT	2.33	-0.52	0.05	WP_1
13	81+20 st	81+18 st	CUT	2.33	-0.51	0.05	WP_1
14	81+10 st	81+08 st	CUT	2.17	-0.47	0.05	WP_1
15	80+94 st	78+16 st	CUT	277.33	-67.33	0.07	WP_1
16	78+14 st	76+97 st	CUT	116.83	-25.92	0.06	WP_1
17	76+96 st	76+93 st	CUT	3.00	-0.65	0.05	WP_1



The Worldwide Leader in Concrete Paving Technology

119 East Highway 175, PO Box 151

Ida Grove, IA USA 51445

Ph: 712-364-3347 Fax: 712.364.3986

E-mail: info@gomaco.com

Visit our web site at www.gomaco.com

Printed in U.S.A. © 2006 (2-GC) GOMACO Corporation
Order #GSI® GRADE ANALYSIS TOOL