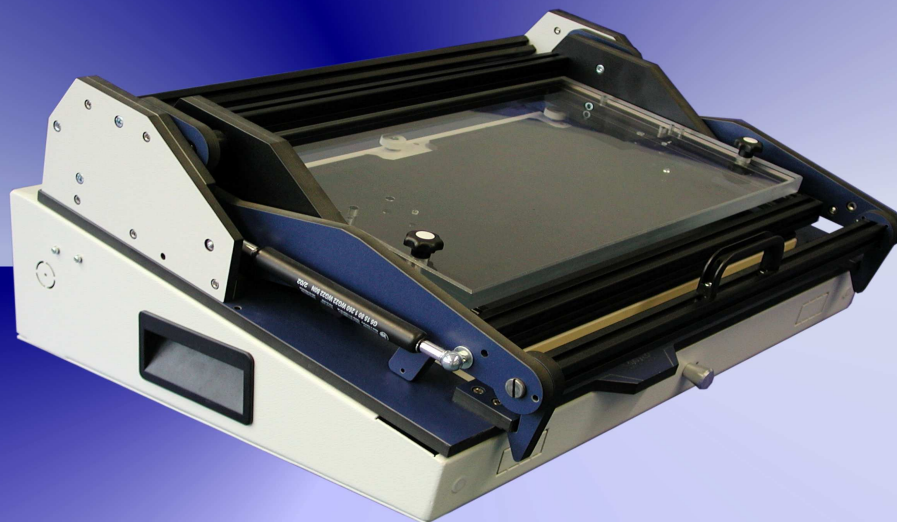


## Changeable Units

## Mechanical Fixture

### WA-M-15xx



### Technical description

- parallel mechanical pressure unit
- lower-cost because of the changeable unit
- individual upgrading through the unit assembly system
- interface with contacts or probe-interface
- fixture is suitable for about 300N (200 probes with 1,5N spring force)
- customer specified interface
- case can be opened during the debugging
- changeable plates / raise of case are not included in the fixture; order separately
- various accessoires

Fixture:	Outside dimensions:	Working area:	Probe plate:	Moving plate:	Holddown plate:	Holddown element:
WA-M-1500	530x450x240mm	350x230mm	WA-KTP-400	WA-PAP-400	WA-AP-400	WA-AE-400
WA-M-1500-I	530x450x240mm	330x180mm	WA-KTP-400-I	WA-PAP-400-I	WA-AP-400	WA-AE-400
WA-M-1501	280x450x240mm	205x110mm	WA-KTP-140	WA-PAP-140	WA-AP-140	WA-AE-140
WA-M-1501-I	280x450x240mm	180x110mm	WA-KTP-140-I	WA-PAP-140-I	WA-AP-140	WA-AE-140
WA-M-1501-I-T	560x450x240mm	2x 180x110mm	2x WA-KTP-140-I	2x WA-PAP-140-I	2x WA-AP-140	2x WA-AE-140
WA-M-1501-T	560x450x240mm	2x 205x110mm	2x WA-KTP-140	2x WA-PAP-140	2x WA-AP-140	2x WA-AE-140
WA-M-1510	740x510x250mm	520x295mm	WA-KTP-410	WA-PAP-410	WA-AP-410	WA-AE-410
WA-M-1510-I	740x510x250mm	520x250mm	WA-KTP-410-I	WA-PAP-410-I	WA-AP-410	WA-AE-410
WA-M-1511-I-T	740x510x250mm	2x 260x160mm	2x WA-KTP-210-I	2x WA-PAP-210-I	2x WA-AP-210	2x WA-AE-210
WA-M-1511-T	740x510x250mm	2x 295x180mm	2x WA-KTP-210	2x WA-PAP-210	2x WA-AP-210	2x WA-AE-210

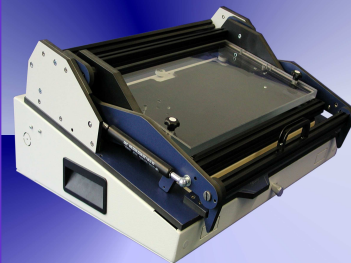
## Changeable Units

## Mechanical Fixture

### Fixture with parallel closing pressure unit

incl. 192pole internal interface  
max. working area: 350x230 mm

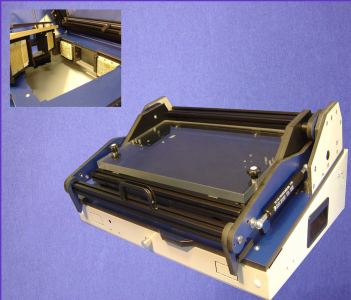
Order number: **WA-M-1500**



### Fixture with parallel closing pressure unit for FKS-IF

incl. mounting support for internal interface with max. 1020Pins  
max. working area: 330x180mm

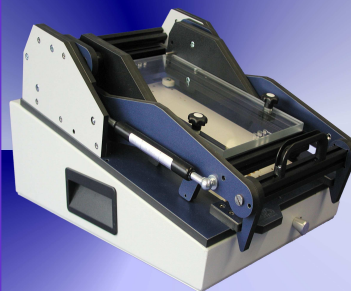
Order number: **WA-M-1500-I**



### Fixture with parallel closing pressure unit

incl. 96 pole internal interface  
max. working area: 205x110 mm

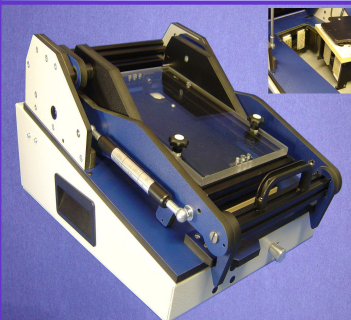
Order number: **WA-M-1501**



### Fixture with parallel closing pressure unit for FKS-IF

incl. mounting support for internal interface with max. 510Pins  
max. working area: 180x110 mm

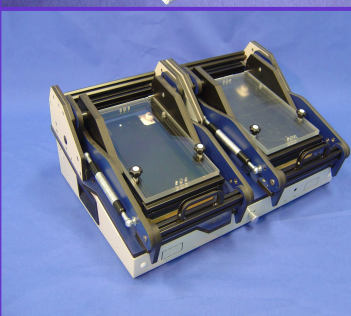
Order number: **WA-M-1501-I**



### Mechanical Tandem Fixture for FKS-IF

with two separate parallel mechanical pressure units WA-M-1501  
max. working area: 2x 180x110mm;  
incl. mounting supports for int. Interface with max. 510Pins

Order number: **WA-M-1501-I-T**



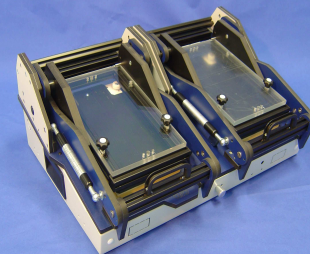
## Changeable Units

## Mechanical Fixture

### Mechanical Tandem Fixture

with two separate parallel mechanical pressure units WA-M-1501  
 max. working area: 2x 205x110mm;  
 incl. 96 pole internal interface

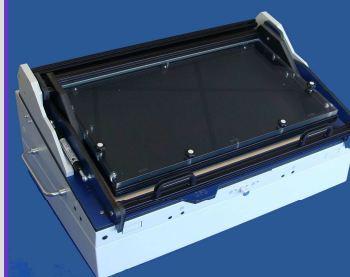
Order number: **WA-M-1501-T**



### Fixture with parallel closing pressure unit

incl. 4x96pole internal interface  
 max. working area: 520x295 mm  
 outside dimensions: 740x510x250mm

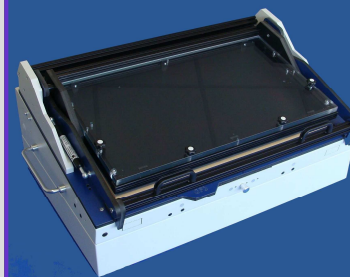
Order number: **WA-M-1510**



### Fixture with parallel closing pressure unit for FKS-IF

incl. mounting support for internal interface with 1020Pins,  
 expandable to max. 2040Pins  
 max. working area: 520x250mm;  
 outside dimensions: 740x510x250mm

Order number: **WA-M-1510-I**



### Mechanical Tandem Fixture for FKS-IF

with two separate parallel mechanical pressure units WA-M-1511,  
 outside dimensions: 740x510x250mm  
 max. working area: 2x 260x160mm;  
 incl. mounting supports for int. Interface with max. 512Pins

Order number: **WA-M-1511-I-T**



### Mechanical Tandem Fixture

with two separate parallel mechanical pressure units WA-M-1511  
 outside dimensions: 740x510x250mm;  
 max. working area: 2x 295x180mm;  
 incl. 96 pole internal interface

Order number: **WA-M-1511-T**





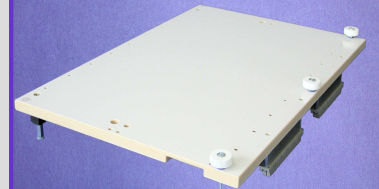
## Changeable Units

## Mechanical Fixture

### Probe plate

CEM1; incl. 192pole internal interface  
 max. working area: 350x230mm,  
 outside dimensions: 400x270mm, approx. 10mm thick

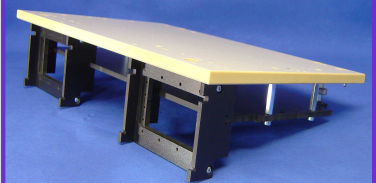
Order number: **WA-KTP-400**



### Probe plate for FKS-IF

incl. mounting support for internal interface with max. 1020Pins  
 max. working area: 330x180mm

Order number: **WA-KTP-400-I**



### Probe plate

incl. 96pole internal interface  
 max. working area: 205x110mm

Order number: **WA-KTP-140**



### Probe plate for FKS-IF

incl. mounting support for internal interface with max. 510Pins  
 max. working area: 180x110 mm

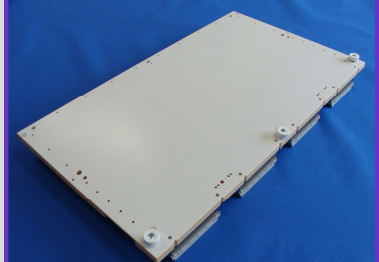
Order number: **WA-KTP-140-I**



### Probe plate

CEM1; incl. 4x96pole internal interface  
 max. working area. 520x295mm  
 outside dimensions: 570x335mm, approx. 10mm thick

Order number: **WA-KTP-410**





## Changeable Units

## Mechanical Fixture

### Probe plate for FKS-IF

for WA-M-1510-I / WA-P-3010-I; incl. mounting support  
for internal interface with 1020Pins, expandable to 2040Pins  
max. working area: 520x250mm;  
outside dimensions: 570x335mm

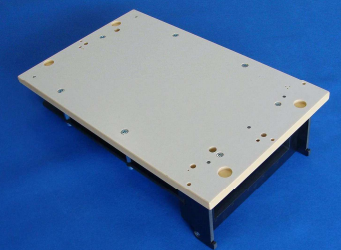
Order number: **WA-KTP-410-I**



### Probe plate for FKS-IF

incl. mounting support for internal interface with 510Pins  
max. working area: 260x160 mm

Order number: **WA-KTP-210-I**



### Probe plate

incl. 96pole internal interface  
max. working area: 295x180mm;  
outside dimensions: 336x209mm

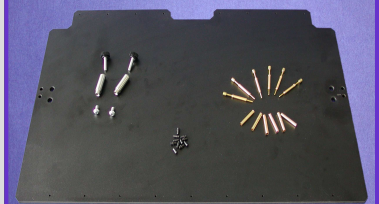
Order number: **WA-KTP-210**



### Moving plate

spring-mounted, springs for UUT incl.,  
with distance stoppers (3mm)  
max. working area: 350x230mm,  
outside dimensions: 400x254mm, approx. 5mm thick

Order number: **WA-PAP-400**



### Moving plate

made of EGS-AS; incl. 10 distance stoppers (3mm)  
max. working area: 330x180mm,  
outside dimensions: 400x270mm, approx. 5mm thick

Order number: **WA-PAP-400-I**



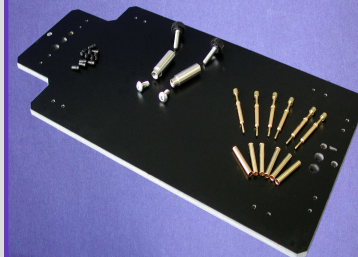
## Changeable Units

## Mechanical Fixture

### Moving plate

made of EGS-AS; springs for UUT incl.,  
with distance stoppers (3mm)  
max. working area: 205x110 mm;  
outside dimensions: 270x140mm, approx. 5mm thick

Order number: **WA-PAP-140**



### Moving plate

made of EGS-AS; incl. 10 distance stoppers (3mm)  
max. working area: 180x110mm,  
outside dimensions: 270x140mm, approx. 5mm thick

Order number: **WA-PAP-140-I**



### Moving plate

approx. 5mm thick, springs for UUT incl.  
and 15 distance stoppers 02 (3mm), made of EGS-619-AS-COMP Var. 2,  
max. product area: 520x295mm,  
outside dimensions: 570x331mm

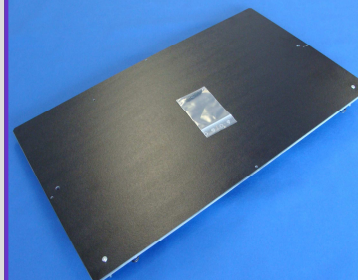
Order number: **WA-PAP-410**



### Moving plate

for WA-M-1510-I / WA-P-3010-I; made of EGS-AS  
incl. 10 distance stoppers (3mm)  
max. working area: 520x250 mm;  
outside dimensions : 570x335mm; approx. 5mm thick

Order number: **WA-PAP-410-I**



### Moving plate

made of EGS-AS; incl. 10 distance stoppers (3mm)  
and springs for UUT  
max. working area: 260x160 mm;  
outside dimensions: 336x209mm, approx. 5mm thick

Order number: **WA-PAP-210-I**



## Changeable Units

## Mechanical Fixture

### Moving plate

made of EGS-AS; springs for UUT incl. and 10 distance stoppers (3mm)  
max. working area: 295x180mm;  
outside dimensions: 332x209mm, approx. 5mm thick

Order number: **WA-PAP-210**



### Holddown plate

made of ESD acrylic plastic, approx. 15mm thick,  
outside dimensions : 407x240mm  
max. working area: 350x230mm; incl. 6pcs pushdown fingers M3x30 PA

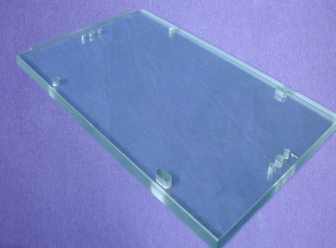
Order number: **WA-AP-400**



### Holddown plate

made of ESD acrylic plastic, approx. 10mm thick,  
max. working area: 205x110mm;  
outside dimensions: 260x158mm

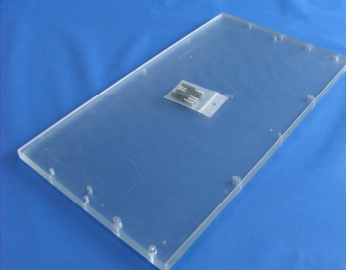
Order number: **WA-AP-140**



### Holddown plate

made of ESD acrylic plastic, approx. 15mm thick,  
max. working area: 520x295mm;  
outside dimensions : 576x330,5mm

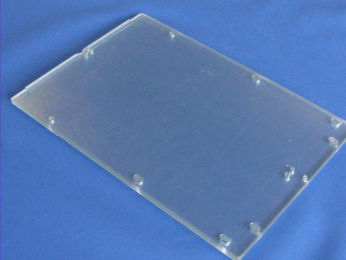
Order number: **WA-AP-410**



### Holddown plate

made of ESD-PVC, approx. 10mm thick  
max. working area: 295x180mm;  
outside dimensions: 335x227 mm

Order number: **WA-AP-210**





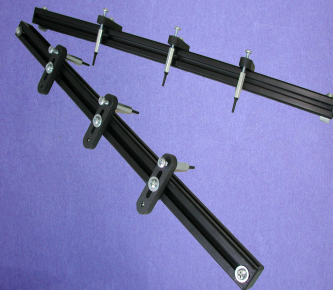
## Changeable Units

## Mechanical Fixture

### Holddown element

crosshead with 3 heigh-adjustable pushdown fingers,  
mounting material incl.; length: 408mm

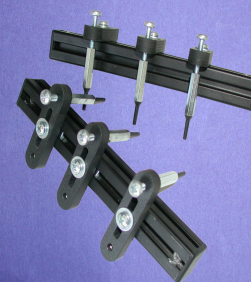
Order number: **WA-AE-400**



### Holddown element

crosshead with 3 heigh-adjustable pushdown fingers,  
mounting material incl.

Order number: **WA-AE-140**



### Holddown element

crosshead with 5 heigh-adjustable pushdown fingers,  
mounting material incl.; length 578mm

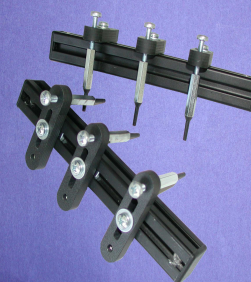
Order number: **WA-AE-410**



### Holddown element

crosshead with 3 heigh-adjustable pushdown fingers,  
mounting material incl.

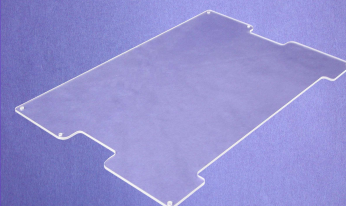
Order number: **WA-AE-210**



### Protecting plate

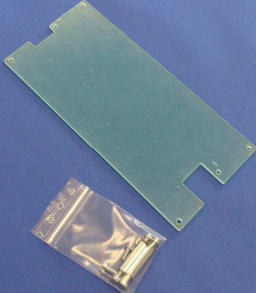
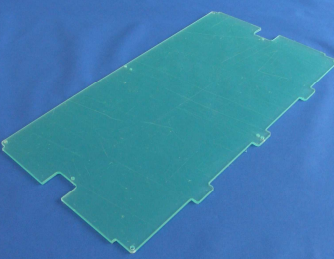

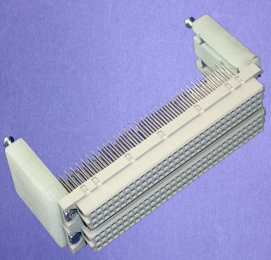
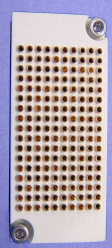
for WA-KTP-400  
approx. 3mm thick, incl. fixing material  
outside dimensions: 370x250mm

Order number: **WA-HSP-400**



## Changeable Units

## Mechanical Fixture

<p><b>Protecting plate</b></p> <p>for WA-KTP-140 acrylic plastic, approx. 3mm thick; incl. fixing material outside dimensions: 239x112mm</p> <p>Order number: <b>WA-HSP-140</b></p>	
<p><b>Protecting plate</b></p> <p>for WA-KTP-410 approx. 3mm thick, incl. fixing material outside dimensions: 543x316mm</p> <p>Order number: <b>WA-HSP-410</b></p>	
<p><b>Protecting plate</b></p> <p>for WA-KTP-210 acrylic plastic, approx. 3mm thick; incl. fixing material outside dimensions: 321x182mm</p> <p>Order number: <b>WA-HSP-210</b></p>	
<p><b>Interface expansion 4x96pole Wire-Wrap</b></p> <p>for WA-KTP-400 upgradeable, incl. fixing material</p> <p>Order number: <b>WA-KTP-IF384</b></p>	
<p><b>Interface-block 170pole</b></p> <p>with interface pins incl. screws</p> <p>Order number: <b>TSI-50-101</b></p>	

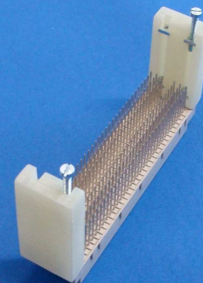
## Changeable Units

## Mechanical Fixture

### Interface expansion 2x96pol. Wire-Wrap

for WA-KTP-140  
upgradeable, incl. fixing material

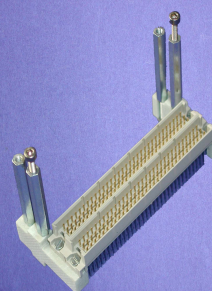
Order number: **WA-KTP-IF192**



### Interface expansion 4x96pole Wire-Wrap

for WA-M-1400/WA-M-1500/WA-P-3000  
upgradeable, incl. fixing material

Order number: **WA-M-IF384**



### Interface-block 170pole for receiver

installed:  
socket: 100-SDG160W, probe: 100-PLG1603L

Order number: **TSI-50-201**



### Interface expansion 2x96pol. Wire-Wrap

for WA-M-1401/WA-M-1501  
upgradeable, incl. fixing material

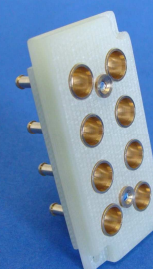
Order number: **WA-M-IF192**



### Pneumatic-interface-block 8pole

for internal interface (fixture)

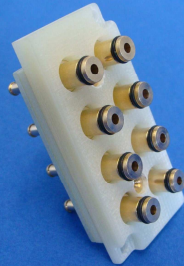
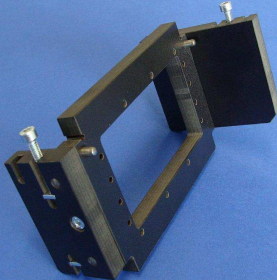
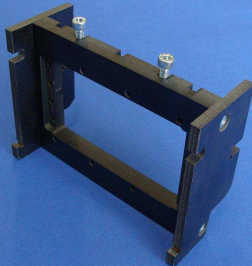
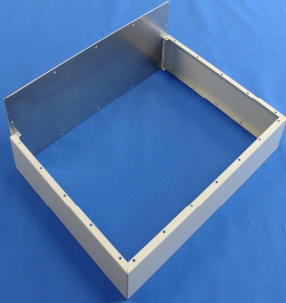

Order number: **TSI-50-PBB**





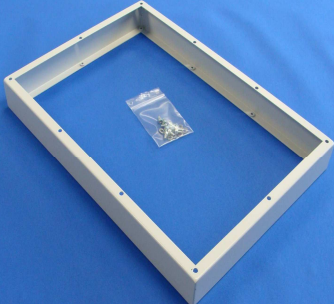
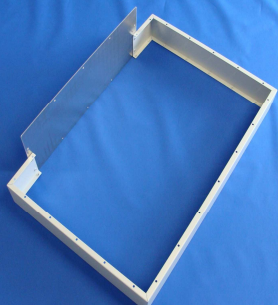



## Changeable Units

## Mechanical Fixture

<p><b>Pneumatic-interface-block 8pole</b></p> <p>for internal interface (receiver)</p> <p>Order number: <b>TSI-50-PSB</b></p>	
<p><b>Interface expansion for WA-M-1510-I</b></p> <p>for upgrading; mounting below the base plate, for max. 3 blocks (not included); mountable on two mounting positions</p> <p>Order number: <b>WA-M-1510-I-203_1</b></p>	
<p><b>Interfac expansion for WA-KTP-140/400/410-I</b></p> <p>for upgrading mounting below the probe plate, for max. 3 blocks (not included); mountable on two mounting positions</p> <p>Order number: <b>WA-KTP-XX0-I-004</b></p>	
<p><b>Raise of case 90mm V2.0</b></p> <p>for case MFG-530-Pult-Gehäuse-V1.0; aluminium, heigh: 90mm</p> <p>Order number: <b>MFG-530-GEHÄUSEERHÖHUNG-90</b></p>	
<p><b>Raise of case 250mm</b></p> <p>for case MFG-530-Pult-Gehäuse-V1.0 heigh: 250mm</p> <p>Order number: <b>MFG-530-GEHÄUSEERHÖHUNG-250</b></p>	

## Changeable Units

## Mechanical Fixture

<p><b>Raise of case 45mm</b></p> <p>for case MFG-280-PULT-GEHÄUSE-V1.0 (for WA-M-1401/1501; PA3001)</p> <p>Order number: <b>MFG-280-GEHÄUSEERHÖHUNG</b></p>	
<p><b>Raise of case 90mm V1.0</b></p> <p>for case MFG-700-Pult-V1.0; aluminium RAL7035</p> <p>Order number: <b>MFG-700-GEHÄUSEERHÖHUNG-90</b></p>	
<p><b>Start button, magnetic</b></p> <p>for WA-M-15xx deskform with parallel holddown mechanic-system</p> <p>Order number: <b>WA-M-1500-MS</b></p>	
<p><b>Spring probes for UUT 3N</b></p> <p>sockets incl., spring force 3N; extended height: 13,3mm point style: 4mm</p> <p>Order number: <b>WA-GPA-13-3N</b></p>	
<p><b>Spring probes for UUT 6N</b></p> <p>sockets incl., spring force 6N; extended height 13,3mm point style: 4mm</p> <p>Order number: <b>WA-GPA-13-6N</b></p>	

## Changeable Units

## Mechanical Fixture

### Spring probes for UUT 3N

sockets incl., spring force 3N; extended height 13,3mm  
point style: 3mm (plastic)

Order number: **WA-GPA-13-3N-K**



### Spring probes for UUT 6N

sockets incl., spring force 6N; extended height 13,3mm  
point style: 3mm (plastic)

Order number: **WA-GPA-13-6N-K**

