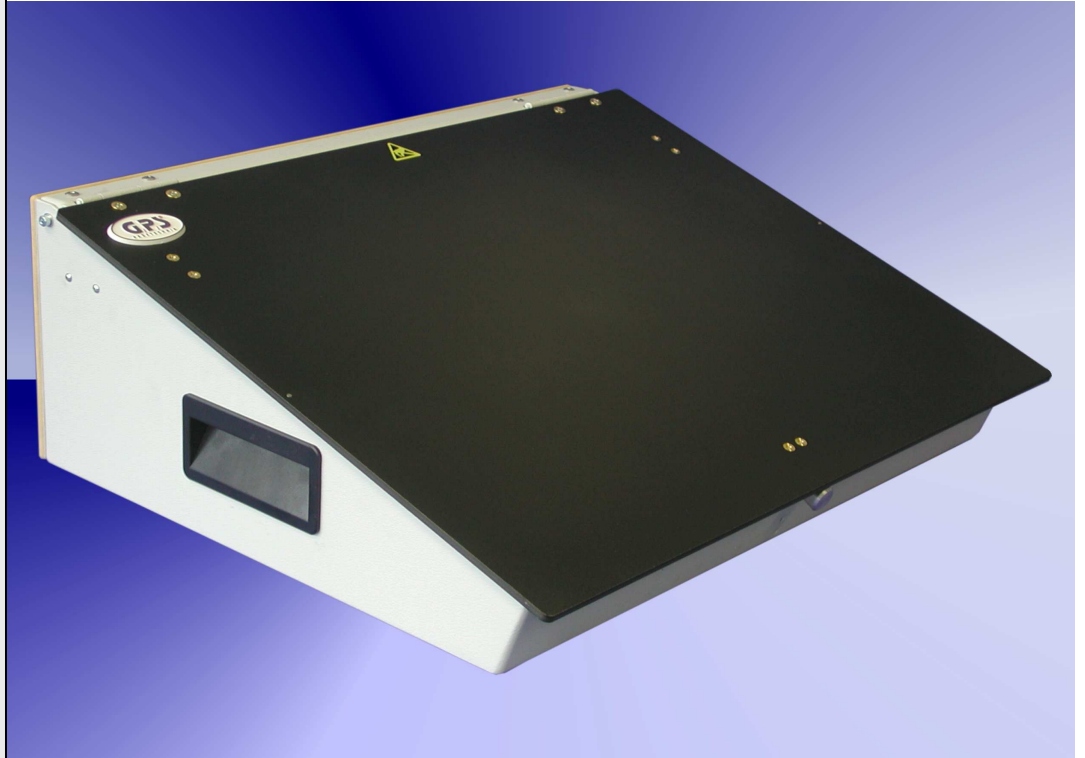


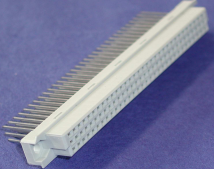
TSU-50-500



Fixture specification

- Outside dimensions : 510 x 430 x 190 mm
- Max. working area : 430 x 330 mm
- Cant for easy handling
- Stable quality through the case and the aluminium frame
- Moving plate made of ESD plate material for a self made completion
- Protecting errector standard
- Case can be opened during the debugging
- Interface without insertion
- Short delivery time

Accessories for TSU-50-500

<p>Specification: Interface connector, 64 pole</p>		<p>Specification: Interface connector, 96 pole</p>	
<p>Order number:</p>	<p>FL-C-64-WW-17-Gerade</p>	<p>Order number:</p>	<p>FL-C-96-WW-13-Gerade</p>