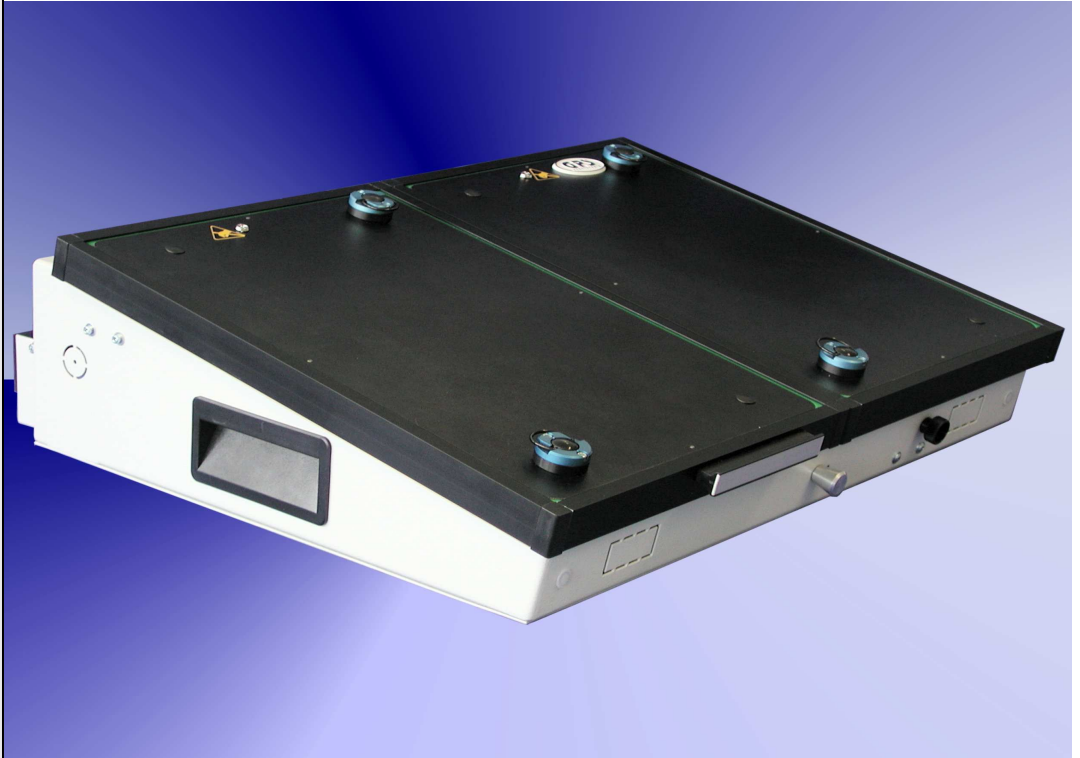


TSI-50-4100



Fixture specification

- Outside dimensions : 550 x 500 x 160 mm
- Max. working area : 2 x (320 x 195) mm
- Cant for easy handling
- Stable quality through the case and the aluminium frame
- PAG - plug and guide system
- Moving plate made of ESD plate material
- Probe plate made of G10 (CP quality) 10 mm
- GPS ESD sealing of vacuum chamber
- Rounded edges (for a better intake)
- Protecting errector standard
- Case can be opened during the debugging
- Outpourings intended for the use of a counter
- ESD leakage probes standard
- Moving plate 8 mm (optional)
- Interface without insertion
- Short delivery time

Accessories for TSI-50-4100

<p>Specification: Interface block, 170 pole, interface pin flat</p> <p>Order number:</p>	 <p>TSI-50-100</p>	<p>Specification: Interface block, 170 pole, interface pin cup</p> <p>Order number:</p>	 <p>TSI-50-102</p>